

Unlike most other field blankets, their Evergreen blanket is made of a permeable material. It is a uniquely woven, translucent polyethylene with a patented lace coating. It is UV treated, rot and mildew resistant, and does not show significant wear or degradation by sunlight even after years of regular use, he adds. Blankets, in general, reduce the risk of winterkill, minimize loss of chemicals due to evaporation, and delay dormancy of grass in the fall.

"It's especially effective on golf courses to prevent wind-caused desiccation in the winter," Curry says. At the Buffalo Bison's Dunn Tire stadium, they found that the retained heat encouraged good root development in the early spring when a late fall planting would normally not get off to such a quick start.

A blanket would be great at BYU-Idaho, but budgets interfere. A big challenge at BYU-Idaho is the wind and relatively open, but

included with each cover. On baseball fields, sizes range from infield covers to full-field. Similarly, soccer, football and other field sizes can be accommodated.

At RFK Stadium in Washington, DC, when the Redskins played there, they put a blanket on the field every night in the fall and removed it the next day. That tricked the bermudagrass into not going dormant and saved them from having to paint the field. However, as a general rule, a good time to apply a winter turf blanket is about the time bermuda would start to go dormant.

"If you've overseeded or sodded, come spring be careful not to get the cover off too early," Curry says. That can result in cold shock on the new grass.

Many turf managers worry about the growth they see popping through the cover early in the spring. "A good idea is to remove

Minner recommends against using non-selective soil sterilant herbicides on skin areas to prevent weed growth. "It is likely that these materials will find their way into the surrounding turf areas and cause injury," he notes.

#### Other tips

Traffic control is a key factor in successfully managing any field. "Managing a football field requires coordination among the administrator, coach, band director, and grounds manager," Minner notes.

"Administrators should keep in mind that proper traffic control costs nothing in terms of dollars and at the same time offers the most effective means of reducing dangerously worn areas on game and practice fields," he continues.

This is one job where communications

## "THE BIGGEST THING TO DO FOR WINTER IS TO MAKE SURE YOU HAVE AN ADEQUATE NUTRIENT RESERVE DOWN FOR THE FIELD." - WARNICK

very cold, winter. That makes overseeding in the fall impractical. "I've overseeded at other places. But our winter and spring are so harsh that we don't overseed here. We're better served by doing it in the spring after the ground starts to thaw," Warnick says.

"I'd like to use a blanket," Warnick says, "but we can't afford it here. I would like to have one at the soccer goal mouths and for other early-spring sports, like the baseball infields and along the foul area near the dugouts."

Around soccer goal mouths and similar high-use areas, a blanket will give an overseeding a couple of days head start on recovery.

In the spring, there is payback, too, as it takes less time to prepare fields for play. There are always those spots where the turf is simply worn down more than others are. Turf under a blanket comes back better, allowing quick repair on those heavy wear areas.

Handling is easy, Curry says. Simply lay the blanket down and anchor it with the pegs

the cover, mow, and then replace it, until temperatures warm up," Curry says.

#### Baseball fields

Many small colleges start baseball and softball practice as early as mid-February. Minner notes that the practices that work on football and soccer fields are generally applicable to baseball fields.

But some areas, like skin areas, are special cases and often are neglected. "Skin areas are often left to fend for themselves during the winter," he says. Strong winds will blow infield dirt into the adjacent grassy areas and can cause large lips to build up during the winter.

Boards or slit fences can reduce blowing dirt, Minner says. "Another simple method is to lay down 2x4 boards along the dirt infield and adjacent to grass where the lip usually starts to form. Lay the boards flat and stake them if needed," he continues. "Dirt piles up on the boards and is easily removed in the spring."

skills, not agronomic skills, come to the forefront.

Minner also notes that pre-emergent herbicides, like pendimethalin, can be applied in late fall, following the playing season, to prevent early germinating knotweed that is especially troublesome in high traffic areas.

"Fall-applied, pre-emergent herbicides should not be used in areas of the field where turfgrass seed is used in the fall or spring," Minner warns.

Lastly, he notes that sod is often a better solution to fixing small wear areas. It is more expensive than seed, but gives an instant solution for worn goal boxes and spots between hash marks.

"Even if the sod doesn't thoroughly root down in the fall it will give you a jump on the spring season and finish rooting in the spring," Minner says.

*Chris Harrison is a veteran writer who covers turf stories coast to coast. ■*





# STMA Conference Program 2007

## THURSDAY, JANUARY 18

This session kicks off with concurrent sessions in 6 areas from 8:00 - 11:15AM.

### Concurrent Sessions

8:00 - 11:15AM

#### TRAFFIC

**Moderator: John Stier, Ph.D.,  
University of Wisconsin**

8:00 - 8:45AM

#### Investing in Safe High Use Community Fields

**Joann Gruttadaurio, Cornell University**

Learn ways to communicate effectively the importance of safe sports fields and the benefits and costs of implementing best management practices. Also learn strategies to use when working with and involving community leaders and groups to secure support and resources for managing these high-use sports fields.

8:45 - 9:30AM

#### Variety Selection and Management of Kentucky Blue Grass

**Brad Park, Rutgers - The State  
University of New Jersey**

This presentation will report on the results of traffic tolerance trials conducted at Rutgers University on the National Turfgrass Evaluation Program (NTEP). Kentucky bluegrass tests, as well as research examining the effects of seasonal wear applications and individual traffic components on Kentucky bluegrass varieties. This research provides practical information that can aid sports field managers in the selection of Kentucky bluegrass varieties for sports fields.

9:30 - Break

9:45 - 10:30AM

#### Keeping High Trafficked Athletic Fields Safe and Playable: Going Beyond Traditional Sound Agronomic Practices

**Jason Henderson, Ph.D., University of Connecticut**

This presentation will cover the latest techniques to solve the perennial challenge of maintaining turfgrass cover on areas of athletic fields that receive the most intense traffic. In addition, this

seminar will offer nontraditional methods that will help alleviate this problem.

10:30 - 11:15AM

#### Management Strategies for Intense Traffic

**Mike Goatley, Ph.D., Virginia Tech**

This presentation will consider how factors such as turfgrass varietal selection, chemical, cultural, and use management programs can be applied to optimize turf density and playing quality under heavy traffic conditions.

#### FIELD CONSTRUCTION

**Moderator: James McAfee, Ph.D., Texas  
Cooperative Extension**

8:00 - 8:45AM

#### One Percent is Not Enough

**Norman Hummel, Ph.D., Hummel &  
Co. Inc.**

This presentation will discuss some principles of field designs as they relate to surface drainage, a discussion on field surface drainage options, including proper pitch/slope, bypass systems, soil modification, and sand based systems.

8:45 - 9:30AM

#### You Want What? A Guide to Specification Writing for Sports Facilities

**Jeffrey L. Bruce, Jeffrey L. Bruce & Co.  
LLC**

This session will demystify writing clear specifications by providing an understanding of the basic organization and structure of specifications. Developing a good solid understanding of specifications systems is critical for the success of anyone that manages construction projects. Learn about the products, services and industry resources available to you as well as common pitfalls of writing construction specifications.

9:30 - Break

9:45 - 10:30AM

#### Tubby Raymond Field at the University of Delaware

**Sam Jones, University of Delaware  
Tom Taylor, University of Delaware**

Presentation will show the progression of construction and maintenance of this field from "grass and dirt" through a modified Cambridge System to a 100% sand based system. Included will be the team approach to restoring a field with reps from Athletics, Grounds Services and Facilities Planning and Construction. After a disastrous 2005 game in heavy rain the relocation of the next home game to the opponent's field due to poor field conditions, the University of Delaware made a commitment to make emergency repairs to finish the 2005 season and to build a new field ready for play in September 2006.

10:30 - 11:15AM

#### Do I Have to Rebuild my Field?

**John Mascaro, Turf-Tec International**

We will look at a series of over 100 photographs showing how to know when it is time to re-build your field. From visual testing to testing with ASTM Standards, you can determine how good or bad your field is and whether it is time for reconstruction. If reconstruction is necessary, we will look at the new ASTM Standards for doing it with some old school knowledge. If the field doesn't need reconstruction, we will look at how to bring it back to life.

#### ECO-BALANCED ATHLETIC FIELDS

**Moderator: Grady Miller, Ph.D., North  
Carolina State University**

8:00 - 8:45AM

#### Minimizing Pesticides - Innovative Solutions for Intensely Trafficked Fields

**Frank S. Rossi, Ph.D., Cornell  
University**

Learn how to manage high traffic sports turf with limited inputs and especially no pesticides. It stresses identifying your high traffic areas and focusing your inputs where you need them most.

8:45 - 9:30AM

#### Competitive Turf: Overseeding for Weed Management

**Eric M. Lyons, University of Guelph**

In sports field management, overseeding is primarily used to facilitate quick recovery from



# For perfect diamonds as easy as 1,2,3!

## 1. EDGE IT

With its adjustable guide shoe, the Bannerman **Diamond Edger** is surprisingly easy-to-use. Its three-inch blade depth and reversible, 20-inch concave disc work together to quickly eliminate ridging. Debris is spiraled into the infield for fast and easy clean-up.



DIAMOND EDGER: MODEL NO. B-DE-20



DIAMOND MASTER: MODEL NO. B-DM-6

## 2. GROOM IT

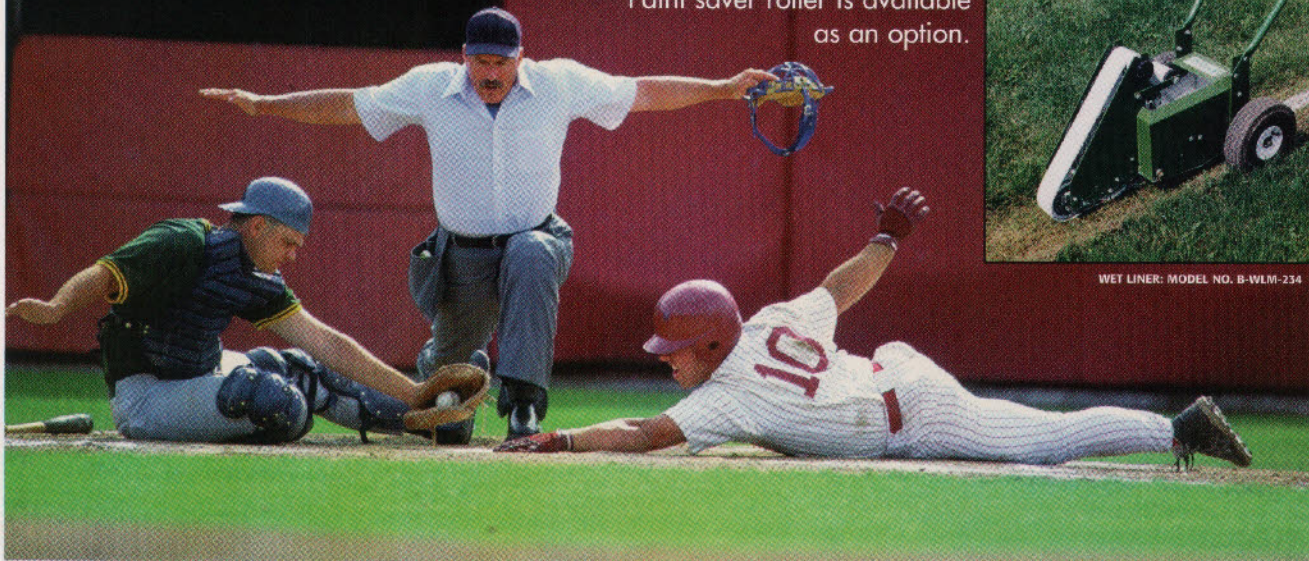
The **Diamond-Master**® (pictured) and **Ballpark-6**® groomers will give your ball diamonds a surface just like the professional teams demand, and reduce the time, effort and labour required to do the job.

## 3. LINE IT

The Bannerman **WetLiner** is a simple, practical tool for line marking of turf surfaces. Other wet liners spray, while our WetLiner paints each blade of grass to the ground for solid, longer lasting lines. Paint saver roller is available as an option.



WET LINER: MODEL NO. B-WLM-234



[www.sportsturfmagic.com](http://www.sportsturfmagic.com)

CANADA 1-800-325-4871

USA 1-800-665-2696

41 Kelfield Street, Rexdale, Ontario, Canada M9W 5A3

# Bannerman

## THE HOME OF SPORTSTURF MAGIC





## Program 2007

traffic and heavy use. Weed reduction and prevention has been observed as a result of overseeding. This presentation will discuss a current research project with field plots at the Guelph Turfgrass Institute, the University of Guelph, and the municipality of Oakville in Ontario.

### 9:30 - Break

### 9:45 - 10:30AM

#### **Sports Turf IPM: Theory vs. Reality**

#### **Rich Watson, Pine Hill Public Schools**

This presentation will show what happens when the IPM strategies don't exactly mesh with the realities of life in a K-12 school district.

Communication, preparation, education, product selection, and having an open mind to try new things will be key topics of the discussion.

### 10:30 - 11:15AM

#### **Components of an Effective Organic Fertility Program for Cool Season Sports Field**

#### **Mary Owen, University of Massachusetts at Amherst**

Understand the characteristics of organic fertilizer materials and how to incorporate these materials into an effective integrated management system.

### **SYNTHETIC FIELDS**

#### **Moderator: Darian Daily, Cincinnati Bengals**

### 8:00 - 8:45AM

#### **The New Synthetics: Where We Are 7 Years Later**

#### **Webb Cook, A-Turf, Inc.**

Join this open format where you can discuss the management of the new synthetics, the different issues we are now seeing on fields that are five years and older, and focus on specific experiences that a number of different turf managers have seen with these types of fields.

### 8:45 - 9:30AM

#### **The Replacement Process of a Synthetic Field**

#### **Debra Kneeshaw, City of Portland Parks and Recreation**

Including setting up a replacement fund upon installation, collecting funds for replacement, removing and reusing the original synthetic field and infill, and reinstallation without disruption of base.

### 9:30 - Break

### 9:45 - 10:30AM

#### **Bringing Synthetic Turf to Life**

#### **Jay Warnick, CSFM, BYU-Idaho**

A discussion about the impacts of synthetic turf on our industry, and the facilities we work at. Some tips on how to enter into the planning phase and making sure your voice is heard.

### 10:30 - 11:15AM

#### **What You Need to Know About Synthetic Surfaces**

#### **Mark Nicholls, Sportexe**

This presentation will provide detailed discussions regarding the key items to consider before purchasing a synthetic surface and how to maintain synthetic surfaces professionally.

### **BASEBALL INFIELD MIXES**

#### **Moderator: Craig Potts, Texas A&M University**

### 8:00 - 8:45AM

#### **Infield Management for all Levels of Participation**

#### **Mike Schiller, CSFM, Lake Forest Academy**

This session will cover infield management at all levels of competition. You will be shown pictures and techniques that have been seen or used over the last 36 years. Various types of materials available for infield maintenance will be discussed.

### 8:45 - 9:30AM

#### **Maintaining Skin Area in the NCAA Environment**

#### **Kris Harris, Georgia Tech.**

Theories on infield skin maintenance and why they may not work for you. A normal day of infield skin maintenance, and why it all starts in December.

### 9:30 - Break

### 9:45 - 10:30AM

#### **Evaluating Skinned Infield Maintenance Procedures**

#### **James Brosnan, Penn State University**

This presentation will review the results of a study of skinned infield maintenance procedures conducted at Penn State in 2006. The affects of various levels of sub-base compaction, soil texture, calcined clay application rates, dragging practices, and irrigation regimes on ball bounce (pace), surface hardness, and traction will be discussed. Pennbounce, a unique piece of research equipment designed to measure the pace of skinned infields, will be discussed as well.

### 10:30 - 11:15AM

#### **East and West Coast Infield Variations**

#### **Bill Deacon, New York Mets**

This presentation will focus on differences and similarities in managing infields at the professional level on the East and West coasts. It will also include what changes we have made at Shea Stadium this past year.

### **BUDGETING & COMMUNICATING FOR THE PROFESSIONAL**

#### **Moderator: George Trivett, CSFM, Hudson Middle School**

### 8:00 - 8:45AM

#### **Developing Efficiencies, Creating Alternative Funding Sources for Sports Field Maintenance**

#### **Jim Carr, Jim Carr & Assoc.**

This session will address the importance of continually looking for and developing efficiencies in your operation, while at the same time identifying and creating alternative funding sources for maintenance activities. Participants will learn successful strategies being used by resourceful public agencies and private facilities across the country.

### 8:45 - 9:30AM

#### **Working with Volunteers**

#### **Jeffrey T. Fowler, Penn State University**

We never have enough help on our fields, yet many parents bring kids to our fields to play.

*Continued on page 18*





**Synthetic Turf Groomer  
with GreensSlicer®  
Spring Tine Rake.**

**Fast, Efficient Grooming  
of all filled synthetic  
sports fields!**

**FEATURES and BENEFITS**

- Synthetic Sports Turf Groomer works with all fill material currently used, in both wet and dry conditions.
- Patented brush design lifts turf fibers leaving them in a plush, upright position. Brushes move fill to low spots or depressions left after play.
- Synthetic Super Duty Blue Brushes retain their original shape, resist wear, and will not rot.
- GreensSlicer Spring Tine Rake consists of 3 rows of 28 tines spaced 7/8 inch apart for thorough coverage.
- Each row of tines may be adjusted to the desired level of aggressiveness.
- The GreensSlicer combs through the fill material, relieving compaction and assuring a soft, level playing surface.

**Call for additional information  
on our line of  
Synthetic Turf, Natural Turf,  
and Clay surface Groomers**

**888-298-8852 Fax 317-298-8852  
www.greensgroomer.com**

**GreensGroomer WorldWide, Inc., Indianapolis, IN**  
Copyright © 2005 GreensGroomer WorldWide, Inc. All rights reserved.  
U.S. Patents 5833013, 6655469. Other Patents Pending.



**Synthetic Super Duty Blue Brushes**  
Resist wear and will not deteriorate from moisture.



**GreensSlicer Spring Tine Rake**  
3 rows of 28 tines.





## Can you identify this sports turf problem?



**Problem:** Green lines on grass in winter

**Turfgrass Area:** Grass tennis courts

**Location:** Northern Central U.S.

**Grass Variety:** Bentgrass

### Answer to John Mascaro's Photo Quiz on Page 38

John Mascaro is President  
of Turf-Tec International



## January 17-20, 2007 STMA Annual Conference & Exhibition

San Antonio Marriott Rivercenter and Henry B. Gonzalez Convention Center.

### Tuesday, January 16

- 2:00 - 7:00PM Registration & Merchandise Open
- 4:00 - 8:00PM STMA Certification Exam *(pre-qualification and pre-registration required)*
- 4:00 - 8:00PM Chapter Officers Training (COTS) and Idea Exchange Session. *Reception immediately following.*

### Wednesday, January 17

- 6:30AM - 7:00PM Early Registration
- 6:45AM - 3:00PM Optional: SAFE Golf Tournament - sponsored by Jacobsen, a Textron Company *(additional fee of \$125 before 12/15/06 or \$150 after 12/15/06 and pre-registration required)*
- 7:00AM - 3:00PM Optional: Seminar on Wheels Tour of Sports Facilities *(additional fee of \$60 before 12/15/06 or \$70 after 12/15/06 and pre-registration required)*
- 4:30 - 6:30PM Sports Turf Networking Kick-Off
- 7:00 - 7:30PM First Time Attendees Get Together Reception
- 7:30 - 10:00PM Welcome Reception

### Thursday, January 18

- 6:45 - 7:45AM Networking Breakfast: A Forum for Women in the Industry
- 7:00AM - 7:00PM Registration & Merchandise Open
- 7:30 - 8:00AM Continental Breakfast
- 8:00 - 11:15AM Concurrent Educational Sessions
- 11:30AM - 12:45PM Lunch and STMA Annual Meeting
- 1:00 - 4:00PM General Sessions

4:00 - 8:30PM

8:30 - 9:00PM

Grand Opening of the Trade Show/Reception  
SAFE Live and Silent Auctions

### Friday, January 19

- 6:45 - 7:55AM CSFM Breakfast
- 7:00AM - 5:00PM Registration & Merchandise Open
- 7:30 - 8:00AM Continental Breakfast
- 8:00 - 10:00AM 3rd Annual Student Collegiate Challenge
- 8:00 - 10:00AM Concurrent Educational Sessions
- 10:00AM - 2:45PM Trade Show Open with Lunch
- 3:00 - 5:15PM Educational Sessions/PM Workshops
- 6:30 - 7:30PM Pre-Awards Banquet Reception
- 7:30 - 10:00PM Awards Banquet

### Saturday, January 20

- 7:00 - 7:55AM Past Presidents' Breakfast
- 7:00AM - 12:00PM Registration
- 7:30 - 8:00AM Continental Breakfast
- 8:00AM - 12:00PM Educational Sessions *(additional fee of \$30 and pre-registration required)*
- 8:00AM - 12:00PM Certification Exam
- 9:00AM - 4:00PM Optional: Offsite Seminar/Workshop conducted by MLB/NFL/MLS *(additional fee of \$60 before 12/15/06 or \$70 after 12/15/06, and pre-registration required)*
- 12:15 - 1:15PM Lunch



# SportsTurf

MANAGERS ASSOCIATION

## STMA 18TH ANNUAL Conference & Exhibition January 17-20, 2007 San Antonio, Texas

### HANDS-ON TRAINING • EDUCATION • EXHIBITION

- 66 educational sessions/workshops. Plus an optional MLB/NFL/MLS hands-on outdoor seminar.
- See new technology at the Trade Show.
- Conference Package includes meals.

*Bring your team to San Antonio  
and network with other industry  
professionals.*

For details call: 401-847-8622  
or 1-866-847-8623  
To register call: 1-800-323-3875  
or [www.sportsturfmanager.org](http://www.sportsturfmanager.org)







## Program 2007

This session will talk about ways to involve volunteers in our field maintenance calendar.

**9:30 - Break**

**9:45 - 10:30AM**

### **Communicating with Coaches**

**Eric Fasbender, University of Oregon**

Believe it or not, coaches can play a key role in how our fields look and perform. This session will explain how to communicate effectively with your coaches to eliminate their headaches as well as yours.

**10:30 - 11:15AM**

### **Behind the Scenes at Beaver Stadium- A View from the Crew**

**Paul Curtis, Penn State University**

The talk provides an insight into what our crew does at Penn State, ideas and inventions we have come up with and questions will be answered from anyone who wants to see how a "guy on the crew" would react to ideas they have.

### **GENERAL SESSION**

**1:00 - 4:00PM**

**1:00PM**

### **General Session 1 - International Development in Sports Turf Management**

**Introductory Remarks - STMA**

**President Michael Trigg, CSFM**

*Superintendent of Parks, Waukegan Park District*

**Program Highlights - David Minner,  
Ph.D.**

*Iowa State University*

**Turfgrass Research - Trey Rogers, Ph.D.**

*Michigan State University*

**Safety Research - John Orchard, Ph.D.**

*University of New South Wales, Australia*

**Innovative Practices - Martyn Jones**

*National Turfgrass Foundation, Manchester UK*

**2:45 - 3:00PM Break**

**3:00PM**



### **General Session 2**

**Keynote Address by Roy  
Firestone**

Critically acclaimed for his work in broadcast journalism, Firestone has won seven Emmy Awards and seven Cable ACE Awards. He has interviewed more than 5,000 people, including nearly every major sports figure. An accomplished singer, impressionist, and humorist, Firestone will deliver a thought provoking message in a vibrant multimedia show.

## **FRIDAY, JANUARY 19**

**8:00 - 10:00AM**

### **STMA Student Challenge presented in partnership with the SAFE Foundation**

**Moderator: Jeff Salmond**

### **Concurrent Sessions**

**8:00AM - 10:00AM**

### **SCHOOLS K-12**

**Moderator: Lance Tibbetts, CSFM**

**8:00 - 8:30AM**

### **Understanding Mathematics for Pesticide/Fertilizer Applications**

**Mark Hall, Texas A&M University**

This presentation will provide an explanation and examples of concepts such as rate/analysis, equalities and cancellation of units in calculations commonly encountered in turf grass management.

**8:30 - 9:00AM**

### **Avoiding Pitfalls in Sports Field Construction**

**James McAfee, Ph.D., Texas Cooperative  
Extension and Tommy Burnside,  
Burnside Services, Inc.**

Improper construction/renovation of sports fields in Texas is a common problem. This presentation will cover the basic steps to make sure proper specifications are developed for the job and show how to monitor the actual construction/renovation project.

**9:00 - 9:30AM**

### **Aerification Program for Sports Fields for Maximum Results**

**Larry Rider, Turgrass Professionals/Texas**

Learn how to assess your aerification program, how to maximize the benefits of aerification, and how to schedule aerification programs.

**9:30 - 10:00AM**

### **Developing A Weed Control Program for Your Sports Field**

**Hennen Cummings, Ph.D., Tartleton State  
University**

What has worked in the past and what will work in the future to control weeds in sports turf is presented for managers with varying equipment, budgets, time, and expectations. Weed control programs do not solely rely on herbicides for weed management. Find out what you can adapt to your program.

### **PARKS & REC**

**Moderator: Chris Calcaterra, CSFM**

**8:00 - 8:30AM**

### **Designing Irrigation Systems for Large Sports Field Complexes**

**Brad Waters, Rain Bird**

**8:30 - 9:00AM**

### **Controlling Fire Ants and Other Insects on Sports Fields**

**Jim Reinert, Texas A&M University**

This presentation will cover all turf insects/mites and fire ants as they impact sports fields. Their behavior, biology and management (cultural, and chemical/biological) will be outlined.

**9:00 - 9:30AM**

### **Managing Large Sport Field Complexes**

**Miles Studhalter, FC Dallas/Pizza Hut Park**

This presentation will give an overview of Pizza Hut Park, talk about daily maintenance, talk about events, number and type of events, and construction challenges.

**9:30 - 10:00AM**

### **Understanding Mathematics for Pesticide/Fertilizer Applications**

**Mark Hall, Texas A&M University**

See 8:00am-8:30am program for description.



# Program 2007

2007 STMA  
SAN ANTONIO

## PROFESSIONAL FIELDS

**Moderator: Abby McNeal, CSFM**

**8:00 - 8:30AM**

### Improving Your Value and Resume Building

**Ross Kurcab, CSFM, Denver Broncos**

Being a successful sports turf manager involves so much more than skills in the field. Today's sports turf managers can become a most integral part of the organizational plan, and in turn, they can elevate their position and professionalism. Whether you are a new rookie, or a wily veteran, you need to "Brand" yourself and your operation as a professional.

**8:30 - 9:00AM**

### Nutrient Management Strategies for Sand Based Sports Fields

**Richard H. White, Ph.D., Texas A&M University**

This workshop will provide participants with the knowledge to develop a nutrient management plan for sand based sports fields that enhances turfgrass performance and that is environmentally sound.

**9:00 - 9:30AM**

### Building and Managing Infield Dirt in a 2-Sport Venue

**Larry DiVito, Washington Nationals**

RFK Stadium in Washington, DC is the only venue in the country that hosts 2 major professional sports simultaneously from April to October and maintenance of the field requires creative thinking and flexible planning.

**9:30 - 10:00AM**

### New Field - Heavy Event Schedule, Manage to Survive

**Abby McNeal, CSFM, AEG/Toyota Park**

Toyota Park opened up in June, almost half way thru the MLS season and still has hosted 16 home games. The talk will be about how the staff handled the heavy loaded event schedule, including two concerts to home game turnovers, with a young field.

## COLLEGE/UNIVERSITY

**Moderator: Mike Andresen, CSFM**

**8:00 - 8:30AM**

### Benefits of Silicon in Turf

**Lawrence Datnoff, Ph.D., University of Florida**

This presentation will cover the benefits of silicon in the life and performance of turfgrass. General information will be given about silicon in soil, plants, and its affects on abiotic (i.e., heat stress, drought stress, mineral toxicities and wear tolerance) and biotic (plant disease and insects) stress.

## EVERGREEN™ Turf Blankets... ...trusted around the world!

**"Results Outstanding...,  
Could Not Believe..."**

wrote **Dann Daly**, Park Maintenance Supervisor,  
**Parks & Recr. Dept.**, North Smithfield, RI

- Earlier spring green-up
- Faster seed germination
- Deeper root development
- Delays dormancy in fall
- Ideal winter blanket
- 3 & 7 yr. warranty covers
- Best for quick turf repairs
- Available in any size

Want to know more?  
**CALL TOLL FREE  
1-800-387-5808**

**COVERMASTER™  
COVERMASTER  
COVERMASTER**

**MASTERS IN THE ART OF SPORTS SURFACE COVERS**

COVERMASTER INC., 100 WESTMORE DR. 11-D, REXDALE, ON, M9V 5C3 TEL 416-745-1811 FAX 416-742-6837

Fill in 119 on reader service form or visit <http://oners.hotims.com/9139-119>



Covers for football and soccer fields are also readily available.



Covered... Uncovered...



It works on the greenhouse principle, every time!

[covermaster.com](http://covermaster.com)

E-MAIL: [info@covermaster.com](mailto:info@covermaster.com)







## Program 2007

**8:30 - 9:00AM**

**Using New Heat Tolerant Kentucky Bluegrass Varieties in Sports Fields**  
**Travis Teuton, University of Missouri-Columbia**

This presentation will include fertility, mowing height, and herbicide tolerances of the new heat tolerant Kentucky bluegrass varieties.

**9:00 - 9:30AM**

**Understanding Surface Related Injuries**  
**James Brosnan, Penn State University**

This presentation will review the different types of surface related injuries that can occur in athletics, and will explain how excessively hard playing surfaces can cause injury.

**9:30 - 10:00AM**

**Don't Paint Yourself into a Corner: Know What's in Your Paint!**  
**Richard H. White, Ph.D., Texas A&M University**

This presentation will outline the reasons and preventions for acute and chronic injury to natural grass fields by field marking paints and colorants.

**PLAY IT AGAIN - POPULAR PROGRAMS REPEATED**

**Moderator: Jay Warnick, CSFM**

**8:00 - 8:30AM**

**Variety Selection and Management of Kentucky Bluegrass**  
**Brad Park, Rutgers - The State University of New Jersey**

This presentation will report on the results of traffic tolerance trials conducted at Rutgers University on National Turfgrass Evaluation Program (NTEP) Kentucky bluegrass tests as well as research about seasonal wear applications and individual traffic components on Kentucky bluegrass varieties. This research provides information that can aid sports field managers in the selection of Kentucky bluegrass varieties for sports fields.

**8:30 - 9:00AM**

**One Percent is Not Enough**  
**Norman Hummel, Ph.D., Hummel & Co., Inc.**

This presentation will discuss some principles of field design as they relate to surface drainage, a discussion on field surface drainage options, including proper pitch/slops, bypass systems, soil modification, and sand based systems.

**9:00 - 9:30AM**

**Bringing Synthetic Turf to Life**  
**Jay Warnick, CFSM, BYU- Idaho**

A discussion about the impacts of synthetic turf on our industry, and the facilities we work at. Some tips on how to enter into the planning phase and making sure your voice is heard.

**9:30 - 10:00AM**

**Evaluating Skinned Infield Maintenance Procedures**

**James Brosnan, Penn State University**  
This presentation will review the results of a study of skinned infield maintenance procedures conducted at Penn State in 2006. The affects of various levels of sub-base compaction, soil texture, calcined clay application rates, dragging practices, and irrigation regimes on ball bounce (pace), surface hardness, and traction will be discussed. Pennbounce, a unique piece of research equipment designed to measure the pace of skinned infields, will be discussed as well.

**Friday PM Workshops:**

**3:00 - 5:15 PM**

**Workshop #1 Maximizing Limited Budgets - Rational Decisions About Products and Field Management**  
**Robert Carrow, Ph.D., University of Georgia/Griffin Campus**

This presentation focuses on how to make rational and economic decisions for selecting new products and technologies by: a) determining how to identify primary, secondary, and perceived but non-existent problems, so that products/technologies can be targeted to real/basic problems; b) clarifying areas of confusion such as soil amendments, biostimulants, soil microbial additives, foliar applied materials, etc., and c) providing common-sense guidelines to determine when to use a new product or technology.

**Workshop #2**

**The Ten Commandments of Environmental Turf Craft**

**Kevin Trotta, North Rockland Central School District**

This presentation will address the art and science of sports turf management and environmental stewardship.

**Workshop#3 A Panel Discussion on Rubber Infill Systems**

**Leader: Darian Daily, Cincinnati Bengals**

**Webb Cook, A-Turf Inc.**  
**Debra Kneeshaw, City of Portland Parks & Recreation**

**Jay Warnick, BYU-Idaho**  
**Mark Nicholls, Sportexe**

An interactive discussion about the issues impacting rubber infill systems, including manufacturing and sales, construction and maintenance.

**Workshop #4 Student Workshop Work or Graduate School, What I Need to Know**

**Leader: Lynda Wightman, Hunter Industries**

This workshop is designed to help you determine which path is right for you: graduate school or entering the workforce.

**Putting My Education to Work**

**David Bicknell, Texas Rangers**  
**How Your Education Can Benefit My Facility**

**Raechel Volkening, CSFM, Milwaukee Brewers**

**Transitioning Your Bachelors Degree to an Advanced Degree**

**John Sorochoan, Ph.D., University of Tennessee**

**A Graduate Student's Perspective on Graduate School**

**Graduate Student Scholarship Winner**

**Workshop #5**

**Assessing Sport Field Conditions With New Technologies - Using Sensors, GPS and GIS Maps to More Efficiently Manage Turf**

**Van Cline, Ph.D., The Toro Company**

Several technologies are emerging that will help