

Answer: from page 18



This depression was caused by a fallen cement light pole as a result of Hurricane Wilma. When the hurricane hit South Florida, the Boynton Beach Little League Park was one of the many fields that fell victim to the storm. This 24-inch diameter cement light pole was not pulled from the ground but actually broken at the base, and subsequently fell on the field, crushing fencing netting and bleachers not to mention turf. The pole remained on the turf for more than 2 months until the city could find a crane company that was available to lift the poles off the field. Shortly after this photo was taken the field was rebuilt entirely with volunteer labor and funds and featured on ABC's "Extreme Makeover: Home Edition" reality show that aired last March 30 as a rebuilding effort after the Hurricane season of 2005.

Thank you to Jody Rivers, Parks Manager for the City of Boynton Beach for allowing me to take these photos. ■

If you would like to submit a photograph for John Mascaro's Photo Quiz please send it to John Mascaro, 3669 NW 124th Avenue, Coral Springs, FL 33065 or email to john@turf-tec.com. If your photograph is selected, you will receive full credit. All photos submitted will become property of SportsTurf magazine.

STMA in Action

STMA has a strong history of volunteerism and this year STMA has the highest number of volunteers involved since the association began in 1981. Some subcommittees are forming now to manage projects developed by the umbrella committee and others will be called upon later this year as needs arise.

It is STMA's goal to involve more members through committee service. To that end, STMA will be reorganizing its committee process this summer and will present its plan to the membership in the fall, with the new process in place for 2007.

2006 STMA Committees

Awards

To judge the association's awards program applicants selecting the Field of the Year winners, the Minor League Baseball Sports Turf Manager of the Year, and to develop strategies to enhance the programs.

Steve LeGros, Chair
Larry Berry, CSFM
Carol Gundlach, CSFM
Scott MacVicar
Chuck Pula
George Trivett, CSFM, Board Liaison
Jim Welshans

Bylaws

To develop association bylaws that are fair and enforceable, and clearly define the expectations for membership, governance processes, and board of directors service.

Ken Mrock - Chair
Michael D. Boekholder
Dale Getz, CSFM
Carol Gundlach, CSFM
Ross Kurcab, CSFM
Richard Miller

Mary Owen
Scott Pippen
James R. Rodgers, CSFM
David Rulli
David Schlotthauer
John Stier, Ph.D.
N. Grove Teates, Jr.
Jay Warnick, CSFM - Board Liaison
Steve Wightman

Certification

To develop strategies to grow the number of certified members; to consistently monitor the program and recommend enhancements to ensure that the program is the top achievement for sports turf managers.

Lance Tibbetts, CSFM - Co-chair / Board Liaison
Michael Schiller, CSFM - Co-chair
Eric Fasbender
Trent C. Hale, Ph.D.
Joe Kennedy III, CSFM
Anthony J. Koski, Ph.D.
Ross Kurcab, CSFM
Mary Owen
Rick Peruzzi, CSFM
Jesse Pritchard, CSFM
James R. Rodgers, CSFM
Waldo Terrell

Chapter Relations

To create a chapter structure that is beneficial locally and nationally; to financially assist chapters with their administrative, operations and educational efforts; to facilitate the sharing of best practices.

Dan Douglas - Chair
George Anderson
Chris Brindley
Richard Miller
Robert Studholme
Michael Tarantino
T.J. Thompson
Jay Warnick, CSFM - Board Liaison

Conference

To develop all content, sessions, workshops and off-site venues, and select speakers and moderators for the next year's conference that will make it a "must attend" event for members and nonmembers; to recommend strategies that will drive attendance to the exhibition and will add value to exhibitors.

Mike Andresen, CSFM - Chair
Andrea Dillinger
Bob Christofferson - Conference Tours subcommittee co-chair
Jeff Salmond, CSFM -

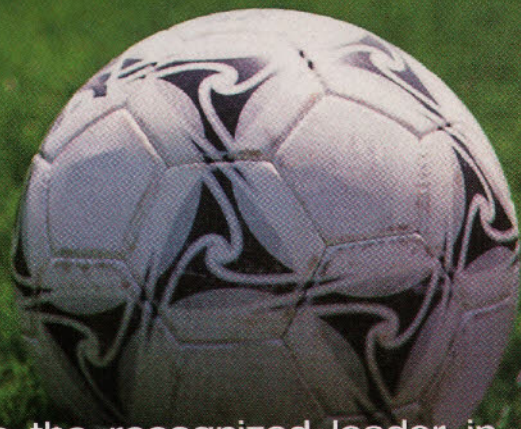
Conference Student Challenge subcommittee chair
Darian Daily - Conference Tours subcommittee co-chair
Tra DuBois - Conference Exhibition subcommittee co-chair
Dale Getz, CSFM - Conference Exhibition subcommittee co-chair
Abby L. McNeal, CSFM
David D. Minner, Ph.D. - Conference Education Chair
Craig Potts

Conference Education Subcommittee

David D. Minner, Ph.D. - Chair
Mike Andresen, CSFM
Darian Daily
Andrea Dillinger
Eric Fasbender
Leo Goertz
Roger Havlak
Bradley R. Jakubowski
James A. McAfee, Ph.D.
Abby McNeal, CSFM
Andrew McNitt, Ph.D.
Grady L. Miller, Ph.D.
Floyd Perry
Craig Potts
Shawn Ray
Connie Rudolph, CSFM
Pamela Sherratt
John Sorochan, Ph.D.

Continued on page 43

Invest in your future Join **STMA** today.



The Sports Turf Managers Association (STMA) is the recognized leader in championing the sports turf industry and its professionals. STMA members combine the science of growing turfgrasses and the art of maintaining fields to produce safe and aesthetically pleasing playing surfaces.

The three most important reasons for you to join STMA:

1. Job security

Take advantage of STMA's programs and services, and you proactively enhance your value to your employer.

2. Career success

The knowledge, skills and abilities you gain by accessing STMA's education and information can help you to prepare to take that next step in your career.

3. Recognition of your professionalism

STMA's advocacy with groups such as athletic directors, parks and recreation directors, coaches, and parents enhances the image of the entire profession.

The top three benefits you will receive as an STMA member:

1. A network of peers who are willing to share their best practices.
2. Opportunities for education to help you do your job better.
3. Quick access to information and resources to help you save time.

Application

Name _____

Title _____

Employer _____

Address _____

City _____ State _____ Zip _____

Phone _____ Fax _____

e-mail _____

Signature _____

Membership Category

Sports Turf Manager \$95

Please note the primary type of facility

Facility used by Professional athletes

College/University

Schools K-12

Parks & Rec

Commercial Company \$295

Additional Member from same company \$ 75

Student (with valid i.d.) \$ 20

Research/Teaching/Extension \$ 95

Chapter Dues (Call Headquarters for amount) \$ _____

Chapter Name _____

Contribution to SAFE Foundation for research, education and scholarship \$ _____

Total \$ _____

Payment Method (U.S. dollars)

Check Money Order Purchase Order # _____

Credit Card Mastercard Visa American Express Discover

Name on Card _____

Card # _____ Exp. Date _____

Signature _____

Cut
Here
to
Fax
or
Mail



SportsTurf

MANAGERS ASSOCIATION

Experts on the Field, Partners in the Game.

Sports Turf Managers Association
P.O. Box 414029, Kansas City, MO 64141

Ph. 800-323-3875 (785) 843-2549 fax: (785) 843-2977

www.sportsturfmanager.org email: STMAinfo@sportsturfmanager.org

Continued from page 41

George Spillman
John Stier, Ph.D.

Editorial

To insure that the STMA *SportsTurf* magazine contains information relevant to the sports turf manager; to provide ideas and contacts for articles; to provide aesthetic recommendations; and to provide guidance on functionality and readability.
Mike Andresen, CSFM - Chair
Chris Calcaterra, CSFM
Tra DuBois
Jeff Fowler
Tom Gmelch
Carl Larson
David D. Minner, Ph.D.
Larry Rhodes, CSFM
Eric Schroder
Jay Warnick, CSFM

Ethics

To provide a fair and unbiased council to investigate claims of ethics violations, determine if the claims have merit, and shepherd the appeals process.
Ken Mrock - Chair
Tom Burns
Amy J. Fouty, CSFM

Mary Owen
Scott Pippen
Troy Smith, CSFM
N. Grove Teates, Jr.

Finance and Audit

To provide oversight of the STMA's financial resources by reporting information to the Board of Directors on the annual budget, financial policies, investment policies and guidelines and the annual audit.
Chris Calcaterra, CSFM - Chair
Richard Buelter
Robert Curry
James Hlavaty
Richard T. Moffitt

Historical

To safeguard the history of the association. (Reorganizing due to the death of chair Kent Kurtz, Ph.D.)

Information Outreach

To develop educational and informational opportunities for members to enhance their personal and professional development
David D. Minner, Ph.D. - Chair
Theresa Bayrer
Steve Dugas, CSFM
Eric Fasbender

Jeffrey T. Fowler
Bradley R. Jakubowski
Gil Landry, Jr., Ph.D.
Andrew McNitt, Ph.D.
Grady L. Miller, Ph.D.
Pamela Sherratt
John Sorochan, Ph.D.

Membership

To develop initiatives to drive membership growth and retention; to recommend programs that add value for each member.
Lynda Wightman - Chair
Karsten Blackwelder
Bob Campbell, CSFM
Darian Daily - Survey Subcommittee Chair
Chad Follis - Student Subcommittee Chair
Amy Fouty, CSFM
Samuel O. Jones - Recruitment Subcommittee Chair
Marc Moran
Kevin Vos, CSFM
Victoria Wallace - Benefits Subcommittee Chair
Steve Wightman

Nominations

To provide to the membership a slate of officers and directors for

the annual STMA Board of Directors election in accordance with the STMA Bylaws.
Bob Campbell, CSFM - Chair
Tom Burns
Bob Curry
Gil Landry, Jr., Ph.D.
Scott Montague
Mary Owen
Greg Petry
David Rulli
Steve Wightman

Past President's Council

To offer advice and insight on the association's strategic direction.
Bob Campbell, CSFM - Chair
Stephen Cockerham
Murray Cook
Richard Ericson
David Frey
Stephen H. Guise
Mark Hodnick
Gil Landry, Jr., Ph.D.
Richard T. Moffitt
Greg Petry
George W. Rokosh
Michael Schiller, CSFM
Steve Wightman

Scholarship

To judge and select the winners

of the SAFE scholarships; to develop strategies to increase the number of applicants.
George C. Trivett, CSFM - Chair
Peter Ashe, CSFM
David Mellor
Scott Montague
Ken Mrock
John Rector
John Sorochan, Ph.D.
Lance Tibbetts, CSFM

Synthetic/Natural Turfgrass Task Group

To provide unbiased information about the selection, construction and maintenance of synthetic fields and natural grass fields.
Abby L. McNeal, CSFM - Chair
Michael D. Boekholder
Jim Brosnan
James Cornelius
Darby McCamy
Mike McGraw
Andrew McNitt, Ph.D.
Phil McQuade
Richard T. Moffitt
James Newberry
David Schlothauer
Tony Strickland, CSFM
David Wallace ■

*See our July issue for a listing of additional committees

STMA Chapter News

Sports Turf Managers

Association of Arizona: For information contact Darin Budak, CSFM at dbudak@goodyearaz.gov or 623/882-7616, or David Oropeza, at doropeza@cityofnogales.net or 520/285-5781.

Chesapeake Chapter STMA:

Glenn Sweet of Landon School in Bethesda, MD has been elected chapter President. He can be reached at glenn_sweet@landon.net. For information contact Graham Davis at gdavis@american.edu or call 301/495-5522.

Colorado Sports Turf

Managers Association: For more information visit www.cstma.org or call 303/346-8954 or President Ken Norkosky at 720/427-4174, or knorkosk@auroragov.org.

Florida #1 Chapter: For information visit the chapter's page on STMA's website or contact John Mascaro at

954/341-3115 or STMA@turf-tec.com.

Gateway Chapter Sports Turf Managers Association:

The next chapter event will be June 21 from 11-3 at Webster Groves @ Blackburn Park. For information contact Mark Vessel, St. Louis Youth Soccer Association at 636/940-7776 or vessel@slysa.org or Frank Schaffer at 636/940-7776.

Georgia Sports Turf

Managers Association: For information contact Skip Kirby at 770/928-1580 or skip@sportsturfmanagement.com.

The Greater L.A. Basin Chapter of the Sports Turf Managers Association:

For more call Carol Gundlach, CSFM at 909/594-5611 ext. 5174 or e-mail cgundlach@mtsac.edu.

Illinois Chapter STMA: For information call chapter secretary

Chapter Sponsors



Alpine Services, Inc.
Premium Athletic Fields ... For All Sports

syngenta

Libby Baker at 847/263-7603 or e-mail Bake60ft6in@aol.com.

Iowa Sports Turf Managers

Association: For information visit www.iowaturfgrass.org or contact Jeff Wendel at 515/232-8222 or fax 515/232-8228 or e-mail Jeff@iowaturfgrass.org.

Keystone Athletic Field Managers Organization

(KAFMO/STMA): The next Field Day will be June 27 at Cumberland Valley High School. Topics to be discussed include: top-dressing; field maintenance; logo painting; and IPM. Visit www.KAFMO.org for more information or call Linda at 717/921-8803. For information on the

Chapter visit www.KAFMO.org or contact Dan Douglas at 610/375-8469, ext. 212 or kafmo@aol.com.

Kentucky Sports Turf

Managers Association: The 2006 Field Day will be July 27-28 at Western Kentucky University in Bowling Green. For information go to www.kystma.org or contact Donnie Mefford at dbmeff00@email.uky.edu or call 859/257-1451.

Michigan Sports Turf Managers Association

(MiSTMA): For information visit their website at www.mistma.org or contact Chad Follis at 269/377-3340 or 269/381-0596

STMA Chapter News

or by email at chadfollis@farmn-garden.com.

Minnesota Chapter STMA: The Chapter will have their annual Tour on Wheels June 14. The event will stop at several points of interest, and end with a tailgate party and a St. Paul Saints baseball game. For information visit www.mstma.org or contact Tom Adamini at 952/953-2420 or tadamini@ci.apple-valley.mn.us.

MO-KAN Sports Turf Managers Association: The MU Field Day is July 11 in Columbia. For information contact Jody Gill at 913/239-4121 or at jgill@bluevalleyk12.org or visit www.mokanstma.org.

New England STMA (NESTMA): At our annual spring meeting we presented the first annual NESTMA awards. Sports Turf Manager of the Year Award went to Peter Thibeault of the Noble and Greenough School and the Sports Turf Vendor of the Year Award went to Pat Hogan from Sodco. Our Summer Field Day will be August 3 in South Kingstown, RI. This year the summer field day will involve a tour. Our first stop will be in South Kingstown at one of their outstanding park facilities. After coffee/snacks we will travel by bus to Allen's Seedstore to view their seed production operation. Our next stop will be at one of New England Turf's sod farms. We will then return to South Kingstown for lunch (Gold sponsored by the Tom Irwin Company). As always we will have time for vendors to display and discuss their products. Registration notices will be mailed in June/July. For information contact David Pinsonneault at 781/861-2757 or dpinson@ci.lexington.ma.us or Nick Caggiano at 603/589-3370 or caggianon@ci.nashua.nh.us.

Nebraska Sports Turf Managers Association: For information contact Jennifer Roeber at 402/441-4425 or by e-mail at jenr@saltdogs.com.

Sports Turf Managers of New York: The first event for the STMoNY is a Summer Field Day. The date is TBD. For information contact Mike Albino at 315/468-6225 or 315/427-1214 or mikealbino@earthlink.net or Kevin Meredith at 607/287-6609 or kimeredith@earthlink.net.

Sports Field Managers Association of New Jersey: SFMANJ will hold its annual Summer Field Day at the County College of Morris in Randolph June 28. The keynote speaker will be George Toma. The Field Day will feature hands-on demonstrations by leading industry vendors. In addition to equipment demonstrations, attendees will have the opportunity to attend educational presentations on pest management topics that will qualify for re-certification credits for licensed pesticide applicators. For further information contact SFMANJ at 908-730-7770 or hq@sfmanj.org, or visit the Chapter website at www.sfmanj.org.

Ohio Sports Turf Managers Association (OSTMA): OSTMA will be holding its Summer Field Day June 21. Come get ready for your fall sports with OSTMA as we tour the facilities at the Columbus Crew and The Ohio State University. There will be a focus on football and soccer as we look at native soil, sand-based and rubber infill systems. End the day with a networking session at a Columbus Crew game as they take on the New England Revolution! For more information visit www.ostma.org. For information call 614/354-1196 or Ostma@aol.com. The new

OSTMA address is PO Box 3426 Dublin, OH 43016.

Pacific Northwest Sports Turf Managers Association: The WSU/OSU annual Field Day will be held July 25. The event will be at our research facility, 15403 Bowman Hilton Rd. Puyallup, WA. 98372. The day is filled with educational stops put on by OSU, WSU Puyallup and Pullman turfgrass/crops and soils departments. For more information contact Matt Johns at 253/445-4538 or mjjohns@puyallup.wsu.edu.

Southern California Chapter: For information contact Michael Tarantino at 858/679-2526 or at MTarantino@powayusd.com.

South Carolina Chapter of STMA: The SCSTMA Sports Turf Demo Day will be July 18 at the Hendrix Street P&R Complex in Lexington, SC. The event is open to all SCSTMA sponsors to demonstrate sports turf equipment and supplies. For more information see the SCSTMA website or contact Bruce Suddeth at 864/503-5514 or by e-mail at BSuddeth@uscupstate.edu. The Clemson Summer Sports Turf Institute will be June 12-16 at P&A Building at Clemson University. For further information contact Dr. Haibo Liu at 864/656-6367 or at HaiboL@clemson.edu. For more information contact Bruce Suddeth at 864/503-5514 or at bsuddeth@uscupstate.edu or visit www.scstma.org.

Texas Sports Turf Managers Association: For information contact T. J. Thompson, President-Elect, at txturfmanager@1scom.net or 972/670-2138.

Tennessee Valley Sports Turf Managers Association (TVSTMA): The East Tennessee Field day will be held August 10 in conjunction with the University of Tennessee/Knoxville Turf Day. For more information contact Al Ray at 931/215-7956 or at ARay@maurycounty-tn.gov.

Virginia Sports Turf Managers Association: The VSTMA Annual Field Days will be held June 13-14 at Woodberry Forest School. June 13 will include a Scholarship Fund Golf Tournament, an educative Workshop and the Tailgate Reception. June 14 will be the Field Day proper with lectures and demonstrations. For information contact Bob Studholme at 703/324-8590 or robert.studholme@fairfaxcounty.gov.

Wisconsin Sports Turf Managers Association: Wisconsin STMA's next event will be the UW-LaCrosse Field Day June 15 with the opportunity to stay for a Loggers game. For more information contact Chris Brindley at 715/346-3622 or cbrindle@uwsp.edu.

FORMING CHAPTERS:

North Florida STMA Chapter: For information on the newly forming North Florida Chapter, contact Mark Clay at 904/633-6116 or Jay McCord at 904/448-2583.

Idaho STMA: For information, contact Greg Liggett, at 208/496-2421 or email him at liggett@byu.i.edu.

Nevada STMA Chapter: For information, contact Corey Angelo at 702/433-3113 or by e-mail at sls654ASCM@lesco.com. ■

REEL ROLLERS

A Revolutionary New Attachment
for Reel Type Lawn Mowers



- Adds weight to the front of the mower
- Creates stripe effect on lawns
- Rides to the highest contour of the yard
- Bolts up with original mower hardware
- Height adjustment & level of height is same as the original caster wheels



We Have Roller Kits For
20", 25", 27" Tru Cut Reel Mowers
20", 25" Trimmer Reel Mowers
20", 25" McLane Reel Mowers

Get the Reel Roller Advantage Today!
770-867-5442 or reelrollers@alltel.net
www.reelrollers.com

Manufactured and marketed by Reel Works in Winder Georgia

Fill in 135 on reader service form or visit <http://oners.hotims.com/9134-135>

A true team player.



In one efficient pass, the RotaDairon®
Soil Renovator™ accomplishes what
other machines only claim to do:
save you time and money on the
field.

For more information,
call 800.554.4863, fax 570.602.3053
or email rotadaironemrex@aol.com.



Fill in 136 on reader service form or visit <http://oners.hotims.com/9134-136>

PLAN FOR A WINNING SEASON



Stabilizer Solutions, Inc.
33 South 28 Street
Phoenix, Arizona 85034 USA
info@StabilizerSolutions.com

800-336-2468
tel 602-225-5900
fax 602-225-5902
www.stabilizersolutions.com

Fill in 137 on reader service form or visit <http://oners.hotims.com/9134-137>

MAKE THE SWITCH TO RED DIAMOND CONDITIONERS

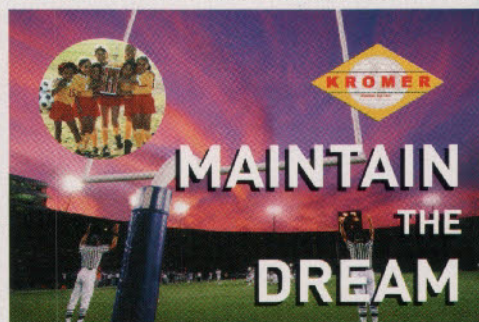


A QUANTUM LEAP TO A
SUPERIOR ATHLETIC FIELD

QUANTUM
TURF TECHNOLOGIES

800-264-5626 • www.moltan.com

Fill in 138 on reader service form or visit <http://oners.hotims.com/9134-138>



What Makes Teams Play Great?
KROMER!



The B200 —
Simply the best
"all in one"
Athletic Field
Maintainer, EVER!

"The KROMER'S great design, durable construction
and extremely low maintenance has proven to be one
of our best purchases..."
Robert Hartz
Stadium & Athletic Field Supervisor, Penn State University, PA

Call or visit our website today
to learn how Kromer is your
winning edge for athletic field
maintenance equipment!

1-800-373-0337 • www.kromerco.com

Our Field is Preparing Your Field

Fill in 139 on reader service form or visit <http://oners.hotims.com/9134-139>

SPORTS TURF IRRIGATION



WWW.ABI-IRRIGATION.COM

1-800-832-6224

THE NEW MICRO SERIES AT YOUR NEAREST DEALER!
THE IDEAL WATERING SYSTEM FOR SPORTSFIELDS,
LANDSCAPES, PARKS ETC.

WITH HOSE LENGTHS OF 150'-490' AND FLOWS OF 6-80 GPM.

ABI
irrigation

AGRI-BUSINESS INTERNATIONAL
P.O. BOX 909 VILLA RICA, GA 30180
PHONE: (770) 459-4401 FAX: (770) 459-6877

Fill in 140 on reader service form or visit <http://oners.hotims.com/9134-140>

Got Thatch?



GET A THATCH MASTER

60"/72" (Fairways/Athletic Fields)

Turf Specialties, Inc.
800-201-1031

www.turfspecialties.net

Fill in 141 on reader service form or visit <http://oners.hotims.com/9134-141>

PERMANENT PITCHER'S MOUNDS & BATTERS BOXES



Save time and money with these patented, poured red polyurethane, permanent outdoor Pitcher's Mound and Batter's Box Pads. Legal in College, High School, Babe Ruth, Pony and Little League Baseball. Great for recreational fields! Bury 2" below surface, eliminating deep holes and 95% of the maintenance in these high wear areas! Safe, long-lasting and provides the feel of properly packed clay. On-Deck Circles and Fungo Pads also available with non-skid granular surface. Some of the over 200 baseball and softball products available from "Your One-Stop Source for America's Baseball Surfaces and Supplies:"

PARTAC® /BEAM CLAY®
800-247-BEAM
WWW.BEAMCLAY.COM

Fill in 142 on reader service form or visit <http://oners.hotims.com/9134-142>



Performance. Durability. Quality.

The Shindaiwa T2510 trimmer is designed and built with professionals in mind.

- The T2510 is 24.5 cc, 1.1 hp (0.8 kW).
- Features our patented C4 Technology® high torque 4-stroke engine.
- Uses 50:1 mix. No dip stick!
- Quality 2-ring piston & chrome plated cylinder for maximum durability.
- All position carburetor with primer.
- Better fuel economy vs. equivalent 2-stroke.
- 2-year consumer warranty, 1-year commercial warranty.
- Limited lifetime warranty for solid drive shaft and major ignition components.

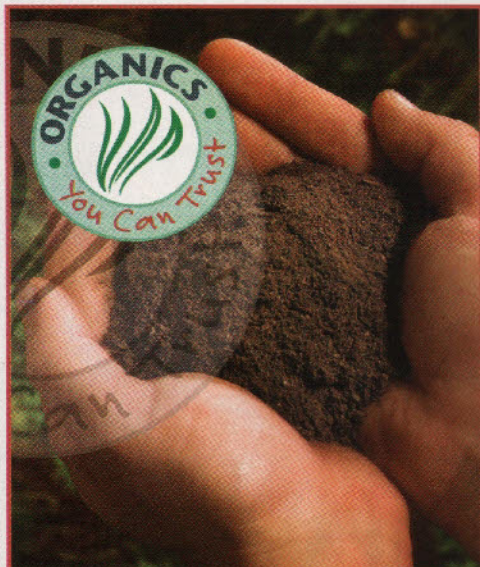
To find a dealer nearest you, call 800.521.7733
Or visit www.shindaiwa.com

shindaiwa

First to Start. Last to Quit.

11975 SW Herman Road • Tualatin, Oregon 97062

Fill in 143 on reader service form or visit <http://oners.hotims.com/9134-143>



Peat Inc.

golf • sports turf • horticulture

Organics You Can Trust

A Minnesota-based peat company servicing worldwide.

Peat, Inc. • Elk River, MN 55330 U.S.A.
www.peatinc.com • 763.441.8387 or 1.800.441.1880

Fill in 145 on reader service form or visit <http://oners.hotims.com/9134-145>

Super Clean Super Quiet

Model
TV40



Recirculating
Turf Vac

Turbo Vac Turf Sweeper

- Recirculated Air System keeps Dust to a Minimum!
- A self-contained vac. 20hp gas engine with a high capacity, low rpm fan to minimize noise and dust. Options include rotary broom and remote hose attachment.
- Works great on granular rubber and simulated turf!
- Cleans up cigarette butts and sunflower seeds!



We Stand Out from
the Competition.

Toll Free 800-835-1042
www.harperindustries.com

HARPER INDUSTRIES, INC.
Gosssett

151 East Hwy. 160
Harper, Kansas 67058
info@harperindustries.com

Fill in 161 on reader service form or visit <http://oners.hotims.com/9134-161>

GBS 1200 VERTICUTTER



belt driven both sides
offset mounting
48" cutting width

graden usa inc
7309 capehart road
richmond, va 23294
ph: 804 249 9950
fx: 804 249 9951
em: michael@gradenusa.com

CALL FOR YOUR FREE DEMO!

GRADEN

www.gradenusa.com

Fill in 147 on reader service form or visit <http://oners.hotims.com/9134-147>

LINE UP

Mash-Mark Painting System

Made of lightweight aluminum & FOLDABLE.
Self-aligning, 5 yard units.



Aluminum

4x6 in size, made of 1/8" aluminum
Offsets built-in for quick alignment
Three font types available

The Only Painting System
You'll Ever Need.

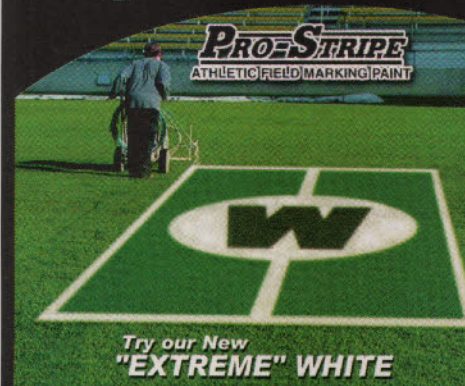
888-780-4441



Diversified Sports Specialties
www.DSSworks.com

Fill in 148 on reader service form or visit <http://oners.hotims.com/9134-148>

Major League Look on a Minor League Budget...



Try our New
"EXTREME" WHITE

Contact Whitlam for all your
sports field marking needs..

Paint • Stencils
Stripers • Aerosols

Call:
800-321-8358

WHITLAM
PAINT COMPANY
QUALITY COATINGS SINCE 1900

whitlampaint.com

Fill in 149 on reader service form or visit <http://oners.hotims.com/9134-149>

CL185 CONE LASER



Easily adjustable
head makes
dialing in your
desired cone
quick and easy.



Excellent for use with a rod mounted
receiver or machine control
applications. With an adjustable range
of flat to -1.85%, this laser is a sports
field contractors most valuable tool.



"Over 20 years of experience
in the sports field industry."

1-800-972-5273
LASERFORCELLC.COM

Fill in 146 on reader service form or visit <http://oners.hotims.com/9134-146>

Supreme-Green™ Turf Growth Cover

Supreme-Green is a multi-purpose turf growth cover
made of a specially designed material to provide
early green-up, accelerated germination and winter
protection. The Supreme-Green cover encourages root
development and rapid growth while extending your
spring and fall seasons.

Supreme-Green turf growth cover is specifically
engineered to promote earlier openings by 2 -3 weeks.

- Reduces seed loss
- Promotes earlier root establishment
- Accelerates Germination
- Reduces frost and ice-damage
- Porous to allow water and air circulation
- Mildew and rot resistant
- Quick turf repairs



Specifications:

- Made of tough woven non-coated polyethylene material
- UV treated for long life
- Green tint for best heat build-up
- One piece construction
- Comes complete with anchor pegs and storage bag

279 Humberline Dr. Etobicoke, Ontario M9W 5T6
Phone: 1-800-837-8961
Fax: (416) 798-1342
E-mail: sales@coverttechfab.com
Website: www.coverttechfab.com

Fill in 150 on reader service form or visit <http://oners.hotims.com/9134-150>

THE BLECAVATOR



ONE PASS PERFECTION

From 52" - 160" working widths

RESHAPING THE FACE OF NATURE

BLEC
USA, INC.

864.225.3666 • www.blecusa.com

Fill in 151 on reader service form or visit <http://oners.hotims.com/9134-151>

LANDS Expo

Continuing Education for Sports Turf Managers

Session LE22

Sponsored by STMA

Managing Healthy Sports Fields

Tom Samples, Ph.D., University of Tennessee
Paul Sachs, North County Organics

Many of today's new products and technologies can help sports turf managers maintain healthy, wear-resistant turfs. Timely mowing, fertilization, watering, aeration and pest control are fundamental. Learn that the vast majority of soil organisms are beneficial in a functioning ecosystem.

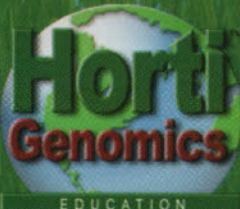
Multiple Accreditation Available for Only \$30

Register online at

 **GreenIndustryEducation.com**
Your Continuing Education Oasis
877.964.6222

Fill in 154 on reader service form or visit <http://oners.hotims.com/9134-154>

BECOME A CERTIFIED SUSTAINABLE LANDSCAPER



Visit **HortiGenomics.com**

Deminishing resources and client demands have made Sustainable Landscapes extremely important. This valuable certification is a must for any industry professional.

 **GreenIndustryEducation.com**
Your Continuing Education Oasis
877.964.6222

Fill in 153 on reader service form or visit <http://oners.hotims.com/9134-153>

LANDS Expo

Continuing Education for Sports Turf Managers

Session LE02


Pesticides on Turfgrass

Jay Gan, Ph.D., University of California, Riverside
Bruce Kidd, Dow Agro Science

Maintenance of high quality sports turf, including golf courses, rely on the adequate use of pesticides in order to protect against pests, and restore the competitive balance in favor of the turf. This session will cover two facets of pesticides on turfgrass. One will be the fate of pesticides in the environment and strategies for minimizing pesticide runoff and offsite movement. The other will cover cultural and chemical practices for managing specific weeds in turfgrass with various stressful conditions. Examples will be drawn from golf courses and professional sports fields, all the way down to your children's beat-up soccer fields, with suggestions how you can help create and maintain a safer and better performing turfgrass.

Multiple Accreditation Available for Only \$30

Register online at

 **GreenIndustryEducation.com**
Your Continuing Education Oasis
877.964.6222

Fill in 152 on reader service form or visit <http://oners.hotims.com/9134-152>

SportsTurf MANAGERS ASSOCIATION Online Training

STMA Members - \$30 each
Non-members - \$50 each

Session OC01 - Schools K-12

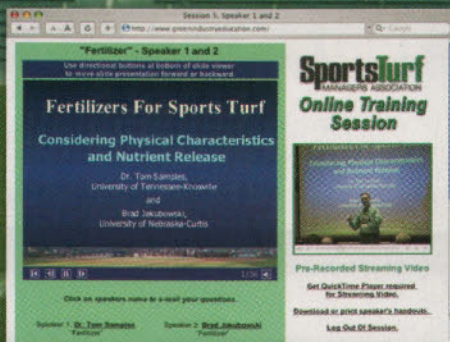
Speaker 1 - Floyd Perry, Grounds Maintenance Services
Speaker 2 - Dr. Grady Miller, University of Florida
Speaker 3 - John Mascaro, Turf-Tec International
Speaker 4 - Dr. John Cisar, University of Florida

Session OC02 - Parks & Recreation

Speaker 1 - Preston Courtney, Disney Wide World of Sports
Speaker 2 - Floyd Perry, Grounds Maintenance Services
Speaker 3 - Bill Berry, City of Rock Hill
Speaker 4 - Richard Sanger, Sarasota County

Workshop OC03 - Developing A Master Plan

Speaker 1 - Francois Hebert, Consultant



Workshop OC04 - Building Athletic Fields

Speaker 1 - Dr. Chuck Darrah, CLC Labs
Speaker 2 - Boyd R. Montgomery II, The Toro Company
Speaker 3 - Mark Heinlein, The Motz Group


Workshop OC05 - Fertilizer

Speaker 1 - Brad Jakubowski, University of Nebraska
Speaker 2 - Dr. Tom Samples, University of Tennessee

Demonstration OC06 - Outdoor Demonstrations

Speaker 1 - Dr. Roch Gaussoin
Speaker 2 - Floyd Perry, Grounds Maintenance Services
Speaker 3 - Preston Courtney, Disney Wide World of Sports

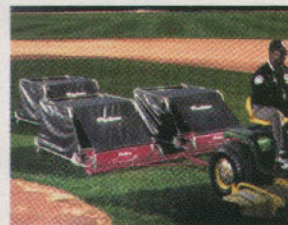
For STMA Online Training information and registration, visit

 **GreenIndustryEducation.com**
SportsTurf Managers Association (800) 323-3875

Fill in 128 on reader service form or visit <http://oners.hotims.com/9134-128>

Minuteman Parker®

Minuteman Parker's Estate Master® Lawn Sweeper covers a 100 inch sweeping path and has a 51 cubic foot capacity. It easily picks up grass, leaves, twigs and other lawn debris. This model works great on golf courses, athletic fields, parks and other large turf areas.



For more information on the Estate Master or any Minuteman Parker's fine line of outdoor maintenance equipment, please call 800-323-9420 or visit our website at www.parkersweeper.com

See our online product demo at: <http://oners.hotims.com/9094-300>

Fill in 144 on reader service form or visit <http://oners.hotims.com/9134-144>

Rolling revisited

BY DR. GRADY MILLER
Professor, University of Florida

Questions? Send them to Grady Miller at the University of Florida, PO Box 110670, Gainesville, FL 32611, or email gmiller@mail.ifas.ufl.edu.

Or, send your question to David Minner at Iowa State University, 106 Horticulture Hall, Ames, IA 50011 or email dminner@iastate.edu.

Q: *I am the head baseball coach at a Pennsylvania school. Our field has poor drainage and poor turf. I was rolling the field to make it safe for the players because it is so rough and bad bounces occur. Someone told me that at a University conference he was told to not roll the field because it will destroy roots, among other things. Could it be rolled then aerified? Is this true or is this just for perfect fields or ones that have good turf to work with? We are no longer able to roll the field and it is VERY unsafe for the kids with the bad hops we continue to get. I believe safety is first on baseball fields.*

– Concerned coach

Thanks for your e-mail. Sounds like your field is typical of a lot of fields I see. You do not say if you thought your poor drainage was due to the soil's characteristics or due to its hardness (or both). Also, what is causing the uneven surfaces/bad bounces? Is compaction a significant factor causing your poor turf?

If your field is being used a lot, then I would recommend aerification as often as possible to alleviate the compaction and improve its drainage characteristics. The amount of damage from rolling is dependent on a number of things: soil type, weight of roller, soil moisture when rolled, etc.

I did a quick search after starting this response and found that my colleague at Iowa State, Dr. Dave Minner, wrote in this space last year (September issue) on this very topic. He gave some information on weight and surface area of rollers. A summation statement of his article suggests that "under some circumstances rolling is a necessary and effective means of improving the playing surface of athletic fields." Perhaps the information provided in the University conference you mentioned was related to more specific situations that resulted in some turf rooting problems without considering playability issues.

To test my philosophical theory, earlier this week I asked several of my colleagues from around the country their opinions and experience with rolling. Everyone I talked to indicated they believe rolling athletic fields can be very beneficial in moderation. In fact one person reminded me that lightweight rollers are often used to replace a mowing on golf greens to smooth the surface and increase ball roll.



Rolling once per week has been done without any significant detriment to the green. Of course rolling can physically damage grass and can certainly increase soil bulk density. A higher bulk density translates into harder fields and reduced water infiltration. It sounds like you already have these problems, but it is still not a reason to eliminate rolling from your cultural practices, especially if you feel that it is making a difference in safety of your field. But do not rely on rolling alone.

With rolling, you will likely also need to increase your aerification to address compaction. Be careful to not roll so much that you cause above ground turf damage and use as light a weight of roller as you can that still provides some smoothing benefit.

How do you decide whether to roll, then aerify or aerify and then

roll? Well, it depends on what you are trying achieve and what types of aerification and roller you have.

If your roller is very heavy and does not disperse its weight well, if you aerify and then roll you can really rut up a field. But if you roll and get the field so compact and then try to aerify you may effectively reduce your aerification depth and minimize the benefits of aerification. I have seen field managers use the aerify-then-roll sequence to get vehicle ruts out of fields. This sequence is very effective to remove the larger ruts, rolls, and dips. For more minor surface disruptions that may reduce field playability or if you have somewhat loose surface soil conditions, roll-then-aerify may be the better sequence.

If you have significant surface unevenness, you should also consider a sand topdressing and dragging program. Rolling alone should not be used to remove large lips and dips. If you are trying to remove large surface disruptions, you are probably relying on an excessively heavy roller. I would avoid using the roller on wet soils and during periods of time the turf is highly stressed. Develop an aerification program to address your hardness and infiltration issue that complements your rolling practices. Try to use topdressing and dragging for leveling the surface. Like most good things that can be bad for you in large quantities, practice rolling with moderation. And never feel bad for considering player safety when developing your maintenance practices. ■