

Unfortunately, when just before the conference Doc was admitted to the hospital because of heart problems, he was diagnosed with stage four cancers that had spread into several parts of his body.

I was very lucky to get to speak with Doc and his son over the last 6 weeks of his life, and I got the chance to tell him how important he was to me and thank him for being a good friend and a mentor.

The week before his passing, he had to go back into the hospital briefly but returned home to witness the marriage of his daughter to Steve Ford; it was a proud day for Doc. He called me that night and said, "My little girl is married, I can rest now and let go." I believe that was his way of saying goodbye to me, to let me know it would be the last time we spoke.

We laughed about the memories of our good friend Harry "Gramps" Gill and Dr. Bill Daniel and his friend Dr. Henry Indyk, and the good times we had. We laughed about putting my young daughters to work in our basement binding our first membership directory.

I also remember a time shortly after I met Doc, I was working for the Northbrook Park District in Illinois. I was in charge of grounds maintenance for our parks and golf course. My phone rang one early evening and it was the good doctor. "Schiller, it's Kurtz, what the hell are you doing to my Uncle Gene? Trying to kill the old guy?"

I asked what he meant, and he said his uncle was on our course and he had been hit in the head with a golf ball. I did some checking and came to find out that Gene Worthington had been quite a good golfer in his early years and was still one of the best instructors around back then. Uncle Gene was Doc's mom's brother and was working on our grounds crew as well as instructing to supplement his retirement income. He had been working with one of our crewmembers fixing an irrigation problem. Gene had a hard hat on, heard the infamous cry of "FORE" saw the ball coming at him, but the reflexes did not let him get out of the way in time.

He was out like a light, trip to the hospital for a check up and he was good as new. However, it was all my fault as far as Doc was concerned. I should have known the ball was going to hit Uncle Gene and not have let him out there. Uncle Gene loved being on the course, and even as a senior was still quite strong and he did a good job for us.

I reminded Doc of the old shoes he always wore to our house; they were a pair of look-like alligator style shoes that my kids called "toad shoes", so of course Kent was always Doctor Toad Shoes! Years ago I got a package from Kent, and it was those old shoes. My wife had kept them and so I gave them back to Doc the day of his funeral.

There were a lot of good times with Doc and some tough times as STMA grew, but always his faith and friendships stayed strong. You could call him for a straight and direct answer, if he didn't know, he'd tell you so, but a few days later call you back with information he had gathered.

continued on page 43



THE SOURCE

for standard guideline documents

to assist in the selection and use

of synthetic turf systems

THE SOURCE

for obtaining unbiased and non-

proprietary information that promotes

the matching of product performance to

the needs of the user

THE SOURCE

for identifying certified providers who

strive to uphold industry standards

The Synthetic Turf Council is a non-profit association of companies who represent 85% of the synthetic turf industry. The STC membership is comprised of professional designers, landscape architects, engineers, manufacturers, builders, testing laboratories, suppliers, installation and maintenance specialists who are committed to end-user satisfaction. Tel 706.270.6699; Fax 706.278.9899

www.syntheticurf.org

SYNTHETIC TURF...
The Preferred Playing Surface

STMA "pot of gold" for Andresen

Mike Andresen, CSFM, is Iowa State University's athletic turf manager and president-elect of the Sports Turf Managers Association (STMA). Here, as STMA celebrates its 25th Anniversary in 2006, Andresen comments on how his involvement with the association has affected his career and life:

ST: When and how did you get involved with the STMA?

Andresen: I was initially introduced to STMA locally by Gary Peterson, now-retired extension specialist from Iowa State, who befriended me shortly after I took the head groundskeeper position with the Iowa Cubs baseball team.

I had worked in landscape and turf management but knew nothing about managing a high level baseball field other than being one of those disinterested college pitchers that the coach put in charge of our home field clay areas. Gary impressed on me that STMA locally and nationally was where I would find people who'd take time to talk "shop" with me.

Jesse Cuevas from Rosenblatt Stadium really embraced me and I harvested so much expertise from his experiences that I'm almost ashamed today for doing it! I think Jesse started getting worn out with my calls and he turned me on to Steve Wightman and others. To think I had managers like these willing to help a young person succeed was a powerful statement about this association.

At this point I started regularly attending national conferences and so Gary insisted that I had a responsibility to use my position at the I-Cubs to help spread the STMA message in Iowa. Without the encouragement of those mentors early on I would have sunk.

ST: What have been the most valuable things you've come by from your membership?

Andresen: STMA was, and still is, a pot of gold for me. The closer I looked and the more



I dug into it, the richer I got. I can never properly thank those who have and still do take time to enrich me, but I have made a promise to take every opportunity to follow their model, and the STMA model really, to cultivate the passion throughout our industry.

Successful people in our profession are successful because we're passionate about the impact we have on the kids who use our fields. I've learned we provide users with not only game experiences but life experiences. Many kids' dreams involve them doing great things on fields we maintain and it's exciting and truly an honor to play a small role in watching kids live out honest-to-goodness "dreams."

I was one of those kids who dreamed of throwing the final strike in Game 7 of a World Series, a dream always played out on an emerald green field with brilliantly white chalked lines and a perfectly shaped mound. I realize now there's a big difference between a field and a ballpark.

Quality performance from turf managers relates to how successfully we apply textures to our work. STMA exposes to us the textures that we use to enrich the lives of those who compete on our fields. None of us use the textures in the same way but we all draw

upon them to develop our own unique and special product. Every day we get to roll out our product so kids can fulfill more dreams. That's how special our jobs are! That's how special STMA's role is in people's lives. We know it because we're inside it but most people that benefit from what STMA really offers to sports don't know it.

ST: Tell us how else your STMA experience is relevant to your life.

Andresen: Now when I get together with STMA friends, at conference, through chapter functions, or over the phone, the discussion is rarely centered around an agronomic problem. There's a real care and concern for health and happiness exchanged first then a thread of "what did you do for this" or "what do you think about this" takes shape.

Few of those friends are surprised by any questions I've ever had and have generally "been there, done that," which provides great comfort. It's almost as if I can borrow their experience, helping me look smarter to my employer than I really am. There are so many circles of friends and such a complex networking system that goes on within STMA that it's rare to have a truly unique problem come up.

We have no problems showing others our battle earned scars and encouraging others alternative ways of dealing with a similar challenge. I treasure the wisdom in our membership and I love hearing the great stories behind each of the battle scars!

On one hand it validates that misery loves company but it's also a constant reminder that this profession has no room for egos because it can be very humbling at times, and is made up of very special people. Not because of what we do but because of who we are and the impact we have on those around us. Being a sports turf manager without being a member of the Sports Turf Managers Association wouldn't be nearly as gratifying. ■

IN MEMORIAM

continued from page 41

He was a true influence on the turf industry, having taught thousands of young people, bringing them into the profession. He was a great delegator! He would call and it was always that same old gruff voice at the other end: "Schiller, Kurtz here and we need to . . ."

First off I can never ever remember him calling anyone by their first name, and most importantly if he said, "We have to" it usually meant you were going to have to do something to keep things moving along. I never minded no matter how many times he got me.

The ultimate "delegation" now goes to Marilyn, Todd, and Heather, as they have to go through all the boxes of stuff, pictures, paraphernalia that Doc had accumulated over all his years in the business.

Doc was all I have mentioned and as his friend George Toma always says, "And then some."

Of Kent Kurtz, Toma said, "I always thought of Doc as one of the founders. He was just a little behind those of us who started STMA, but to me Doc will always be a founder of STMA."

Jim Prusa, former GSCAA administrator, said, "I have lost a true friend who helped him through many tough times."

Amy Fouty, CSFM, and Abby McNeal, CSFM, both said they will miss the warmth and welcome Doc always gave them, and how he always expressed his happiness that so many young ladies were making their mark in the profession.

I am sure glad my path crossed with Doc's. I know I am a better person and better professional for having the chance to know and work with him so often.

Doctor Kurtz was laid to rest beside Trish, on Saturday February 25th, following a beautiful celebration of his life in the Calvary United Methodist Church of Davis, Rev. Randall Shepard led a service that connected Kent back to his roots in Illinois and celebrated his life among friends, family and colleagues.

Mike Schiller, CSFM, is a former president of STMA, former chairman of the SAFE Foundation, and grounds manager at Lake Forest Academy, Lake Forest, IL. ■

AerWay®

AerWay® delivers Speed

AerWay® can aerate the typical playing field in less than 30 minutes, without taking it out of play. More frequent aeration treatments reduce compaction, speeds drying of the field when it rains, and makes more efficient use of water when it's dry.



for more information call **1-800-457-8310**

Advanced Aeration Systems

www.aerway.com email: aerway@aerway.com

Fill in 135 on reader service form or visit www.oners.ims.ca/5906-135

These guys are in good enough shape to play for hours. Is your turf?

If you're not using **Princess 77**, you might want to give us a call before your playing field turns into dirt.

Known for its rapid establishment from seed, deep green color, the fineness of the blades, ability to handle high traffic areas (like a soccer field), **Princess 77** has a faster recovery time and uses less water than 419.

Princess 77.

Only from Pennington Seed.
Available at your licensed seed or sod supplier.



PRINCESS
Certified Hybrid Bermudagrass
Cute Name. Tough Grass.

For info, e-mail: sportturf@penningtonseed.com, call 1-800-286-6100 ext. 280 or visit: www.penningtonseed.com

Fill in 136 on reader service form or visit www.oners.ims.ca/5906-136

Bylaws Committee Recommends Changes

The STMA Bylaws Committee has been reviewing and realigning the bylaws, primarily to adjust the language regarding membership categories. They have completed their work on the "categories" portion of the Bylaws and have provided their recommendations to the STMA Board of Directors.

During the spring and summer of 2005, the Membership Committee addressed the existing membership categories and created new categories of membership to help grow the association and advance the profession. The Board approved the category revisions during their summer 2005 board meeting, and subsequently engaged the Bylaws Committee to align the bylaws with these revisions.

There are three major changes to the membership categories in the Bylaws.

No matter who your employer is –
if you do the work of a sports turf manager – you will be in the category
of Sports Turf Manager.

First, the sports turf manager category has been clearly defined so that it does not matter who your employer is – if you do the work of a sports turf manager – you will be in the category of Sports Turf Manager. That was not very clear previously. The category representation, i.e., what type of facility you work for, has been removed from the requirements for membership. However, it is still very important for board service and has been defined very clearly under Board representation. There have been no changes to the Bylaws in the required Category Representation on the board, except for some descriptive language, which is noted below.

Second, multiple sports turf manager members from the same facility will pay lower dues. The first sports turf manager from the facility will pay full dues; other sports turf managers will have the same voting rights and privileges, but will pay a discounted rate. This member will be categorized as a Sports Turf Manager Associate. This will help the budgets of those facilities that support the association with multiple members.

Third, STMA has added a new category so that those who work on sports fields, but **not** as their primary profession, such as a coach, a volunteer, an athletic director, can join the STMA and learn from its members. This category will pay lower dues and be known as an **Affiliate** member and will **not** be eligible to vote.

All of these changes will be presented to the membership during the next several months. The STMA membership will have the opportunity to vote on these changes during the annual election process. ■

KORO
BRILLIANT INNOVATION
BUILT "SPORT" TOUGH

TOPORAIN - Slit drainage made easy
• Three (3) sand filled trenches, 1.5" w x 8" d at 20" oc.

SALES & CONTRACT SERVICES

RECYCLING DRESSER - aerate 7" deep
• Topdress your own root zone in one pass, no more plugs!

NEW! VERTICUT REEL AVAILABLE

FIELD TOPMAKER - strip turf, mulch & load in one pass

Dealership opportunities

North American Distributor
GreenONE Industries 888-KOROUS (567-6872)
www.korosystems.com

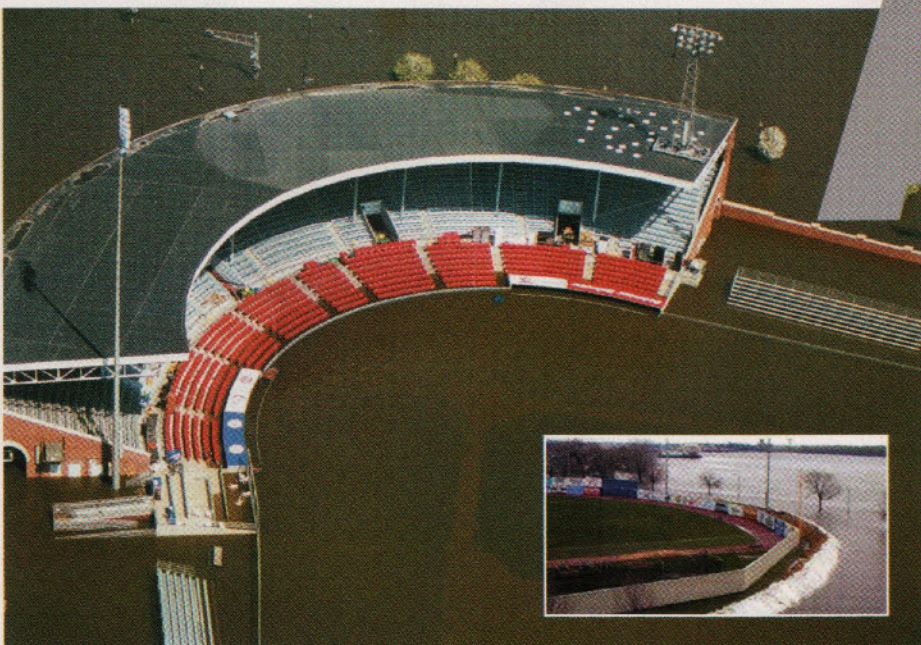
REVOLUTIONIZING THE SPORTS TURF INDUSTRY

Fill in 138 on reader service form or visit www.oners.ims.ca/5906-138

PREVIOUS LANGUAGE	NEW LANGUAGE
Professional Sports Turf Facilities Managers	Person who manages sports fields used by professional athletes.
College and University Sports Turf Facility Manager	Higher education ...who manages sports fields for institutions that provide education beyond the secondary level.
Parks and Recreation Sports Turf Facility Manager	Parks and Recreation ...who manages sports fields for parks and recreational facility, municipality, city, or other non-profit entity.
Other Schools Sports Turf Facility Manager	K-12 ...who manages sports fields for institutions that provide education to students in grades kindergarten through 12.
Research, Teaching, Extension Personnel	Academic
Commercial	Commercial (includes consultants, architects, designers, contractors, management companies, distributors and manufacturers, etc.) Company engaged in a commercial enterprise providing services and/or products to the sports turf profession.
Commercial Affiliate	Commercial Associate

John Mascaro's Photo Quiz

Answer: from page 19



Photos courtesy of the Iowa Corps of Engineers.

If you would like to submit a photograph for John Mascaro's Photo Quiz please send it to John Mascaro, 3669 NW 124th Avenue, Coral Springs, FL 33065 or email to john@turf-tec.com. If your photograph is selected, you will receive full credit. All photos submitted will become property of SportsTurf magazine.

The wet turf is a result of the Mississippi River flood of 2001. John O'Donnell Stadium is one of the most scenic ballparks in the country, located right next to the Mississippi River in Davenport, IA. However, with the beauty of the river also comes the real danger of flooding. The stadium has been flooded quite a few times since its construction in 1931 with the most recent flooding occurring in 1965, 1993 and 2001. These latest photos are from 2001 when the city built a sandbag wall totally encircling the stadium (see inset photo); however the river overtook the sandbags as it crested. In 2004, there were many improvements made to the facility including a new concourse, clubhouses, food service site, seating and picnic areas. The innovative plan also included an earthen berm that encircles the entire outfield offering flood protection as well as creating a grassy, park-like seating area. ■

Shop Our...

 **Green
Media Online**
The green industry portal for information, education & products.
BOOKSTORE

[www.thebook-store.com/
greenmedia](http://www.thebook-store.com/greenmedia)

**Shop Thousands of
Green Industry
Titles**

Deep Discounts on New Releases
Bestsellers, Bargain Buys and
Much More!

THE GAME MUST GO ON.

An Airfield is the ultimate sports turf drainage system whether you are playing on natural or artificial turf.

Artificial Turf Benefits:

- Drains remarkably faster
- Reduces installation time
- Reduces G-Max
- Eliminates rubber migration
- Eliminates standing water
- Strong enough for vehicles
- Below entire playing surface
- Air void for heating and cooling
- Allows flushing and sanitizing
- Maintains level playing surface

Natural Turf Benefits:

- Drains remarkably faster
- Reduces installation time
- Reduces irrigation requirements
- Extends playing season
- Eliminates standing water
- Reduces maintenance costs
- Below entire playing surface
- Superior perched water table
- Greater root mass
- Gas circulation through soil



405.359.3775
airfieldsystems.com

Fill in 137 on reader service form or visit www.oners.ims.ca/5906-137

Sports Turf Managers Association of Arizona: For information on the Chapter or upcoming events, contact Darin Budak, CSFM at e-mail: dbudak@goodyearaz.gov or call 623/882-7616 or David Oropeza, at e-mail: doropeza@cityofnogalez.net or 520/285-5781.

Chesapeake Chapter STMA (formerly called Mid-Atlantic Athletic Field Managers Organization - MAFMO Chapter STMA): For information on the Chesapeake Chapter, contact Graham Davis at gdavis@american.edu or call 301/495-5522.

Colorado Sports Turf Managers Association: The Colorado chapter has completed its 2006 elections. The new Board members are President - Ken Norkosky, Vice-President - Hod Soto, Sec./Treasurer - Jim Anderson, the new Directors are Dave Allgood and Jerry Solt, and the new commercial rep. is Jay McQuade. The CSTMA spring workshop will be in early to mid-April. Please keep an eye on the CSTMA website for updated information. For more information about CSTMA visit our website at www.cstma.org or call the Chapter Hotline at 303/346-8954 or President Ken Norkosky

at 720/427-4174, or email knorkosk@auroragov.org.

Florida #1 Chapter: The next Florida #1 chapter meeting will be held on May 16th. There will be a bus tour and will go to Dolphin Stadium, Calder Race Course and Florida Atlantic University. For information on the Florida #1 Chapter or upcoming events, visit the Florida #1 Chapter page on STMA's website or contact John Mascaro at 954/341-3115 or STMA@turf-tec.com.

Gateway Chapter Sports Turf Managers Association: For information on upcoming events or on the Gateway Chapter, contact Mark Vessell, St. Louis Youth Soccer Association at 636/940-7776 or e-mail vessel@slysa.org or Frank Schaffer, Lutheran High School at 636/940-7776.

Georgia Sports Turf Managers Association: For information on the Chapter or upcoming events, contact Skip Kirby at 770/928-1580 or by e-mail at skip@sportsturfmanagement.com.

The Greater L.A. Basin Chapter of the Sports Turf Managers



This month's Field of the Year winner gets a topdressing

Chapter Sponsors



Hunter
The Irrigation Innovators



Alpine Services, Inc.
Premium Athletic Fields... For All Sports

syngenta

Association: For more information on the Chapter or upcoming events call Carol Gundlach, CSFM at 909/594-5611 ext. 5174 or e-mail cgundlach@mtsac.edu.

Illinois Chapter (formerly Midwest Chapter) STMA: The Illinois chapter's Spring start-up workshop is scheduled for April 19th at Gurnee Park District. For information on the Illinois Chapter or upcoming events call chapter secretary Libby Baker at 847/263-7603 or e-mail Bake60ft6in@aol.com.

Iowa Sports Turf Managers Association: For information on the Chapter or upcoming activities visit www.iowaturfgrass.org or contact Jeff Wendel, CGCS of The Turf Office at 515/232-8222 or fax 515/232-8228 or e-mail Jeff@iowaturfgrass.org.

Keystone Athletic Field Managers Organization (KAFMO/STMA): The Keystone Athletic Field Managers Organization (KAFMO) presented the 2006 Fowler Founders Award to Jim Welshans at the 10th Annual Athletic Field Conference on February 17, 2006. Fowler Founders Award recipients are chosen by the KAFMO Board of Directors to honor individuals for their dedication not only to KAFMO, but also for doing their part in mak-

ing a difference in the sports turf industry of Pennsylvania. The Fowler Founders Award is named in honor of Donald Fowler, retired Penn State Extension Agent, who is credited with organizing the group of individuals who formed KAFMO in 1994. For information on the Pennsylvania chapter or upcoming events, visit the new chapter website at www.kafmo.org, or contact Dan Douglas, Reading Phillies Baseball Club at 610/375-8469, ext. 212 or by e-mail to kafmo@aol.com.

Kentucky Sports Turf Managers Association: For information on the Chapter or upcoming events, go to www.kystma.org or contact Donnie Mefford at dbmeff00@email.uky.edu or call 859/257-1451.

Michigan Sports Turf Managers Association (MiSTMA): For information on the Michigan Chapter, visit their website at www.mistma.org or contact Chad Follis at 269/377-3340 or 269/381-0596 or by email at chadfollis@farmngarden.com.

Minnesota Chapter STMA: For information on the Minnesota Chapter, or upcoming events, visit the Chapter website at www.mstma.org or contact chapter President Tom Adamini at

952/953-2420 or by e-mail at tadamini@ci.apple-valley.mn.us.

MO-KAN Sports Turf Managers

Association: The Mo-KAN chapter is pleased to announce our new website at www.mokanstma.com. Check it out for information on upcoming events, membership, helpful links, etc. For more information on the MO-KAN Chapter or upcoming events, contact Jody Gill at 913/239-4121 or by e-mail at jgill@bluevalleyk12.org.

New England STMA (NESTMA):

The New England chapter's website was rolled out at the New England Regional Turfgrass Conference and Show. Please check it out at www.nestma.org. The NESTMA Spring Workshop will be at Filippello Park in Watertown, MA on Wednesday, May 3rd from 8:00 am - Noon. Frank Cerrati will talk about his sand-based soccer/softball field and discuss design, maintenance problems, current maintenance practices and use. For information on the New England chapter or upcoming events, contact David Pinsonneault at 781/861-2757 or e-mail dpinson@ci.lexington.ma.us or Nick Caggiano at 603/589-3370 or e-mail caggianon@ci.nashua.nh.us.

Nebraska Sports Turf Managers

Association: For information on the Nebraska Chapter or upcoming events, contact Jennifer Roeber at 402/441-4425 or by e-mail at jenr@saltdogs.com.

Sports Turf Managers of New

York: For information on the New York Chapter or upcoming events, visit the chapter website at www.stmony.org, or contact Mike Albino at 315/468-6225 or (c) 315/427-1214 or mikealbino@earthlink.net.

or Kevin Meredith at 607/287-6609 or kimeredith@earthlink.net.

Sports Field Managers Association of New Jersey:

The SFMANJ is having its annual Spring Field Day on Thursday, April 13, 2006. Registration begins at 7:30 am at Shore Regional High School in West Long Branch, NJ. Morning education begins at 8:00 am. Lunch is included and will be held at Monmouth Park Racetrack in Oceanport, NJ. Afternoon education at the Monmouth Park Racetrack is scheduled for 1:00-3:00 pm. Cost for SFMANJ members is \$25 and non-members is \$40. For information on the New Jersey Chapter or upcoming events call SFMANJ at 908/730-7770, e-mail HQ@sfmanj.org or visit the Chapter website at www.sfmanj.org.

Ohio Sports Turf Managers Association (OSTMA):

On April 18th, join the Ohio Sports Turf Managers Association for our 2006 Spring Field day at the Dayton Dragons! Get the dirt on infield management and pick up some ODA credits too. There will be two ODA credited talks and several hands-on opportunities. This will be a great day to learn some new tricks for the spring sports season. For information on the Ohio Chapter or this event, you can check our website at www.ostma.org, email us at ostma@aol.com or call us at 614/354-1196.

Pacific Northwest Sports Turf Managers Association:

For information on the Chapter or upcoming events, contact Matt Johns at 253/445-4538 or mjohns@puyallup.wsu.edu.

Southern California Chapter: The SoCal Chapter's 2nd annual Pesticide for Sports Turf Professionals seminar will be held May 5, 2006 at Lake Poway from 7 am - Noon. Four hours of continuing education will be offered. Cost for SoCal chapter members is \$35 and \$50 for non-members. For more information contact Mike at 858/679-2526 or MTarantino@powayusd.com.

South Carolina Chapter of STMA:

In 2005 there were 3 FOY awards in SC this year, they were; Softball FOY - University of South Carolina-Upstate, Bruce Suddeth, Robert Easler, and Ben Williams; High School FOY - Hillcrest High School, David Brooks; and Sports Field Complex FOY - St. Andrews Parks and Recreation, Patrick Jonas. Hillcrest High School and David Brooks also won the STMA National High School Baseball FOY for 2005. The 2006 SCSTMA officers are: President - Bruce Suddeth, University of South Carolina-Upstate, President-Elect - Clark Cox, University of South Carolina, Past President - Alan Wilson, CSFM, Wilson & Associates, Vice-President - BJ Haurert, Modern Turf, Inc., and Secretary/Treasurer - Mike Burgess, Smith Turf and Irrigation. For information on the South Carolina Chapter or upcoming events contact Bruce Suddeth at 864/503-5514 or by e-mail at bsuddeth@uscupstate.edu for more information or visit our website at www.scstma.org.

Texas Sports Turf Managers

Association: For information on the Texas Chapter contact T. J. Thompson, President-Elect at txturfmanager@1scom.net or 972/670-2138 (m).

Tennessee Valley Sports Turf Managers Association (TVSTMA): For information on the Chapter or upcoming events, call Chapter President, Al Ray at 931/388-0303 or by e-mail at ARay@maurycounty-tn.gov.

Virginia Sports Turf Managers

Association: The VSTMA Annual Field Days will be held June 13-14, 2006 at Woodberry Forest School. June 13 will include a Scholarship Fund Golf Tournament, an educative Workshop and the Tailgate Reception. June 14 will be the Field Day proper with lectures and demonstrations. For information on the Virginia Chapter or upcoming events, please contact VSTMA President Bob Studholme of the Fairfax County Park Authority at 703/324-8590 or robert.studholme@fairfaxcounty.gov.

Wisconsin Sports Turf Managers

Association: For information on the Wisconsin Chapter or other pending events, contact Chris Brindley at 715/346-3622 or cbrindle@uwsp.edu.

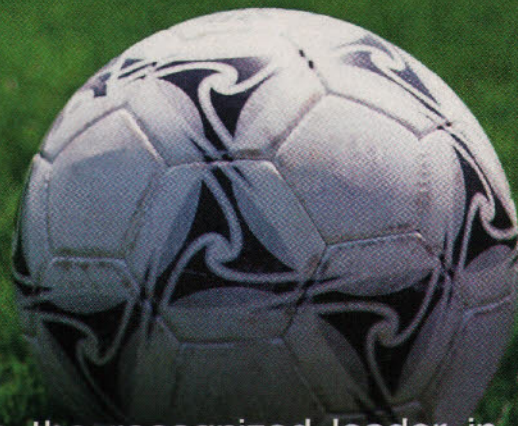
FORMING CHAPTERS:

North Florida STMA Chapter: For information on the newly forming North Florida Chapter, contact Mark Clay at 904/633-6116 or Jay McCord at 904/448-2583.

Idaho STMA: For information, contact Greg Liggett, at 208/496-2421 or email him at liggett@byu.i.edu.

Nevada STMA Chapter: For information, contact Corey Angelo at 702/433-3113 or by e-mail at sls654ASCM@lesco.com. ■

Invest in your future Join **STMA** today.



The Sports Turf Managers Association (STMA) is the recognized leader in championing the sports turf industry and its professionals. STMA members combine the science of growing turfgrasses and the art of maintaining fields to produce safe and aesthetically pleasing playing surfaces.

The three most important reasons for you to join STMA:

1. Job security

Take advantage of STMA's programs and services, and you proactively enhance your value to your employer.

2. Career success

The knowledge, skills and abilities you gain by accessing STMA's education and information can help you to prepare to take that next step in your career.

3. Recognition of your professionalism

STMA's advocacy with groups such as athletic directors, parks and recreation directors, coaches, and parents enhances the image of the entire profession.

The top three benefits you will receive as an STMA member:

1. A network of peers who are willing to share their best practices.
2. Opportunities for education to help you do your job better.
3. Quick access to information and resources to help you save time.

Application

Name _____

Title _____

Employer _____

Address _____

City _____ State _____ Zip _____

Phone _____ Fax _____

e-mail _____

Signature _____

Membership Category

___ Sports Turf Manager \$95

Please note the primary type of facility

___ Facility used by Professional athletes

___ College/University

___ Schools K-12

___ Parks & Rec

___ Commercial Company \$295

___ Additional Member from same company \$ 75

___ Student (with valid i.d.) \$ 20

___ Research/Teaching/Extension \$ 95

Chapter Dues (Call Headquarters for amount) \$ _____

Chapter Name _____

Contribution to SAFE Foundation for research, education and scholarship \$ _____

Total \$ _____

Payment Method (U.S. dollars)

___ Check ___ Money Order ___ Purchase Order # _____

___ Credit Card ___ Mastercard ___ Visa ___ American Express ___ Discover

Name on Card _____

Card # _____ Exp. Date _____

Signature _____

Cut
Here
to
Fax
or
Mail



SportsTurf

MANAGERS ASSOCIATION

Experts on the Field, Partners in the Game.

Sports Turf Managers Association
P.O. Box 414029, Kansas City, MO 64141

Ph. 800-323-3875 (785) 843-2549 fax: (785) 843-2977

www.sportsturfmanager.org email: STMAinfo@sportsturfmanager.org

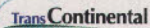
To Sprig or To Seed? That is the question.



The newest elite turf-type featuring finer leaf texture, improved turf density, and significantly improved turf quality. With excellent tolerance to winter survival and reduced scalping, Sunbird is second only to Riviera in performance.



Developed by Pure Seed Testing in North Carolina, Savannah forms a dark green, low-growing turf with excellent turf quality and early spring green-up. Ideal for new turf installations.



Transcontinental represents a new generation of improved turf quality, color, and performance. With improved cold tolerance for winter survival, Transcontinental allows for quality bermudagrass performance in both hot, humid conditions and cooler, temperate climates.



TURF-SEED, INC.

Your Success Depends on Seed / Satisfaction Guaranteed.

800-247-6910 • www.turf-seed.com
email: info@turf-seed.com • fax: 503-651-2351

Fill in 165 on reader service form or visit www.oners.ims.ca/5906-165

CL185 CONE LASER



Easily adjustable head makes dialing in your desired cone quick and easy.



Excellent for use with a rod mounted receiver or machine control applications. With an adjustable range of flat to -1.85%, this laser is a sports field contractors most valuable tool.



"Over 20 years of experience in the sports field industry."

1-800-972-5273
LASERFORCE.LLC.COM

Fill in 159 on reader service form or visit www.oners.ims.ca/5906-159

GBS 1200 VERTICUTTER



belt driven both sides

graden usa inc
7309 capehart road
richmond, va 23294
ph: 804 249 9950
fx: 804 249 9951

offset mounting

48" cutting width

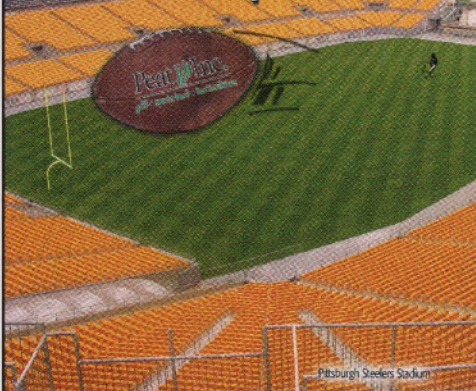
em: michael@gradenusa.com

CALL FOR YOUR FREE DEMO!

GRADEN
www.gradenusa.com

Fill in 160 on reader service form or visit www.oners.ims.ca/5906-160

Peat, Inc. for today's high-performance and sand-based sports fields.



"A little Peat Inc.
goes a long way!"

Peat Inc.

golf • sports turf • horticulture

Organics You Can Trust

A Minnesota-based peat company servicing worldwide.

Peat, Inc. • Elk River, MN 55330
www.peatinc.com
1-800-441-1880 or 763-441-8387

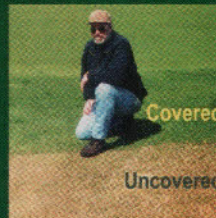
Fill in 164 on reader service form or visit www.oners.ims.ca/5906-164

Supreme-Green™ Turf Growth Cover

Supreme-Green is a multi-purpose turf growth cover made of a specially designed material to provide early green-up, accelerated germination and winter protection. The Supreme-Green cover encourages root development and rapid growth while extending your spring and fall seasons.

Supreme-Green turf growth cover is specifically engineered to promote earlier openings by 2-3 weeks.

- Reduces seed loss
- Promotes earlier root establishment
- Accelerates Germination
- Reduces frost and ice-damage
- Porous to allow water and air circulation
- Mildew and rot resistant
- Quick turf repairs



Specifications:

- Made of tough woven non-coated polyethylene material
- UV treated for long life
- Green tint for best heat build-up
- One piece construction
- Comes complete with anchor pegs and storage bag

279 Humberline Dr. Etobicoke, Ontario M9W 5T6

Phone: 1-800-837-8961

Fax: (416) 798-1342

E-mail: sales@covertechfab.com

Website: www.covertechfab.com



Fill in 162 on reader service form or visit www.oners.ims.ca/5906-162



Durability, Power, and Comfort Shindaiwa trimmers, designed and built with the landscape professional in mind

- Quality two-ring piston and chrome plated cylinder for maximum durability
- Solid steel drive shaft
- Electronic ignition for fast, easy starts
- Anti-vibration system reduces operator fatigue
- Heavy-duty gearcase design
- Lifetime warranty on drive shaft and electronic components

shindaiwa

FIRST TO START. LAST TO QUIT.

To find a dealer nearest you, call (800) 521-7733, or visit www.shindaiwa.com

Fill in 161 on reader service form or visit www.oners.ims.ca/5906-161

MARKETPLACE

THIS IS WHERE
YOU FIND QUALITY.
(IT'S ALSO WHERE YOU FIND BEACON.)



INTRODUCING THE BEACON PRO SERIES

Professional-grade products
for superior performance



FIELD MAINTENANCE & TRAINING EQUIPMENT
800-747-5985 www.BeaconAthletics.com

Fill in 157 on reader service form or visit www.oners.ims.ca/5906-157

LINE UP

Hash-Mark Painting System

Made of lightweight aluminum & FOLDABLE.
Self-aligning, 5 yard units.



Alumanumber

4x6 in size, made of 1/8" aluminum
Offsets built-in for quick alignment
Three font types available

The Only Painting System
You'll Ever Need.

888-780-4441

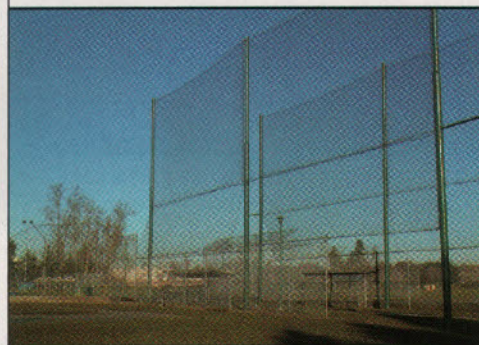


Diversified Sports Specialties
www.DSSworks.com

Fill in 158 on reader service form or visit www.oners.ims.ca/5906-158

NETEX

NETEX CANADA NETTING INC.



Canada's #1 sport netting supplier

BASEBALL BARRIER NETTING

BASEBALL CAGES

FREE STANDING STEEL POLES

DESIGN AND ENGINEERING

GOLF HOCKEY SOCCER

Sport Netting Experts

1-800-936-6388 m.wilson@dccnet.com

Fill in 156 on reader service form or visit www.oners.ims.ca/5906-156

PLAN FOR A WINNING SEASON



Stabilizer Solutions, Inc.
33 South 28 Street
Phoenix, Arizona 85034 USA
info@StabilizerSolutions.com

800-336-2468
tel 602-225-5900
fax 602-225-5902
www.stabilizersolutions.com

Fill in 153 on reader service form or visit www.oners.ims.ca/5906-153

TriWave

60 OVERSEEDER



The next wave in overseeding is here!

The patent-pending TriWave™ 60 overseeder is perfect for rejuvenating heavily-used sports fields – allowing ongoing overseeding with minimal disruption to play. Here's how:

- Three independent floating heads seed both low and high spots.
- WaveBlade™ technology optimizes slit width for improved seed-to-soil contact with minimal turf disruption.
- Special seed delivery system puts seed directly into slit, increasing germination with reduced waste.
- Infinite depth adjustment allows tools-free in-field adjustments.
- 1-1/2" blade spacing increases germination with fewer passes.



Experience the TriWave difference.
Call Turfco at 800-679-8201 today!

Turfco Manufacturing • 1655 101st Avenue NE • Minneapolis, MN 55449-4420 U.S.A.
Tel (763) 785-1000 • Fax (763) 785-0556 • www.turfco.com



Fill in 154 on reader service form or visit www.oners.ims.ca/5906-154

REEL ROLLERS

A Revolutionary New Attachment
for Reel Type Lawn Mowers



- Adds weight to the front of the mower
- Creates stripe effect on lawns
- Rides to the highest contour of the yard
- Bolts up with original mower hardware
- Height adjustment & level of height is same as the original caster wheels



We Have Roller Kits For
20", 25", 27" Tru Cut Reel Mowers
20", 25" Trimmer Reel Mowers
20", 25" McLane Reel Mowers

Get the Reel Roller Advantage Today!

770-867-5442 or reelrollers@alltel.net

www.reelrollers.com

Manufactured and marketed by Reel Works in Winder Georgia

Fill in 155 on reader service form or visit www.oners.ims.ca/5906-155