



Synthetic Turf Groomer with GreensSlicer® Spring Tine Rake.

**Fast, Efficient Grooming
of all filled synthetic
sports fields!**



FEATURES and BENEFITS

- Synthetic Sports Turf Groomer works with all fill material currently used, in both wet and dry conditions.
- Patented brush design lifts turf fibers leaving them in a plush, upright position. Brushes move fill to low spots or depressions left after play.
- Synthetic Super Duty Blue Brushes retain their original shape, resist wear, and will not rot.
- GreensSlicer Spring Tine Rake consists of 3 rows of 28 tines spaced 7/8 inch apart for thorough coverage.
- Each row of tines may be adjusted to the desired level of aggressiveness.
- The GreensSlicer combs through the fill material, relieving compaction and assuring a soft, level playing surface.



Synthetic Super Duty Blue Brushes
Resist wear and will not deteriorate from moisture.



GreensSlicer Spring Tine Rake
3 rows of 28 tines.



**Call for additional information on our line of Synthetic Turf,
Natural Turf, and Clay surface Groomers**

888-298-8852 Fax 317-298-8852

www.greensgroomer.com

GreensGroomer WorldWide, Inc., Indianapolis, IN

Copyright © 2004 GreensGroomer WorldWide, Inc. All rights reserved.
U.S. Patents 5833013, 6655469. Other Patents Pending.

Circle 145 on card or
www.oners.ims.ca/5063-145



SportsTurf
MANAGERS ASSOCIATION

Experts on the Field, Partners in the Game.

illuminated with Musco lighting equipment.

The field is maintained year-round at a cutting height of 5/8-inch with a National tri-plex mower. The low growth bluegrasses are on a growth regulator program throughout the growing season. The monthly fertility program calls for approximately .85 lbs. to 1 lb. of N / monthly /m of granular fertilizers, supplemented with bi-weekly applications of foliar products with micronutrients. The annual nutrient target for this sand-based field is approximately 6 lbs. of nitrogen, 2.5 lbs. of phosphorous, and 5.2 lbs. of potassium /m / year. The field is annually aerated with 5/8-inch hollow core tines and topdress it bi-monthly. Weed control for broadleaf weeds are done on an alternating year basis while, pre-emergent applications are on an annual program. Insect and disease problems have been relatively non-existent on the field and monitoring for all problems continues on daily.



Build it and they will use it

The field opened for play and practice during the spring of 2003 for the both the girls' and the boys' programs. These programs begin in mid-March and run through the first weeks of June. During this period, the field is normally utilized six days per week.

Throughout the season field setups are shifted monthly to move the high traffic areas out of play to keep the quality of playing conditions consistent. Area coaches, athletes, visitors, and game officials have all remarked about the quality and playability of the field. Game officials have also reported how much less fatigued they feel after officiating games.

John Netwal says, "We have also become our own researchers by conducting a variety of trials and studies on our sports fields. We are currently studying the effects of growth regulators on the soccer field as well as our other sports turf areas. This trial has justified the use of these products and has proven that they belong in our management programs.

"We have also undertaken another project this year in which we are studying the actual maintenance cost of all of our sport fields (see page XX). We began this study to better understand the maintenance cost of our new soccer field and how it compares to the input requirements of our native soil sports fields," says Netwal. "We currently tracking our labor, supplies, materials and utility cost inputs, necessary to produce the turf conditions we desire on each field type. Our interest is to shed some light on the actual maintenance cost of our new sand-based sport field. We are also interested in comparing our findings with those suggested by the sales staff and manufacturers of the next generation of artificial sport field systems. It is our hope that through our efforts we will be able to fairly evaluate the pros and cons of each type of these modern sports field systems."

In addition to this work, Netwal is participating with Iowa State University in a 2-year study to evaluate the integrated pest management practices for schools. This study, sponsored by the EPA, is a 2-year commitment to determine threshold limits and IPM strategies for school systems. **ST**

Problems with drainage?
 Increase Safety, Playability, and Wear Tolerance of Turf with...
QwikDRAIN SYSTEMS

- Increase aeration and drainage with a narrow slot "trench-'n-fill" system at 20" o.c.
- Minimal surface disruption
- Fast, clean, cost effective operation

For a Certified Contractor Nearest You, Call Toll Free
1-888-567-6872
 Division of GreenONE Industries
 Revolutionizing Golf & Sports Turf Drainage

Circle 146 on card or www.oners.ims.ca/5063-146

North Scott Community Schools

Soccer Field Maintenance Equipment

- National Hydro 70 Tri-Plex Mower
- John Deere 4600 Tractor
- Allied 150-Gallon Spray Tank and Boom
- BEFCO PTO Driven Overseeder
- Jacobsen Model 40 PTO Driven Blower
- Powerline 5000 Airless Field Painter
- Toro Workman Utility Vehicle

Rented Equipment

- Dakota Topdresser
- Toro ProCore 4000 Aerator

Sports Field Maintenance Planning

BY JOHN NETWAL, CGCS

The planning of maintenance activities for sports fields is not an exact science or is it a simple task. There are usually far too many variables from one facility to another to even suggest that any one system of planning would work for everyone. However, we do believe that thorough planning is the key to good turf management and despite my inhibitions about writing, I will attempt to share with you a brief overview how we go about our planning process.

Normally, we begin our process by doing a little research on the facility we are intending to maintain. We examine the previous years' records, prior maintenance practices, and the last season's schedules for any clues about the facilities history. Then we accurately measure the field and identify what the field use or uses are. Then we investigate what the field is comprised of, we want to know if the field is of native soil origin or had it been modified in some way during its construction. Then we will study the drainage and irrigation systems to find out what we are working with and whether or not some improvements might be necessary. Finally, we review the soil and water test to see if there are any issues that may impact our ability to grow healthy turf. After we gather all this preliminary information about our field, we then can begin to formulate a few ideas of what it might take for us to maintain this field.

Our next step is to try to learn all we can about what the expectations of, and demands on, the facility are going to be. We have found it very helpful to visit with our coaching staffs, athletes, and officials to get this information. Our coaches have graciously provided us with their practice and games schedules, while our athletes and officials have shared with us many of the little nuances to their games. Through these conversations we have learned a lot about the footing requirements of our playing surfaces as well as the importance of a true and accurate roll of a soccer ball to an athlete.

Knowing what our coaches and athletes are looking for has gone a long way in helping us to design management programs to meet their needs.

One of the primary tools that we use in the early stages of our planning process is a system of separating our management levels into three different categories based on written criteria. These categories have helped us to decide what level of maintenance we are going to assign to any particular field.

Our category "A" fields are our best fields and they receive our highest level of

maintenance. Our category "B" fields represent our middle of the road facilities and they receive a slightly less intensive program. The category "C" fields represent our general grounds areas and they basically receive minimal input. The use of these categories has helped us to differentiate the maintenance levels for our wide variety of facilities that we maintain and assures us that each type of field is getting its appropriate allotment of resources (see sidebar).

Once we have selected the appropriate management category for our field, we then begin to develop "a field fact sheet." These fact sheets help us to outline our



Photo courtesy of John Mohr Photography.

intended maintenance activities and serve as our primary planning guide. We record the following information on our field fact sheets for each type of our facilities:

- * What type of field we are working with (baseball, football, etc)?
- * Program year
- * When was the field built (year)
- * Field size
- * Type of construction of the field and soil type

Field Maintenance Categories

We have based our management categories on the following criteria:

Category "A" Fields

- * Our Best Fields
- * Varsity Sports Only
- * High Level of Management
- * Source of Community Pride
- * High Fertility (5-6 #'s N/m/year)

- * Automatic Irrigation System
- * Limited Use
- * Aggressive Level of Cultural Practices (multiple overseedings and aerifications etc.)

Category "B" Fields

- * Varsity Practice Areas
- * Junior High Game Fields

- * Limited Community Access
- * Medium Level of Management
- * Moderate Fertility (3-5 #'s N/m/year)
- * Manual and Automatic Irrigation Systems
- * Moderate Level of Cultural Practices (annual overseeding and aerification etc.)

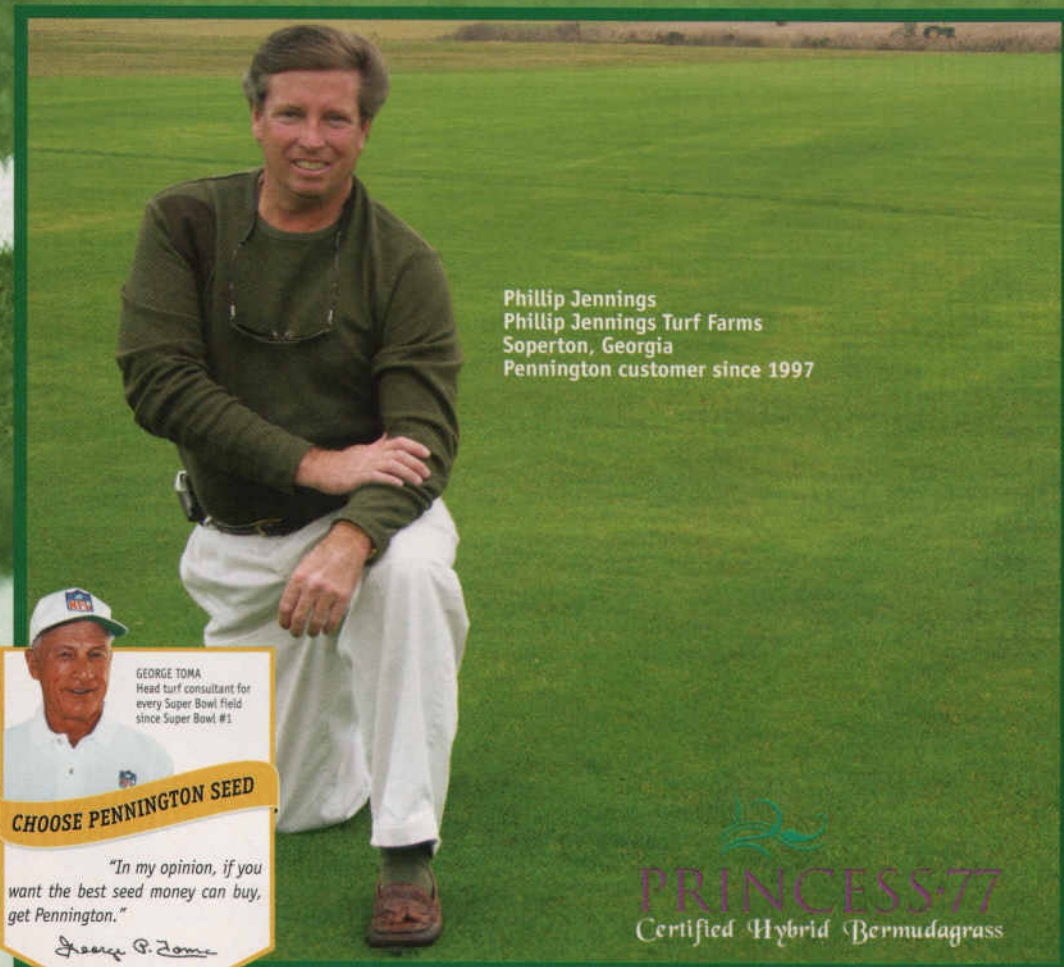
Category "C" Fields

- * General Grounds Areas
- * Junior High Practice Fields
- * Community Access
- * Low Level of Management
- * Low Fertility (0-3 #'s N/m/year)
- * No Irrigation
- * Low Level of Cultural Practices, if any

North Scott Community Schools Field Fact Sheet

Sand Based Soccer Field	Turf Species: "Sure Shot" Low Growth Bluegrass	Girls Programs	Heads, Rain Bird Controller, and City Water	Growth Regulator: Primo, Monthly During Growing Season
Program Year: 2005	Expectation Level: Very High, Category "A" Field	Practice: Everyday April 1- June 10	Over Seeding: Annual Program with "Sure Shot" Kentucky Bluegrass	Herbicide: Broadleaf Control 2-year Rotation (2004), Pre- emergence Annually if nec- essary
Built: 2001	Nutrient Target: 6 #'s N, 1.8#'s P and 4.6 #'s K/m.	Special Events: Junior High Football, Two Games / Week, September - October	Topdressing: Monthly	Insecticide: Scouting Treatment if Necessary
Size: 109,000 sq. ft.	Annual Events: 23, Annual Events for both Boys and	Irrigation: Automatic System, 56 Hunter I-40	Aeration: Annually 5/8-in. Core and Periodic Slicing	
Construction: Sand Based, USGA Golf Green Specifications				

When your customer is the biggest game in town, you better be ready to play.



Phillip Jennings
Phillip Jennings Turf Farms
Soperton, Georgia
Pennington customer since 1997

GEORGE TOMA
Head turf consultant for
every Super Bowl field
since Super Bowl #1

CHOOSE PENNINGTON SEED

"In my opinion, if you
want the best seed money can buy,
get Pennington."

George P. Toma

PRINCESS 77
Certified Hybrid Bermudagrass

We're proud to say that Princess 77 is once again the turf for the Super Bowl field — a major reason Phillip Jennings has been growing Princess 77 since it was released to the sod market. "From a growers standpoint, Princess 77 is a superior product for its rapid establishment from seed, deep green color, the fineness of the blades *and* its ability to handle high traffic areas. It's a wonderful grass that we're very proud of. And our customers are demanding it — it provides a faster recovery time than 419 and has a superior root system."

When asked if he recommends Pennington Seed to others, Phillip replies "Without reservation. I've been using their bermuda and fescue products since I've been in the sod business."

Need more proof? George Toma, the head turf consultant for *every* Super Bowl said, "This is the best looking sod I have ever seen for a Super Bowl!"

These guys rely on Princess 77 — shouldn't you?



For info, e-mail: sportturf@penningtonseed.com, call 1-800-285-SEED or visit: www.penningtonseed.com

- * What is the desirable turf species?
- * The level of management category "A", "B", or "C"
- * Nutrient target
- * Number of annual events
- * Number of annual practices
- * Number of special events
- * Type of irrigation

Then we begin to look at what cultural practices we believe would be necessary for our plan based on our selected management category of either "A", "B", or "C" fields. We evaluate each of these cultural practices for their benefit as well as decide upon the timing and frequency that we would like to use them. Once we have made our selections we put this information

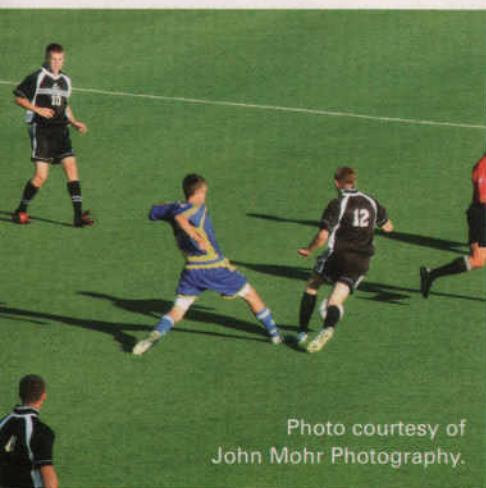


Photo courtesy of John Mohr Photography.

on our field fact sheet:

- * Aerification (solid tine, deep tine, hollow tine, etc.)
- * Overseeding & sodding (seasonal seeding, monthly or weekly etc.)
- * Irrigation & drainage (daily watering, deep infrequent or only after wilt)
- * Fertility (1-3#s, 3-5#s or 5-6#s annually, granular or spoon feeding etc.)
- * Mowing (in season and out of season frequencies, reel or rotary mowing)
- * Plant protectants (no program, curative or preventative)
- * Topdressing (bi-weekly, monthly or annually)
- * Amendments (soil, water, compost or other)
- * Other

With our field fact sheet complete, it then becomes our primary planning tool for all our maintenance programs. With this information at our fingertips along with our schedules of use from our coaching staff, we are now ready to build a management plan to fit our field (see figure).

Before using these methods of planning we were basically treating all of our fields the same. In many ways we were just not getting the most out of our resources despite the quality of

our fields. So when we implemented these systems in our planning process our programs have taken leap forward and the proof of that is the quality of conditions found on all of our facilities. So if the key to good turf management is good planning, then we believe that we are head down the right road. **ST**

John Netwal, CGCS, is Director of Operations for North Scott Community Schools, Eldridge, IA.



In a league of its own
with a throw to 115 feet.

Install Confidence® Install Rain Bird® 115-E Commercial Rotors.



Exclusive Rain Curtain™ Nozzle Technology uniformly distributes water throughout the entire radius range — even close in around the head to eliminate dry spots. Rotor shown with optional artificial grass cover.

The Rain Bird 115-E Rotor distributes water farther than any other commercial product currently available—up to 115 feet. This performance advantage is just one reason why the 115-E Rotor is the ideal choice for large turf and artificial surface applications where maximum spacing is required. Additional advantages include:

- Rain Curtain™ Nozzle Technology – large droplets for consistent performance, effective close-in watering and even distribution over the entire radius.
- Valve-in-Head configuration allows the flexibility to zone each rotor individually to efficiently maintain flow control and run times.
- Built-in, factory preset pressure regulation for optimal nozzle performance.
- Adjustable stator can be set for rotation times as short as 90 seconds to accommodate high-speed wetting or cooling applications.
- Expanded radius of throw provides uniform head-to-head coverage from around the playing surface perimeter. Fewer heads and less trenching are required, which saves time and money.

Unrivaled performance. Efficiency. Value. That's the Rain Bird 115-E Commercial Rotor. For additional details see your Rain Bird distributor, or visit www.rainbird.com.



Striping Made Easy



Eco-Liner II

...With Newstripe Eco-Liners

- Easiest cleaning machines on the market
- Pump paint directly from 5 gallon pails
 - Gas or Battery powered units
- Bi-Directional spray heads make bright lines in just one pass
- Continuous Paint Agitation
- Will not damage turf or roots



NewRider 2000

...NewRiders

- 30 & 55 gallon models
- Built in purge systems
- Bi-Directional spray heads
- 5 speed & hydrostatic drives

Field Maintenance



Dirt Doctor

- Nail Drags
- Drag Mats
- ProLine Field Layout System
- Dirt Doctor Infield Groomer 4' & 6' Models 3 pt. Hitch or Tow

NEWSTRIPE
INC.

1700 Jasper St., #F
Aurora, CO 80011

www.newstripe.com

1 800-624-6706

Circle 148 on card or www.oners.ims.ca/5063-148

around the grounds

Little League WS experience inspires student

BY GEORGE G BERNARDON, CSFM

Now I can say that one of life's goals is complete. It took a number of years but I did what every father dreams of, taking his son to the Little League World Series.

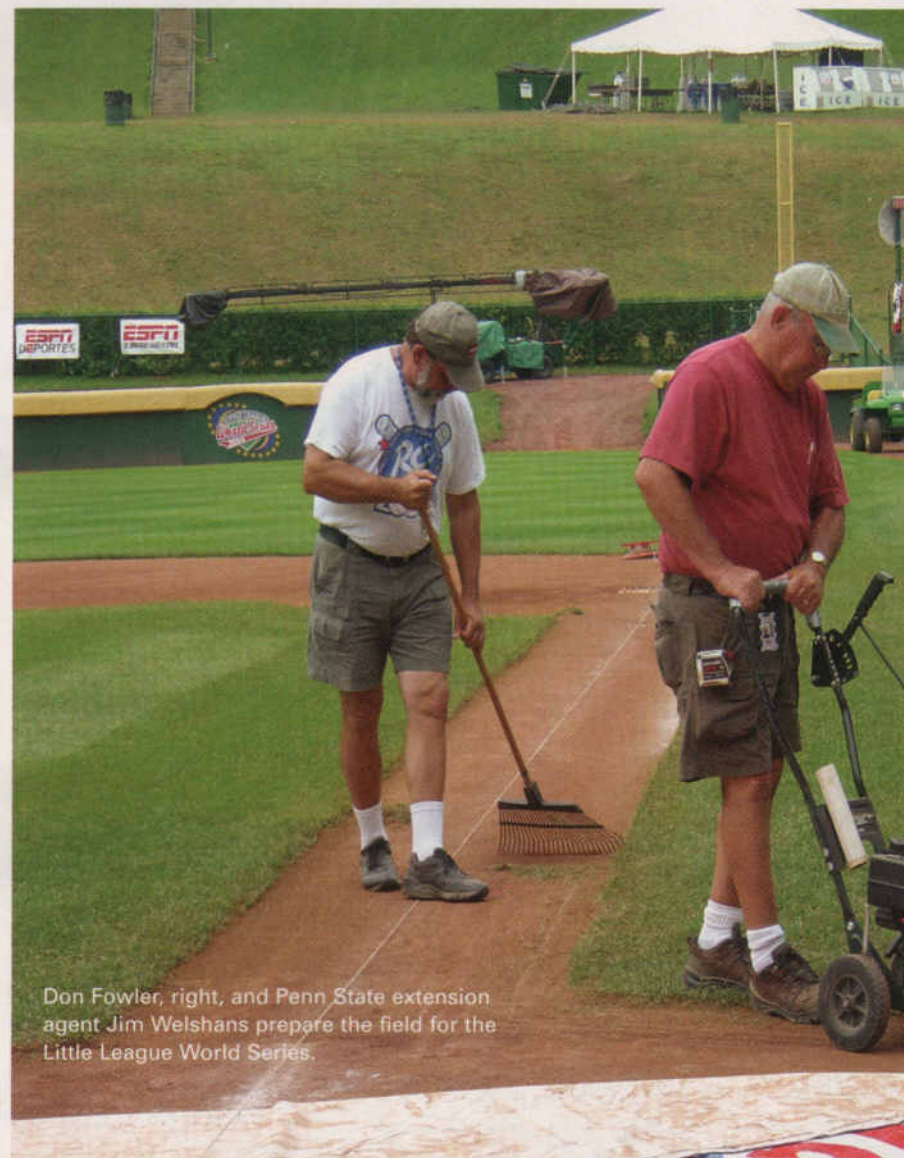
But Alex was 16, six feet one inches tall and obviously not a Little Leaguer. Instead, we had been invited to join Don Fowler's handpicked group of volunteers and local personnel that assemble once a year to create the masterpiece field that everyone sees on TV. What a unique group of individuals; there was a teacher, elementary school principal, three high school students including my son, three Ag extension agents, a local park manager, city worker, the owner of a local landscape contract business, one professional athletic field manager and one certified sports field manager.

When I arrived Friday morning (day before national and international championship games) everyone was on the field working together to get the job done. At the lead was Don Fowler, retired Penn State extension agent, ensuring that all tasks were being completed. His biggest job was really juggling the field management team around the television crew requests and completing all the required tasks through minor filming interruptions.

On game day Don met with the production crews early in the morning long before we field managers arrived. Rain was in the forecast and they wanted to get both games in. It was agreed that both fields would be made TV and game ready just in case. No problem! The field management team assembled, received directions from Don,

and off we went preparing both sites. By noon both fields were ready.

As time for the International championship game approached, so did the heavy clouds. Game time was scheduled for 2:00 PM; at 1:45 the Public Announcer asked everyone to seek cover due to a line of heavy thunderstorms in the area. Don working with production crew, decided that we would cover the field in advance of the storm. We were late, the rain started before we got the cover down, but before any damage



Don Fowler, right, and Penn State extension agent Jim Welshans prepare the field for the Little League World Series.



Fowler and his crew break for a "photo op."

could occur. Fifteen minutes later the worst of the storm had passed and we started pushing the water off the tarp with any thing that could move water. As we were rolling up the tarp the PA announcer said "Let's hear it for our grounds crew" and a loud roar came from the stands. We got a little respect!

Once the game was over everyone picked up hand tools, buckets, wheelbarrows, paint and went to work. Less than one hour later the field was ready for the American championship game. During this game my son and I stayed at field level serving as the emergency grounds crew. He really enjoyed himself as we sat in the dugout with one of the teams and the TV crew. As the camera panned into the dugout, Alex got in a few on-screen cameo shots, which they noticed back home.

It was a wonderful experience and I could never thank Mr. Fowler



enough for the opportunity to serve. One footnote to this story, my son Alex has enrolled in a 2-year Sports Turf Management Program. **ST**

George G Bernardon, CSFM, is Director of Grounds Management for GCA Services Group, Inc.

New topdresser models. Lower prices. Breakthrough technology.

Home Field Advantage



The ball plays truer.

The surface is healthier.

Affordable New Models with Breakthrough Technology



Saber Tooth wide spread beater system

The revolutionary Millcreek Saber Tooth™ spreading system makes all other topdressers obsolete. Millcreek's new, low-priced Turf Tiger™ Cub models, **at under \$9K**, bring the world's best topdressers within reach of any school or park budget.

Millcreek brings out the best in your turf

Most topdressers choke on wet, clumpy soil treatments found in real-world conditions. Millcreek's patented Saber Tooth technology solves that problem. Now you can spread both coarse or fine materials quickly and efficiently, no matter what their consistency.

Millcreek Topdressers produce healthy playing surfaces

Millcreek's Turf Tiger Cub provides a more consistent, healthier playing surface—healthier environmentally and for the players.

Millcreek's Cub Topdressers with Saber Tooth technology

Model 3100—1.8 cu. yds. (heaped), Model 3200—2.3 cu. yds. (heaped)

Get the job done quickly!

Versatile



Both Turf Tiger Cub models can spread wet or dry, coarse or fine materials.



Call (800) 311-1323
or visit
www.MillcreekMfg.com

Circle 149 on card or www.oners.ims.ca/5063-149

PIONEER'S BRITE STRIPER 1600 PS

Pioneer's Brite Striper 1600 Professional Series includes a heavy-duty piston compressor for years of trouble free service and a 4 position adjustable handle that offers comfort for multiple users. The Brite Striper 1600 is also equipped with a standard two-headed sprayer that cuts field striping time in half by ensuring crisp, professional lines the first time. The Brite Striper 1600 comes with a 3-year warranty and the 12-gal. paint tank comes with a 5-yr. limited warranty against rust out.

Pioneer Manufacturing Co./800-877-1500
For information, circle 075 or
see <http://www.oners.ims.ca/5063-075>



TERRA SPIKE® XF



eXtremely
new
Fast



Excellent Turf Cruising

The shock absorbing systems **VibraStop** and **PowerPack** provide for a unique smoothness of running.



High Productivity

Decompact and aerate your turf at an operating speed of up to **3.7 mph**.

...the Revolution

- ◆ **VibraStop / PowerPack** shock absorbing systems
- ◆ **Working depth up to 9"** solid and coring tines
- ◆ **TwinDrive** encapsulated drive
- ◆ **Up to 3.7 mph** operating speed
- ◆ **QuickSet** setting of working depth and tine entry angle
- ◆ **QuickFit** integrated tine mounting and removal system



Wiedenmann NA, LLC · Savannah, GA · Phone (912) 790-3004 · Toll free (866) 790 3004
Fax (912) 790-3005 · E-Mail: office@terraspike.com · <http://www.terraspike.com>

Circle 150 on card or www.oners.ims.ca/5063-150



NEWSTRIPES' HASHMARK-MASTER

The Hashmark-Master paints hashmarks faster than any other method. Plus, it is a one-man job unlike using heavy templates that require a two or three men crew.

The Hashmark-Master attaches to any Newstripe field-marking machine. The operator follows the automatic line-up guide from one hash mark to the next, paints it and moves on. It is that simple. No more measuring or using messy templates.

Newstripe, Inc./800-624-6706
For information, circle 077 or
see <http://www.oners.ims.ca/5063-077>



STOW-N-GO FIELD MARKER

Tru Mark Athletic Field Marker introduces the Model EZ-70 Stow-n-Go field marker. Tru Mark incorporated its floating paint shoe technology on a 3-wheel steel chassis for durability and control even when painting curved lines and in close quarters. This new field marker integrates easy operations and maintenance capabilities with a removable 5-gal. paint tank, 12-volt sealed battery, and a 12-volt diaphragm pump.

Tru Mark/800-553-6275
For information, circle 076 or
see <http://www.oners.ims.ca/5063-076>



TURF FOOTWEAR

LawnGrips are designed for mowing; the waterproof, protective toe shoes have tractioned outsoles called Grip-N-Go. This tread pattern is made for pushing, turning, and stopping. The lugs and centers of the heel and forefoot are slightly rounded to shed clippings and mud. All shoes have steel toes for safety.

LawnGrips/877-447-4771

For information, circle 080 or

see <http://www.oners.ims.ca/5063-080>

TORO LINE PAINTER 1200

The Toro Line Painter 1200 is a walk-behind line painter and the company's first product built specifically for the sports turf market. "After we saw [it] at the STMA show, we begged to be one of the first to get one delivered," Jeff Wynn, on the crew at Brigham Young University in Provo, UT said. "We have been using it for about a month to line 10 or 11 fields, once or twice a week."

Wynn has used the Toro Line Painter 1200 on spring and summer sports fields at BYU, including: baseball, softball, grass volleyball, bocce ball, rugby and futsal, a variation of soccer. "It saves time because it mixes the paint right in the tank," Wynn added. "And the large, 12-gallon paint tank allows more time working instead of constantly stopping to fill up the tank."

Toro/800-803-8676

For information, circle 078 or

see <http://www.oners.ims.ca/5063-078>



FUTURE PRO SOCCER GOALS

These portable aluminum soccer goals come in three styles, with 4-in. square or round, or 2 x 4-in. aluminum crossbar and corner posts. Sizes range from 24-ft. official competition goals to 9-ft. bantam size. All feature QwikTrack net attachment tracks, a rear stabilizer bar and a backstay design to eliminate weld failures. Wheel kits are standard on 4-in. square and round goals.

Future Pro/800-328-4625

For information, circle 073 or

see <http://www.oners.ims.ca/5063-073>

Winning Lineup @ Victory Field

LAUNCH[®] SCORES BIG ON SPORTS TURF

"Launch is the premium product when overseeding. The product formulation is perfect for our fall overseeding program. The mixture is ideal for the new seedlings as they emerge and establish to form a dense turf canopy."

— Jamie Mehringer, Head Groundskeeper
Indianapolis Indians, Indianapolis, IN

Ask your distributor about New Launch Dry granular formulation.



• Enhances Germination • Speeds Establishment

G pbi/gordon
CORPORATION

An Employee-Owned Company
800.821.7925 • pbigordon.com

00018

Circle 151 on card or www.oners.ims.ca/5063-151

NEWSTRIPE COOL-AIDE

Cool-Aide is a portable heat stress reduction system. The individual misting wands can reduce the surrounding air temperature by up to 20 degrees F, preventing possible player heat stress and stroke. Unit is completely portable and can be used anywhere: away games, stadiums, practice fields, tennis courts. It is totally self contained and requires no electrical power or water source.

Newstripe, Inc/800-624-6706
For information, circle 074, or
see <http://www.oners.ims.ca/5063-074>



Demand the Best



Delta Bluegrass Company produces the highest quality peat and sand grown sod in the industry...period.

If you are a sports facility manager who demands the best, become part of our team – call today!

DELTA BLUEGRASS COMPANY

#C-27 752734

Steve Abella – 866-826-4200

www.deltabluegrass.com

Delta Bluegrass Company's
Baby Bermuda™ turf



BISON SHOOTOUT PORTABLE GOALS

Bison has introduced the first 4-in. square and 4-in. round competition soccer goals to maintain a 24-ft. width when used with or without corner post safety padding. You don't have to sacrifice player safety to maintain the integrity of the game! This design allows assembly with official 24-ft. inside opening or 24 ft., 1 1/4-in. opening to compensate for the use of DuraSkin for Soccer corner post padding. Goals meet NCAA, National High School Federation and FIFA rules.

Bison/800-247-7668
For information, circle 072 or
see <http://www.oners.ims.ca/5063-072>



KEEPER GOALS' MOVABLE GOAL

The ideal moveable goal with five semi-pneumatic wheels built into the frame that glide over the playing field. Goals can be easily moved by two people to accommodate drills so you can save valuable time. Wheels lock in place when in use, and goals are counterbalanced to make this goal durable and safe to use. May be used on grass or artificial turf.

Keeper Goals/800-594-5126
For information, circle 071 or
see <http://www.oners.ims.ca/5063-071>