

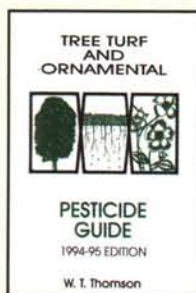
Find the professional references you need at the

adams book guild



Sports Turf Management Program-Maintenance & Renovation Planning Guide, by Ashman & Associates
This manual was developed to provide a coherent plan for the management of the baseball field playing surface and provides operational guidelines for the grounds crew to use as part of the maintenance plan. Enhances the "playing conditions" of the field by elevating the maintenance standards to the highest level possible. Complete descriptions of the maintenance protocol and identification of key issues to be discussed before starting objective maintenance procedures. This book provides a plan of action outlining the tasks to be completed and benchmarks to measure the progress of the program. 160 pgs.

4024 \$105.00



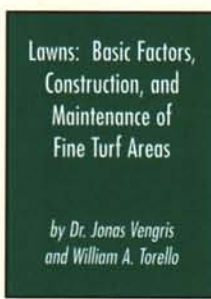
Tree, Turf, and Ornamental Pesticide Guide, by W.T. Tomson This is one of the few references today designed as a guideline to pesticide usage in the specialized ornamental field. It lists the major ornamentals grown either in the home or garden, in nurseries, in greenhouses, or in commercial production with a cross reference as to what pesticide may be used on them. Insecticides, herbicides, fungicides, and growth regulators are listed along with what each will control. This is a valuable tool for PCO's, nurserymen, greenhouse operators, grounds superintendents, turf specialists, etc. 200 pgs.

4127 \$18.50



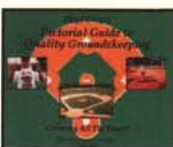
Maintain It Easy/Keep It Safe, by Vengris and William A. Torello Learn from hundreds of instructional photos featuring all aspects of softball field groundskeeping. Explains: Lip reduction; setting of multiple bases and pitching plates; dragging equipment and patterns; base line options; unique complex ideas; dugout design; batting cage and hitting station; layout; water removal and much more. Unique field ideas from across the country.

4023 \$37.00



Lawns: Basic Factors, Construction, and Maintenance of Fine Turf Areas, by Dr. Jonas Vengris and William A. Torello Designed as a textbook or a practical usage manual, this book has been completely brought up-to-date. Care of lawns and turfgrass, from selection of varieties to maintenance of established grass is completely covered. A needed tool for gardeners, nurserymen, county agents, landscape designers, and a text for college turfgrass courses. This is the most up-to-date book on turf management available today.

195 pgs. 4128 \$15.50

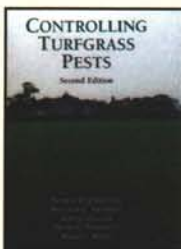
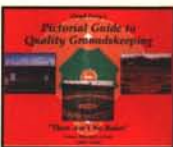


Pictorial Guides to Quality Groundskeeping Book I and Book II, by Floyd Perry The only textbooks on the market for the grounds supervisor, athletic coach, little league volunteer, or baseball purist. Over 500 photos in each text with many in color. Book One, "Covering All The Bases" (100 pgs) covers Mound and Home Plate Repair; Edging, Dragging, Lip Reduction; Water Removal; Homemade Equipment and Tricks of the Trade. Book Two, "There Ain't No Rules", (108 pgs.) covers Football, Soccer, Softball, Little League, Minor League, College and High School Facilities. Also covers Curbside Appeal; Tricks of the Trade, New Ideas for Easy Maintenance; Professional Research from Higher Learning Centers and much more.

4008 - Book I

4009 - Book II \$36.60 ea.

4022 - 2 bk set. \$69.90



Controlling Turfgrass Pests, by Malcolm C. Shurtleff, Thomas W. Ferman & Roscoe Randell This book is an up-to-date account of the current state of the art and science of turfgrass pest management. It is designed as a comprehensive reference for the professional turfgrass manager which includes golf course superintendents, lawn care company personnel, park and cemetery officials, those responsible for maintaining turf on sports fields, at airports, and along highways, seed and sod growers, and landscapers. 448 pgs.

4031 \$85.00

Please indicate quantities of each publication

___ 4024	Sports Turf Management Program-Maintenance & Renovation Planning Guide	\$105.00
___ 4127	Tree, Turf, and Ornamental Pesticide Guide	\$18.50
___ 4023	Maintain It Easy/Keep It Safe	\$37.00
___ 4128	Lawns: Basic Factors, Construction, and Maintenance of Fine Turf Areas	\$15.50
___ 4008	Pictorial Guides to Quality Groundskeeping Book I	\$36.60
___ 4009	Book II	\$36.60
___ 4022	2 book set	\$69.90
___ 4031	Controlling Turfgrass Pests	\$85.00

Payment Must Accompany All Orders

Payment Enclosed To charge your order by phone call 1-800-396-3939

Charge my Credit Card Visa M/C Amex Signature _____
Card Number _____ Exp Date _____

IL residents add 8.25% sales tax.

Name _____
Title _____
Company _____
Type of Business _____
Street _____
City _____ State _____ Zip _____
Country _____
Telephone _____ Fax _____

ALL SALES ARE FINAL

INCLUDE SHIPPING & HANDLING 1-2 bks \$7.50 3-6 bks \$10.00 7-10 bks \$15.00 10+ bks \$21.00

ADAMS BOOK GUILD • 2101 South Arlington Heights Road, Suite 150 Arlington Heights, IL 60005-4142 • Tel: 1-800-396-3939 • Fax: 847-427-2037

Please allow 4 weeks for delivery

Visit us at www.industrybooks.com for our complete catalog listing

Category Blast Service

Use this new Category Blast Service to get FREE information on the products or service categories listed below which you are planning to purchase within the coming nine months. You will receive information, and possibly other follow up contact, from appropriate companies advertised not just in this issue, but throughout the year in **sportsTURF**. Just circle the number(s) on the reader service card (opposite) corresponding to the product or service categories below and drop the card in the mail!

- 9001 Aeration equipment
- 9002 Baseball Field grooming equipment
- 9003 Drainage
- 9004 Fertilizer / soil amendments
- 9005 Field covers
- 9006 Field marking paint / equipment
- 9007 Infield mixes
- 9008 Irrigation supplies
- 9009 Mowers
- 9010 Seed
- 9011 Site amenities
- 9012 Sod
- 9013 Turf equipment



If they could,
they would...

Play their game on Thomas Bros. Grass

That's because they know Thomas Bros. grows and installs the finest quality turf grass for golf courses and sports fields. With 17 different turf varieties, Thomas Bros. can provide durable, attractive playing surfaces for any grass field (sorry, hockey!).



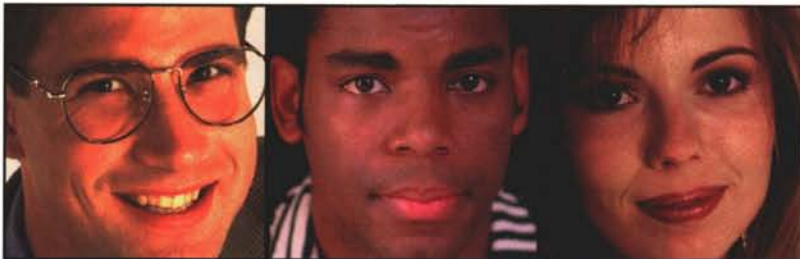
Call Today 888-New-Grass

Call 1 (800) 817-1889 use **Fast Fax #1260399** and/or Circle 126 on Inquiry Card

Product Information

for every

Tom, Dick, and Harriet.



In every issue of our magazine, you can choose from more than 100 brochures covering the latest products, services, and company information.

Looking for the information is easy. Visit the Reader Service area on [greenindustry](http://www.greenindustry.com), and place your order today!

<http://www.greenindustry.com>

The fast way to get what you need.

* PRODUCT SHOWCASE *

STADIUM VAC

"Cleans up on the competition"



- Parks & Rec.
- School Districts
- Municipalities
- Beaches
- Commercial
- Residential
- Industrial

Heavy Duty Steel Construction
Powerful 11HP Honda Elect. Start Engine
10" Diameter Suction Hose
Re-usable Liner

Broyhill ...over 50 years of excellence.

800-228-1003

One North Market Square · Box 475 · Dakota City, NE 68731
www.broyhill.com · email: broyhilsal@aol.com

Circle 127 on Inquiry Card

Grooming Rake



\$75 + S&H

Introducing the new **Surface®** or Amended Infield Surface Grooming Rake

- 36" double-sided light weight aluminum
- 3/4" triangular shaped teeth to loosen infield surface
- 1/2" square teeth for fine grading infield material
- Creates a Game-Ready Surface

Floyd Perry's GMS

Grounds Maintenance Services for Sportsfields

1-800-227-9381

Ask for free Pocket Guide and Price list or call your Surface® Distributor for information

Circle 123 on Postage Free Card

Brickscape™ Brick Fines Warning Track Material



Give your field a professional look!

- Brick Red Color
- <1/4" particle size
- Excellent absorption properties keep track dry

Cherokee Sanford Brick

800-774-5330 or 919-774-5330

www.cherokeesanford.com/brickscape.html

e-mail: jmaury@cherokeesanford.com

Circle 128 on Inquiry Card

Stripe Like A Pro

Pro-Stripe

Athletic Field Marking Paint

- Long lasting Great Coverage.
- Easily applied by brush, roller, airless spray for line marking machines.
- **OPTIWHITE™** used for high reflectance under artificial lighting and for low angle viewing.
- Will not harm grass, uniforms or players.
- Dilutable up to 3:1 (water/paint) for additional savings of 50%-75%.
- Free shipping w/50 gallon purchase.



"EZ-100" Striper®

- Quiet, clean, Environmentally friendly.
- Long life, battery operated.
- 14 gallon polyethylene tank.
- 50-60 psi Shurflo Pump®.
- Built in charger plugs directly into any outlet.

Whitlam Paint Company

Division of J.C. Whitlam Manufacturing Co.

(800)321-8358

Contact: Dale Forester

Circle 123 on Postage Free Card

* PRODUCT SHOWCASE *

Jaydee Drive Liner



The Jaydee Drive Liner is a self-propelled riding line marker. The 35-gallon paint tank carries enough marking material for a complete game field, or several practice fields. The 2-gallon flush tank cleans the discharge lines for work breaks, travel, or overnight. The center or side-mark spray shields are always operator-visible. A nearly zero turning radius reduces or eliminates back and turn maneuvers.

Jaydee Equipment Company

202 East Joliet Highway, Box 278
New Lenox, IL 60451-0278
TOLL FREE: 1-800-443-3268

Circle 131 on Inquiry Card

New From Kromer



Kromer U-tility Athletic Field Maintenance Machine (AFMM™)

13hp engine for more power.
Heavy duty hydrostatic transaxle.
High back - comfortable - adjustable seat.

One machine does it all - lining - grooming - spraying - line cutting - ridge removal, etc.

Specialists in Athletic Field Maintenance Equipment

Kromer Co. • Mound, MN 55364
(800)373-0337 • Fax (612)472-4371
www.kromer-afm.com
e-mail: kromer@kromer-afm.com

Circle 123 on Postage Free Card

Water Reels



Kifco has introduced two models to their popular line of Water-Reels. The new B110 and B180 extend the product line to ensure there is a Water-Reel to fit your needs. Machines are compact, easy to use, operate unattended, and shut off automatically. They are suitable for all types of sports turf and are easily transported from one area to another. Water-Reels combine outstanding features that come from more than 25 years of traveling sprinkler engineering.

Kifco, Inc.

P.O. Box 290, Havana, IL 62644
PH: (309) 543-4425 FAX: (309) 543-4945
<http://www.kifco.com>

Circle 132 on Inquiry Card

Turf Stencils, Paints and Colorants



WORLD CLASS TURF STENCILS designed to provide high quality field graphics at an economical cost



WORLD CLASS TURF COLORANT truly makes the game look better for golf course fairways, greens, tees, any natural sports turf.



WORLD CLASS ATHLETIC FIELD PAINTS available in bulk and aerosol manufactured by World Class in white and a vast selection of colors

We are a full service company for natural and artificial turf fields and athletic surfaces.

World Class Athletic Surfaces

P.O. Drawer 152
Leland, MS 38756-0152
800-686-9997
Fax: 601-686-9977

Call 1 (800) 817-1889 use **Fast Fax #1340399** and/or Circle 134 on Inquiry Card

* PRODUCT SHOWCASE *

Laser Guided Grading



Level Best Grading System

- Automatic laser guided grading system eliminates uneven grades.
- One operator can grade to within 0.25 inches.
- Sturdy box construction withstands field conditions.

The **Level Best** Grading System offers new features to turf professionals. It is perfect for installing and maintaining golf tees/greens and playing fields. **Level Best** is available in widths from 4 feet to 10 feet and it easily attaches to class I or II tractor or skid steer.

Level Best
42 Ridge Road
Phoenixville, PA 19460
Tel: (610) 917-8900
Fax: (610) 983-9884

SOILMASTER-CHOICE OF THE PRO'S



Designed to meet the challenges of wet, dry and compacted infield conditions, **SOILMASTER**, a unique kiln hardened mineral contains a carefully balanced mixture of highly absorbent particle sizes. This desired blend of course-to-fine granules creates a porous soil profile for better drainage, quick absorption of excess water and improved infield playing conditions. Along with the White Sox, **SOILMASTER**, is also the choice of the Brewers, the Yankees, the 97' Champion Marlins and many other major and minor league teams. For a truly effective and long lasting infield conditioner make your choice the PRO'S choice.....**SOILMASTER**

PRO'S CHOICE, INC.
P.O. BOX 70
Barrington, IL 60010
(800) 648-1166

Circle 137 on Inquiry Card

Permanent Pitcher's Mounds & Batter's Boxes



Save time and money with these patented, poured red polyurethane, permanent outdoor **Pitcher's Mound and Batter's Box Pads**. Great for recreational fields! Bury 2" below surface and eliminate deep holes! Safe, long-lasting and provides the feel of properly packed clay. On-Deck Circles and Fungo Pads also available with non-skid granular surface. Some of the over 200 baseball and softball products available from "Your One-Stop Source for America's leading sports surfaces and supplies:"

PARTAC/BEAM CLAY®
Kelsey Park, Great Meadows, NJ 07838
800-247-BEAM • 908-637-4191

Circle 123 on Postage Free Card

Meet The Royal Family of Turf Tall Fescue Varieties & Blends



In breeding our newer varieties of tall fescue grasses, we've emphasized stress & disease tolerance along with lower growth for less mowing, richer color and denser turf quality. Our blends of these varieties add extra adaptability over a wide range of climate and growing conditions.

Call our turf specialists for a personal introduction to Bonanza II, Grande, Crew-Cut, Cut-Less and our Turf Tall Fescue Blend.. They'll give you the **Royal Treatment!**

Royal Seeds
1(800) 228-4119
Circle 138 on Inquiry Card

* PRODUCT SHOWCASE *

Automatic Laser Grading System



For level, single, or dual grade, **GRADEMASTER** is auto-matically laser controlled and eliminates uneven grade, potholes, wet spots and dips on athletic fields, greens or tee boxes. **GRADEMASTER** . . . The Right Choice for your Grading applications.

GRADEMASTER is easy to use! One man can operate **GRADEMASTER** and achieve improved accuracy.

For information and video contact:

Southern Laser, Inc.

P.O. Box 338

Lutz, FL 33548

Tel: 800 622-5777 (813) 949-4777

Fax (813) 949-0509

Call 1 (800) 817-1889 use *Fast Fax* #1390399 and/or Circle 139 on Inquiry Card

Vigaroot

It is in the Bag with Vigaroot



Heat stress, insect and disease pressure all take their toll on your turf. Vigaroot is a new turfgrass management tool designed to help reduce stress and stimulate root growth through enhanced water and nutrient uptake. Vigaroot's dry formulation combines humic acid, seaweed and yucca extract, beneficial bacteria, and fully chelated iron, zinc and manganese. Vigaroot is packaged in a premeasured foil bag to provide easy use and ensure longer shelf life and stability.

Becker Underwood, Inc.

800-232-5907

801 Dayton Ave

Ames, IA 50010

www.bucolor.com Vigaroot is a trademark of

Becker Underwood, Inc.

Circle 123 on Postage Free Card

12-Volt Field Markers



The Tru Mark Athletic Field Marker is designed for convenience, safety and economy. Uses efficient 12-volt Shurflo pump to deliver field paint at 45 p.s.i. Folding or removable handles for transport or storage. Powder coated finish, zinc plating, and stainless steel fasteners provide maintenance free life.

TRU MARK

Atheletic Field Markers

P.O. Box 1662 • Norfolk, NE 68702-1662

Phone: 1-800-553-6275

Circle 140 on Inquiry Card

Stabilizer



Stabilizer is nature's most unique soil amendment. It is designed by nature to enhance the equilibrium of the soil. Stabilizer when mixed with clays, loams, sand or crushed stone, binds them together with water to produce a firm resilient playing surface that produces less mud, less dust & more playing time. For more information, please contact Stabilizer Solutions at:

Stabilizer Solutions, Inc.

205 South 28th St.

Phoenix, Arizona 85034 • USA

(602)225-5900 • Fax (602)225-5902

1-800-336-2468

<http://www.stabilizersolutions.com>

Circle 142 on Postage Free Card

Non-Clogging Pump



The Diamond Pump is a durable, non-clogging hand pump which easily removes 18-20 gallons of water per minute from dirt infields, sand traps, ditches. Made of tough ABS and PVC, a six-inch aluminum disc prevents mud from being drawn directly into the pump. Absolutely will not clog.

Kuranda USA

2014 Renard Court, Units E,
Annapolis, MD 21401
(800) 752-5308
Fax: (410) 266-3944

Circle 143 on Inquiry Card

**Do You
Need
Product
Info Faxed
To You
Now?**

**Use the
ADAMS
FASTFAX
SYSTEM**

Simply dial our 800# and follow the simple instructions; when you hang up, the information you requested will be faxed immediately and directly to the fax number you entered.

ADVERTISERS' INDEX

Aimcor	22
American Cyanamid	32
Beacon Ballfields	39
Becker Underwood	47
Befco Inc.	28
Broyhill Co.	44
Cherokee Sanford Brick Co.	44
Covermaster, Inc.	23
Cygnat Turf	22
Delta Bluegrass Co.	14
Earth & Turf Products	8, 18
Edie Trucking	39
First Products	25
Goossen Industries	39
Gordon Bannerman LTD.	19
Grounds Maintenance Services	44
J.C. Whitlam Mfg.	44
Jaydee Equipment Co.	45
John Deere Company, The	16-17, 26-27
Kifco Inc.	45
Kromer Co.	45
Kubota Tractor Corp.	51
Kuranda USA	48
Level Best	46
Loff's Seed	52
Milcreek	15
National Mower	30
Partac Peat/Beam Clay	31, 46
Pro's Choice	46
Royal Seeds	10, 46
Smithco, Inc.	20-21
Southern Laser, Inc.	47
Southern Turf Nurseries	25
Spartan Industries/Tru Mark	47
Stabilizer Solutions, Inc.	47
Thomas Brothers Grass	43
Tiftway Sports, Inc.	24
Toro, Commercial Products Div., The	2-3
Toro, Irrigation Div., The	5
Turfcro Mfg. Inc.	49
West Coast Turf!	9
World Class Athletic Surfaces	45



Jeff Boulden
Group Publisher
2101 S. Arlington Heights Rd., Suite 150
Arlington Heights, IL 60005-4142
(847) 427-2056
(847) 427-2006 (fax)
jboulden@mail.aip.com



Ellen Norton
Marketing Research Manager
2101 S. Arlington Heights Rd., Suite 150
Arlington Heights, IL 60005-4142
(847) 427-2011
(847) 427-2006 (fax)
enorton@mail.aip.com



**AR, CO, KS, MO, ND, NE, NM,
OK, SD, TX, WY**
Larry Anderson
17733 Bernadine St.
Lansing, IL 60438
(708) 418-3196
(708) 418-3197 (fax)
landerson@mail.aip.com



**CT, DC, DE, IN, MA, ME,
MI, NH, NJ, NY, OH, PA,
RI, VT, Ontario, Quebec,**
Paul Garriss
29100 Aurora Rd.
Solon, OH 44139
(440) 248-1125 Ext.241
(440) 248-0187 (fax)
pgarriss@mail.aip.com

**AL, FL, GA, KY, LA, MD,
MS, NC, SC, TN, VA, WV**

Deanna Morgan
3105 Northplace Way
Smyra, GA 30080
(770) 333-0994
(770) 333-8700 (fax)
dmorgan@mail.aip.com



IA, IL, MN, WI

Colleen Murphy
Millennium Marketing
Group, Ltd.
306 E. Sunset Dr.
Arlington Heights, IL 60004
(847) 590-1162
(847) 590-1163 (fax)
cmmurphy@earthlink.net



**AK, AZ, CA, HI, ID, MT, NV,
OR, UT, WA, Western Canada**

Gretchen Wagner
68-860 Perez Rd.
Cathedral City, CA 92234
(760) 770-4370
(760) 770-5868 (fax)
gwagner@mail.aip.com



CLASSIFIEDS

POND AND LAKE LINERS

Buy direct from fabricator
20, 30, 40 mil PVC, Hypalon, HDPE
& Polypropylene.
Custom fabricated panels. Material only,
Material & Supervision or
Complete Installation Service available.



Colorado Lining
INTERNATIONAL

(800) 524-8672

1062 Singing Hills Rd.

Parker, CO 80138

(303) 841-2022 FAX: (303) 841-5780

FOR SALE

NATION'S #1 VERTI-DRAIN distributor has
overload of trade-in Vertri-Drain's. Model 105.
145's priced from \$7,495. Completely rebuilt
with all new bearings & seals, large main bearing
updates, shock arms built-up and turned out to
tighter than factory specs, new slip clutch pto
shaft, and fresh paint. Also available '97
305.200 for \$13,400. Ship anywhere! Call
Commercial Turf & Tractor, 1-800-748-7497.

Spark plugs to engines! We have it all! E-Z - GO,
Yamaha & Melex golf cars factory parts distribu-
tor. Huge inventory. Low prices. We ship UPS
daily. Golf Coast Yamaha, 1-800-776-3440.

BOWIE 1500 TRUCK MOUNT HYDRO-SEEDER

On '76 international diesel truck.
155,000 on truck, excellent shape
\$12,000. Call for pictures 509-663-
3168.

HELP WANTED

Sports turf manager needed with 5yrs. expe-
rience in all phases of turf operations including
fertilization and irrigation. Must have knowledge
of equipment maintenance, excellent communi-
cation skills, decision making and record keeping
ability. Contact Unico Services at the University
of Miami @ 305-284-4366 or fax resume @ 305-
284-2865.

Professional Sports Turf Manager

Seeking a motivated individual to oversee daily
operation of high level East coast sports facility
field. Position requires turf grass experience as
well as business. Must have ability to relocate
and a desire for perfection. Minimum of a 2 year
degree in turf management with a background in
venue operations. Salary commensurate with
experience. Please send references to:

SportsTURF Magazine
Box 100MD

2101 S. Arlington Heights Rd. Ste. 150
Arlington Hts., IL. 60005

Sports Turf Manager

Primary responsibility is maintenance of the
Mississippi State University Varsity Athletic
Fields and surrounding areas.

Bachelor of Science degree in Turfgrass
Management is required. Must have a minimum
of four years experience as a Sports Turf
Manager (Top Position) preferably of Varsity
Athletic Fields. Must have a thorough knowledge
of all phases of Sports Turf maintenance opera-
tions with demonstrated excellent communica-
tion skills. Salary commensurate with experi-
ence. Applications accepted until April 1, 1999,
or until the position is filled. Submit application to
Mr. Charles Scoggins, Mississippi State
University, Box 9826, Mississippi State MS
39762. Mississippi State University is an
AA/EOE.

Irrigation Service Technician and Crew Leader

Montgomery Irrigation has immediate open-
ings for Technicians and Crew Leaders in
both Maryland and Northern Virginia. Ap-
plicant must have excellent communica-
tion skills and be committed to customer
service. Excellent compensation and bene-
fits. Call 800-538-2326 or fax your resume
to Chris 703-803-8003.

**Wanted-Experienced Sod Production
Manager** for prime 250 acre farm located in
northern Colorado. Looking for quality, long-
term, detail-oriented person. Please fax resume
to 303-776-2993 for consideration.



TurfcO Helps You Build A Turf That Gets Noticed.

TurfcO offers you a strong team of turf building equipment. They're the fastest and most versatile equipment to let you build hardier and healthier turf. Your sports fields become safer to play on and easier to maintain. Originators of Mete-R-Matic® top dressers in 1961, TurfcO's professional equipment gives your field a look that gets noticed.

Economy Aerator

Now you can afford to breathe life into any sports field. This low cost, 62" aerator has no hydraulics or mechanical linkages for easy use and low maintenance. Hooks up to any vehicle in seconds.

Precision Top Dresser

Fast, uniform, versatile. Patented chevron belt lets you handle top dressing, lime, crumb rubber, gypsum, calcine clay, compost and even overseeding with precision. Level fields and amend soil consistently.

Large Area Top Dresser

Large, 4 cubic yard capacity with patented chevron belt applies material with precision. Top dress from 1/32" to 6" to quickly handle large areas. Material conveyor and spinner attachment for added versatility.



For details and the name of your local dealer, call

1-800-679-8201

TurfcO Manufacturing Inc.
1655 101st Avenue Northeast
Minneapolis, MN 55449-4420

*Choice Performers,
Choice Fields.*

TURFCO

Good Idea for Bad Soil

by Dr. Dave Minner

We just built a sand-based soccer field and it was sodded with local sod that contains a heavier soil than the field. The field drains well, but the surface remains too soggy when we have games within a day or two of rain. We aerified and topdressed for the first time at the end of the fall soccer season. What can we do to prevent this soggy surface on our new sand-based field?

When you spend the money to build a rapid-draining, sand-based field, you certainly don't expect to deal with drainage problems, especially in the first year.

Many of the sand-based systems use a USGA-type sand. It's then recommended to choose a sod with the same sand particle size. It's very unlikely that you will find a sod grown on soils that meet the USGA criteria for particle size (approximately 92% sand).

In fact, I have topdressed sod with a USGA-type sand and then harvested it from the sod field to place it on a USGA-type sand-based field. From an agronomic view, this works quite well. Roots establish without any layering, and rapid drainage through the sod layer prevents any soggy conditions of the sod.

However, these sands often have a medium to low coefficient of uniformity (CU = 1.8 to 2.4), and surface stability is lacking. In most cases, you end up using the sandiest sod you can find within a 100-mile radius of your sports

field.

Try to locate a sod that has 70% to 85% sand, and a silt to clay ratio of less than 2:1. Sod with less than 60% sand often holds too much water near the surface, and this can result in a soggy surface. Sod with 70% to 85% sand will have more surface stability, and it will absorb water very quickly.

Core aerification and sand topdressing will be the most effective means of reducing soggy surface conditions caused by laying a heavy soil sod over a sand-based root zone. Coring and topdressing with sand will bury the original soil layer that was attached to the sod.

It's important to develop a management strategy that removes the heavy soil layer from the field. As a target, you should try to remove at least 25% of the sod/soil layer during the first two years after the sod is laid. hollow coring and removing the cores from the field before topdressing will accomplish this task.

Since your goal is to mine out the sod layer, it will only be necessary to cut a shallow core. Remove cores that contain the heavy sod layer. This is easier said than done, because there is not any really good equipment for collecting cores on grass that is mowed at a two-inch cutting height.

In fact, I challenge the equipment industry to develop a good core aerifier attachment that removes cores from athletic fields. Sweepers can be used, but they tend to break up the cores

and redistribute the bad soil back to the field. Even on native-soil fields, there is great need to be able to remove cores so that topdressing can quickly build up a sand layer.

Figure 1 gives you an idea of how much coring you will need to do to remove a sod layer. My target on sand-based fields is to remove 25% of the sod layer within two years of sodding.

Start as soon as rooting is stable enough to allow coring that won't tear up the sod. Core as often as possible, but allow sufficient recovery time before games. Heavy coring will temporarily reduce surface stability, especially coring on two-inch centers.

If you remove cores on three-inch centers, it will take nine passes to meet your goal of removing 25% of the sod layer in two years. This may be more coring than you're accustomed to, but it's necessary to avoid a soggy surface when heavier sod is laid over a sand-based field.

You can also use the table to determine how much core removal is necessary to mine out 50% of a native-soil field and replace it with good topdressing sand. □

David D. Minner, Ph.D., is an associate professor with the Department of Horticulture at Iowa State University. He serves on STMA's Certification Committee. Send your questions to Dave at: ISU, Hort. Dept., Ames, IA 50011; or call: (515) 294-2751, fax: (515) 294-0730, or e-mail: dminner@iastate.edu.

Figure 1. Amount of coring required to remove various amounts of soil or sod from a sports field. Calculations are based on 0.5-inch diameter tines and 100% efficiency on successive passes over the field.

Core spacing inches	Number of holes /sq.ft.	Area removed with each coring %	50% removed	25% removed	10% removed
Number of passes over field					
2	36	12	8	4	2
3	16	6	18	9	4
4	9	3	32	16	6
5	6	2	50	25	10
6	4	1	72	36	15