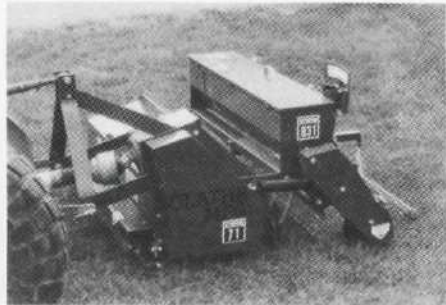


ROOKIES

PRODUCT UPDATE

AERATOR/POLYMER PLANTER



The Olathe Model 71/831 Aerator/Polymer Planter plants water-absorbing polymers that form a subsurface water reservoir where plant roots can absorb water as needed. The Model 71 Aerator cuts grooves in the ground with rotating blades, then the Model 831 Polymer Planter deposits the polymers into the grooves through stationary planter blades. A 48-x-36-inch

drag mat then covers the slits with soil.

The aerator has 48 blades on six-inch centers, a 48-inch swath, and is PTO-powered with a tractor of 40-hp or more with a three-point hitch. It features heavy-duty steel construction. Maximum blade depth is 2-1/2 inches.

The polymer planter is ground-powered. It features heavy-duty steel construction, a three-point Category One hitch, and eight blades on six-inch centers. It has a 48-inch swath, a polymer hopper capacity of 150 lbs., sight glass, and eight feed chutes on plow blades. The feed rate is adjustable from 20 to 250 lbs. per acre.

OLATHE MANUFACTURING, INC.

Circle 256 on Postage Free Card

NUTRIENT MANAGER

The Turf Anser Management System by Karsten elevates spoon feeding of

turfgrasses to a new level. The on-site system of nutrient analysis and fertigation enables superintendents to correct deficiencies or prevent overfertilization.

A scanner reveals the nutrient content of turf tissue samples in minutes. The results are fed directly into a computer for analysis and comparison to desired levels. By identifying deficiencies or excess levels of nutrients, the amount of nitrogen, phosphorus, potassium, and micro/macro nutrients can be adjusted through fertigation. The four-pump fertilizer injector permits delivery of liquid nutrients into the irrigation water in precise amounts.

The computer can record nutrient levels for a large number of turf areas on the sports facility. The injector can be adjusted to fertilize specific areas according to their needs.

KARSTEN TURF COMPANY

Circle 257 on Postage Free Card

PUT THE BITE ON ALGAE!



The Activated Oxygen System
Kills Algae and Bacteria

- Breaks Up Stratification
- Distributes Oxygen Everywhere
- No Chemical Residue
- Reduces Suspended Solids
- Stops The Odor Cycle

Our engineered system treats poor water quality problems from bottom to top. Aeration systems increase dissolved oxygen. Ecopak™ adds the ozone bonus which puts the bite on algae and bacteria.

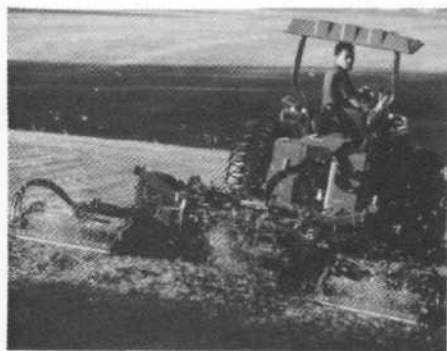


Contact FLEXALON INC. at (805) 541-2206 Fax (805) 541-2532 For Your Nearest Distributor

ROOKIES

PRODUCT UPDATE

GANG REEL MOWERS



Kubota's hydraulically driven Verti Reel gang mowers are available in five- and seven-gang models. The five-gang unit is designed for use with the Kubota L3250 Turf Special tractor. The seven-gang unit operates with the M4030SU Turf Special tractor.

A power pack mounted on the tractor's three-point hydraulic hitch enables the op-

erator to clearly view the reels as they cut. Locating the power pack on the three-point hitch enables the operator to turn lock-to-lock without the rear tires interfering with the frame.

The five-gang hydraulic Verti-Reel is two units in one: a quality-cut blade reel mower that easily converts to a vertical cutting unit.

Powerful direct-drive 30-inch reels cut a

swath of more than 11 feet.

The lightweight seven gang unit has eight-blade, 7-1/2-inch diameter reels that clip every 1.4 inch of turf. Reel speed is adjustable from 210 to 1400 rpm, independent of ground speed. Tire surface distributes weight over a larger area, resulting in less compaction.

KUBOTA TRACTOR CORP.

Circle 219 on Postage Free Card

SCOREBOARD

CLASSIFIEDS

CLASSIFIED ADVERTISING RATES: \$50.00 per inch payable in advance. One inch minimum. There are about 50 words per inch. Send copy with check for \$50.00 at least two weeks prior to issue date to: Golf & sportsTURF, P.O. Box 8420, Van Nuys, CA 91409. Blind box numbers are available. Special borders and rules will be billed at display rates. Classified ads are not commissionable.

STOLON PLANTING SERVICE

We plant LARGE turf areas mechanically.

From Sod to plant stolons in seconds.

FAST * ECONOMICAL * PROVEN

Call or write for brochure and specifications.

FLANNIGAN Stolon Planting Service

1462 Keys Place, Vista, CA 92083 OFF: (619)

630-8910 FAX: (619) 945-6783

STADIUM SUPERINTENDENT

For new 6,500-seat Major League Spring Training Complex with six full-size diamonds and a practice infield. Extensive knowledge of the methods, materials, and practices used in Florida turf and sports field maintenance for professional teams required. The ability to work under pressure, pay attention to detail, prepare budgets, plan strategically, assist in marketing and scheduling efforts also required. Ability to establish and maintain cooperative and effective relationships with general public, city officials and private groups crucial. BA/BS in related fields, five years supervisory experience in similar facility. \$36,150 - \$40,000 DOQ, plus liberal benefits package. Please send resume ASAP to the City of Homestead, Human Resources, 790 N. Homestead Blvd., Homestead, FL 33030. Deadline February 28, 1991.

ADVERTISER INDEX

Amiad	15	John Deere	6-7
Belton Industries	19	Lasco	11
C.C. Bucket Forks	22	Lidco	29
Cal Poly Pomona	32	Missouri Paint Co	13
Cushman Inc	3	O. M. Scott & Sons	21-21
Diamond Paint	29	Par-Ex	14
Fine Lawn Inc	5,25,39	Partac Peat Corp	32,42
Flexalon	41	Rain Bird	37
Four Star Services	19	Tee-2-Green	43
Fuerst Bros	27	Turf Seed Inc	44
International Seed	2	V.I.T Products	28
Jaydee Mfg	27	West Coast Netting	38

NOW AVAILABLE NATIONWIDE!
From Distribution Centers in
CA, FL, IL, NJ and TEXAS
with more being added

DIAMOND-DRY.
CALL TOLL FREE:
1-800-247-2326

NATIONAL DISTRIBUTOR:
PARTAC PEAT CORPORATION
Kelsey Park, Great Meadows, N.J. 07838
IN N.J. 908-637-4191

Circle 218 on Postage Free Card

I've read greens almost all my life, and PennLinks reads like the top line on a leader board.



Reading greens has been part of my job since I was nine years old. I've learned that it's easier to read and play a 'quick' green than a slow one because you can cut the break in half. This PennLinks green looks as good and fast as any I've seen on the tour.

Right away I notice the good color, smooth texture and grainless, upright growth ... just like a carpet!

For quick, consistent greens that play as good as they look, I recommend PennLinks.

If you play on PennLinks and still can't putt good, I suggest you see your local golf pro!

*Herman Mitchell,
Renowned Caddy*

PennLinks

One of the 'Penn Pals' from

Tee-2-Green Corp.

PO Box 250
Hubbard, OR 97302
1-503-981-9574
FAX 503-981-5626
1-800-547-0255

Circle 230 on Postage Free Card