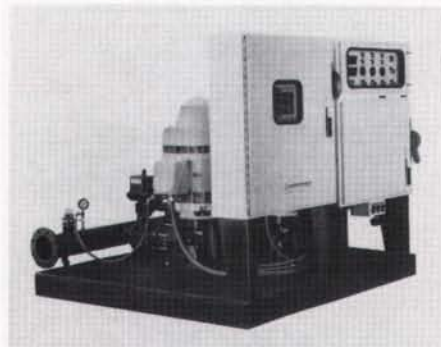


# ROOKIES

## PRODUCT UPDATE

### ENERGY-SAVING PUMPS



By varying pump and motor speeds, the Energy Saver pump station only uses as much electricity as is required to produce the necessary flow of water at a precise pressure. Pump stations are available with pumping capacities from ten to 10,000 gpm.

The pumps' unique drive systems enable the motors to be soft-started, reducing costly electrical demand charges and damaging water surges. The pumps maintain consistent irrigation line pressure, which increases the uniformity of sprinkler precipitation and reduces overwatering and underwatering.

#### WATERTRONICS

Circle 131 on Postage Free Card

### TOPDRESSER



The Olathe Model 23 Topdresser is a tow-behind unit that can be pulled by most utility vehicles and tractors. The maneuverable unit has a 60-inch swath, and evenly distributes topdressing using a high-speed brush to propel it to the base of the turf. Its ground-powered hydraulic drive reduces maintenance problems associated with

chains, sprockets, and drive mechanism.

Features include a continuous belt feeder with on/off valve at operator position, topdressing speed to eight miles per hour, and transport speed to 12 miles per hour. Its 23.5-cubic-foot capacity hopper

has an infinitely variable metering gate from closed to three-inch opening to regulate light or heavy applications. Six flotation tires ensure even weight distribution.

**OLATHE MANUFACTURING, INC.**

Circle 132 on Postage Free Card

## **Buckner** Pressure Regulating Cam Rotor . . .



**Products proven by time brought together with today's technology.**

- B** The same innovative pressure regulating device made specifically for water
- B** The same proven all bronze cam drive internal
- B** The same dependable piston valve principle

**\* Plus \***

- B** Heavy duty spring retract and sand-wiper seal
- B** Ability to manually turn-off or turn-on a single rotor in a block system
- B** Easy snap ring removal of internal for service
- B** Fulfills water management needs of:
  - low pressure
  - superior uniformity of coverage
  - low water consumption

## **. . . The Legend Returns**

4381 N. Brawley Ave, Fresno, CA 93722, (209) 275-0500, FAX (209) 275-3384

Circle 104 on Postage Free Card

May, 1990 31



# ROOKIES

## PRODUCT UPDATE

### MEASURING WHEELS

Three measuring wheel models, featuring all-metal frame construction, are available from Imler Industries, Inc.

The Original Measuring Wheel has a metal-housed, five-digit counter with a welded counter guard and easy reset button. The unit measures in one-foot increments. It has a cushioned handle, safe and chemically resistant pegs and counter arm, rounded edges for safety and durability, and a rubber tire with ball-bearings and metal hub.

The Folding Measuring Wheel has all the features of the original model, but includes a fold-down handle for convenient travel and storage.

Constructed of anodized aluminum, the Redi-Measure model measures in both feet and inches. It has a curved, telescoping handle with a vinyl pistol grip, a precision

counter with push-button reset, and a self-lubricating bronze bearing.

**IMLER INDUSTRIES, INC.**

Circle 133 on Postage Free Card

### POWER SWEEPER

With its 48-inch main broom and 24-inch side brush, the Armadillo power sweeper has a 62-inch swath and can cover 184,800 square feet per hour. Its 22-cubic-foot hopper holds up to 1,500 lbs. of debris and is available with hydraulically operated multi-level high-dump or ground-level low-dump.

The unit has a two-step dust-filtering/air-moving system for built-in prefiltering of large dirt particles and dual panel filters for collecting finer dust. The panel filters can be periodically cleaned with electric shakers that are operated from the driver compartment. Exhaust air is expelled



out the back of the unit, bypassing the operator and engine/radiator compartment.

A PowerSwing feature enables the sweeper's diesel or gasoline engine to rotate outside its body for bench-like, 360-degree maintenance access. Automotive-type rear wheel suspension, called PowerFlex, minimizes the jolts and vibrations for operator comfort and longer component life.

## GET THE POWER! TO DO IT RIGHT

GOLF COURSES,  
DRIVING RANGES AND  
BASEBALL FIELDS

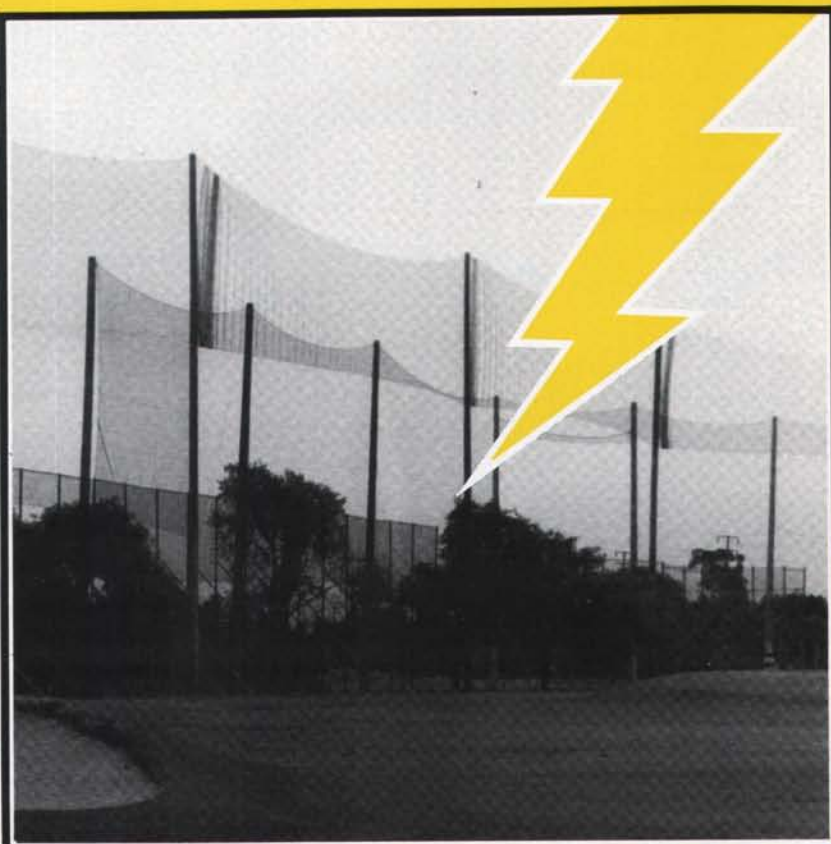
### OUR NETS MEET YOUR SPECS!

It takes a team effort to get a big project done right. At West Coast Netting our **POWER TEAM** makes things happen for you. With 35 years experience making net products we know how to design and build nets for every use and location. Our **POWER TEAM** can even do your complete turn key installation



anywhere in North America. Get the power to do it right, Join the **POWER TEAM**.

**WEST COAST NETTING** PO Box 728, Rancho Cucamonga, 714/987-4708 (800) 854-5741 (outside CA) FAX #714-944-7396



Santa Ana Country Club, Costa Mesa, Calif.



# ROOKIES

## PRODUCT UPDATE

PowerClimb, a feature consisting of oversized tires, a protected undercarriage, and extra ground clearance, enables the sweeper to travel over speed bumps, railroad tracks, and curbs.

**AAR MANUFACTURING GROUP**

Circle 134 on Postage Free Card

### FOUR-WHEEL UTILITY VEHICLE



Powered by a 16-hp, 440cc Overhead

Valve V-Twin Briggs & Stratton engine, the HX-4480F-B utility vehicle is designed for rugged use, high performance, and low maintenance. It features an electronic ignition, automatic transmission, automotive-style controls and steering wheel, hydraulic disc brakes, and more.

Options include dual fuel tanks, steel cab, turn signals, and hydraulic cargo bed.

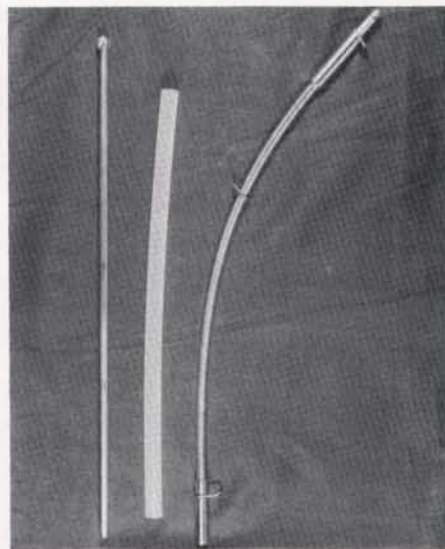
**HAUL MASTER, INC.**

Circle 135 on Postage Free Card

### TINE DRILL

The Tine Drill offers a fast, efficient method of removing soil plugs from any aerating tine. The unit consists of a solid drill rod with a 5/16-inch carbide tip, a flexible shaft with a 3/8-inch carbide tip, and a plastic sleeve.

The two different tip sizes ensure the



unit's ability to fit most tines. The flexible shaft allows for easy access to difficult tines.

**PLASTIC LAMINATES**

Circle 136 on Postage Free Card

## PUT THE BITE ON ALGAE!



The Activated Oxygen System  
Kills Algae and Bacteria

- Breaks Up Stratification
- Distributes Oxygen Everywhere
- No Chemical Residue
- Reduces Suspended Solids
- Stops The Odor Cycle

Our engineered system treats poor water quality problems from bottom to top. Aeration systems increase dissolved oxygen. Ecopak™ adds the ozone bonus which puts the bite on algae and bacteria.



Contact FLEXALON INC. at (805) 541-2206 Fax (805) 541-2532 For Your Nearest Distributor



# NO. 1 CHOICE OF TOP OPERATORS

## Model JD9-CT SPRAY GUN with Gauge Port

- Tapped at top for optional gauge to calibrate pressure settings at gun.
- Reliable, fully adjustable, built-to-last.



At Your Distributor or  
Call Us at (708) 593-6464

**ENCAP PRODUCTS COMPANY**  
P.O. Box 278, Mt. Prospect, IL 60056

Circle 137 on Postage Free Card

## ADVERTISER INDEX

Air-O-Lator	16
Airlake Aeration	19
Barebo/Otterbine, Inc.	17
Belton Industries	23
Bowie Industries	29
Buckner	31
Ciba Geigy Corp.	3
Conservation Technologies	16
Encap Products	34
Flexalon	33
Four Star Service	23
Growth Product Inc.	30
Hunter Industries	36
Kifco Ag-Rain	34
Lake Aid Systems	18
Lasco Industries	35
Mobay Chemical Corp.	6-7
Olathe Mfg. Co.	11
Partac Peat Corp.	19
Precision Small Engine	18
RainJet, Div of Hardie Irrigation	2
RainMaster	5
Rhone Poulenc Ag. Co.	13
Safety Storage	34
West Coast Netting	32

## SCOREBOARD

### CLASSIFIEDS

### Water-Reel Irrigation for Parks, Sportsfields & Nurseries



#### A self-traveling irrigation system

Kifco Water-Reels make portable irrigation easy.

The machines are simple to set up and operate unattended. They shut-off automatically when the sprinkler cart arrives back at the machine.

For more information call or write:



600 S. Schrader Ave.  
P.O. Box 367, Havana, IL 62644  
Phone 309/543-4425 • Fax 543-4945

Circle 120 on Postage Free Card

**CLASSIFIED ADVERTISING RATES:**  
\$45.00 per inch payable in advance. One inch minimum. There are about 50 words per inch. Send copy with check for \$45.00 at least four weeks prior to issue date to: Classifieds, Golf & SportsTURF, P.O. Box 8420, Van Nuys, CA 91409. Blind box numbers are available. Special borders and rules will be billed at display

advertising rates. Classified ads are not commissionable.

#### STOLON PLANTING SERVICE

We plant LARGE turf areas mechanically.  
From Sod to planted stolons in seconds.

#### FAST \* ECONOMICAL \* PROVEN

Call or write for brochure and specifications:

#### FLANNIGAN Stolon Planting Service

1467 Buena Vista Drive, Vista, CA 92083  
OFF: (619) 630-8910 - FAX: (619) 945-6783

**For Sale:** 1988 Kubota M4030 Tractor Loader w/72" bucket, 372 hours. Like new, \$16,000. David Vital, (401) 738-4880.

**For Sale:** 727 Howard Price 104" cut rotary mower with three decks. HP water-cooled diesel engine. Hydrostatic drive, rear steering. Mowing capacity 5.3 acres/hr. Belt PTO to front deck hydraulic. Drive side Front 60" deck can be operated independently of side deck. \$9,000. Sprinklers: 65D Rain Birds. 190, 195, and 865 Buckners. Mrs. Davids, (707) 527-5640 or (707) 544-5730.

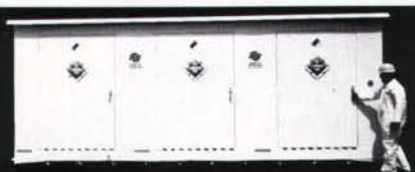
#### CONSTRUCTION AND RENOVATION OF SPORTSTURF AND GOLF FACILITIES

Quality construction of sportsfield and golf greens since 1954. Serving the Midwest and Southeast States. Ask for Roy Zehren, Natural Athletic Turf, Inc., 11040 N. Buntrock Ave., Mequon, WI 53092. (414) 242-5740.

### Hazardous Chemical Storage Buildings



- Comply with Federal, State and Local Regulations
- Relocatable Turnkey Prefabricated Buildings • Fire Protection
- Accommodates up to Forty 55-Gallon Drums • Storage Capacity up to 10 Tons
- Available in 22', 15', 10' 8" and 6' Sizes
- One Year Warranty



2380 South Bascom Ave.,  
Campbell, CA 95008  
408/559-3901 Fax: 408/559-3218  
Toll Free: 1-800/344-6539

Circle 121 on Postage Free Card



# The advantage of having everything in one place is obvious.

**Insert fittings**—Full line of PVC,  
 $\frac{1}{2}$ "–4", plus nylon.

**Unions**—All sizes,  $\frac{1}{2}$ "–3"

**Compression fittings**—  
 $\frac{1}{2}$ "–6"

**Easy-Fix Repair  
Couplings**— $\frac{1}{2}$ "–4",  
make repairs and  
alterations simple.

**Swing Joints (Unitized,  
Made-To-Order and Assembly Kit)**—  
perfect solution to setting heads at  
exactly the right height.

**Swivel Joints**— $\frac{1}{2}$ ",  $\frac{3}{4}$ " and 1", for  
open discharge sprinkler systems.

**Schedule 40 fittings**—full line  
of  $\frac{3}{8}$ "–8", ideal for irri-  
gation and general use.

**Schedule 80 fittings**— $\frac{1}{4}$ "–8",  
heavy walled for high pressure  
industrial applications.  
(CPVC also available.)

Special fittings and  
fabricated fittings available.

**And this is obviously the place.**

## **LASCO**

**the strongest link**

3255 E. Miraloma Ave.  
Anaheim, CA 92806  
(714) 993-1220  
FAX (714) 524-0232

Seven warehouses nationwide. Sales offices in major cities.

Circle 102 on Postage Free Card