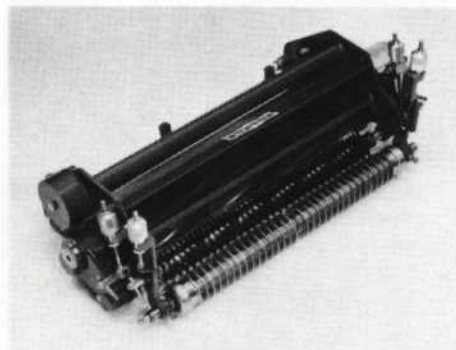


# ROOKIES

## PRODUCT UPDATE

### GREENS CONDITIONER REEL



To reduce thatch and runner problems and achieve healthier, truer greens, Bunton has introduced a Greens Conditioner Reel for its Triplex Greensmower.

Optimized spacing of 273 vertical knife blades in a helical pattern on 1/2-inch centers and the heavy-duty gear motors assure a high frequency of clip while conditioning the greens. Depth adjustment of the reel is infinitely variable within its range to assure precision greens care.

The Greens Conditioner drive features a steel gear to eliminate problems associated with reels which use belt-drive systems. To minimize spare parts inventory, many of the components on this unit are interchangeable with components on the Bunton walking greensmower.

**BUNTON COMPANY**

Circle 120 on Postage Free Card

### PLUG PULVERIZER



The Model 56 Plug Pulverizer attachment of the Toro Groundsmaster 300 series helps pulverize and top dress after aeration using the close center coring aerators. Only rubber fingers come in contact with the ground, as opposed to steel hammer blades. Plugs are lifted off the turf and bat-

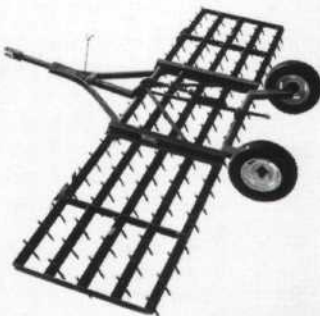
tered against the frame before passing by stationary cutters and through a screen to pulverize in one pass.

Features include outfront location with a 60-inch swath that processes the plugs before the operating implement runs over them. It is ideal for use on large areas such as golf courses, sports fields, and parks.

**OLATHE MANUFACTURING, INC.**

Circle 121 on Postage Free Card

### TILLAGE TOOL



The Harogator spike-tooth tillage tool levels, mulches, and agitates soil. It can be used for landscaping and maintenance chores such as seedbed preparation, leveling, resodding, preparing golf courses for seeding, smoothing baseball diamonds, parking lots, and horse exercise yards, and incorporating herbicides or fertilizers.

Engineered with five-angle iron crossbars which push soil ahead, the Harogator is a wheel-type tool which levels fields or seedbeds while its angled iron edges help break up trash and surface chunks. The dragging action of the crossbars also distributes this rougher-textured material. The unit's spiked teeth mulch and agitate soil at planting depth and break up large clods. It is available in sizes from eight feet in three-point-hitch or pull-type configurations.

**UNVERFERTH MFG. CO., INC.**

Circle 122 on Postage Free Card

### MULCH BLANKET

The PS100 manufactured mulch blanket contains no netting, which can bind up in mowing equipment. Instead, the organic fibers of the blanket are bonded together, using a high-strength, flexible adhesive.

The mulch blanket comes in roll form and is used for establishing grasses, legumes,

wildflowers, and ornamental plants. It has excellent erosion control characteristics. The rolls are lightweight and easily handled.

Each blanket is five feet wide by 90 feet long, and covers 50 square yards. After ground preparation, seeding, and fertilizing, the blankets are rolled out and fastened to the soil, using standard sod staples or wooden stakes.

**PROSEED USA**

Circle 123 on Postage Free Card

### TURF GROOMERS



For greater strength and durability, the Jacobsen Turf Groomer has a large front roller and large, thick six-point cutting blades. Previously designed for greens conditioning, a model for fairway use has also been introduced by the company. Two blade spacings are available.

The unit's tough one-inch drive belt is protected from debris by a sealed housing. The cover can be removed for inspections and adjustments, and a double pin clutch is standard.

To skip grooming, the quick up/down blade adjuster can raise or lower the reel up 3/8-inch in 1/8-inch increments. A micro-depth adjustment dial fine tunes cutting heights without tools, and anti-scalp gauge wheels prevent the marking of turf.

The intersecting action of the Turf Groomer's roller and knives produce a fine quality cut. The roller's grooves have beveled edges that help lift horizontal grasses on greens and fairways. To slice the grass blades before they lie down, the knives rotate through slots in the roller. This cutting action promotes vertical growth with more leaf surface for better photosynthesis, encouraging deeper roots and improved stress tolerance.

**JACOBSEN DIVISION OF TEXTRON, INC.**

Circle 124 on Postage Free Card



# ROOKIES

## PRODUCT UPDATE

### RIDING CORE AERATOR



With a 52-inch swath and 60,000-square-foot-per-hour capacity, the Ransomes Riding Core Aerator is ideal for aerating large greens and fairways. Its wide, smooth tires and three-wheel design distribute weight evenly, minimizing turf marking.

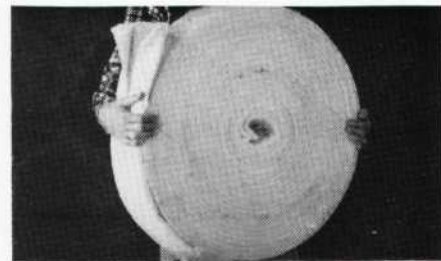
Powered by a 20-hp Kohler Magnum gasoline engine, the aerator has plenty of power for climbing long grades. Core spacing is available from one to six inches, without stopping the machine. A variety of

tine diameters, from 1/4 to 3/4 inch, are available.

The machine's free-floating tine system helps assure high-quality aeration. The system cleanly removes cores and allows tight turns during maneuvers. Dual floating aerator heads with Tine-Saver design follow the contours of the turf and help absorb shocks when tines hit obstructions, extending the life of the tines.

**RANSOMES, INC.**

Circle 125 on Postage Free Card



Made from high-density polyethylene, the patented flow-through core offers excellent crush resistance, compressive strength, and recovery.

**EXXON CHEMICAL COMPANY, GEOTEXTILE DEPARTMENT**

Circle 126 on Postage Free Card

### DRAINAGE COMPOSITE

Tiger "Edge" Drain is a new drainage composite for use in control of unwanted groundwater and seepage in subsoil drainage applications. It is composed of a three-dimensional core from Tiger Drain prefabricated drainage structure and a non-woven geotextile which completely wraps its six-inch core.

### SOIL AMENDMENT

Gro-Safe, a specialty carbon, is a basic soil amendment for control of a wide range of herbicides and pesticides. In addition, it can be used extensively to protect and



Visit Booth #222  
At GCSAA Show  
Feb. 24-26

## The pros say we dress better than the copycats.

The Bannerman TURF-TOPPER has been the world's leading topdresser for large turf areas for the past 5 years. **TURF-TOPPER is the original.** The other fellows sell one which resembles it, but the pros say "Ours is best". Perhaps we can arrange a demonstration for you through our nearest distributor (U.S.A. or Canada). Ask for complete details.



Gordon Bannerman Ltd • 41 Kelfield Street, Rexdale, Ontario M9W 5A3  
Telephone 416-247-7875

## How to make your career grow.

Join PGMS. GROUNDS MANAGER: The Society treats your career with loving care with • the Annual Conference and Trade Show • the monthly newsletter • peer review to earn you the title of Certified Grounds Manager • surveys on practices • \$5,000.00 accident and dismemberment insurance • awards for achievement • workshops • discounts on rental cars and publications • Estimating guide, Management Guidelines, Forms and Job Descriptions. Join today. Your career will take root and grow.



Clip and mail to **PROFESSIONAL GROUNDS MANAGEMENT SOCIETY**, 12 Galloway Avenue, Suite 1E, Cockeysville, MD 21030 or phone (301) 667-1833

TO: PROFESSIONAL  
GROUNDS MANAGEMENT  
SOCIETY  
12 Galloway Avenue  
Suite 1E, Cockeysville, MD 21030

YES! I want to give my career a professional edge. Please send more information on what PGMS can do for me.

Name \_\_\_\_\_  
Company \_\_\_\_\_  
Street \_\_\_\_\_  
City & State \_\_\_\_\_ Zip \_\_\_\_\_  
Area Code and Telephone Number \_\_\_\_\_



# ROOKIES

## PRODUCT UPDATE

stimulate new plant growth, and can also be employed as a decontaminant for spills and an agent for cleaning equipment.

The broadest range of application is in turfgrass management, such as golf courses and sports complexes, and in nurseries and landscaping.

Gro-Safe can be used in turfgrass management following soil sterilization or when herbicides are overapplied or misapplied. It also reduces turf damage due to hydraulic oil or herbicide spills. In landscaping and nursery use, it improves transplant survival rates, increases germination of directly seeded ornamentals, and protects herbicide-sensitive ornamentals from phytotoxic effects.

**AMERICAN NORIT COMPANY, INC.**

Circle 130 on Postage Free Card

Runoff- and effluent-fed ponds are also treatable with the system. Golfwater aeration systems are adaptable to ponds of all sizes and depths. Environmentally compatible covers are available for the units.

**AERATION INDUSTRIES INTERNATIONAL, INC.**

Circle 131 on Postage Free Card

## ADJUSTABLE ARC SPRINKLER



Designed for sports fields, golf courses, cemeteries, and other large turf areas, the I-40-ADS adjustable arc sprinkler can be set at any arc between 40 and 360 degrees. Arc adjustment can easily be made with the water on or off.

For installations that require full-circle coverage, this sprinkler is also available as Model I-40-36S, a fixed 360-degree full-circle.

Both models are supplied with five interchangeable nozzles to vary the radius and discharge rate. The radius can be varied from 45 to 67 feet, and the discharge can be adjusted from seven to 25.3 gpm.

These sprinklers have safety-cushioned rubber covers and reliable stainless-steel risers. Vandal-resistant features include a small 1 5/8-inch exposed surface diameter and heavy-duty retraction spring. A drain check valve with up to 15-inch change in elevation is also standard.

**HUNTER INDUSTRIES**

Circle 132 on Postage Free Card

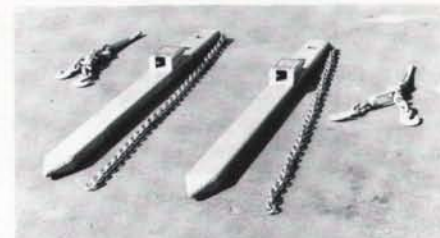
## AERATION SYSTEM



The Aire-O2 Golfwater aeration system is designed to control water quality problems and restore water quality in golf course ponds. By thoroughly aerating and circulating pond water, the system controls algae, scum, stagnation, and their accompanying odors.

These surface-mounted aspirator aerators introduce air into water and ensure even distribution of oxygen-bearing air through strong horizontal mixing. The increased dissolved-oxygen level in the water enhances bacterial activity that speeds the breakdown of organic materials.

## From Bucket Loader to Versatile Fork Lift in less Than 5 Minutes!



C.C. Bucket Forks can change a bucket-loader into a multi-purpose lifting vehicle. No drilling, welding or bolting.

**Easy-on, easy-off installation  
—in less than 5 minutes.**

Made in the U.S.A. Canadian Patent No. 1,103,622  
U.S. Patent No. 4,242,035



**A NEW CONCEPT IN MATERIAL HANDLING!**

**CHECK THESE SPECIAL FEATURES!**

- Easy storage—tines are separate and flat
- Transports easily—no awkward angles
- Easy to handle—each fork weighs only 50 pounds
- Universal—fits most popular brands of loader buckets
- Easy-on, easy-off installation—in less than 5 minutes!
- Ideal for farm use or at construction sites
- Handles most materials—load capacity is 3,000 pounds
- Full money back guarantee!

# \$399.00

(delivered anywhere in U.S.)

Send your check  
or money order to:

**CC<sup>®</sup>**  
**C.C. Bucket Forks, Inc.<sup>®</sup>**  
P.O. Box 3796, Orange, CA 92665

In Calif. call collect: Toll-free, except in Calif.  
**1-714-637-4645 1-800-854-3532**

**CA RES. ADD 6% SALES TAX**  
Copyright 1981 C.C. Bucket Forks, Inc.

Circle 134 on Postage Free Card



# ROOKIES

## PRODUCT UPDATE

### BREAKAWAY BASES

Soft Touch and Stay Down breakaway bases are designed to help sliding players avoid injuries. These bases function like

conventional stationary bases during all aspects of regular play. However, when a runner slides out of control, which is when most injuries occur with a standard base, these bases will flex and disengage from their mount.

Soft Touch is designed for permanent in-ground installation and Stay Down is designed to be easily moved with a surface mount system.

**BEACON PRODUCTS CO.**

Circle 135 on Postage Free Card

# SCOREBOARD

## CLASSIFIEDS

**CLASSIFIED ADVERTISING RATES:** \$45.00 per inch payable in advance. One inch minimum. There are about 50 words per inch. Send copy with check for \$45.00 at least four weeks prior to issue date to: Classifieds, sportsTURF magazine, P.O. Box 8420, Van Nuys, CA 91409. Blind box numbers are available. Special borders and rules will be billed at display advertising rates. Classified ads are not commissionable.

### SPORTSFIELD DESIGN, RENOVATION, AND CONSTRUCTION

Whatever your sport, whatever the level of play, and wherever the location, Sportsfield, Inc., can provide all the services required to meet your needs. Our team of experienced personnel can design, renovate or construct your playing fields. Do it right the first time! Call or write for our brochure, P.O. Box 615, Blue Island, IL 60406, (312) 371-0917.

**GOLF COURSE SPRINKLER HEAD RECONDITIONING.** Rain Bird, Toro, etc. Reconditioning accomplished in our 14,000 sq. ft. facility. We buy usable cores. Call, mail or Fax (602) 253-1701, Golf Course Specialists, 1440 S. 23rd Ave., Phoenix, AZ 85009. Ph. (602) 253-8120.

### STOLON PLANTING SERVICE

We plant large turf areas mechanically. From Sod to planted Stolons in seconds. FAST — ECONOMICAL — PROVEN. Call or write for brochure and specifications (TF).

**FLANNIGAN Stolon Planting Service**

301 La Salle Ave., Ventura, CA 93003  
(805) 644-6630

## Do Not Read This!

Providing you have time and seed to waste.

But if you've read thus far, then give us a call or write for information on our pregermination systems. We provide the equipment (4 models) and technical information that will allow you to pregerminate turfgrasses on your own.



Pregermination can provide increased yields, reduced erosion, accelerated establishment, as well as reduced time, cost, and more. (Why would anyone wait the normal time for seed to sprout?)



2095 Euler • Brighton, MI 48116

For more information, call

**(313) 227-5066**

Circle 114 on Postage Free Card

## ADVERTISER INDEX

Bannerman, Gordon Ltd . . . . .	32
Barebo, Oterbine . . . . .	11
Brown Mfg. Co . . . . .	17
C.C. Bucket Forks . . . . .	33
Encap Products Co . . . . .	25
Fine Lawn Research, Inc . . . . .	2-3
Four Star Agricultural Products . .	21
International Seeds, Inc . . . . .	7
International Golf Course Conference and Show . . . . .	19
Lasco . . . . .	13
Line-Ward Corp . . . . .	21
Liquid Sod . . . . .	34
Locke Mowers, Inc . . . . .	29
Missouri Paint Co . . . . .	25
Modus-T . . . . .	5
Partac Peat Corp . . . . .	34
ReelSharp U.S.A . . . . .	18
Riverdale Chemical Co . . . . .	35
Toro Company, The . . . . .	36
Turfco . . . . .	23



THE PROFESSIONAL'S CHOICE  
... SINCE 1922

THE BASEBALL DIAMOND MIXES USED BY OVER 50 PROFESSIONAL TEAMS PLUS TOWNS AND SCHOOLS ACROSS THE U.S.A. AND CANADA. SPECIAL MIXES FOR INFIELDS, PITCHER'S MOUNDS, HOMEPLATE AREAS, & WARNING TRACKS.



**REDUCE RAIN DELAYS!**  
WITH

THE REDDER, LESS DUSTY  
SOIL CONDITIONER & DRYING AGENT  
THAT RETAINS MOISTURE  
IN HOT WEATHER

**PARTAC®  
GREEN SAND  
FOR DIVOT REPAIRS**

The Ultimate Solution to Unsightly  
Divots at Televised Golf Tournaments  
and other Sports Events!

AVAILABLE NATIONWIDE  
**1-800-247-2326**

IN N.J. 201-637-4191

**PARTAC PEAT CORPORATION**  
KELSEY PARK, GREAT MEADOWS, N.J.  
07838

Circle 115 on Postage Free Card

**PARTAC®  
GOLF COURSE  
TOP-DRESSING**



**AMERICA'S PREMIUM  
TOP-DRESSING**  
HEAT TREATED

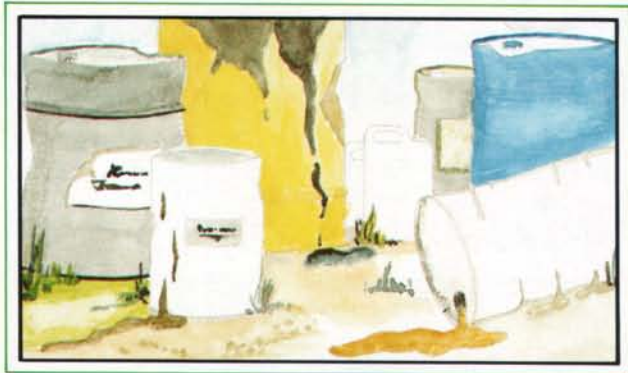
CONTROL THATCH,  
PROMOTE HEALTHY TURF  
& SMOOTH PLAYING SURFACES





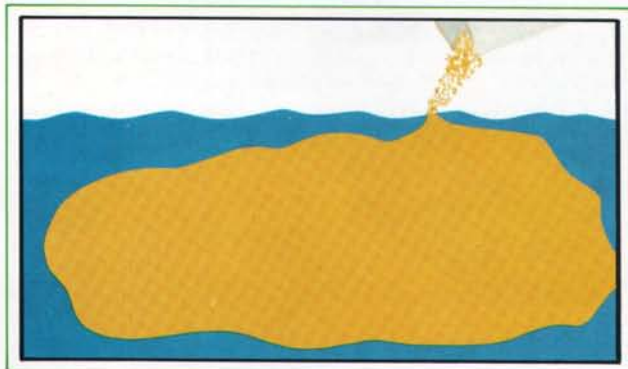
# INTRODUCING **TRIAMINE™ II W.S.** Broadleaf Weed Killer

## OLD PROBLEM...



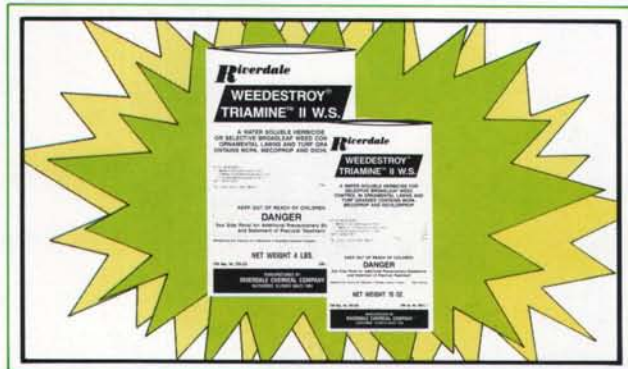
If you're handling liquid broadleaf weed control herbicides, you know that meeting today's regulatory requirements for proper rinsing and disposal of empty drums, cans and jugs are a real problem....

## NEW PRODUCT?



Now there's **TRIAMINE™ II W.S.**, the new water soluble powder containing the acids of MCPA, Mecoprop and Dichlorprop. Packaged in convenient 4 pound and 15 ounce fiber canisters, our exciting new product puts an end to your old concerns over container storage and disposal. In addition to easier container disposal, **TRIAMINE™ II W.S.** takes up less space in your warehouse, is easier to transport and won't freeze.

## GREAT SOLUTION!



**TRIAMINE™ II W.S.** goes into solution instantly and gives you effective, economical weed control on a wide range of troublesome broadleaf weeds.

A single 4 pound fiber canister of **TRIAMINE™ II W.S.** contains enough herbicide to treat an acre of cool season turf. For a small job, use the 15 ounce size that treats 10,000 sq. ft. And, when used on some warm season grasses, you will be able to treat even larger turf areas.

**NEW TRIAMINE™ II W.S.**  
From  
**RIVERDALE CHEMICAL COMPANY**  
“New Solutions For Old Problems”

Stop by and see us at the GCSAA Show, Orlando, Florida—Booth 802

### OR CONTACT US AT:

425 West 194th Street, Glenwood, IL 60425-1584 708-754-3330 800-345-3330  
Circle 118 on Postage Free Card