

# EVENTS

## CALENDAR

### SEPTEMBER

**13-15** Virginia Turf Field Days, Virginia Tech Turf Research Center, Blacksburg, VA. Contact: J. R. Hall, professor of turfgrass management, College of Agriculture, Virginia Polytechnic Institute, (703) 961-5797.

**14-16** The Trade Show - Atlantic City, sponsored by the New Jersey Association of Nurserymen, Inc., Atlantic City Convention Center. Contact: S. Howard Davis, NJAN, 65 S. Main St., Bldg. 1, Ste. 3, Pennington, NJ 08534, (609) 737-0890.

### OCTOBER

**4** 24th Annual Turfgrass Equipment, Irrigation and Supplies Field Day, sponsored by the GCSA of New Jersey, Rutgers Stadium and Golf Course, River Road, Piscataway, NJ. Contact: Dr. Henry Indyk, (201) 932-9453.

**9-12** Florida Turfgrass Annual Conference and Show, Curtis Hixon Convention Center, Tampa, FL. Contact: Florida Turfgrass Assoc. Inc., 302 S. Graham Ave., Orlando, FL, (407) 898-6721.

### NOVEMBER

**8-11** Oklahoma Turfgrass Conference, Tulsa Convention Center, Tulsa, OK. Contact: Dr. Michael Kenna, Dept. of Horticulture and Landscape Architecture, 360 Agricultural Hall, Stillwater, OK 74078, (405) 624-5414.

**13-15** Southern Turfgrass Conference and Show, Montgomery Civic Center, Montgomery, AL. Contact: Dr. Jeff Krans, (601) 325-2311.

# THE FRONT OFFICE

## OPINION PAGE

### SECOND GUESSING IS DANGEROUS



Recently I was surprised to hear that three capable sports turf managers lost their jobs. Two are stadium groundskeepers and one is a golf course superintendent. In each case management made the change after calling in consultants to solve problems that they felt the sports turf manager couldn't handle. Management simply lost confidence in the people they had hired after talking with consultants.

In my opinion, these individuals got caught in the middle of a debate that they could have avoided. They aren't alone either. There were a few other close calls during the past year when groundskeepers

and superintendents had to defend themselves against the comments of consultants. It can happen to just about anyone in our business.

The reason I bring this up is not to condemn consultants—they do what they are paid to do. The consultants involved are highly experienced and highly regarded. They were hired by management to give their opinions and they did as they were asked. But there were definite flaws in the way their suggestions were presented to and received by both management and the sports turf manager.

First of all, rank has its privileges. The manager of a golf course, stadium, university campus or park has the authority to call in a consultant anytime he wants a second opinion about a problem. His job is to delegate authority AND to check that this authority is properly used.

It is the sports turf manager's job to respect this authority and report back to his superior about progress and problems. If he is stumped by a tough problem, and he has already sought advice from other sports turf managers, extension agents, and distributor tech reps, he should tell his boss he needs help. In other words, the sports turf manager should initiate the request for a second opinion.

The trouble starts when someone complains about turf conditions directly to management. The best sports turf managers stay in close contact with coaches, players, their greens committee and other influential people so that they can handle problems without involving the facility manager. That's the way it's supposed to work. The facility manager isn't supposed to handle turf and landscape problems on a day-to-day basis, the sports turf manager is.

When a turf consultant is brought in, he should make an effort to learn the turf manager's side of the story before he makes any recommendations to the facility manager. More importantly, the sports turf manager should be open to suggestions and show his willingness to cooperate. If he won't listen to the consultant, the the facility manager is forced to decide who is right on his own. This is when things enter the danger zone and "second guessing" begins.

If the sports turf manager is cooperative, the consultant and the stadium manager should involve him (or her) in most discussions. In fact, the best situation would be to hire a consultant to work directly with the turf manager, not the facility manager.

Facility managers who insist on going around their turf manager when they have serious problems may never solve them. The best sports turf managers will not work for facility managers who do not respect their knowledge and ability. And they also know which consultants are on their side and which are always on management's side.

Studies have shown that most people fail because they lack "people skills," not because they lack technical skill. The facility manager, the sports turf manager and the consultant must work together, communicate with each other and respect each other's position. They can't function autonomously by second guessing each other.

At the present time it seems that when things get down to second guessing, it's the sports turf manager who loses out. Therefore it is mainly to his advantage to be cooperative when a consultant steps onto his fields or golf course. Once it gets to second guessing, there's nothing but trouble.

*Bruce F. Shank*

# THE EXTRA POINT

## STMA NEWS

### FROM THE PRESIDENT

In traveling around the country to take part in STMA's various functions, I hear one recurring theme, "I need help!" We need help with infields that are too hard and won't drain. We need help with soccer fields that are overused. We need help with irrigation schedules and just about every aspect of our jobs. Many sports turf managers are at their wits end and don't know where to turn!

One of the easiest ways to find the answers to many of the problems and challenges we all face is through our professional organizations, such as STMA. STMA is not just a set of initials or some unknown entity out in the wilds of California. It is a group of people all dedicated to helping each other for the improvement of sports fields everywhere.

The largest percentage of our members are park and school facility managers and workers. These are the people who have to struggle daily with meager budgets, limited resources and an unceasing demand for their facility. To cope, some have developed ingenious methods that could be put to use on fields across the country. Meanwhile, others are desperately seeking information about such methods. It helps just to know you are not alone and that somebody else is faced with the same problems.

By being involved in STMA, we can share our problems, AND our solutions. I urge those of you that have come up with unique solutions to large and small problems to write the STMA office and let us know. There is a saying, "Knowledge that is not shared is worthless." If you are looking for answers, become involved in the association, attend the regional the national meetings, and use the membership directory to contact fellow members. The STMA membership directory gives you access to everybody from the "Big League" stadiums to park districts, universities and public schools. You'll also find many of the top turf educators and extension agents in the country.

I can speak from my own experience as a university grounds manager that my time talking to other members of STMA has been well spent. I have learned a great number of things from other grounds managers and have put these concepts and ideas to work. But the only way you can have the same experience is to support STMA in its mission of education and to actively share your knowledge.

Mark Hodnick, California State Polytechnic University.

### ANNUAL MEETING SET FOR DODGERTOWN

STMA is pleased to announce that its 1989 Annual Meeting and Conference will be held January 13-15, 1989, at Dodgertown, the spring training facility of the Los Angeles Dodgers in Vero Beach, FL.

This will be the first annual meeting and conference STMA has ever held on its own and promises to be one of the best. Dodgertown is a magnificent facility with all of the comforts and amenities. There is on-site lodging and dining facilities and a golf course in addition to the professionally-maintained baseball complex.

Vero Beach is located within easy reach of many of Florida's other attractions, such as Disney World, the Kennedy Space Center and Sea World. The spring training facilities of many other Major League Baseball teams are within a few hours drive.

The conference program will include presentations by experts from all the different segments of the sports turf industry, demonstrations of new and different approaches to sports facility maintenance and plenty of opportunities to discuss problems with other sports turf managers. Manufacturers from across the country will exhibit and demonstrate their products designed specifically for sports turf managers during the trade show.

You can have direct input into association operations during the business meeting and elect the officers for 1989. The Annual Awards Banquet will feature a major keynote speaker as well as the presentation of STMA scholarships, the Baseball Diamond of the Year Award, and several other recognitions. The banquet will provide a great opportunity to relax and enjoy the fellowship of your colleagues, friends and families.

The STMA staff is working very hard right now finalizing the details for the conference. In the very near future, all members of STMA will be receiving the official program announcement and preregistration information. It will include information on discount airline fares and hotel accommodations.

If you are not a member of STMA or would like more information about the conference, please contact the STMA office, 400 N. Mountain Ave., Suite 301, Upland, CA 91768, (714) 981-9199.

We are sure that this conference will be one of the most informative, educational and entertaining. Make plans now to attend.

### NORTHEASTERN INSTITUTE LAUNCHED

The first Northeastern Sports Turf Institute, held in July at Holy Cross College in Worcester, MA, attracted more than 125 sports turf managers and 30 exhibitors. The meeting was sponsored by STMA and the Professional Grounds Management Society.

The educational sessions offered a broad range of topics from field painting to turfgrass identification. Outside demonstrations gave conferees a first-hand look at the latest equipment and methods developed for the sports turf industry.

The one-day event will be held each year, as are similar institutes in Chicago, IL; Pomona, CA, and the Southeast. The STMA board hopes to develop a fifth institute for the Northwest. "We are trying to provide needed educational conferences and exhibits on a regional as well as a national basis," explains President Mark Hodnick.

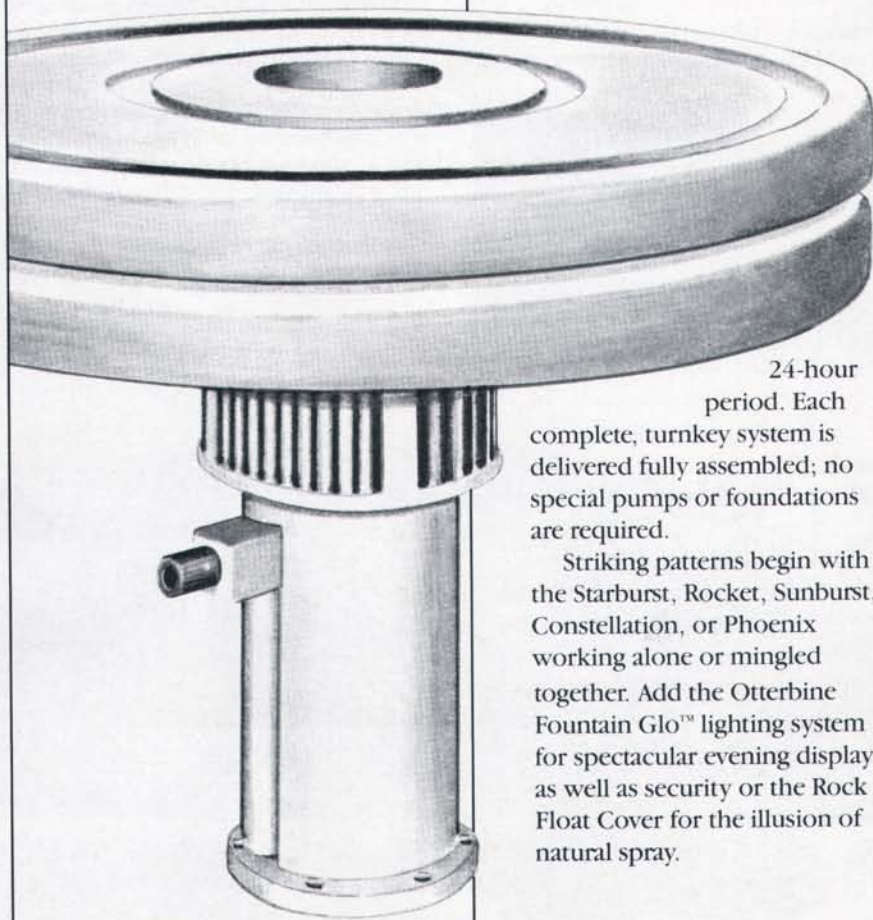


# Troubled waters?

## Otterbine Aerators

The prescription for troubled breathing, poor circulation, and changing temperatures in ponds and lakes is practical engineering that is esthetically pleasing.

These aerators range in power, circulating from 600,000 to 20 million gallons of water in a



24-hour period. Each complete, turnkey system is delivered fully assembled; no special pumps or foundations are required.

Striking patterns begin with the Starburst, Rocket, Sunburst, Constellation, or Phoenix working alone or mingled together. Add the Otterbine Fountain Glo™ lighting system for spectacular evening display as well as security or the Rock Float Cover for the illusion of natural spray.

Otterbine Aerators meet the water management needs of golf courses, parks, recreational lakes, office developments, and residential condominiums. Call or write for more information:

**Barebo Inc.**  
R.D. 2, P.O. Box 217  
Emmaus, PA 18049

215/965-6018



# Topdressing Smooths The Way for Sports

**H**idden below the green canopy of sports turf are land mines just waiting to explode. They can wrench an athlete's ankle, redirect a carefully aimed putt, or cause serious problems with drainage.

There may be hundreds of these mines on any one sports surface. By managing only the turf — and not the soil surface below — sports turf managers are playing with explosives.

Managers of putting greens, bowling greens, croquet courts and tennis courts know their jobs may be at stake if the soil is not as smooth and level as the turf above. They verticut, topdress, drag and roll these surfaces regularly, to make sure that balls rolling over them don't veer off course unexpectedly. To achieve an absolutely smooth surface they will even compromise the health of the turf for the sake of a "true roll."

With so much attention paid to the soil surface by these sports turf managers, people are beginning to wonder why athletic fields receive so little attention when it comes to smoothness.

You have to crawl before you walk, as the expression goes. Just maintaining turf cover is hard enough at many facilities. It's

a constant battle to establish and maintain dense turf when fields are used day in and day out and budgets are tight. Furthermore, the amount of soil disturbing activity is greater on athletic fields than on greens and tennis courts. Repairing large divots after games is a step in the right direction. However, by mid-season a heavily used field can still become a patchwork of repaired spots.

When you get right down to it, turf cover may be secondary to field smoothness in many instances. Of course, the ultimate goal is to provide both. But with liability insurance rates and injury lawsuits at an all-time high, a sports complex can't afford to neglect either. Facilities that provide fields for sports can reduce their risk only by having a complete maintenance program and controlling use.

You might expect that preventing injuries should be reason enough to invest in surface maintenance equipment. Instead, action is usually taken when disruptions in play caused by bad bounces or poor footing become intolerable for the teams using fields.

Whatever the reason, topdressing to restore field integrity and smoothness is an

important part of sports turf management today. Advances in topdressing equipment allow large quantities of topdressing to be applied to acres of turf in a matter of hours without interrupting field use.

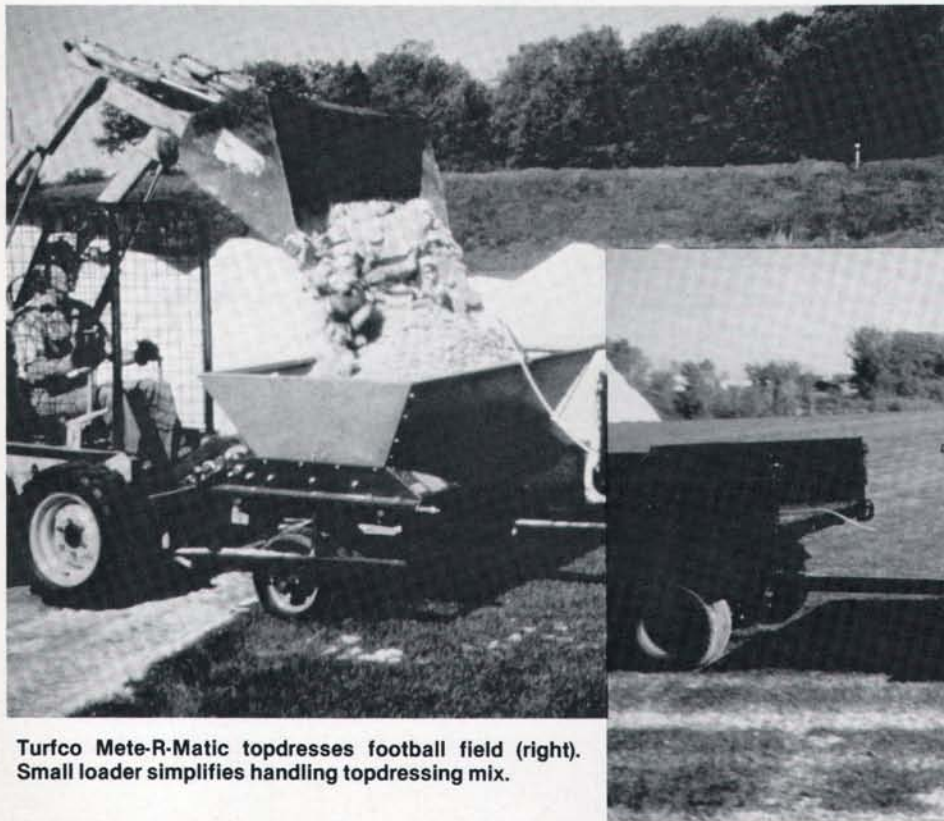
Topdressing can also correct heavy layers of thatch, which cause fields to be spongy and less drought tolerant, without the more severe practice of heavy verticutting. Furthermore, when combined with heavy aeration, topdressing can slowly amend heavy soils that drain poorly and compact easily.

Topdressing has long been a chapter in the book of tricks for managers of greens and tennis courts. Cloaked in secrecy for decades, these tricks were the job security of the greenskeeper. Without nationally recognized standards for greens construction, such as those developed in the 1960s by the United States Golf Association Green Section, greenskeepers developed their own mixes of soil, sand and organic matter for spreading on these surfaces.

Prior to the '60s, golf course architects would specify their own particular combination of materials for greens construction. It was not unusual for them to modify native soils with sand, composted sawdust, shredded corn cobs, leaf mulch, peat moss or whatever material was available locally. The wise greenskeeper sought to match this mixture for topdressing, usually spreading the mix with shovels, since the area was relatively small.

With the development of the USGA specifications, greens built or reconstructed

*continued on page 16*



Turfco Mete-R-Matic topdresses football field (right). Small loader simplifies handling topdressing mix.

# The Ultimate Turf Team

## CORE MASTER 12

Fits All Tractors

### The Ultimate Aerator

GreenCare has combined high-tech engineering and simple design to produce the strongest, most versatile and efficient aerator on the market today. Vertical aeration combined with variable pattern, variable depth and a variety of tine types and sizes provide today's Turf Specialists with the tool they need to tailor aeration to their requirements.

### Core Collection System

- Simply attaches to rear of CoreMaster.
- Auto-reset on next aeration pass.
- Removes cores as you aerate and automatically dumps cores at the end of each run.
- One man can do the work of four.
- No other expensive machines or operators required.
- On golf greens, play can continue during aeration.



## SPREAD MASTER

### The Ultimate Topdresser

GreenCare engineering leads the way in Turf Equipment Innovation again:

- All hydraulic drive.
- Tubular steel and zinc annealed sheet metal construction.
- Roller drum eliminates conveyor belt problems.
- Internal rotating baffle prevents "material surge" at the start of each run.
- Independent control of brush speed, drum rotation and gate opening provide precise rate of application.
- Flared top for easy filling with front-end loader.



SOON TO BE RELEASED

**GREENCARE**<sup>®</sup>  
INTERNATIONAL

(714) 842-6003

FAX: (714) 842-1707

17851 GEORGETOWN LANE, HUNTINGTON BEACH, CA 92647

For more information and your nearest distributor, contact the pros at GREENCARE. They'll be happy to share the news.

Circle 141 on Postage Free Card

August, 1988



Large topdresser from Bannerman can topdress large areas heavily.

## Topdressing

*continued from page 14*

during the past three decades contained a top layer consisting largely of fine-to-medium sand regardless of their location. Golf course superintendents, discarding secrecy for open discussion of improved turf management techniques, learned that periodic topdressing with pure sand or sandy mixes made their greens "truer" and "faster." Cutting heights started dropping at the same time, as improved cultivars of bentgrasses and bermudagrasses for greens were developed.

By the end of the '70s, it was not unusual for superintendents to topdress greens every week to ten days. Obviously, this required equipment that could apply a thin, even layer of material quickly. However, they didn't want to use heavy equipment on greens if they could help it.

Drop spreaders put down streams of material. Agricultural spreaders, such as manure spreaders, were too large to operate on greens. They also allowed clumps of material to pass through the machine onto the turf. A smaller, more precise device was needed for topdressing greens.

Frank Ditter, a designer of aircraft components, consorted with Art Cobbs and Bennett Larson at the Minneapolis Golf Club to develop a lighter topdresser for golf courses. The original Mete-R-Matic was introduced in 1961 by the Sodmaster Division of Federal Aircraft.

As the name implies, the topdressing is metered onto a conveyor belt. A spinning brush at the end of the belt shoots the material down evenly into the turf. With this system, a layer of material as thick as 1/2-inch or as thin as a dusting could be applied in one pass. The original self-propelled unit and another model designed to be pulled by a turf vehicle are marketed today by Turfco Manufacturing, Inc.

In 1971, Cushman developed a topdresser for greens that was mounted on the rear of its turf truckster. The unit did not tie up the vehicle, since it was easily removed and replaced with a variety of other attachments. One of these was a large hopper spreader that could distribute sand in a pattern nearly 20 feet wide. If the turf manager was looking only for a light topdressing with sand, these units were faster. Hahn also offers an interchangeable hopper spreader attachment for its Multi-Pro 44 utility vehicle.

But greens weren't the only areas superintendents wanted to topdress. "Superintendents have started to manage their fairways like greens," says Bruce Calhoun with Bannerman in Rexdale, Ontario. "Today, many superintendents cut their fairways with triplex greens mowers and pick up the clippings.



Brush on Cushman topdresser distributes mix evenly and breaks up clumps.

They also topdress fairways heavily once or twice a year. Greens topdressers are great for greens, but when you have acres of fairway to cover, they can be too slow."

Topdressing acres of turf is a large operation. To apply a 1/4-inch-thick layer over one acre requires more than 30 cubic yards of material. To apply the same layer on a 5,000-square-foot green takes almost four cubic yards. Compare this to a baseball infield with 2 3/4 yards or an outfield with more than 30 yards. A regulation football field or soccer field would require between 35 and 40 cubic yards — for 1/4-quarter inch of coverage!

Volume is one thing, but weight is more dramatic. Topdressing mixes can weigh from 1,000 lbs. per cubic yard to more than a ton. Handling and shipping 80 tons of sand is a big task for anyone.

Working with a number of Ontario superintendents, Bannerman redesigned and reconstructed a large-capacity manure spreader that could hold up to three cubic yards per load. The Turf Topper reduces the handling of material, in some cases by more than two-thirds and applies up to one inch of material at a time. However, due to the spreader's size and weight when loaded, the company does not recommend it for greens. The firm recently developed a model that will carry nine cubic yards.

Fairway topdressing opened the door for sports turf managers to topdress athletic fields. It also gave them the ability to amend the topsoil in large areas. Fields constructed with heavy soil can be core aerified prior to topdressing. Then better-draining, more compaction-resistant amendments can be topdressed over the area and dragged into the holes. While a single topdressing may improve the soil only slightly (less than 15 percent), repeating the process over time can make a difference where total reconstruction is out of the question.

The most recent entry into the topdresser market is the Spread-Master by Green Care International. This machine replaces the belt feed mechanism with a matted drum roller. The roller prevents an initial surge of material as the unit starts up. The topdresser utilizes hydraulic power for the roller and the brushes, to provide a wide range of adjustments.

Regardless of the type of topdresser used, plans should be made to handle materials as efficiently as possible, states Ron Urban, operations manager for Green Care. "Unless exotic mixes are used, it is best to stockpile topdressing material in a water-proof bin or cover it with PVC sheeting."

"A popular technique is to load a trailer with material and use a Bobcat (small loader) to transfer the material on location to the topdresser," says Urban. In this way, the loader does not have to return to the bin for reloading each time. Another technique is to calculate the rate of application and dump the material on the turf at prescribed intervals.

The frequency of topdressing decreases with the size of the turf area. Golf courses prefer frequent, light topdressing, while athletic field managers will apply a thick layer when overseeding early in the fall or while preparing the fields in the spring, says Jim Kelsey, president of Partac Peat Corp., a New Jersey supplier of topdressing. "Ideally, the sports turf manager should topdress once in the spring and once in the fall.

"Topdressing is especially helpful in maintaining the crown of a football field. The center of the field takes the most beating and requires the best drainage. Topdressing helps maintain the proper grade and smooths out depressions made during previous games. It can also improve the germination of seed sown in worn areas. Do not apply heavy topdressing to restore crowns during hot weather."

Topdressing offers many benefits. However, they must be balanced by an understanding of soil/topdressing compatibility. If the existing soil drains poorly and compacts easily, you won't want to topdress with the same soil—even though it would provide the greatest compatibility.

Part of the goal is to improve soil texture where possible. Using a topdressing with a texture different from the existing soil carries with it the risk of layering. A surface layer can impede the movement of air, water and nutrients in the root zone, warns Dr. A.J. Turgeon, professor of turf management at Pennsylvania State University.

Layering has been cited for disrupting decomposition processes in moist soil, a condition frequently called "black layer." Surface water percolates down through a layer of well-textured surface soil to heavier soil below. The subsoil becomes waterlogged, robbing bacteria and microorganisms of the air they need to properly decompose organic material. The subsurface layer must be broken up by cultivation periodically to restore proper drainage.

Instead of withholding topdressing, sports turf managers should incorporate better-textured soils into existing ones with surface cultivation techniques such as shallow and deep aeration. "As long as the topdressing consists of a better-draining medium than the existing soil, the benefits will outweigh the drawbacks with proper management," says Kelsey. However, he cautions sports turf managers about using straight sand for topdressing. "Sand has to be babysat, especially with cool-season grasses. It can change water and nutrient requirements—in other words your maintenance schedule." Sand rootzones require careful management and a particularly close watch on water. A good irrigation system is a critical component of sand-based sports turf.

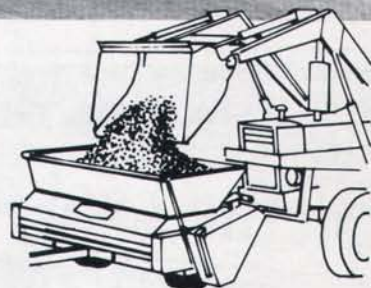
After selecting a particular topdressing, stick with it from then on. Even sands can vary considerably in size and shape. Managing compatibility is simpler with two different known textures than a multitude of varying ones.

Uniformity of topdressing mixes is also important. Commercial suppliers have the equipment to mix, screen and fumigate topdressing to meet almost any specified analysis. They will usually stock quantities of greens mixes. The two most common ones are the USGA and the Rutgers mixes.

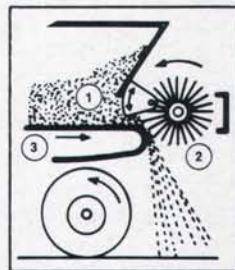
*continued on page 18*

## TURFCO METE-R-MATIC II TOW-TYPE TOP DRESSER

Top dressing levels existing turf on athletic fields while stimulating growth and improving soil conditions. Repetitive top dressing fills in the low spots and also promotes the decomposition of thatch.



- Top dress an athletic field in under 2 hours
- Easy loading with a front end loader



- 1 The adjustable metering gate accurately controls the flow of top dressing.
- 2 The high-speed, rotating brush catches the top dressing from the conveyor belt and drives it down to the base of the turf.
- 3 A heavy-duty, composition, conveyor belt carries the top dressing from the hopper through the metering gate to the brush. Top dressing flows evenly and accurately.

- 18.3 cubic foot hopper capacity reduces both top dressing time and labor costs
- 60" width swath
- Pin Hitch makes attachment to tractor or turf truck easy and quick
- Ideal for sports turf application

**TURFCO MFG., INC.**  
3456 N. Washington Ave.  
Minneapolis, MN 55412-2688

Ph. 612/588-0741  
Telex 5106013762

**TURFCO**



Large hopper pendulum spreader from Hahn is a fast way to topdress lightly.

### Topdressing

continued from page 17

The USGA mix is more than 90 percent sand by analysis (weight) and should contain no more than five percent silt and three percent clay. By volume the USGA mix is between 70 and 80 percent sand. It was designed for high infiltration on greens constructed to USGA specifications (high sand).

The Rutgers mix contains 70 to 80 percent sand by weight, or roughly 50 percent by volume. It contains between 5-15 percent silt and 5 to 8 percent clay by weight. This mix is heat treated for a number of rea-

sons. The first is to kill weed seeds, fungi and nematodes in the components. The heat also binds the silt and clay to sand particles to form water-stable aggregates. Finally, it dries the mix so it can be screened to a size of 2 mm.

Kelsey believes mixes for Kentucky bluegrass or perennial ryegrass athletic fields should not contain more than 50 percent sand by analysis, unless they were constructed with a high-sand soil mix. The silt and clay portions retain more moisture and nutrients than sand, and they provide sites for chemical reactions important to nutrient

exchange. Microbial activity is also lower in sand. As the sand content increases the likelihood of leaching nutrients through the soil increases. Kelsey also states that the higher the sand content, the less topdressing should be applied at any one time.

Sports turf managers should consult with their state extension service before selecting and beginning a topdressing program. As John Hall, extension turf specialist at Virginia Polytechnic Institute, states, topdressing mixes should be tested in a laboratory for many different factors. These include infiltration rate, moisture retention, bulk density, pH (acidity or alkalinity) and pore spaces. Commercial suppliers will have test results for their mixes.

In the final analysis, topdressed sports turf requires closer and more skilled management than turf that is not topdressed. This is a small price to pay for the benefits it provides.

The most obvious is a smooth surface that ensures the greatest safety and playability. Athletes can safely place their feet on the turf knowing that it will be level and give them the support a body needs to avoid injury. This increased confidence helps them perform to the best of their ability. They can also rely on a ball striking or rolling on the turf to react consistently without surprises. Competition then becomes a true test of skill, rather than a matter of luck or circumstance.

continued on page 20

## On the best dressed list again



### The Bannerman TURF-TOPPER

will keep your sports field on the best dressed list in any league, year after year.

Our FAX No. is 247-6540



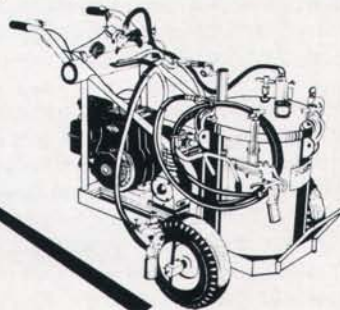
Gordon Bannerman Limited • 41 Kelfield Street, Rexdale, Ontario M9W 5A3 • Telephone 416-247-7875

## EZ-LINER

Precise - Dependable - Proven

We have an economical Line Striper for all your marking needs. Competitive pricing and well-known dependability enables even the lowest budget to operate an EZ-Liner.

Athletic fields, courts, parking lots, etc. are all easily marked. All of our machines are designed for precise, straight-line operation, and prices start under \$1000.00.



For more information on our complete line of Stripers, contact:

### EZ-LINER Industries

P.O. Box 223 Orange City, IA. 51041  
Ph. (712) 737-4016

5007-EZ





## COME SEE OUR TRIPLE FEATURE

Now showing. The new and improved Ransomes Motor 180 TR15B. Built with star quality. 150 years of reel-mowing expertise. And three great new ideas that make it the most versatile, compact triplex rider today.

Standard hydraulic cutter lifts. A smooth, powerful Vanguard V-twin engine, for easier-than-ever power up long grades. Optional three-wheel drive, for greater traction.

Plus the usual Motor 180 turn-ons: Low, ground-hugging design. Maneuverability in and out of tight spots. Hydrostatic single-foot drive.

And Ransomes famous durability. The new Motor 180 TR15B. It just might be the most entertaining triplex rider on the big green.

To get the big picture, see your Ransomes distributor. Or call Ransomes, Inc., One Bob Cat Lane, Johnson Creek, WI 53038 (414) 699-2000.

**RANSOMES**

**BOB-CAT®**

WHERE GREAT IDEAS START

Circle 139 on Postage Free Card

## Topdressing

continued from page 18

The benefits to players and the sport are matched by benefits provided to the turf-grass plant. Topdressing protects important parts of the plant, particularly the crown and lateral roots and shoots of creeping turf-grasses such as bermudagrass, Kentucky bluegrass, creeping bentgrass and red fescue. Under low mowing conditions these plant parts are more exposed to traffic, heat and wind. Topdressing protects them from wear and the elements, thus improving the growing conditions for the turf. The same is true for seed applied to fields. Topdressing helps maintain moisture levels and insulates the germinating seed and seedlings from excess heat or traffic injury.

By restoring a smooth grade and improving the texture of the topsoil, both vertical and horizontal drainage are improved. Better-textured soil resists compaction and the complications it causes with drainage and surface hardness. Air, water and nutrients can also reach a healthy balance in the soil.

One of the recent pluses for topdressing is its role in speeding up decomposition of thatch. It creates an environment at the soil surface favorable to organisms which break down dead plant material. By keeping thatch levels in check, turf is less prone to surface rooting and less disposed to drought and surface damage.

Recent tests by Dr. Robert Carrow and Dr. B.J. Johnson at the University of Georgia revealed that topdressing was more effective in reducing thatch in Tifway bermudagrass than aeration or vertical mowing. Carrow and Johnson report that topdressing mixed with thatch becomes mat. "Even if the thatch does not decompose rapidly, the mat situation that is encouraged provides a better turfgrass growing medium."

A Washington golf course superintendent reports that sand topdressing has reduced the population of *Poa annua* on his bentgrass greens. The greens were constructed of organic soil 70 years ago without drain tile. Topdressing saved him from rebuilding 20 greens. A Georgia superintendent has reduced the number of times he aerates his greens by topdressing and dragging sand into the core holes.

A superintendent can't help but notice the soil and roots on his greens each time he changes the cup. When he notices that the roots stop where the old soil ends and the topdressing starts, he has a decision to make. He can continue topdressing to make the topdressing material deep enough for healthy root growth. He can attempt to mix the subsoil with the topdressing by deep cultivation. He can cut trenches to connect the old drain lines with the new topsoil. Or he can rebuild. These are tough choices.

Sports turf managers should take core samples of topdressed areas regularly to

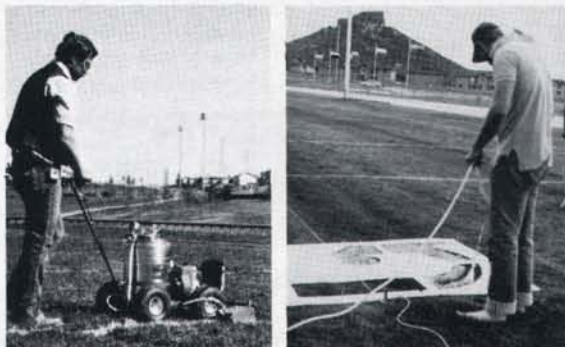
check root growth, soil moisture and compatibility. Aerate periodically to break through any subsurface layers. Explore occasional deep cultivation or channel drains to preserve drainage. Avoid using pure sand as a topdressing unless you are willing to make the adjustments in maintenance.

Rebuilding is the final option. Technically the field should have been constructed with properly textured soil in the first place. If it had been, and you topdressed with the same soil, there wouldn't be a compatibility problem. Even when a field is rebuilt, topdressing is the best way to preserve a smooth, consistent and safe surface.

Just in case topdressing can't be worked out right away and your sports turf is not as smooth as it should be, remember that soil cores removed by aerifiers are essentially a form of topdressing. Let the cores dry for a day or two on the surface. Then use a drag to break them up and brush the soil into low spots. The combination of aerifying and topdressing with the cores will provide some of the same benefits as a prepared topdressing. Some sports turf managers collect cores for this purpose.

If directors of schools, parks, colleges and stadiums want safe sports turf, eventually they will have to make a commitment to proper field construction. Until they do, and after they do, topdressing is one technique that will go a long way toward providing safe, consistently playable sports turf. □

## IS YOUR FIELD A "WINNER"?



NEWSTRIPE can supply the products to make your sports surfaces the most attractive in your conference. Our line markers and stencils are being used by major universities, school districts and soccer clubs for field maintenance.

### Check these possibilities:

- Football
- Basketball
- Soccer
- Playgrounds
- LaCrosse
- Shuffleboard
- Baseball

**NEWSTRIPE** Inc.

P.O. Box 440881  
Aurora, CO 80044

CALL  
1-800-624-6706  
For Details

## SPRINKLERS REBUILT



## THE AMERICAN WAY



SEND US  
THIS...

SATISFACTION  
GUARANTEED



WE'LL RETURN  
THIS...

NO HASTLES  
IN BETWEEN

We rebuild: Aqua Dial, Buckner, Rainbird, Royal Coach, Thompson, Weathermatic, Weather-Tec, Rain-O-Mat, & much more...

Large stock of sprinkler parts, valve parts, and a great selection of irrigation supplies. Do yourself a favor, call us today!

WE BUY  
OLD USED  
SPRINKLERS



**AMERICAN**

IRRIGATION REPAIR & SUPPLY CO., INC.

3270 Seldon Court #3 Fremont, California 94538

**(415) 659-8558**

GUARANTEED WORK  
GUARANTEED TURN-  
AROUND TIME!!!