

# Connect with the industry

## www.sportsturfonline.com

### Digital Archives:

Electronic flip books of the magazine

### Calendar of Events:

Find seminars, courses, trade shows, conferences and related information

### Marketplace:

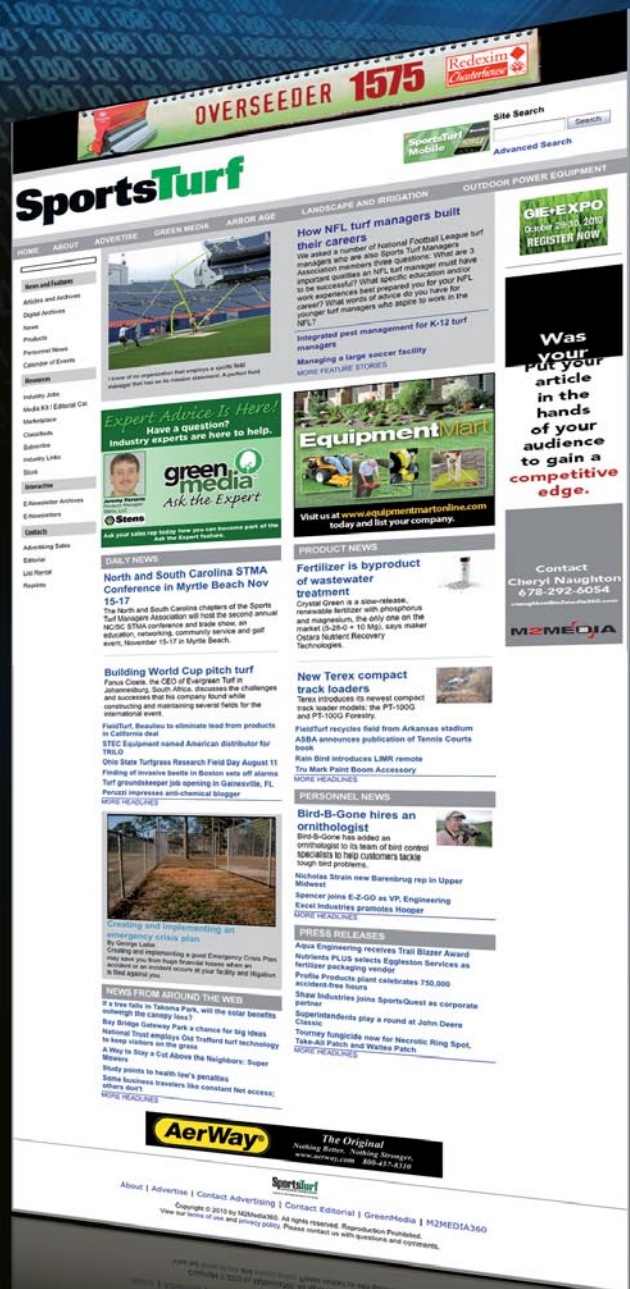
Our online directory of industry manufacturers, dealers and distributors

### E-Newsletters:

The latest news straight to your "In" box

### Industry Jobs:

View the latest postings in our Career/Job Center



Through **www.sportsturfonline.com**, we provide relevant content that will enhance our audience's ability to work smarter. In addition to feature stories, columnists, product information, and news from around the world, **www.sportsturfonline.com** also provides the latest industry **job postings**, **event listings**, **online directory**, and access to our **digital issues** and **e-newsletters**.

# Notes from STMA SOUTHEAST CONFERENCE PRESENTATIONS

**T**HE 2011 STMA SOUTHEAST REGIONAL CONFERENCE IN KNOXVILLE, TN June 15-16 included tours of the softball and soccer complex at the University of Tennessee as well as “walk-the-field” tours of 102,455-seat Neyland Stadium and Lindsey Nelson Stadium, where the Volunteer baseball team plays. That tour included the Vols’ football indoor practice facility that larger than many airplane hangars, and the locker rooms, workout facilities and recruiting centers for both facilities.

The event also included a 3-hour outdoor trade show on the site of the University’s new Center for Athletic Field Safety (CAFS), where attendees got up close and personal with products of 31 exhibitors, including some equipment test drives.

Dr. John Sorochoan, associate professor of turfgrass science at Tennessee and Director of the CAFS, and doctoral student Adam Thoms introduced attendees to the Center, which includes 60 30 x 15-foot “mini-football” plots that include every type of synthetic field in use today as well as natural turf species on native soil, sand build-up and sand-cap bases. Sorochoan said they will be testing in field conditions, looking not only at traffic issues but also injuries, specifically studying the interactions between turf and cleats (and other shoe types), and also will be monitoring environmental conditions under the surfaces.

Thoms said they plan to treat turf plots as any turf manager would, and that studies would include stormwater runoff. “We will be looking at what is coming off the fields,” Sorochoan said. “And collecting water samples to see what’s in it.”

The Center officially opened July 13 and is partially funded by AstroTurf’s \$3.5 million donation.

Dr. Grady Miller of North Carolina State and Eric Fasbender, CSFM, of LSU presented on field painting. Miller has been studying paint and its effects on turf. He said

for example that red paint reduces photosynthesis by 75%, which is “like shade.” He cited data regarding testing the red and white colors of the Southeastern Conference (SEC) logo that showed “an amazing difference between the two colors” regarding turf recovery.

Miller said the worst colors for turf are black, “Duke” blue, and garnet. His studies



**>> THIS IS A BAG OF DEBRIS** collected from the turf at Lucas Oil Stadium, Indianapolis, IN home of the NFL's Colts. It was on display at the Regional Conference by Jacob Maynard of FieldGroomers; part of his business is cleaning synthetic surfaces.

are continuing and will turn to application techniques and making colors using other colors in the spectrum.

Miller said an airless sprayer can pay for itself because it can be used on surfaces other than turf such as to line parking lots though he knows aerosol is still used extensively, especially at the high school level. Miller said the chemistries in both airless and aerosol paints are similar for testing purposes.

Fasbender said he verticuts his endzones in Baton Rouge and his logo areas after each season to help get out some of the built-up paint out of the rootzone. He said the light reflection/absorption of your field paint color can make a difference in your paint choice; he said the purple endzone always

comes back faster than the yellow endzone at Tiger Stadium.

He emphasized that to keep your airless sprayer functioning properly it must be cleaned regularly. Another tip was gluing guards on your stencils to hold them up and not crush any grass. And he said keeping aerosol paint as a back up is smart, especially if you need to apply in light rain.

## COVERS

Dr. Mike Goatley of Virginia Tech and incoming president of the STMA, and Jesse Pritchard, CSFM, sports turf manager for the University of Virginia, presented on turf covers. They held up examples as they discussed different types of cover material and different uses for each. A lightweight and popular design was shown as Goatley said it lets in 65% sunlight but can still keep the ground moist if you're growing in after a renovation or seeding. These were not recommended as winter protective covers however.

A geotextile design was a heavier cover that will normally stay in place easily; their orange-colored version is known as a good color for turf growth. Goatley said if you keep Kentucky bluegrass under this cover the grass will be green but you will pay a “post-cover syndrome” price.

Another cover, a woven polypropylene, is not a rain tarp but works the same way since it prevents moisture from getting to your turf.

Goatley said one of the best uses for covers is traffic management. “If you put down a tarp, you will keep people off your field,” he said, noting that tarps are often on in northern Virginia from November through March.

In fall, he said you need at least 50% sunlight to get through your turf cover and that dark-colored covers aren't good for growing later in the season. In spring when you want the sun to get through is another time to use the lighter covers. ■



## JOHN MASCARO'S PHOTO QUIZ

### Answers from page 17

As the sports turf manager was painting foul lines on the baseball stadium field he noticed this brown line on the grass. The base grass is 419 bermuda and it had been overseeded with ryegrass, which was transitioning out when this photo was taken. After further examination of the damaged area and thinking back over the past few days he realized the cause of the problem. Earlier in the week, he had a company come out to see if they could steam clean their artificial turf halo that surrounds the home plate area on their softball field. The company had to drag out several hoses to get to the turf. It was a warm day and the hose and the hot water that was running through the hose between 225-300 degrees left a line where the hose had been laying. It is very minimal damage and was only tip burn so the sports turf manager just let the turf grow out. As you can see the halo cleaning turned out pretty well, however they will protect the turf from the hot hose when the company comes back out to finish the job.

*Photo submitted by Weston Floyd, head turf manager at The University of Texas at Tyler.*

If you would like to submit a photograph for John Mascaro's Photo Quiz please send it to John Mascaro, 1471 Capital Circle NW, Ste # 13, Tallahassee, FL 32303 call (850) 580-4026 or email to [john@turf-tec.com](mailto:john@turf-tec.com). If your photograph is selected, you will receive full credit. All photos submitted will become property of *SportsTurf* magazine and the Sports Turf Managers Association.



## QUALITY. INNOVATION. DELIVERED



Ground Quake Sand Injector



RotaDairon Soil renovator



AFT Trenchers



Laser Graders



Combinator/Fieldtopmaker and Dump Trailer



Material Handler/Topdresser

[WWW.STECEQUIPMENT.COM](http://WWW.STECEQUIPMENT.COM)

864.225.3666

**STEC**  
SPECIALIZED TURF EQUIPMENT COMPANY

## TOP PERENNIAL RYEGRASSES FOR SELECTED TRAITS, 2005-2009 NTEP TRIAL DATA

Traffic Tolerance "N. Brunswick, NJ"	Traffic Tolerance "Mead, NE"	Traffic Tolerance "Puyallup, WA"	Grey Leaf Spot Tolerance Four location average
Affinity	ASP 6004	Allstar 3	1G Squared
BAR LP 4920	ASP 6005	Charismatic II GLSR	Allstar 3
Barlennium	ASP 6006	Chivalry	Apple GL
Brightstar SLT	Chivalry	Derby Xtreme	Dart
Charismatic II GLSR	Cutter II	Exacta II GLSR	Dasher 3
Chivalry	Derby Xtreme	Fiesta 4	Defender
Citaion Fore	Edge II	Homerun	Exacta II GLSR
D04-LP05	Fiji	Palmer IV	Fiesta 4
DP 17-9788	Firebolt	SR 4600	Line Drive GLS
Hawkeye 2	Kokomo II	Uno	MMW
Palmer III	Nexus XR	Zoom	Paragon GLR
Panther GLS	Palmer IV		Revenge GLX
Pinnacle	Pick 02-R		Soprano
Plateau	Pizzazz		SR 4600
Silver Dollar	Uno		Uno

"NOTE: Ryegrasses are listed alphabetically and are either the top 15 entries for that year/location, or all of the entries" in the top statistical grouping. Numbered entries are often still experimental and not yet commercially available.

"N. Brunswick, NJ - data is from wear applied in Sept. 2009 only and reflects recovery from wear 43 days after application."

"Mead, NE - Traffic was applied regularly throughout each growing season. The rankings are based on the mean" of monthly turf quality ratings.

"Puyallup, WA - Traffic was applied with twelve passes per week using a Brinkmann simulator, applied for eight weeks each" in spring and fall. Rankings are based on the mean of monthly turf quality ratings.

"Grey leaf spot - was evaluated at W. Lafayette, IN, College Park, MD, N. Brunswick, NJ and Adelphia, NJ."

fall 2010, and new data is not yet available. Therefore, we must consider the four years of data compiled and summarized from our 2004 trial of perennial ryegrass. The 2005-2009 data show many new grasses with improved quality compared to the top performers in the previous NTEP trial,

'Mach I' and 'Pizzazz'.

Grey leaf spot is a potentially devastating disease of perennial ryegrass that can destroy entire turf stands in a short period of time. Several locations submitted data on grey leaf spot during the testing period. Statistically significant performance differences were ob-

**Grey leaf spot is a potentially devastating disease of perennial ryegrass that can destroy entire turf stands in a short period of time.**

served with some of the top performers being 'Fiesta 4' (9.0 rating, scale is 1-9; 9=no disease), and 'Exacta II GLSR', 'Soprano', 'SR 4600', 'Dasher 3', 'Defender' and 'Allstar 3' (all having an 8.9 rating).

Traffic tolerance of the perennial ryegrass entries was evaluated at several locations over the four year test period. In the final summary, very few differences were noted at the Ithaca, NY and East Lansing, MI traffic sites. The Mead, NE trial (using a Brinkman) finished with a large group of entries in the top statistical group, led by 'Chivalry'. The Puyallup, WA location, also using a Brinkman unit, showed the largest cultivar separation in turf quality averaged over the four years, with eleven entries in the top group, led by 'Uno', 'Derby Xtreme' and 'Zoom'. Overall wear tolerance ratings, averaged over the Amherst, MA and North Brunswick, NJ sites, have 'Keystone 2' in the top spot. However, about 50 entries performed statistically equal to 'Keystone 2'.

## BERMUDAGRASS

Our latest bermuda trial, established in 2007, contains 25 seeded entries and six vegetative entries. Many of these entries are experimental cultivars or new commercial cultivars. NTEP evaluates warm-season grasses by comparing seeded and vegetative entries, and also by separately comparing seeded vs. seeded and vegetative vs. vegetative.

The Fayetteville, AR location applied traffic in summer and fall but fewer statistical differences were observed than at that the Raleigh, NC location. The Raleigh, NC trial evaluated wear tolerance in seven rating dates through August and September. 'Latitude 36' was at the tops for wear tolerance ratings at six of the seven rating dates, with each rating finishing well within the top statistical grouping. The only other entries to finish in the top statistical group for each rating date were 'North Bridge', 'Premier' and 'Tifway'.

Entries were tested for the third consecutive year under the saline irrigation treatment (SAR=5.41) imposed at Las Cruces, NM. 'Tifway', the highest turf quality performer in 2008 and 2009, was the highest scoring entry again in 2010 with the vegetative entries 'Latitude 36' and 'North Bridge'



## TOP BERMUDAGRASSES FOR SELECTED TRAITS, 2010 NTEP TRIAL DATA

Traffic Tolerance "Raleigh, NC"	Winter survival Two location average	Saline Irrigation "Las Cruces, NM"
Latitude 36	BAR 7CD5	Latitude 36
North Bridge	Hollywood	North Bridge
Premier	Latitude 36	Princess 77
Tifway	Midlawn	PSG 9Y20K
	North Bridge	SWI-1113
	OKS 2004-2	SWI-1122
	Patriot	Tifway
	Premier	
	PSG 9Y20K	
	RAD-CD1	
	Riviera	
	Tifway	

"NOTE: Bermudagrasses are listed alphabetically and are either the top 15 entries for that year/location, or all of the entries" in the top statistical grouping.

Numbered entries are often still experimental and not yet commercially available.

Seeded entries are listed in **red**.

"Raleigh, NC - entries listed finished in the top statistical group in each of seven ratings collected in August and Sept."

"Winter survival was evaluated at Stillwater, OK and Blacksburg, VA."

"Las Cruces, NM - the saline irrigation water used had a Sodium Adsorption Ratio (SAR) of 5.41."

being statistically equal to 'Tifway' for turfgrass quality. The seeded entries 'Princess 77', 'SWI-1113', 'SWI-1122' and 'PSG 9Y20K' also performed statistically equivalent to 'Tifway'. Additional testing on salt and traffic tolerance should be reviewed before making purchasing decisions based on these traits. ■

*Kevin Morris is executive director of the National Turfgrass Evaluation Program (NTEP), Beltsville, MD, [kmorris@ntep.org](mailto:kmorris@ntep.org).*

## WHAT OFFSEASON?

YOU NEVER HAVE  
AN OFFSEASON...  
AND NEITHER DO WE.

At Krylon® Industrial we understand that your job is a year-round commitment and we work everyday to bring you the products you need to get your job done right the first time.

Krylon® Industrial Line-Up™ Athletic Striping Paints deliver a brighter, crisper & bolder line (in one pass) with a wide range of colors and multiple application choices to help make you more efficient and productive.

- Bright, fast drying stripes applied in one pass
- VOC-compliant and lead-free
- Non-burning formula safe on all grass fields

**KRYLON**  
INDUSTRIAL



**MAKE YOUR MARK**

VISIT [WWW.KI-LINEUP.COM](http://WWW.KI-LINEUP.COM)  
FOR MORE INFORMATION

# Verticutting 101

## Why

Verticutting is for thatch control and/or to prepare turf for overseeding. Thatch is an organic layer that develops between the soil surface and the turf canopy, mostly made up of non-decomposed stems. It indicates an imbalance in the turf management system simply because the soil microbial population cannot degrade the stems fast enough. Thatch is a haven for insects and fungal spores that can become problems during times of stress to turf.

## How

Blades cut vertically into the turf canopy and sever lateral stems, thin grass and thatch. The tearing action can disrupt the playing surface similarly to core aeration. Thatch must be removed by raking blowing or sweeping. Leaving it on the turf will just add to the thatch layer.

Apply sufficient amounts of fertilizer and water after verticutting to promote rapid turf recovery.

## You want to take advantage of the grass's recuperative potential.

## When

Examine your thatch layer by removing a core; if it's definitely deeper than one-half inch, consider it time to dethatch. Do not however verticut before expected environmental stress. Warm-season turf the best time is late spring/early summer; when the turf-grass is actively growing; for cool-season spring is the best time and again late summer/early fall. You want to take advantage of the grass's recuperative potential. Consider verticutting 1x per "growing" season.

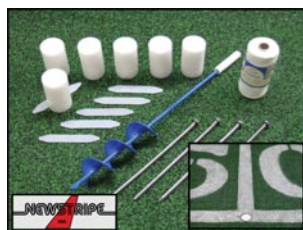
## What

Heavy thatch producers include bermuda-grass (after verticutting Bermuda, take the many live stems and use as part of some planting material), zoysia, and Kentucky bluegrass. An aggressive fertilization/use of N and irrigation program makes this situation worse. Perennial ryegrass and tall fescue produce less thatch.



also features a hydrostatic drive with 25' hose for stencil work.

**Newstripe**



there are no exposed plugs, holes or hard materials that cleats can skid on. Once installed with the supplied auger, the 2.5" diameter markers make locating key field layout points a snap.

**Newstripe**



with an 18-hp Briggs and Stratton engine.

**Redexim Charterhouse**



## NewRider 5000™ HPA

The NewRider 5000 HPA from Newstripe is the first true ride-on airless striping machine for marking athletic fields. Featuring front wheel drive with rear steering, it can quickly spray straighter, brighter looking lines on multiple fields with the 50-gal. tank. Save money by adjusting the 0-3000 psi pump to spray 'just the turf' and 'not the dirt' with any paint. Clogged spray tips and paint lines are a thing of the past with the 2.5-gal., on-board purge tank. The NewRider 5000 HPA

## SafeMark field layout system

Newstripe's SafeMark field layout system is the safest way to layout any athletic field, and eliminates measuring year after year. There are no holes to catch cleats or plugs to trip over. The SafeMark high density foam locators can't rust or be destroyed by aerators, mowers or vehicles. The UV protected foam matches the texture and feel of natural turf. They are so safe they can even be installed within the field of play. Tripping and injuries from falls are greatly reduced as

## Verti-Cut 1200

The Verti-Cut 1200 is a machine that will dethatch and penetrate even in hard ground using the standard carbide tipped blades. It is the ultimate root zone management tool for all surfaces and can work at depths from 0 - 2" at high working speeds. Unlike some verticutters, the Verti-Cut 1200 can be used behind utility vehicles, small tractors and most other prime movers, due to it being offered with a standard PTO drive or as a self contained machine that is powered

## ProCore SR series

Reduce soil compaction for healthier turf. The Toro Company's ProCore SR Series deep-tine aerators offer a variety of solutions to alleviate subsurface soil compaction on greens, fairways, sports fields, parks and many other areas. These durable and time-tested products are capable of withstanding the most extreme aeration conditions. The ProCore SR Series will get the job done!

**The Toro Company**



## New Turfco aerator

The TurnAer XT5 uses Turfco's patented steerable aera- tor technology with a new variable-speed and reversible hy- drostatic drive system. The result is an aerator that's 50% more productive than traditional aerators. Operators can steer and reverse with tines in the ground eliminating need to stop, lift and turn with each pass, reducing fatigue, cutting job time and increasing productivity. A well-balanced ma- chine, the XT5 places weight directly over the tines for better

penetration. EasyChange tines reduce changeover time. A removable tine cover provides fast, easy access for changes and cleaning. Sealed, self-aligning tine shaft bearings keep maintenance to a minimum.

**Turfco Manufacturing**



## Aercore 1500 & 2000

With an 80-inch coring swath the John Deere Aercore 2000 (1500 model is 57.5") is designed to produce good quality coring holes up to 4 inches deep, can cover 100,066 square feet per hour. Its heavy-duty frame, tine rams and adjustable hole spacing, makes this aerator durable and versatile. Operators have a choice of two coring patterns – a 2.4-inch pattern or a 3.2-inch pattern, depending on the speed of movement. Flexi-link supporting arm keeps tines perpendicular to the ground longer for high-quality holes. Fiberglass reinforced belts for quiet operation, simple maintenance. Produces up to 1,200,800 holes per hour. Six tine options to choose from.

**John Deere**



## Verticutters

STEC Equipment offers the VCU series of verticutters from TRILO. The VCU range consists of three working widths, 48", 60" and 80." They all feature a chain drive, allowing you to perform a light verticut or a deep dethatching. In addition to the standard 3-point linkage, there is an ALL NEW tow behind kit available, featuring a drawbar, hydraulically operated lift wheels and wide angle PTO shaft. All models are fitted with an anti-scalp roller, and feature a 2 year warranty.

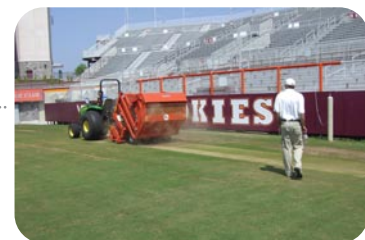
**STEC Equipment**



## Wiedenmann's Super 500

The Super 500 high dump is a heavy-duty sweeper/verticutter/flail mower collection system by Wiedenmann. The optional multi-purpose sweeper head allows for verticutting and flail mowing while collecting clippings into a 3.5 cubic yard hopper with a high dump reach up to 83". Verticut spacing ranges from 3/4", 1 1/2", or 2 1/4". Options include a golf course kit and floating axles for following undulated surfaces and to avoid scalping.

**Wiedenmann North America**



WE MAKE THE GAMES LOOK BETTER



quality bulk paints



custom windcreens



bright aerosols



custom stencils



painting equipment

# JOIN THE WORLD CLASS TEAM







WORLD  
CLASS

athleticsurfaces

Find it all on our website:  
[www.worldclasspaints.com](http://www.worldclasspaints.com)  
 1.800.748.9649

## Leading by example.

German ingenuity.  
Best in the market.  
Outstanding results.

SUPER 500.





Wiedenmann®

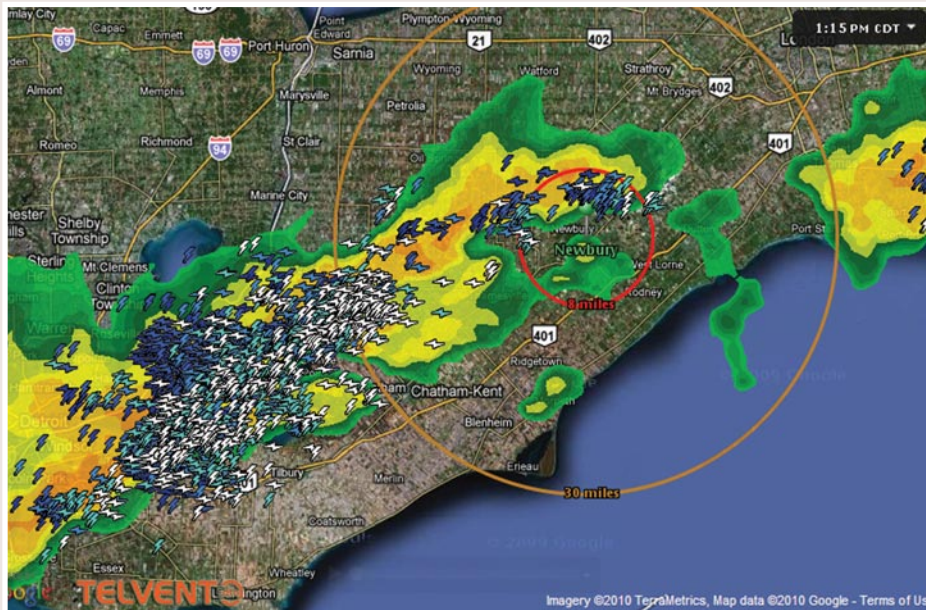
North America, LLC

912-790-3004 PHONE 866-790-3004 TOLL FREE

terraspikusa.com

# Using a web-based weather service

**Editor's note:** Don Leick is a senior product manager for Telvent and is responsible for all aspects of WeatherSentry.



**L**IGHTNING STRIKES, damaging gusts of wind, players suffering heat strokes ... out on the turf, you have probably seen it all. Severe weather is a force to be reckoned with and not one to leave to chance; today's sophisticated weather technology can help ensure the safety of your venue and the execution of your operations.

This is why thousands of high schools and colleges rely on the same level of weather service used by professional sports organizations. To monitor severe weather events, they use MxVision Weather Sentry Sports Edition, a web-based weather service that provides subscribers forecasting data. The user defines parameters at set up and then with a few clicks the system delivers color-coded instant go/no go decision recommendations during extreme weather events, which might eliminate having to second-guess the severity and scope of an approaching storm. The system also sends instant alerts both to computers and mobile devices when dangerous weather patterns occur within a previously defined parameter.

Like most high schools in Texas, Northwest High School's operations are heavily impacted by lightning, severe storms, tornadoes and strong winds. With 3,200 students – 1,200 of which are

involved in outdoor activities – the school needed a weather information system that would provide critical alerts for all of its locations. So the school subscribed to MxVision Weather Sentry including Lightning Manager, which offers reliable advanced warnings by using real-time lightning data; there is no delayed reporting.

The system proved its value a week after being implemented. Scott Fletcher, the school's head athletic trainer, received a mobile alert on his cell phone for lightning approaching their location. Both the freshman football team and the high school band were called to safety. "Less than 5 minutes after we had everyone inside and safe, our band director witnessed a lightning bolt hit the parking lot where the band was practicing. In light of this event, we already consider the system as having paid for itself, as it prevented injury to our 150 band members."

A new iPhone application sends alerts and displays current conditions based on your GPS position when travelling and during away games. For example, athletic trainers can receive instant alerts via text message if their team is in the path of a storm, leaving no one to wonder if a severe weather alert heard on radio applies to their specific location on the road. Of course, staying on top of changing weather conditions also informs turf maintenance decisions. Penn State University has more than 100 acres of outdoor fields requiring regular maintenance. Accurate forecasts for this specific location help assistant field supervisor Herb Combs better manage staffing and maintenance activities. On windy days, he reschedules chemical applications and when rain is approaching, fertilizer applications and field line painting are cancelled, all without having to worry about accruing unnecessary delay due to vague or inaccurate forecasts.

Besides safety and turf maintenance, MxVision Weather Sentry can be a useful tool in helping to prevent heat strokes, as schools can set alerts for heat indexes according to their heat policy. Even when the outdoor sports season is over, the system continues to be indispensable: School administrators use it to make better decisions about declaring snow days or evacuating the building complex due to approaching severe weather.

While the website features a recently redesigned, easy-to-use interface and unique visualization, subscribers also have around-the-clock online access to a team of 50 meteorologists. "We typed in our question regarding a major lightning storm, and within 15 minutes we had an answer, letting us know what's going on," explained Todd Kiefer, licensed athletic trainer for the Red Oak Independent School District in Texas. "This confirmation helps us with our decision-making process." ■

*Don Leick has more than 25 years experience in software and technology companies.*





## Thatch Master

TurfTime Equipment promotes healthy turf, year round, with its Advantage Aerator and the Thatch Master dethatcher/verticutter. The new Thatch Master seven point blade provides a crisp, quick healing cut, with blade spacing adjustable by 1/4" increments. Frequent aeration with the Advantage Aerator eases compaction

between seasonal deep tine or coring treatments. "Revolution" tines give more than 7" ground penetration with less surface tufting than other tines. Water weighted tanks, standard on all models adjust for soil conditions. Our range of large and small models fit your aeration needs where ever you want to grow healthy turf.

**Turf Time Equipment**



## TURFSAW aerator

Earth & Turf Products' TURFSAW is a rolling aerator that attaches buckets of tractor loaders by sliding onto a bucket and tightening mounting bolts. The weight and down pressure of the loader are used to furnish most of the working weight. About

200 pounds comes from the aerator and an additional several hundred pounds or more comes from the bucket. Solid blades are adjustable from 2.5 inches to 3.75". An additional benefit appealing to turf professionals: Spiker aerators produce lateral compaction, corer aerators produce bottom-of-stroke compaction, but the TURFSAW has a shattering action that produces little or no compaction.

**Earth & Turf**



## Parker dethatcher

Parker offers durable Thatch-O-Matic Power Rakes to dig out heavy thatch. With a 19-inch sweeping width and a 6hp 170cc Subaru® engine, the power rake can be used for dethatching and re-seeding. Housed in 12-gauge steel, the Power Rakes come with optional tine, flail or knife reels ideal for commercial and rental applications. An 11-position height of cut moves in one-fourth inch increments from 1-4" with a locking collar. The rakes

have a manually-operated clutch lever and an adjustable height handle with a vibration absorbing comfort grip.

**Parker Sweeper**



## Turf Teq broom-dethatching kit

Turf Teq offers a de-thatching kit for the 1305BR Power Broom, a 46-inch wide brush. Easily adjustable brush pressure, brush depth and brush angle allow the operator to match turf conditions while windrowing

the thatch for quick clean up. These features also make the Power Broom ideal for striping turf, spring clean up in lawns and installing "in-filled" synthetic turf. Multiple brush heights make our Power Broom the perfect tool for installing and maintaining your synthetic turf. The multi use capability or our tractor allows the unit to be converted into a Power Edger, Power Rake or Brush Cutter.

**Turfteq**

**For more information on any of these products, please visit [www.greenmediaonline.com/productportal](http://www.greenmediaonline.com/productportal)**



## The Green Industry's Networking Marketplace

GIE+EXPO offers three days of opportunities to build and renew powerful connections to help your business. You'll find the resources to maximize the return on your time investment.

# GIE+EXPO



**The 14th largest tradeshow in the USA!**

**Thursday, Friday, Saturday | October 27-29, 2011**

Kentucky Exposition Center | Louisville, Kentucky

web: [www.gie-expo.com](http://www.gie-expo.com) | email: [info@gie-expo.com](mailto:info@gie-expo.com)

Toll Free: (800) 558-8767 | Phone: (812) 949-9200

**REGISTER TODAY AT [WWW.GIE-EXPO.COM](http://WWW.GIE-EXPO.COM)**

**NETWORKING • DEMO AREA • EDUCATION • NEW PRODUCTS**



# F.O.Y.

Field of the Year



>> **Above middle:** Field set and ready for start of 3-day rugby tournament. **Above right:** Brandon posing with the Bobcat auger attachment used to drill 4-foot holes for rugby goalposts.



## Crew in Columbus handles all comers, wins Field of the Year Award

“During the 2010 season we encountered many challenges. The summer was one of the most difficult in recent years for this region, with high temperatures and very little rainfall.”