

Greentree Facility crew: Front of cart, Jose Gutierrez; sitting at left, Jack Hughes; sitting at right, Chris Denson; standing at left, Benny Avila; and standing, right, Geovani Dearmas.

aspects of the turfgrass and a few things with the hard surfaces, tennis courts, track, stadium bleachers, etc., through the course of the year,” he said. “There are few areas of common ground throughout the athletic department that we maintain. We also set up for most of the sporting events held within the athletic department.”

What’s the greatest pleasure he derives from his job?

“I would have to say the student athletes. You get to see them mature a lot at this level. It is an honor to be around the few that walk away with the big contracts, but the ones that leave with a degree in hand and become successful in the real world, that’s what it’s about,” he said. “It sure is satisfying though, when all the work is done and the finished product is laid out. Lines are bright, turf is cut, logos down, it is as close to perfection as you can get and it’s just a beautiful sight.”

What’s the biggest headache? “The biggest headache we run into is probably hurricanes [no pun intended]. So much preparation goes into getting ready for one along with still hav-

ing the normal schedule to keep up with. They can cause so much damage and the cleanup just goes on forever. They are something I can definitely do without.”

Denson also works part-time at Dolphin Stadium. “As anyone in the industry knows, it can sure be tough at times to balance work and family,” he said. “I have a beautiful fiancée, Kelley, who supports me more than I could ever ask. Between my full-time position with the Hurricanes and my part-time position with Dolphin Stadium, she understands what time is involved for each season and event. We just have to schedule our time around what is already scheduled. We do not have any children right now, but I hear things change a little when that happens. We will just have to wait and see for that.” ■

The STMA Field of the Year Awards program is enhanced by the support of these sponsors: Carolina Green, Covermaster, Hunter, Nu-Gro, Turface Athletics, Scotts Turf-Seed, and World Class Athletic Surfaces.



YOUR PRE-GAME MVP.

Krylon Line-Up® Striping Paint.

For a wide range of high-quality striping paints, Krylon's a winner on and off the field. Other benefits include:

- High Quality: New improved formula provides a one-coat, bright white stripe
- Color Selection: A wide range of options to match your team colors
- New Universal Tip: Fits all striping machines



For more information, visit <http://go.kpgind.info/sg2>.





INDUSTRIAL
PAINTS, COATINGS
AND PRIMERS



CLEANERS,
DEGREASERS, LUBES
AND SEALANTS



SUPERIOR
LUBRICANTS



CAULKS, SEALANTS
AND ADHESIVES



BRUSHES, ROLLER COVERS
AND ACCESSORIES



Krylon Products Group
Cleveland, OH 44115
Tel: 1-800-777-2966
Fax: 1-800-243-3075
www.KPG-Industrial.com

Fill in 128 on reader service form or visit <http://oners.hotims.com/13973-128>

GSA New York Established

GSA New York has been established with Kevin Trotta acting as Team Captain. Kevin is a turfgrass IPM specialist and the 2006 Turf and Ornamental Communicators Association (TOCA) Environmental Communicator of the year for his work in getting out the word about environmental stewardship.

Kevin is approaching the GSA mission from the perspective of those who maintain facilities. His work over the last twenty years has focused on integrating environmental stewardship and the management of sports fields and promoting these strategies to facility managers in the United States.

His Environmental Turf Craft guidelines have been included in the G-ForSE archives. GSA New York has a couple of projects being launched in coming weeks.

Welcome New STMA Members!

Edward Alvarez, Valencia, CA
 Joel Ames, McFarland, WI
 Lee Anderson, Sumner, WA
 Rebecca Auchter, Columbus, OH
 Ross Bailey, Fort Worth, TX
 Randy Bell, Gastonia, NC
 Pete Benevento Jr., Morgantown, WV
 Scott Bowen, Peoria, AZ
 Ken Brooks, Mercer Island, WA
 Paul Burgess, London, England
 Natasha Burkholder, Gainesville, FL
 Brad Burress, Snow Hill, NC
 Nicholas Butera, Babson Park, MA
 William Cahill, Stockbridge, MA
 Jordan Caplan, E. Lansing, MI
 Chris Carnes, Liberty, MO
 Norman Carsner, Lancaster, TX
 Richard Castleberry, Ellenwood, GA
 Justin Clarke, Stockton, CA
 Jeff Cooper, Ruston, LA
 Bob Core, Seward, NE
 Tamra Cox, Buxton, ME
 Damon Crume, Springfield, OR

Brent Cunningham, League City, TX
 Grant Davisson, Eden Prairie, MN
 Terry Day, Carlisle, OH
 Steve Deleon, Colorado Springs, CO
 Beau Dennis, Ft Collins, CO
 William Dest Ph.D., Wethersfield, CT
 Nick Donner, Beltsville, MD
 Richard Farmer, Pomona, CA
 Terry Farmer, Lakewood, LA
 Stuart Frazier, Frederick, MD
 James Gardner, Tucson, AZ
 Vince Geiser, Wooster, OH
 Kail Ghigo, Van Buren, AR
 Jim Giavacchini, Yerington, NV
 Paul Gibeault, Worcester, MA
 Allan Gibson, Orlando, FL
 Daron Gilliam, Angleton, TX
 Brent Goodwin, Lexington, KY
 Brian Hall, Staunton, VA
 Steve Hamilton, Nashville, TN
 Zeilinger Hannes, Mehrnbach, Austria
 Michael Happe, Bloomington, MN
 G. Kent Harris, Victoria, BC, Canada
 Robert Harrison, Colonial Beach, VA
 Eric Harshman, Louisville, KY
 Fred Heckle, Rock Hill, SC
 Steven Helms, Palmer, TX
 Brian Hinkley, Lynchburg, VA
 Kenneth Hopkins, Jonesboro, GA
 James Hornung Jr., Buffalo, NY
 Charles Hyde, Watertown, MA
 Randy Johnson, Lynchburg, VA
 Tracy Johnston, El Cajon, CA
 Michael Josselyn, Concord, NH
 Ed Kelly, Spokane, WA
 David Kelterborn, Buford, GA
 Nathan Kinsley, Waco, TX
 Drew Klammer, Richmond, VA
 Michael Krones, Frederick, MD
 Justin Laliberte, Plainville, MA
 Tony Lamazares, Pinecrest, FL
 Margaret Lether, Norco, CA
 Allen Lim, Hong Kong, Hong Kong
 Darren MacFarlane, Portland, OR
 Tony Macias, Portola Valley, CA
 Aaron Madill, Overbrook, KS
 Mal Maher, Newark, NJ
 Mike Manning, Stowe, VT
 George Marriott, Geneva, IL
 Todd Marrs, Palm Desert, CA
 George Marshall, Deland, FL
 Robert Martin, Bakersfield, CA
 Chris May, Boca Raton, FL
 Ellsworth May, Manchester, NH

Clarence Mayes Jr., Fairburn, G
 Derek Mckee, Santa Clara, CA
 Larry Messer, Portage, WI
 Ryan Messier, Attleboro, MA
 Daniel Miller, Pittsburgh, PA
 Kris Milobar, Goodyear, AZ
 Peter Moeller, Bloomington, MN
 Kenny Morris, McDonough, GA
 Carlos Navas, Washington, DC
 Jordan Norville, Pontiac, IL
 Chris O'Keefe, Lincoln, CA
 Samuel Petersen, Fargo, ND
 Jeff Prater, Moravia, IA
 Ron Randall, Oswego, NY
 Will Reardon Jr., Glenside, PA
 Michael Richerson, Jackson, TN
 Bobby Robinson, Bartlesville, OK
 Debbie Robinson, Savannah, GA
 Zach Rubin, Lincoln, NE
 Matthew Ruth, Fayetteville, NC
 Scott Schrader, Rock Island, IL
 Brian Schwartz, Gainesville, FL
 Matthew Selle, Chicago, IL
 Neal Sitzman, W Lafayette, IN
 Tom Skryd III, Berwyn, IL
 Joshua Slayback, Houston, TX
 Ashley Smith, White House, TN
 Brandon Smith, Glenview, IL
 Frank Smith, Myrtle Beach, SC
 Michael Smith, Vacaville, CA
 Jim Speelman, Holland, MI
 Jim Springer, Santa Clara, CA
 Robert Steele, St Augustine, FL
 Leah Swanquist, Batavia, IL
 Tom Taylor, Newark, DE
 Tyler Thaler, Owosso, MI
 Adam Thompson, Abilene, TX
 Lawrence Trafton, Lake Havasu City, AZ
 Tom Trainor, St. Paul, MN
 Timothy Tuggle, Trussville, AL
 Eric Urness, Grande Prairie, AB Canada
 Jeffrey Van Meter, Mesquite, TX
 Daryl Wagar, Camarillo, CA
 Scott Walker, The Woodlands, TX
 Michael Watson, State College, PA
 John Weatherwax, West Lafayette, IN
 Robert Weiseman Jr., Villanova, PA
 Dennis Wilderson Jr., Crownsville, MD
 Mike Williams, Charleston, SC
 Gary Willis, Tigard, OR
 Mike Winkenhof, Shepherdsville, KY
 Don Witters, Auburn, WA
 Darrel Workman, Bloomfield, NM

Recirculated Air System Keeps Dust to a Minimum

Recirculating Turf Vac

Model TV40

Super Clean, Super Quiet

- A self-contained vac system
- 20HP gas engine with a high capacity, low rpm fan minimizes noise and dust
- Works great on granular rubber and simulated turf
- Optional rotary broom, remote hose attachment, and edge brush for cleaning against fences, curbs, and buildings

We Stand Out from the Competition

HARPER INDUSTRIES, INC.
 151 East Hwy. 160
 Harper, Kansas 67058
 info@harperindustries.com

Greenest
800-835-1042
www.harperindustries.com

Fill in 133 on reader service form or visit <http://oners.hotims.com/13973-133>

Membership Application

SportsTurf MANAGERS ASSOCIATION

Experts on the Field, Partners in the Game.

Name _____ Title _____

Employer/ Facility _____

Business Home

Address _____

City _____ State _____ Zip _____

Home phone _____ Work phone _____ Cell phone _____

Fax _____ Email _____

Signature _____

Direct Supervisor Name _____

Membership Category:

- Sports Turf Manager \$110
 Sports Turf Manager Associate* (Additional member(s) from the same facility) \$75

Please select the primary facility type where you are employed:

- Professional Sports Higher Education Schools K-12 Parks and Recreation

Academic \$95

Student (verification of enrollment) \$25

Commercial \$295

Commercial Associate* (Additional member(s) from the same commercial company) \$75

Affiliate (Person who is indirectly or on a part-time basis, involved in the maintenance/management of sports fields) \$50

Chapter Dues (contact headquarters for amount)
Chapter name) _____ \$ _____

Contribution To SAFE Foundation (research, education and scholarship): \$ _____

Total Amount Enclosed: \$ _____

Payment Method:

Check Money Order Purchase Order #: _____

Credit Card: Mastercard Visa American Express Discover

Name on Card _____

Card #: _____ Exp. Date: _____

Signature: _____

*There must already be a national sports turf manager from your facility or commercial member from your company before you may sign up in the Associate category.

Phone: 800-323-3875 www.sportsturfmanager.org

Fill in 139 on reader service form or visit <http://oners.hotims.com/13973-139>

Fax to: (785) 843-2977

Or mail with payment to:
Sports Turf
Managers Association
P.O. Box 414029
Kansas City, MO 64141

"I know I am a better sports turf manager because of this association. As sports turf managers, we take the challenge seriously to make our fields the best possible for the next game. The resources I have access to through STMA helps me do it."

— Bob Campbell, CSFM
Higher Education
Membership Segment

Cut
Here

to
Fax
or
Mail

Having a Fall or Winter Chapter Event?

If your chapter is having an event, you may be required to present a Certificate of Insurance to the facility provider. Not to worry, STMA provides this service at no charge to each affiliated chapter in good standing.

To request a Certificate of Insurance, please fill out the form in the Chapter Development Kit, which is on STMA's chapter page under Chapter Resources on the web site (www.STMA.org). The insurance information and form is on pages 8 and 9. Please allow up to 3 weeks for its processing by our insurance agent. The policy, which covers general liability, has limits of \$1 million per occurrence and \$2 million aggregate. The D&O policy (Directors and Officers), which covers professional actions, has a limit of \$1 million with a \$2,500 deductible. ■

Chapter Sponsors



JOHN DEERE

Hunter[®]
The Irrigation Innovators



stabilizer
SOLUTIONS

syngenta

Alpine Services, Inc.
Premium Athletic Fields ... For All Sports

WE'RE ON YOUR TURF.
MAKING LIFE EASIER

THE TD-460, TYCROP'S DEDICATED LARGE AREA TOP DRESSER, WILL
HAVE EVEN THE MOST EXPANSIVE TURF SAFE FOR PLAY IN NO TIME FLAT.

1-800-845-7249 WWW.TYCROPTURF.COM

FINANCING PROVIDED BY:



WELLS FARGO FINANCIAL



Fill in 130 on reader service form or visit <http://oners.hotims.com/13973-130>



STMA Affiliated Chapters Contact Information

Sports Turf Managers Association of Arizona: www.azstma.com.

Chesapeake Chapter STMA (formerly Mid-Atlantic Athletic Field Managers Organization - MAFMO Chapter STMA): www.ccstma.org.

Colorado Sports Turf Managers Association: www.cstma.org.

Florida #1 Chapter: 954/782-2748

Gateway Chapter Sports Turf Managers Association: www.gatewaystma.org.

Georgia Sports Turf Managers Association: 706/542-7859.

The Greater L.A. Basin Chapter of the Sports Turf Managers Association: www.stmalabasin.com.

Illinois Chapter STMA: 847/263-7603.

Intermountain Chapter of the Sports Turf Managers Association: www.imstma.org.

Iowa Sports Turf Managers Association: www.iowaturfgrass.org.

Keystone Athletic Field Managers Org. (KAFMO/STMA): www.KAFMO.org.

Kentucky Sports Turf Managers Association: www.kystma.org.

Michigan Sports Turf Managers Association (MiSTMA): www.mistma.org.

Minnesota Chapter STMA: www.mstma.org.

MO-KAN Sports Turf Managers Association: www.mokanstma.com.

New England STMA (NESTMA): www.nestma.org.

Nebraska Sports Turf Managers Association: 402/441-4425.

North Florida STMA Chapter: 850/580-4026.

Northern California STMA: 916/366-8350.

Ozarks STMA: 417/862-6974.

Sports Turf Managers of New York: www.stmony.org.

Sports Field Managers Association of New Jersey: www.sfmanj.org.

Ohio Sports Turf Managers Association (OSTMA): www.ostma.org.

Pacific Northwest Sports Turf Managers Association: www.pnwstma.org.

Southern California Chapter: www.socalstma.com.

South Carolina Chapter of STMA: www.scstma.org.

Texas Sports Turf Managers Association: 866/897-8621.

Tennessee Valley Sports Turf Managers Association (TVSTMA): www.tvstma.org.

Virginia Sports Turf Managers Association: http://www.vstma.org.vt.edu/.

Wisconsin Sports Turf Managers Association: www.wstma.org.

FORMING CHAPTERS:

Nevada STMA Chapter: 702/433-3113.

MARKETPLACE

GRACO FIELDLAZER / PAINT SALE!
SAVE \$1,045.00 ON OUR PAINT & MACHINE PACKAGE
 WITH THE PURCHASE OF :
 16 PAILS OF OUR 77-30 OR 88-30 BRILLIANT WHITE PAINT

- * \$300.00 GRACO BUCKS REBATE
- * 16 PAILS OF PAINT
- * FIELDLAZER COST OF \$1795.00
- * FREE FREIGHT FOR ALL

PACKAGE PRICE
 GRACO FIELDLAZER & PAINT

#77-30KIT **\$2,514.20** OPTICALLY BRIGHT
 #88-30KIT **\$2,674.20** OPTICALLY BRIGHT

THESE PAINTS ARE HIGH ENERGY FORMULATED FOR:
 GREAT ATOMIZATION...SHARPER LINES...EASY MIX...
 LESS SETTLING...LONGER SHELF LIFE...HIGH SOLIDS

AEROSOL FIELD PAINT

- Brightest White
- 12 Brilliant Colors
- Low VOC's
- Fits most machines

\$44.95 / 12 CAN CASE WHITE
FREE SHIPPING
 COLORS \$48.95 /CASE
 Call for QUANTITY PRICES

MP Custom Stencils
FREE LINE ART... LET US DESIGN YOUR FIELD

800-426-0774
MISSOURI TURF PAINT

SINCE 1947

Hoze nozzles so good...
 Spray patterns so remarkable...
 ...they're patented.

3/4" hose thread standard (pictured with optional brass valve and 1" adaptor)

Precision™ Hose End Nozzles

HIGH-FLOW NOZZLES 35 GPM in 100 ft. of 1" hose	MEDIUM-FLOW NOZZLES 15 GPM in 100 ft. of 3/4" hose
CYCLONE™ Syringe and Water • Uniform precipitation entire throw • Vertical water curtain	RAINMAKER™ Syringe and Spot Water • Mass of uniform droplets • Fan shaped spray
CLOUDBURST™ Dry Spot Specialist • Mass of uniform droplets • Fan shaped spray	RAINBOW™ Baseball Skins, Greens and General Landscape • Fine droplets

The incredible MAGNUM™

Variable spray workhorse with **SOLID METAL** internal that won't break, won't stick.

Underhill™
 866-863-3744 • www.underhill.us

Earth & Turf **NEW!** Topdressers

The Earth & Turf
MultiSpread™ 320



**Designed for
Sports Turf Managers!**

- 1-cubic yard capacity Topdresser with Exclusive, Wide-spread Beater!
- For Schools & Universities, Athletic Fields, Lawn Care Professionals, and Golf Courses!
- Spreads Topdressing Materials, Infield Mix, and Grass Clippings!
- Two-Wheel Ground Drive with 26 x 12.00-12 Turf Tires!

Other Earth & Turf topdressers available from 3 cu. ft. capacity to 15 cu. ft. capacity. See our complete line at:

www.earthandturf.com

888-693-2638

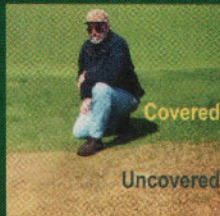
Fill in 142 on reader service form or visit <http://oners.hotims.com/13973-142>

Supreme-Green™ Turf Growth Cover

Supreme-Green is a multi-purpose turf growth cover made of a specially designed material to provide early green-up, accelerated germination and winter protection. The Supreme-Green cover encourages root development and rapid growth while extending your spring and fall seasons.

Supreme-Green turf growth cover is specifically engineered to promote earlier openings by 2-3 weeks.

- Reduces seed loss
- Promotes earlier root establishment
- Accelerates Germination
- Reduces frost and ice-damage
- Porous to allow water and air circulation
- Mildew and rot resistant
- Quick turf repairs



Specifications:

- Made of tough woven non-coated polyethylene material
- UV treated for long life
- Green tint for best heat build-up
- One-piece construction
- Comes complete with anchor pegs and storage bag

279 Humberline Dr. Etobicoke, Ontario M9W 5T6

Phone: 1-800-837-8961

Fax: (416) 798-1342

E-mail: sales@coverttechfab.com

Website: www.coverttechfab.com

Fill in 145 on reader service form or visit <http://oners.hotims.com/13973-145>



ATHLETIC SURFACE

Red Warning Track Material

Red Infield Fines

Red Infield Conditioner

Red Diamond Absorb

Red Mound Packing Clay



Order in Bulk, Supersacks, or 50 lb. Bags



TOLL FREE 888-749-2880 · PH 334-749-2880

P. O. Box 150, Cusseta, AL 36852

sales@rareredrock.com · www.fuller5.net

Fill in 143 on reader service form or visit <http://oners.hotims.com/13973-143>

One Field One Line of Products



A New Foundation for Sports



Introducing Klacon SS RED

For Your Nearest Distributor
WESSCO, INC. 800-650-9322
WWW.KLAWOG-KLACON.COM

Fill in 144 on reader service form or visit <http://oners.hotims.com/13973-144>

Relax, RTF Sod
makes your job easier.



RTFsod.com

It's simple to
have a field that
looks this good.
Self-repairing RTF Sod:
Simply perfection!

- ▶ Self-repairing to fill bare spots
- ▶ Strong, deep root system
- ▶ Drought tolerant
- ▶ Excellent color and density

RTF is a registered trademark of Barenbrug USA, U.S. Patent No. 6,677,507

Fill in 146 on reader service form or visit <http://oners.hotims.com/13973-146>

THATCH MASTER TM-720



-Heavy Duty-
-Low Maintenance-

Turf Specialties, Inc.

Call for price, demo or CD

800-201-1031

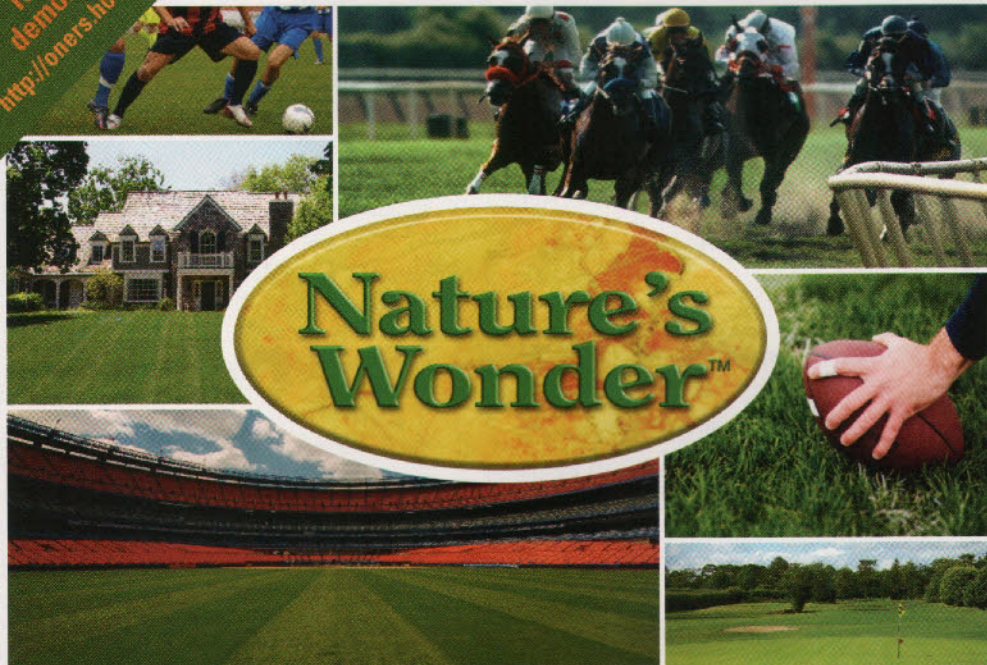
www.turfspecialties.net

Fill in 147 on reader service form or visit <http://oners.hotims.com/13973-147>

WHY APEX-10?

DEEPER ROOTS | STRONGER TURF | INCREASED BIOMASS

To see an online demonstration, visit:
<http://oners.hotims.com/14481-412>



Natures Wonder APEX-10 is an organic Peat Humic Substance made from highly humified North American Peat. APEX-10 organic properties are over 88.5% volatile and 100% of the humic acid is plant available. These Biostimulating qualities of APEX-10 have been proven in university studies and in the field to deliver the highest results with the lowest application rate.

WITH THESE BEING JUST A FEW OF THE PROVEN RESULTS USING APEX-10, THE REAL QUESTION IS...

Why Not APEX-10?

1.856.222.4675

www.natureswonder.com

900 BIRCHFIELD DRIVE | MOUNT LAUREL N.J. 08054



Reviewed by OMRI and Registered for Organic Crop Production by USDA Standards.

FROM THE EARTH FOR THE EARTH

Fill in 153 on reader service form or visit <http://oners.hotims.com/13973-153>

SportsTurf MANAGERS ASSOCIATION Online Training

STMA Members - \$30 each
Non-members - \$50 each

Session OC01 - Schools K-12

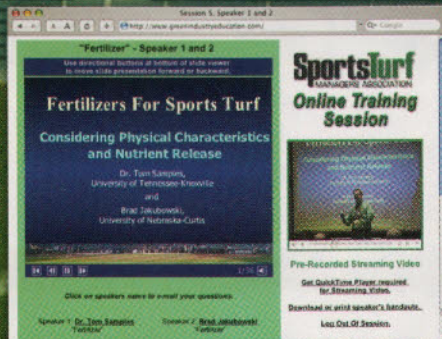
- Speaker 1 - Floyd Perry, Grounds Maintenance Services
- Speaker 2 - Dr. Grady Miller, University of Florida
- Speaker 3 - John Mascaro, Turf-Tec International
- Speaker 4 - Dr. John Cisar, University of Florida

Session OC02 - Parks & Recreation

- Speaker 1 - Preston Courtney, Disney Wide World of Sports
- Speaker 2 - Floyd Perry, Grounds Maintenance Services
- Speaker 3 - Bill Berry, City of Rock Hill
- Speaker 4 - Richard Sanger, Sarasota County

Workshop OC03 - Developing A Master Plan

- Speaker 1 - Francois Hebert, Consultant



Workshop OC04 - Building Athletic Fields

- Speaker 1 - Dr. Chuck Darrah, CLC Labs
- Speaker 2 - Boyd R. Montgomery II, The Toro Company
- Speaker 3 - Mark Heinlein, The Motz Group

Workshop OC05 - Fertilizer

- Speaker 1 - Brad Jakubowski, University of Nebraska
- Speaker 2 - Dr. Tom Samples, University of Tennessee

Demonstration OC06 - Outdoor Demonstrations

- Speaker 1 - Dr. Roch Gaussin
- Speaker 2 - Floyd Perry, Grounds Maintenance Services
- Speaker 3 - Preston Courtney, Disney Wide World of Sports

For STMA Online Training information and registration, visit

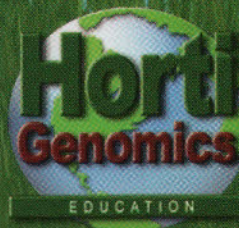


GreenIndustryEducation.com

SportsTurf Managers Association (800) 323-3875

Fill in 154 on reader service form or visit <http://oners.hotims.com/13973-154>

BECOME A CERTIFIED SUSTAINABLE LANDSCAPER



Visit HortiGenomics.com

Deminishing resources and client demands have made Sustainable Landscapes extremely important. This valuable certification is a must for any industry professional.



GreenIndustryEducation.com

Your Continuing Education Oasis

877.964.6222

Fill in 155 on reader service form or visit <http://oners.hotims.com/13973-155>



Advertisers' Index/Reader Service Information

Three fast and easy ways to get additional information on products and services in this issue:

1. Visit the Web address next to the advertiser's name for the ad in this issue.
2. Go to sportsturf.hotims.com to search for products by category or company name. Plus, link directly to advertisers' Web sites, or request information via e-mail or by fax.
3. Complete the reader service information below. Write in the reader service number from the product or circle advertiser from the index, copy, and fax to (416) 620-9790 or mail to SportsTurf, PO Box 5167, Buffalo, NY 14205-5167.

Please write the reader service number for **FREE product information** in the boxes above. If this is not your copy of ST, please go to www.submag.com/sub/tf to sign up for a **FREE one year subscription** of your own.

SportsTurf ADVERTISERS' INDEX

Advertiser	Web Address	Fill in #	Page #
Aerway/Holland Equipment	http://www.oners.hotims.com/13973-125	125	29
Airfield Systems	http://www.oners.hotims.com/13973-134	134	28
Barenbrug USA	http://www.oners.hotims.com/13973-118	118	17
Beacon Athletics	http://www.oners.hotims.com/13973-135	135	18
BLEC USA	http://www.oners.hotims.com/13973-132	132	34
Broyhill	http://www.oners.hotims.com/13973-129	129	34
Covermaster	http://www.oners.hotims.com/13973-120	120	20
Covertch	http://www.oners.hotims.com/13973-145	145	46
Dakota Peat	http://www.oners.hotims.com/13973-119	119	19
Deweze-Goossen	http://www.oners.hotims.com/13973-133	133	42
Diamond Pro	http://www.oners.hotims.com/13973-113	113	9
Diversified Sports Specialties	http://www.oners.hotims.com/13973-148	148	47
Earth & Turf	http://www.oners.hotims.com/13973-142	142	46
Empire State Green Industry Show	http://www.oners.hotims.com/13973-137	137	39
Ewing Irrigation	http://www.oners.hotims.com/13973-122	122	23
First Products	http://www.oners.hotims.com/13973-116	116	14
Fuller Five Landscape Supply	http://www.oners.hotims.com/13973-143	143	46
Graden USA	http://www.oners.hotims.com/13973-152	152	47
Green Industry Education	http://www.oners.hotims.com/13973-154	154, 155	48
Green Industry & Equipment Expo	http://www.oners.hotims.com/13973-136	136	38
GreensGroomer	http://www.oners.hotims.com/13973-115	115	13
GreenOne	http://www.oners.hotims.com/13973-138	138	39
Horizon Turf	http://www.oners.hotims.com/13973-131	131	35 (regional)
Hunter Industries	http://www.oners.hotims.com/13973-123	123	25
Jacobsen	http://www.oners.hotims.com/13973-157	157	52
John Deere	http://www.oners.hotims.com/13973-112	112	5
KRain	http://www.oners.hotims.com/13973-111	111	3
Klawog-Klacon by Wessco	http://www.oners.hotims.com/13973-144	144	46
Krylon Products Group	http://www.oners.hotims.com/13973-128	128	41
Laser Leveling	http://www.oners.hotims.com/13973-110	110	2
Missouri Turf Paint	http://www.oners.hotims.com/13973-141	141	45
Nature's Wonder	http://www.oners.hotims.com/13973-153	153	48
Partac Peat/Beam Clay	http://www.oners.hotims.com/13973-127	127	31
Pennington Seed	http://www.oners.hotims.com/13973-117	117	15
RainMaster Irrigation	http://www.oners.hotims.com/13973-126	126	30
RedMax	http://www.oners.hotims.com/13973-160	160	33
Rotadairon Emrex	http://www.oners.hotims.com/13973-149	149	47
RTF Turf Producers Association	http://www.oners.hotims.com/13973-146	146	46
Sports Turf Managers Association	http://www.oners.hotims.com/13973-139	139	43
Stabilizer Solutions	http://www.oners.hotims.com/13973-151	151	47
SubAir Systems	http://www.oners.hotims.com/13973-150	150	47
TifSport	http://www.oners.hotims.com/13973-114	114	10
Turf Specialties	http://www.oners.hotims.com/13973-147	147	46
Turco Manufacturing	http://www.oners.hotims.com/13973-121	121	21
TYCROP	http://www.oners.hotims.com/13973-130	130	44
Underhill International	http://www.oners.hotims.com/13973-140	140	45
Varicore Technologies	http://www.oners.hotims.com/13973-156	156	51
World Class Athletic Surfaces	http://www.oners.hotims.com/13973-124	124	27

Please complete this form in its entirety to receive your product information.

1. **What is your company's primary business?** (check **ONLY ONE**)
 Sports Complex Athletic Field and/or Park Architect/Designer
 School, College or University Park Other (please specify) _____
2. **Which of the following best describes your title?** (check **ONLY ONE**)
 A EXECUTIVE/ADMINISTRATOR — President, Owner, Partner, Director, General Manager, Chairman of the Board, Purchasing Agent, Athletic Director
 B MANAGER/SUPERINTENDENT — Superintendent, Landscape/Ground Maintenance Manager, Foreman, Supervisor
 C GOVERNMENT OFFICIAL — Government Commissioner, Agent, Other Government Official
 D SPECIALIST — Architect, Designer, Consultant, Agronomist, Horticulturist, Certified Specialist
 COACH E Other (please specify) _____
3. **Do you have the authority to buy, specify or recommend products and/or services for your business or organization?**
 Yes No
4. **Yearly operating expenditures** (excluding salaries)
 Over \$1 million \$50,001 - \$100,000
 \$500,001 - \$1 million \$25,001 - \$50,000
 \$100,001 - \$500,000 \$25,000 and under
5. **Please also send a free subscription to the following people at the same location**
 Name _____ Title _____
 Name _____ Title _____

Yes, Please start/continue my subscription to SportsTurf

No, thank you.

Signature: (required) _____

Date: _____

Name: (please print) _____

Title: _____

Company: _____

Address: _____

City: _____

State: _____

Zip: _____

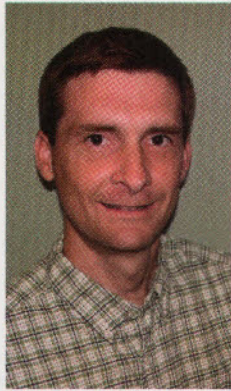
Phone: _____

Fax: _____

Email: (required) _____

Back to school (gulp!)

What can I do to get my [neglected] field ready for this fall's football season?



BY DR. GRADY MILLER
Professor, North Carolina State University

Questions?
Send them to
Grady Miller at
North Carolina State
University, Box 7620,
Raleigh, NC 27695-
7620, or email
grady_miller@ncsu.edu

Or, send your
question to
David Minner at
Iowa State University,
106 Horticulture Hall,
Ames, IA 50011
or email
dminner@iastate.edu.

That is the short version of the question from a recent phone call. A site visit was helpful to determine the full extent of the situation before suggesting a likely path of action. Unfortunately this question has been replayed several times this summer. For most of you this is not a question you would have for your own fields, but I imagine many of you get similar questions.

In my years of visiting "school fields," I have concluded that the range in field management is greater for these fields than any other field category. Of course not all school fields are on the low end of the scale. We also have great school athletic fields managed by knowledgeable and talented people. Just look at the annual "Field of the Year" award recipients. But there is no denying that there are some very poor athletic fields managed by people with little or no resources and often with very limited turf maintenance knowledge.

It really troubles me to use the word "neglect" in terms of field maintenance. But I have seen several fields this year that were abandoned for months – no irrigation, no aeration, no pest control, and no mowing. That constitutes neglect in my book. While some fields may only require minimum maintenance in the summer, all fields will require mowing.

At this high school, I was walking across a grassy area when I was asked what I thought of their football field. At the time I would have sworn I was standing in a hay meadow that needed fertilization rather than on the 50-yard line of a football field. The grass was at least a foot high. It was mostly bermudagrass but was also peppered with various annual and perennial weed species. I asked the school representatives that were walking three steps behind me about their mowing practices. Their response was that after the football season ended (8 months ago) that the field was not needed so they saved money by stopping all maintenance practices. They said this allowed their grounds person to concentrate more time preparing and maintaining the baseball field in the spring. They had just one person to maintain all their school grounds, with field maintenance labor supplemented with volunteers.

As we stood knee deep on the football field they asked, "So what do we need to do to get the field ready for football practice in 4 weeks?" This group was lucky that they had a decent stand of bermudagrass, since the grass is so resilient to neglect. The plan of attack was to get a local farmer to come cut the grass down to about 4 inches using a Bush Hog mower. Luckily, it had been a dry summer and they had not irrigated, so the field was firm enough that the chevron type

tractor tires on a large tractor would not cause rutting. The larger equipment was necessary to remove the excessive growth that a smaller turf mower could not handle.

After the initial mowing, volunteers hand raked the field and removed the debris. There were some other, less labor intensive options, but that is the one they decided was easiest (perhaps cheapest) for them. Then they used their smaller mower with three rotary blades to provide a finishing cut at about 2 inches. This is the same commercial riding rotary mower that is used for all the school grounds. Because the turf had grown so much vertically there was virtually no leaf tissue down in the canopy at 2 inches. So, they were left with bermudagrass stem tissue. The field looked like straws stuck in the ground and they were spaced far enough apart that a good bit of ground was exposed. This was alarming to the school representatives, but I assured them all would be fine in just a few weeks.

The field had an irrigation system and most heads worked. After a few repairs and adjustments the coverage was adequate to reach most of the field. A 1-year old soil test indicated that the pH was a little low (about 5.8), but not to a level that caused me too much concern. The phosphorus index was high but the potassium index was low. I recommended they get a new soil test but for now to go ahead and add a fertilizer with about equal parts nitrogen and potassium, which they did immediately after mowing. They added 1 lb. N/1,000 sq. ft. that day and I suggested they add a similar amount about 3 weeks later. The grass had an excellent root system before we scalped it down. Now we just needed to grow it new shoots.

After a few days the bermudagrass began putting out new leaves. I went ahead and suggested they use their roller-type aerifier to loosen the soil and then drag the field to break up the cores. Within a couple of weeks the field was mostly green with about half a dozen areas that still looked thin. These were mostly areas that had heavier weed populations back before it was mowed. I believe with another fertilizer application, regular irrigation, and a couple of more weeks, the field will be in good shape. It won't be perfect, but it will be a much better than playing football in a hay meadow.

In the end, the school was lucky that: 1) They decided to ask for help and then followed the suggestions in a timely manner; 2) started with a decent stand of bermudagrass; 3) had a working irrigation system; and 4) had good weather and adequate time for the grass to recuperate.

Hopefully next year they will be able to keep up with a minimum maintenance program through the spring and summer rather than undergoing an extreme makeover. But based on their current infrastructure and the success they had this year with a last-minute effort, I am a little afraid they may try to repeat it again next year. ■