

"Staphylococcal viability was longest on . . . polyethylene plastic (22 to 90 days)." [5]

As recent as May 2007, an independent laboratory tested an indoor synthetic turf field at a Midwest Division I school and found five samples with significant indication of presumptive staph on separate areas of the field tested [6]. Other independent studies conducted on five separate indoor and outdoor synthetic turf systems at multiple college and professional athletic facilities confirmed the presence of staph on three of the five fields tested [7]. A Clinical Infectious Disease study in 2004 showed that players who have sustained turf burns are seven times more likely to acquire an infection compared to players without turf burns [8].

Dr. Gregory M. Colores, a Department of Biology professor at Central Michigan University, states that, "CMU has been helping in the development of test techniques appropriate for the detection and characterization of bacteria from synthetic turf. Using

PCR (Polymerase Chain Reaction) we have confirmed that there are detectable levels of bacteria that can be retrieved from synthetic turf surface samples."

With the presence of fluids such as sweat, blood, spit, vomit and urine or bird droppings, and high physical contact, sports played on synthetic turf fields could be an ideal place where the non-discriminatory staph bacteria can flourish or serve as a transmission point. Staph's proven ability to live on synthetic turf systems and in other athletic settings can lead to the conclusion that MRSA can survive here also. In fact, according to the New England Journal of Medicine, during the 2003 football season in which eight MRSA infections occurred among the Rams players, all of the infections developed at turf-abrasion sites [9].

Defending against MRSA

In the case of MRSA, prevention is key. The CDC offers the following tips for microbial safety:

- Keep your hands clean by washing then thoroughly with soap and water.
- Keep cuts and scrapes clean and covered with a bandage until healed.
- Avoid contact with other people's wounds or bandages.
- Avoid sharing personal items such as towels or razors.
- Regularly clean surfaces of gym equipment with disinfectant before and after use.

The antimicrobial treatment TurfAide, a product of the Sports Antimicrobial System (SAS) from SportCoatings, Rochester Hills, MI, is being used now by the Minnesota Vikings, Cleveland Browns, Ohio State University, and Virginia Tech, and many others, as well as at the high school level. SAS is designed to inhibit and minimize microbial contamination on all sport surfaces for extended periods.

SAS is a family of treatments that are powered by the ÆGIS Microbe Shield technology.

EVERGREEN™ Turf Blankets... ...trusted around the world!

**"Results Outstanding...,
Could Not Believe..."**

wrote **Dann Daly**, Park Maintenance Supervisor,
Parks & Recr. Dept., North Smithfield, RI

- Earlier spring green-up
- Faster seed germination
- Deeper root development
- Delays dormancy in fall
- Ideal winter blanket
- 3 & 7 yr. warranty covers
- Best for quick turf repairs
- Available in any size

**Want to know more?
CALL TOLL FREE
1-800-387-5808**

**COVERMASTER™
COVERMASTER
COVERMASTER**

MASTERS IN THE ART OF SPORTS SURFACE COVERS

COVERMASTER INC., 100 WESTMORE DR. 11-D, REXDALE, ON, M9V 5C3 TEL 416-745-1811 FAX 416-742-6837



Covers for football and soccer fields are also readily available.



Covered...

Uncovered...



It works on the greenhouse principle, every time!

covermaster.com

E-MAIL: info@covermaster.com



Fill in 131 on reader service form or visit <http://oners.hotims.com/13974-131>

FACILITY & OPERATIONS

gy, which has been safely used in consumer goods and medical applications for more than 30 years. Registered with the EPA, the shield imparts an invisible layer of antimicrobial protection that will not leach any chemicals or heavy metals into the environment and will not rub off onto a player's skin.

"Using the SAS system is like having an airbag in your car," said Mike Goforth, Director of Athletics Training at Virginia Tech "You may not be able to see it, but the parents of our athletes can feel confident knowing that their sons and daughters are training in safe facilities when they come to Virginia Tech."

On a microscopic level, the SAS treatments bond to the surface and create a matrix of positively charged sword-shaped molecules. Upon direct contact, the membrane of the microbe is physically ruptured by a stabbing and electrocution action. Since the treatment is not consumed or dissipated, it remains active 24/7. ■

Sources:

1. "MRSA In Healthcare Settings". Centers for Disease Control and Prevention. October 6, 2006.
2. "The Burden of Staphylococcus aureus Infections on Hospitals in the United States: An Analysis of the 2000 and 2001 Nationwide Inpatient Sample Database." Gary A. Noskin, MD. Archives of Internal Medicine. Vol. 165 No. 15, Aug 8/22, 2005.
3. "Menace in the Locker Room". Phil Gross. Sports Illustrated. February 23, 2006.
4. "Healthbeat: How to stop Staph infections". Jen Christensen. Hoi News. January 4, 2006.
5. "Survival of Enterococci and Staphylococci on Hospital Fabrics and Plastic." Alice N. Neely and Matthew P. Maley. Journal of Clinical Microbiology. Feb. 2000, p. 724-726, Vol. 38, No. 2.
6. "Microbial Retrievals from an Indoor Synthetic Field at the University Field # 8." White IEQ Consulting, LLC.
7. "Microbial Analysis of Synthetic Turf". January 2007.
8. "A High-Morbidity Outbreak of Methicillin-Resistant Staphylococcus aureus among Players on a College Football Team, Facilitated by Cosmetic Body Shaving and Turf Burns." Elizabeth M. Begier. Clinical Infectious Diseases. Nov. 15, 2004.
9. "A Clone of Methicillin-Resistant Staphylococcus aureus among Professional Football Players". Sophia V. Kazakova. The New England Journal of Medicine. Volume 352:468-475. Feb. 3, 2005.

SANITIZE IT ALL IN MINUTES



The SaniTurf by Broyhill will have you sanitizing large areas quickly with a 30' spray swath at 40 psi. SaniTurf is designed to work with TurfStat Pro™ and is ideal for synthetic athletic surfaces, artificial turf, all purpose flooring and indoor field house turf.

SaniTurf

Broyhill
when only perfection will do

800.228.1003, ext. 34 • sales@broyhill.com • www.broyhill.com

THE GAME MUST GO ON.

An Airfield is the ultimate sports turf drainage system whether you are playing on natural or artificial turf.

Artificial Turf Benefits:

- Drains remarkably faster
- Reduces installation time
- Reduces G-Max
- Eliminates rubber migration
- Eliminates standing water
- Strong enough for vehicles
- Below entire playing surface
- Air void for heating and cooling
- Allows flushing and sanitizing
- Maintains level playing surface

Natural Turf Benefits:

- Drains remarkably faster
- Reduces installation time
- Reduces irrigation requirements
- Extends playing season
- Eliminates standing water
- Reduces maintenance costs
- Below entire playing surface
- Superior perched water table
- Greater root mass
- Gas circulation through soil



405.359.3775
airfieldsystems.com

Fill in 132 on reader service form or visit <http://oners.hotims.com/13974-132>

Fill in 133 on reader service form or visit <http://oners.hotims.com/13974-133>

John Mascaro's Photo Quiz

Answer:
from page 14



The Soccer goals are not in correct position because the field has moved. This photo is from the Saint Louis Soccer Park during the summer flood of 1993. The park is located between the Mississippi and the Missouri Rivers and during the flood, the synthetic Astroturf field floated off of the blacktop foundation. In fact, the entire synthetic turf soccer field became a large raft and is actually floating 4 feet off the ground, notice the field height relative to the soccer goal. Synthetic turf in a flood plain can be risky... even the new rubber infill systems can pose a risk as the rubber has a potential to float away.

Photo submitted by Dr. Dave Minner, Iowa State University Horticulture Dept, Ames, Iowa.

If you would like to submit a photograph for John Mascaro's Photo Quiz please send it to Turf-Tec International, John Mascaro, 1471 Capital Circle NW, Suite # 13, Tallahassee, FL 32303 or email to john@turf-tec.com. If your photograph is selected, you will receive full credit. All photos submitted become property of SportsTurf Magazine.

Beam Clay®

Baseball Diamond Mix
Pitcher's Mound Mix
Home Plate Mix
Infield Conditioner
Mound Bricks
Mound Top-Dressings
Permanent Pitcher's Mound
& Batter's Box Pads
Warning Track

Pro's Choice®

Diamond Pro®

Stabilizer®

Hilltopper®

Diamond Dry®

Nail Drags & Scarifiers

Drag Mats

Cocoa Mats

Infield Grooming Equip.

Mound Bricks

Mound Building Tools

Batter's Box Templates

Cleat Cleaners

Batting Practice Screens

Batting Practice Mats

Backstops

Batting Cages

Batting Tunnels

Search our entire Catalog

Other Sports

YOUR "ONE-STOP SOURCE" FOR AMERICA'S BASEBALL & SPORTS TURF SURFACES & SUPPLIES!



A SUPPLIER TO EVERY MLB TEAM.
OVER 150 MINOR LEAGUE TEAMS, OVER 700 COLLEGES,
AND THOUSANDS OF TOWNS & SCHOOLS WORLDWIDE!

800-247-BEAM
www.BEAMCLAY.com

OVER 200 INFIELD & SPORTS TURF PRODUCTS
INCLUDING REGIONAL INFIELD MIXES & RED WARNING TRACKS
BLENDED FOR EVERY STATE & CLIMATE
FROM BULK PLANTS NATIONWIDE!

"The best infield mix I've ever used!"
— GEORGE TOMA

FenceGuards™

DuraPad™
On-Deck Circles

Hollywood® & Schutt® Bases

Rogers® Break-Away Bases

Soft-Touch™ Bases

Mautz® Athletic Field Paints

Athletic Field Stencils

MarkSmart™
Layout Systems

Jiffy® Line Strippers

Field Marking
Equipment & Material

Permanent Foul Lines

Yankee® Rakes

Midwest Rakes

Rain Covers

Safety Fencing

Windscreen

Wall Padding

Ball & Barrier Netting

Benches / Bleachers

Watering Equipment

Water Removal Equipment

Geotextile Fabrics

Turf Blankets

Top-Dressing

Foul Poles / Flag Poles

Fill in 134 on reader service form or visit <http://oners.hotims.com/13974-134>

New aggregate product being used for sports field drainage



When landscape architect John Collver of TSH Engineers, Architects & Planners began researching methods and materials to address drainage issues for the construction of an athletic field for the minor league Clarington Tiger-Cats in Ontario, Canada, he became unsure whether or not a conventional tile drain would be the best solution for the challenge of

draining a heavily used athletic field.

Collver decided on an alternative to systems historically used for sports fields, the *EZflow* drainage system. This system, manufactured by Ring Industrial and formerly used mainly for septic drain fields, features a recycled, expanded polystyrene product as an aggregate rather than gravel. The product is constructed with polystyrene beads com-

According to Wile, "This product could very well revolutionize the way we address drainage. It lowers labor and equipment costs, and it takes approximately half the time to install."

pletely surrounding and affixed to the outside of a drainage pipe. This provides a consistent infiltrative area for absorption and removal of water. The geosynthetic drainage beads are uniform in size and shape for optimal permeability, the company says. The 10-inch diameter product is encased in netting and covered by geotextile, and each 10-foot length weighs 7 pounds, says EZflow marketing manager Trey Brady. Ring Industrial holds a patent on both the product and the process.

The system can be covered with native soil instead of sand. Native soil will recuperate faster than sand, and it can take more of a beating from players. Also, when using this product, the

slope around the field can be reduced making it easier to view the action on the field. Collver estimates the overall cost savings were 25%.

When this system was specified for the job, installer Edwin Wile of DoITurf Inc. had many questions and concerns, as he was used to constructing athletic fields with traditional gravel and tile. He found that the installation process was simple. First, the subgrade was leveled at 1 degree. Then trenches were dug 12 inches deep and 16 inches wide in a herringbone pattern. The pipe was placed in the trench, covered with Kraft paper (provided by the supplier), and then topped with screened native topsoil. Approximately 5,200 linear feet of EZflow

was installed for this job.

According to Wile, "This product could very well revolutionize the way we address drainage. It lowers labor and equipment costs, and it takes approximately half the time to install."

Wile measures the success of a drainage system on how well it handles the freeze/thaw cycle in Canada. The product has performed well over the last cycle, and there has been no settlement. ■

This article was supplied by Jennings Communications, Atlanta, GA. For more information see www.ringindustrial.com and click on "Product Information."

BLECAVATOR

CAN YOUR RAKE/TILLER DO THIS?



864.225.3666
www.blecusa.com

RESHAPING THE FACE OF NATURE

BLEC
USA, INC.

Fill in 135 on reader service form or visit <http://oners.hotims.com/13974-135>

The Beacon Advantage

It's the reason the 2004 Athens Olympics and Major League Baseball teams trust us.



And, it's why you can, too.

BEACON
ATHLETICS

FIELD MAINTENANCE & TRAINING EQUIPMENT
800-747-5985 www.BeaconAthletics.com

Fill in 136 on reader service form or visit <http://oners.hotims.com/13974-136>



SLF-1880

Jacobsen's SLF-1880 weighs just 2,200 lbs. and reduces turf compaction. The patented vertical lift-arm mechanism allows the reels to follow uneven or undulating terrain without scalping or sacrificing quality-of-cut. Equipped with individual 18-inch wide reels that produce an 80-inch cut, the SLF-1880 is available in both gas and diesel two- and four-wheel drive models. The FlashAttach reel mounting system allows simple, quick reel removal for maintenance.

Jacobsen

For information, fill in 054 on reader service form or see <http://www.oners.hotims.com/13974-054>

2653B trim, surrounds mower

John Deere's 2653B mower boasts improved traction, operator comfort and serviceability. The new traction system provides flow equally to each wheel motor, reducing slippage and improving hill climbing, while still maintaining the well-known quality of cut. The redesigned operator station provides easier access to operator controls, better access on and off the machine, and four additional inches of legroom. Two-post ROPS standard.

John Deere

For information, fill in 055 on reader service form or see <http://www.oners.hotims.com/13974-055>



The Best Dressed Sports Fields Start Out In Our Hands.



America's leading sports fields use America's best field marking paints and custom stencils. When great teams choose to decorate their fields, they turn to World Class.

**WORLD
CLASS**
athleticsurfaces

We Make The Games Look Better • www.worldclasspaints.com • 1-800-748-9649

Fill in 163 on reader service form or visit <http://oners.hotims.com/13974-163>

**There may be a rain delay
but there won't be a drainage delay.**



*Lightweight, flexible sections
make for quick work in the field.*

Sometimes you win, sometime you lose, sometimes it rains – and when it does, you want the **EZflow® Drainage System** on your team.

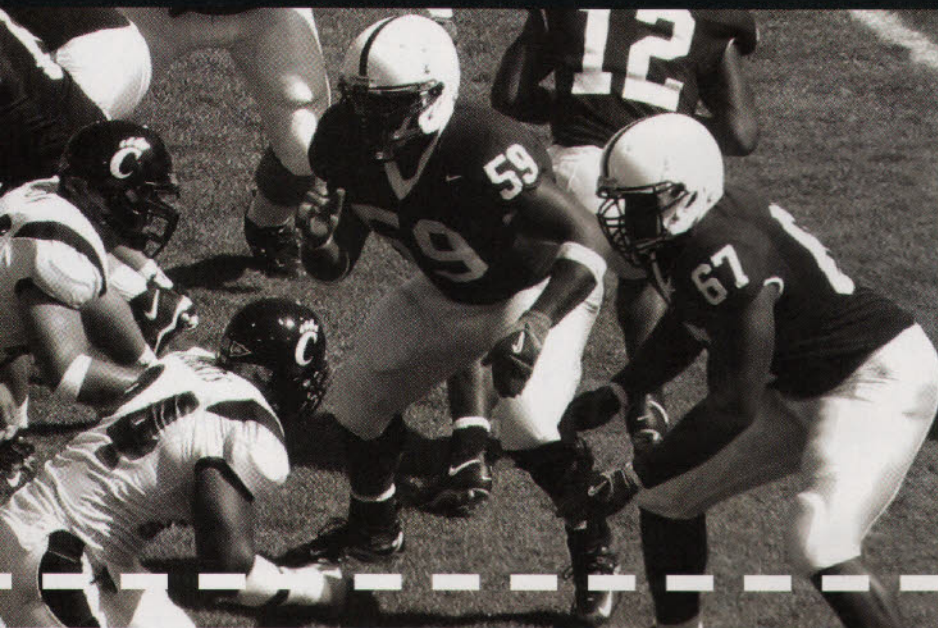
With its advanced engineering, EZflow moves up to five times more water than traditional rock and pipe systems, so you're back on the field, fast. With no gravel, you save on labor plus spare your field damage from heavy equipment. EZflow sections are so lightweight and flexible, you can install an entire system with one person.

Already proven at sports fields and golf courses, this system is a winner when it comes to performance plus saving on time, labor and materials.

The EZflow drainage system Works On Water. Try it once and you'll say "WOW." Find out more by calling **1-800-649-0253** or visiting **www.RingIndustrial.com**.

DISTRIBUTORSHIP OPPORTUNITIES FOR EZFLOW IN SELECTED AREAS.





A Position of Strength

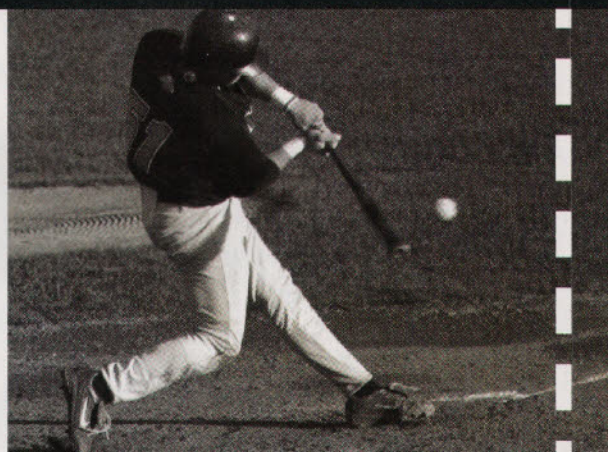
The strength of STMA comes from each one of you. Your commitment and passion for this profession has moved us forward to where we are today. I am proud to report that your association has accomplished much in these 12 months, with many new programs and benefits on our horizon.

Financially we've never been stronger, which has enabled us to meet our operating fund reserve goals and take on new projects. Membership continues to grow, and through our 30 chapters we are reaching out to those who have responsibility for athletic fields – though this might not be their primary job – and sharing our knowledge. We're committed to having you deeply involved in your association and the 20 committees and task groups attest to your participation. Our conference, which was challenged by severe weather, was a great success for its learning and networking opportunities because of you. You braved the weather and delayed flights, rerouted yourselves, took alternate transportation and made it work, just as you do on your fields every day.

I am personally committed to advancing our profession through education, and providing that education through STMA. In the next 12 months, look to STMA to have many more educational and informational tools available to you. As we each improve our individual skills, we advance the entire profession.

Mike Andresen

Mike Andresen, CSFM
STMA President



Our Performance and Accountability

STMA's responsibility is to you, our membership. We maximize each dollar earned by providing benefits back to the membership. We also realize that it is prudent to build a reserve fund for financial stability. A solid reserve allows STMA to be very agile so that it can take advantage of emerging opportunities. It also provides a cushion in case of a down economy or a crisis that affects our major revenue source—the conference and exposition-- so that we can continue to offer uninterrupted programs and services.

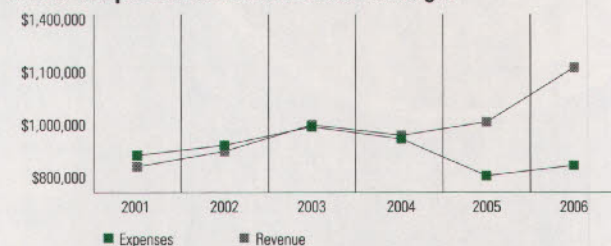
It is our goal to have one-half to one full-year of our operating budget in reserve. To that end, the STMA Board of Directors allocated \$174,914 from the 2006 year-end revenue to reserve funds, bringing those funds to \$573,737.

Independent Auditor's Report

| | 2006* | 2005** | 2004** |
|-----------------------|-----------|-----------|------------|
| Support & Revenue | 1,111,763 | 998,452 | 947,316 |
| Expenses | 878,544 | 834,677 | 961,939 |
| Excess (Deficit) | | | |
| Revenue over Expenses | \$233,219 | \$163,775 | (\$14,623) |

\$174,914 Allocated to Board Restricted Fund

5 Year Snapshot of STMA's Financial Strength



Figures provided by * Long CPA, PA, Lenexa, Kan.; **Bogner & Long Certified Public Accountants, Lawrence, Kan.



The Power of Partnerships

STMA continues to work on strengthening national partnerships, and we are currently working with 11 organizations. Two have resulted in significant joint projects:

- 1 The National Interscholastic Athletic Administrators Association (NIAAA) together with STMA and SAFE produced a high quality DVD on Baseball Mound-building and Home Plate Maintenance. STMA has also authored several articles for the Interscholastic Athletic Administration magazine.
- 2 For many years, STMA members have presented at the National Recreation and Park Association (NRPA) conference. That involvement has led to our development of on-line resources for NRPA and their partner, USA Football, to help volunteers and other non-sports turf managers take care of youth football fields. These, and other alliances, create greater recognition and influence for our organizations, our representative professions, and our members.

A Passion for Becoming Better

STMA is committed to providing relevant, accessible and affordable education. Last year, our members overwhelmingly indicated through the membership survey that continuing education and access to technical information are high priorities for STMA. Since then (and, in addition to the practical, technical and professional development information in our magazine, our electronic newsletter and annual conference education), we have:

- developed four technical bulletins on synthetic and natural turf
- produced a DVD on home plate maintenance and mound building
- improved the usability and content on our web site; and
- offered six on-line technical training classes with eight more available this month.



Leading for the Future

In the coming months, look for an influential public relations campaign that will enhance the image of the profession and bring recognition to members. Your Board of Directors has also given much attention to strengthening STMA's governance system, and in developing a long-range Strategic Plan. Committee work has been extremely productive and a greater emphasis will be given to member involvement. Our chapter network is gaining in momentum and STMA is dedicating even more resources to their efforts.

We are proud of our many accomplishments and look to a future that is filled with huge potential for even greater successes.

2007 Board of Directors | Officers - Mike Andresen, CSFM, President; Mike Trigg, CSFM,

Past President; Abby McNeal, CSFM, President-Elect; Tra DuBois, Vice President-Commercial;

Chris Calcaterra, CSFM, M.Ed., CPRP, Treasurer; David Rulli, Secretary; Board Members - Amy Fouty, CSFM;

Dale Getz, CSFM; Jody Gill; David Minner, Ph.D.; David Pinsonneault, CSFM; and Troy Smith, CSFM.

SportsTurf

MANAGERS ASSOCIATION

Experts on the Field, Partners in the Game.

805 New Hampshire, Ste. E | Lawrence, KS 66044

Ph. 800-323-3875 | Fax 800-366-0391 | www.stma.org



New zero-turn mowers

Kubota's new ZD-300 series of zero-turn commercial mowers feature state-of-the-art, energy-efficient Kubota diesel engines. These engines are designed to produce higher torque to aggressively take on heavy mowing jobs for extended periods. They use as much as 30% less fuel than gasoline engines; have fewer emissions; and operate more quietly. Plus, each model features dual fuel tanks to total 11.9 gal., which means fewer stops for refueling.

Kubota Tractor

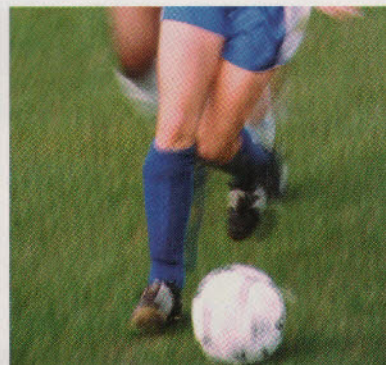
For information, fill in **056** on reader service form or see <http://www.oners.hotims.com/13974-056>

New intermediate zero-turn mower

Husqvarna's new iZ5223T intermediate zero-turn mower is powered by a 23 hp Vanguard engine and features a 52-inch deck, the iZ5223T offers ground speed up to 9.5 mph and a productivity rate of up to five acres per hour. The exclusive design configuration of the Tunnel Ram deck provides impressive performance in heavy cutting conditions, allowing operators to work with increased speed and precision.

Husqvarna

For information, fill in **057** on reader service form or see <http://www.oners.hotims.com/13974-057>



TIFSPORT BERMUDAGRASS

IT'S IDEAL FOR ATHLETIC FIELDS OF ALL STRIPES

TifSport Bermudagrass has great color. It recovers very rapidly from day-in and day-out abuse and injury. It has a much finer texture than Tifway 419 and most other bermudagrass varieties. It's also extremely cold tolerant, which makes it ideal for fields in the transition zone. Overseeding TifSport is a routine job as well. It provides an excellent base for ryegrass and ryegrass blends. If you're looking for a certified bermuda

that can stand up to the stress and demands of big-time sports, to the wear and tear from the cuts, starts and sudden stops you get from football and soccer cleats, to the punishment of baseball spikes, relax, you've found it - TifSport. It's what many experts are calling the new standard in sports turf for the 21st century. For more info and a list of licensed growers visit our website or call 706 542-5640.

TIFSPORT
www.tifsport.com

Fill in **138** on reader service form or visit <http://oners.hotims.com/13974-138>