

Home Field Advantage.



Moisture Removal & Aeration
Control & Monitoring
Permanent & Portable

www.subairsystems.com
866.641.6663

Fill in 170 on reader service form or visit <http://oners.hotims.com/12046-170>

Since 1983

MASA

Mid-America Sports Advantage
Request a FREE Catalog Online Today!
Secure Shopping 24/7

www.MASA.com www.sportsadvantage.com

Field Maintenance - Soccer - Softball
Multi-Sport - Field Hockey - Lacrosse

Check out our Best Prices, Large Selection, and Excellent Customer Service

Order Today!
800-264-4519

Baseball - "New Basketball Section" - Football

Fill in 172 on reader service form or visit <http://oners.hotims.com/12046-172>

Earth&Turf Linear Aerator **NEW!**

Model LA60

Its Technology changes the way Aeration is done!

- One-pass design maximizes cultivation!
- De-compacts hard fields to help reduce sports injuries!
- Incorporates topdressing material and native soil into aeration grooves!

SEE US AT **BOOTH #501**

www.earthandturf.com
888-693-2638

Fill in 173 on reader service form or visit <http://oners.hotims.com/12046-173>

DIAMOND
DIRT

ATHLETIC SURFACE

Red Warning Track Material
Red Infield Fines
Red Infield Conditioner
Red Quick Dry
Red Mound Packing Clay

Order in Bulk, Supersacks, or 50 lb. Bags

Fuller Five Landscape Supply

TOLL FREE 888-749-2880 • PH 334-749-2880
P. O. Box 150, Cusseta, AL 36852
sales@rareredrock.com • www.fuller5.net

Fill in 174 on reader service form or visit <http://oners.hotims.com/12046-174>

SPORTS FIELD MAINTENANCE

BUSINESS FOR SALE

Floyd Perry's
GROUNDS MAINTENANCE SERVICES
Orlando, Florida

Call 407-468-3088 or
407-903-1220
for Prospectus

- * Excellent Accounts
- * Experienced Staff
- * Large Equipment Inventory
- * Growing Central Florida Area

Partnership Considered

Fill in 175 on reader service form or visit <http://oners.hotims.com/12046-175>

GBS 1200 VERTICUTTER

belt driven both sides
offset mounting
48" cutting width

graden usa inc
7309 capehart road
richmond, va 23294
ph: 804 249 9950
fx: 804 249 9951
em: michael@gradenusa.com

CALL FOR YOUR FREE DEMO!

GRADEN

www.gradenusa.com

Fill in 176 on reader service form or visit <http://oners.hotims.com/12046-176>

Green TV is brought to you by GreenIndustryEducation.com. Offering the Landscape Industry a green news TV show format online!

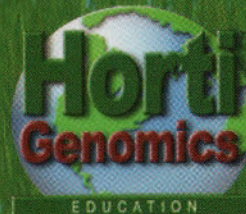
Episodes are either "Live" or "Pre-Recorded" and archived for easy viewing 24 hours day, 7 days a week, 365 days a year! Episodes will include coverage of industry and associations, tradeshow and conference events, new technology, professional trends, tips and more. Lots of FREE information in FUN and EASY streaming internet video show.



www.landsnetwork.net • www.green-tv.net

Fill in 177 on reader service form or visit <http://oners.hotims.com/12046-177>

BECOME A CERTIFIED SUSTAINABLE LANDSCAPER



Visit HortiGenomics.com

Deminishing resources and client demands have made Sustainable Landscapes extremely important. This valuable certification is a must for any industry professional.

GreenIndustryEducation.com
Your Continuing Education Oasis
877.964.6222

Fill in 178 on reader service form or visit <http://oners.hotims.com/12046-178>



RED

SELECT

rapid DRY

PROmound

800.648.1166

www.proschoice1.com

<http://info.hotims.com/9931-304>

Fill in 179 on reader service form or visit <http://oners.hotims.com/12046-179>

SportsTurf MANAGERS ASSOCIATION Online Training

STMA Members - \$30 each
Non-members - \$50 each

Session OC01 - Schools K-12

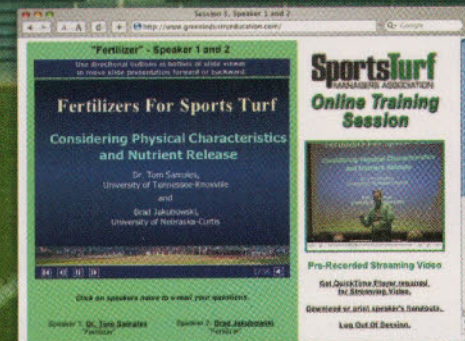
- Speaker 1 - Floyd Perry, Grounds Maintenance Services
- Speaker 2 - Dr. Grady Miller, University of Florida
- Speaker 3 - John Mascaro, Turf-Tec International
- Speaker 4 - Dr. John Cisar, University of Florida

Session OC02 - Parks & Recreation

- Speaker 1 - Preston Courtney, Disney Wide World of Sports
- Speaker 2 - Floyd Perry, Grounds Maintenance Services
- Speaker 3 - Bill Berry, City of Rock Hill
- Speaker 4 - Richard Sanger, Sarasota County

Workshop OC03 - Developing A Master Plan

- Speaker 1 - Francois Hebert, Consultant



Workshop OC04 - Building Athletic Fields

- Speaker 1 - Dr. Chuck Darrah, CLC Labs
- Speaker 2 - Boyd R. Montgomery II, The Toro Company
- Speaker 3 - Mark Heinlein, The Motz Group

Workshop OC05 - Fertilizer

- Speaker 1 - Brad Jakubowski, University of Nebraska
- Speaker 2 - Dr. Tom Samples, University of Tennessee

Demonstration OC06 - Outdoor Demonstrations

- Speaker 1 - Dr. Roch Gaussoin
- Speaker 2 - Floyd Perry, Grounds Maintenance Services
- Speaker 3 - Preston Courtney, Disney Wide World of Sports

For STMA Online Training information and registration, visit



GreenIndustryEducation.com

SportsTurf Managers Association (800) 323-3875

Fill in 180 on reader service form or visit <http://oners.hotims.com/12046-180>



Advertisers' Index/Reader Service Information

Three fast and easy ways to get additional information on products and services in this issue:

1. Visit the Web address next to the advertiser's name for the ad in this issue.
2. Go to sportsturf.hotims.com to search for products by category or company name. Plus, link directly to advertisers' Web sites, or request information via e-mail or by fax.
3. Complete the reader service information below. Write in the reader service number from the product or circle advertiser from the index, copy, and fax to (416) 620-9790

Please write the reader service number for **FREE product information** in the boxes above. If this is not your copy of ST, please go to www.submag.com/sub/ou to sign up for a **FREE one year subscription** of your own.

Please complete this form in its entirety to receive your product information.

1. **What is your company's primary business?** (check **ONLY ONE**)
 F Sports Complex G Athletic Field and/or Park Architect/Designer
 T School, College or University P Park H Other (please specify) _____
2. **Which of the following best describes your title?** (check **ONLY ONE**)
 A EXECUTIVE/ADMINISTRATOR — President, Owner, Partner, Director, General Manager, Chairman of the Board, Purchasing Agent, Athletic Director
 B MANAGER/SUPERINTENDENT — Superintendent, Landscape/Ground Maintenance Manager, Foreman, Supervisor
 C GOVERNMENT OFFICIAL — Government Commissioner, Agent, Other Government Official
 D SPECIALIST — Architect, Designer, Consultant, Agronomist, Horticulturist, Certified Specialist
 F COACH E Other (please specify) _____
3. **Do you have the authority to buy, specify or recommend products and/or services for your business or organization?**
 Y Yes N No
4. **Yearly operating expenditures** (excluding salaries)
 F Over \$1 million C \$50,001 - \$100,000
 E \$500,001 - \$1 million B \$25,001 - \$50,000
 D \$100,001 - \$500,000 A \$25,000 and under
5. **Please also send a free subscription to the following people at the same location**
 Name _____ Title _____
 Name _____ Title _____

SportsTurf ADVERTISERS' INDEX

Advertiser	Web Address	Fill in #	Page #
Aer Flo	http://www.oners.hotims.com/12046-127	127	33
Aerway/Holland Equipment	http://www.oners.hotims.com/12046-134	134	41
Airfield Systems	http://www.oners.hotims.com/12046-140	140	46
Bannerman	http://www.oners.hotims.com/12046-125	125	31
Barenbrug USA	http://www.oners.hotims.com/12046-113	113	9
Bare Spot Solutions	insert, see page 11		
Beacon Athletics	http://www.oners.hotims.com/12046-121	121	52
BLEC USA	http://www.oners.hotims.com/12046-167	167	70
Bobcat Company	http://www.oners.hotims.com/12046-112	112	5
Buffalo Turbine	http://www.oners.hotims.com/12046-156	156	62
Covermaster	http://www.oners.hotims.com/12046-117	117	17
Covertch	http://www.oners.hotims.com/12046-166	166	70
Cygnat Turf	http://www.oners.hotims.com/12046-153	153	61
Dakota Peat	http://www.oners.hotims.com/12046-143	143	49
Delta BlueGrass	http://www.oners.hotims.com/12046-116	116	15
Diamond Pro	http://www.oners.hotims.com/12046-128	128	34
Diversified Sports Specialties	http://www.oners.hotims.com/12046-163	163	69
Eagle Picher	http://www.oners.hotims.com/12046-142	142	47
Earth & Turf	http://www.oners.hotims.com/12046-173	173	71
Eco Chemical	http://www.oners.hotims.com/12046-146	146	53
Environmental Turf	http://www.oners.hotims.com/12046-114	114	12
First Products	http://www.oners.hotims.com/12046-123	123	26
Fuller Five Landscape Supply	http://www.oners.hotims.com/12046-174	174	71
General Sports Venue	http://www.oners.hotims.com/12046-133	133	39
Graden	http://www.oners.hotims.com/12046-176	176	71
Green Industry Education	http://www.oners.hotims.com/12046-177, 178, 180	177, 178, 180	72
GreenOne Industries	http://www.oners.hotims.com/12046-155	155	62
GreensGroomer	http://www.oners.hotims.com/12046-120	120	23
Grigg Brothers	http://www.oners.hotims.com/12046-148	148	55
Grounds Maintenance Services	http://www.oners.hotims.com/12046-175	175	71
Howard Johnson Enterprises	http://www.oners.hotims.com/12046-160	160	66
Hunter Industries	http://www.oners.hotims.com/12046-131	131	37
Irrigation Association	http://www.oners.hotims.com/12046-152	152	60
Jacobsen	http://www.oners.hotims.com/12046-182	182	76
John Deere	http://www.oners.hotims.com/12046-115	115	13
Johnston Seed	http://www.oners.hotims.com/12046-129	129	35
Kifco	http://www.oners.hotims.com/12046-154	154	61
KRain	http://www.oners.hotims.com/12046-111	111	3
Kromer	http://www.oners.hotims.com/12046-151	151	59
Kubota	http://www.oners.hotims.com/12046-157	157	63
Lebanon Turf	http://www.oners.hotims.com/12046-136	136	43
Marco Clay	http://www.oners.hotims.com/12046-147	147	54
MASA	http://www.oners.hotims.com/12046-172	172	71
Missouri Turf & Paint	http://www.oners.hotims.com/12046-141	141	70
Newstripe	http://www.oners.hotims.com/12046-119	119	22
Oil Dri/Pro's Choice	http://www.oners.hotims.com/12046-122, 179	122, 179	25, 72
Pacific Sod	http://www.oners.hotims.com/12046-145	145	24
Partac Peat/Beam Clay	http://www.oners.hotims.com/12046-130	130	36
Pennington Seed	http://www.oners.hotims.com/12046-135	135	41
Pioneer Athletics	http://www.oners.hotims.com/12046-110	110	2
Rainmaster Irrigation	http://www.oners.hotims.com/12046-150	150	57
Redexim Charterhouse	http://www.oners.hotims.com/12046-124	124	29
Redexim Charterhouse	http://www.oners.hotims.com/12046-158	158	65
ROOTS/Novozymes	http://www.oners.hotims.com/12046-138	138	45
Rotadairon Emrex	http://www.oners.hotims.com/12046-171	171	69
Scotts Company	http://www.oners.hotims.com/12046-144	144	51
Seed Research of Oregon	http://www.oners.hotims.com/12046-137	137	44
Shindaiwa	http://www.oners.hotims.com/12046-168	168	70
Sports Turf Managers Association	http://www.oners.hotims.com/12046-161	161	67
Stabilizer Solutions	http://www.oners.hotims.com/12046-132	132	38
SubAir Systems	http://www.oners.hotims.com/12046-170	170	71
The Toro Company	insert, see page 27		
TifSport Growers Association	http://www.oners.hotims.com/12046-118	118	19
Turf Specialties	http://www.oners.hotims.com/12046-139	139	46
TYCROP	http://www.oners.hotims.com/12046-159	159	66
University of Georgia	http://www.oners.hotims.com/12046-149	149	56
Varicare Technologies	http://www.oners.hotims.com/12046-181	181	75
WaterWick	http://www.oners.hotims.com/12046-169	169	70
Wessco	http://www.oners.hotims.com/12046-164	164	69
Whitlam Paint	http://www.oners.hotims.com/12046-165	165	69
World Class Athletic Surfaces	http://www.oners.hotims.com/12046-126	126	32

Yes, Please start/continue my subscription to SportsTurf

No, thank you.

Signature: (required) _____

Date: _____

Name: (please print) _____

Title: _____

Company: _____

Address: _____

City: _____

State: _____

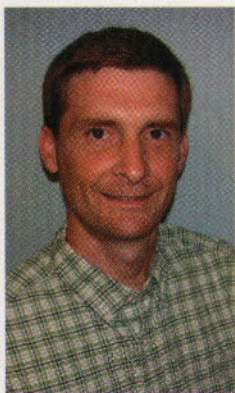
Zip: _____

Phone: _____

Fax: _____

Email: (required) _____

Lines and slopes



BY DR. GRADY MILLER
Professor, North Carolina State University

Questions?

Send them to Grady Miller at North Carolina State University, Box 7620, Raleigh, NC 27695-7620, or email grady_miller@ncsu.edu

Or, send your question to David Minner at Iowa State University, 106 Horticulture Hall, Ames, IA 50011 or email dminner@iastate.edu.

We are in the planning stages for a new combination football/soccer stadium. An architect who only has experience in building football fields with "turtleback crowns" is designing the field. As a soccer coach my teams have played on some of the fields he has designed. They may be suitable for football but are not good soccer venues. We have been a soccer only school for 30 years but added football 2 years ago. Our current field has about an 8-inch crown (center to sidelines) which has been touted by some as one of the best soccer facilities in the state. We are beginning a \$16 million capital expansion campaign that will include our new soccer/football facility. As a member of the local design team I am trying to ensure that the newly devised field will have both a thorough underdrain system as well as a suitable crown for surface shedding of water (to catch basins) located at the perimeter of the field. When I spoke with the architect about less crown than he had designed he became nervous about the field holding too much water. What guidelines can you offer us in order to provide a surface both suitable for football and soccer?

DJ

Central Florida

Thanks for the e-mail. Well, it sounds like you are on the right track and understand what you want and need. It has been my experience that almost everyone associated with football and soccer has their ideal field design as it relates to crowns. The most important issue is that when a field is going to be used for both sports, that the coaches and those involved in the design and construction listen to each other so that there are no surprises after the field is constructed.

As you know, crowns were originally designed to promote surface drainage for fields constructed from native soils that have poor internal drainage due to their silt and/or clay content. The simplest football field design has the field crowned longitudinally down the center of the field to promote surface drainage toward the sidelines. The sidelines may or may not include catch basins for further water removal. In some cases, the sidelines are level and sometimes sloped or contoured to promote better water movement. The crown may include up to 2% slope from the sidelines.

Today's modern football fields usually have low crowns (6 to 10 inches rather than 12 to 18 inches) even though old-fashion football coaches (and perhaps architects) think that big crowns are necessary in football. The move toward lower crowns for school and municipal fields largely resulted from the increased popularity of soccer in the US. Soccer's popularity resulted in more dual-use fields. Since

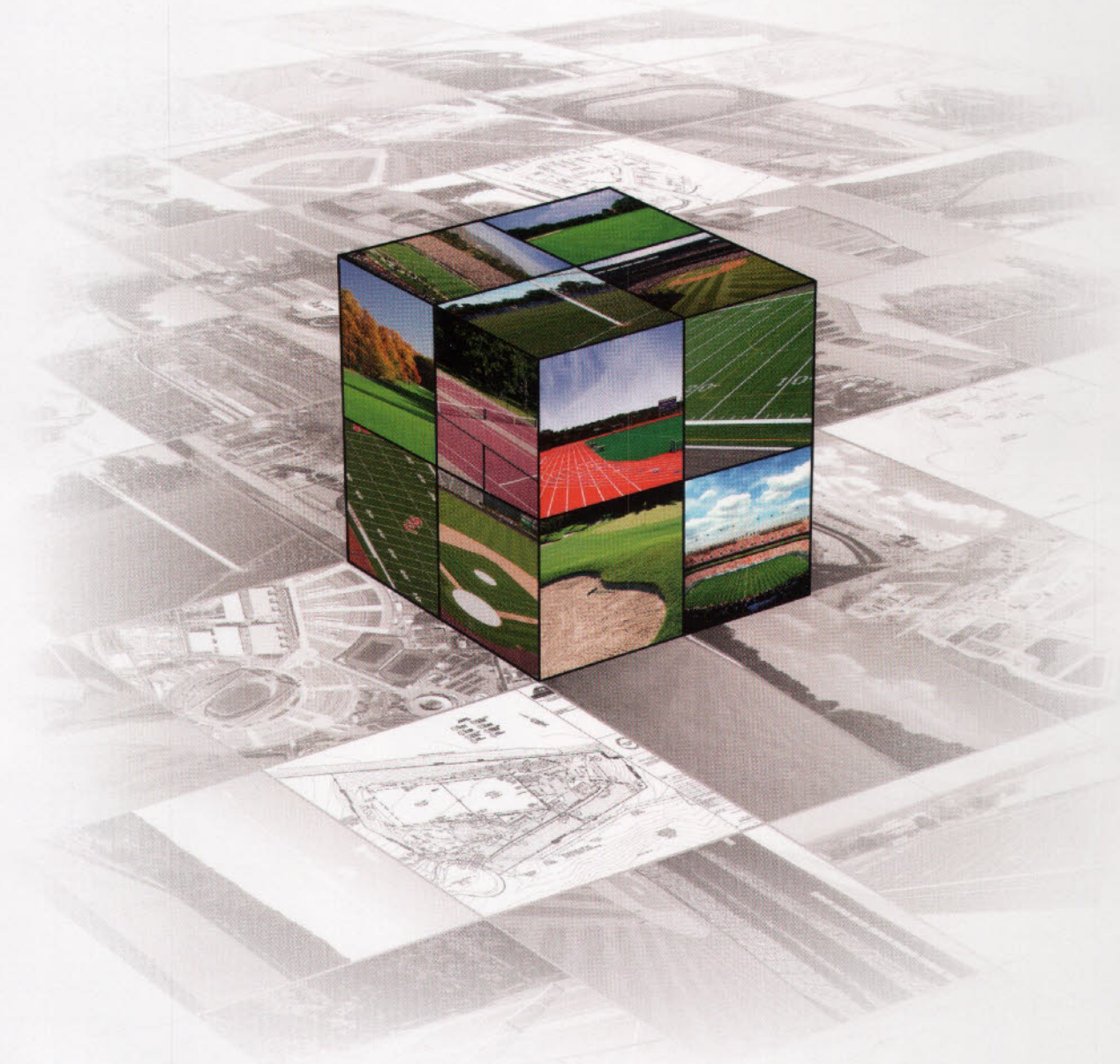
soccer requires extending the football field's sidelines, there is a greater need for a consistent slope through the field's perimeter to maintain consistent soccer field slopes and to provide a better transition between the two field designs. The design of many traditional football fields has caused a few problems when they are used for soccer.

I believe that the most important point in this issue is that a crown is not necessary for a field if the field is properly designed, constructed, and maintained with the intention of not having one. If the soil has good internal drainage (at least 6 inches per hour with grass installed, higher for lab tested ks_{at}) and underground drainage to remove the water, then there is no reason to have a crown. I know some football organizations that have still elected to build a small crown just because it seems to be part of the football tradition. An 8-inch crown for a soccer-width field is fairly common in high quality sand-based fields and is a reasonable compromise between soccer and football aficionados.

Unfortunately, the cost of building sand-based fields may be a little high unless suitable sands are readily available. The flatter the field, the more important the sand selection and the drain system become. I would recommend that the architect have the soil samples tested at an accredited lab that is accustomed to running "USGA specification" tests. The USGA provides an up-to-date list of accredited labs on the website (www.usga.org). This will assure the architect and you of the infiltration rate (and relate to you the amount of water the soil will hold). Hooghoudt's equation can be used to calculate drain line spacing based on the infiltration rate of the soil, height of rootzone mix, and anticipated extreme rainfall event. With properly sized and spaced drainage lines and some off-field contouring, standing water should not be an issue.

Two other resources that are readily available that you may want to invest in (and share with your architect) include the publications, "Designing, Constructing, and Maintaining Bermudagrass Sports Fields", the ASTM International standards that relate to designing and constructing sand-based athletic field root zones; and the ASTM guides to maintaining turfgrasses on athletic fields. These publications are filled with suggested related to material selection and testing as well as construction specifications. Some of the information may have to be tempered for your specific situation. The first publication is available from the extension service of Clemson University, University of Georgia, or University of Florida. In addition the STMA normally sales this publication at the annual conference. The ASTM publications are available for downloading at www.astm.org. ■

Inevitably, **INNOVATION** rises above tradition.
Let us show you how **INNOVATION** in drainage can benefit your project.



www.varicore.com | www.varicore.com | www.varicore.com | www.varicore.com | www.varicore.com



Technical Assistance | Complimentary Design & Layout | Project Planning

Varicore Technologies, Inc. | 800-978-8007 | service@varicore.com

Fill in 181 on reader service form or visit <http://oners.hotims.com/12046-181>

