



KUBOTA UTILITY VEHICLE

Kubota introduces their first-ever Utility Vehicle, the RTV900, available in four configurations with a wide variety of accessories. The unit hosts Kubota's exclusive three-range variable hydrostatic transmission (VHT) and hydraulic power steering. The transmission boasts a braking feature that never allows the RTV900 to enter a free-wheel status when traveling downhill. The three-range shifting provides low (0-10 mph), mid (0-18 mph) and high (0-25 mph) operational speeds adding diversity when climbing hills and hauling or towing a load. Kubota Tractor Corp/888-458-2682 For information, circle 089 or see <http://www.oners.ims.ca/2914-089>

NEW PRODUCT!

AUTOMATIC 4 X 4 UV

Club Car officially entered the 4-wheel-drive market with the unveiling of the Carryall 294 4x4 utility vehicle, which uses the company's exclusive IntelliTrak system to deliver fully automatic, on-demand 4x4. The Carryall 294 continually senses driving conditions and automatically engages and disengages 4-wheel drive without requiring the driver to stop and shift gears or lock differentials. The vehicle is available with a 20-hp Honda gas or a 20-hp, Kubota diesel-powered engine. Club Car/800-800-1227 For information, circle 090 or see <http://www.oners.ims.ca/2914-090>



sisis
DESIGNER & MANUFACTURER OF TURF MAINTENANCE MACHINERY SINCE 1932

www.sisis.com

For full details of the SISIS range and your local dealer please contact:
SISIS INC., PO Box 537, Sandy Springs, SC29677
 Phone: (864) 843 5972 Fax: (864) 843 5974 Email: fdc@sisis.com

Circle 161 on card or www.oners.ims.ca/2914-161

Beacon Ballfields is now Beacon Athletics!

We've changed our name, not our game!

INTRODUCING...

BEACON ATHLETICS

Beacon Athletics offers training, conditioning and athletic field equipment to improve the performance of athletes and the fields they play on.

Hundreds of NEW products!

TRAINING & FIELD EQUIPMENT EXPERTS

beaconathletics.com

Visit us online or call anytime!
[800] 747.5985

Circle 162 on card or www.oners.ims.ca/2914-162



NEW PRODUCT!

GROUNDHOGS

AerWay has introduced all new 12- and 15-ft. widths as part of its Groundhog product line. "These are machines for contractors and large municipalities where time is critical" says Steve Russell, General Manager. "The larger sizes can aerate up to 10 acres per hour which significantly reduces the average application cost."

The units fold vertically for transport and include ballast tanks, pillow block bearings, and the choice of any of the AerWay family of tines including shattertine, sportstine, finetine, or coring tine. They can be fitted with optional smoothing rollers.

AerWay/800-457-8310
For information, circle 091 or
see <http://www.oners.ims.ca/2914-091>

SPRAYTEK

The Cushman Spraytek is a dedicated sprayer built on the Cushman Turf-Truckster chassis. With a choice of a Suzuki 660 or 970 engine and an optional sprayer tank capacity of 175 or 300 gal., the Spraytek can be customized to fit your needs. Units have 4-speed manual transmission and 6.5-gal. tank and a centrifugal pump made of stainless steel, a pump capacity of 80 gpm and a variety of spray boom choices.

Jacobsen/888-922-8873
For information, circle 092 or
see <http://www.oners.ims.ca/2914-092>



Online continuing education for busy sports turf professionals.

LANDSEXPO

Design, Selection, Implementation and Maintenance

Conference and Tradeshow

March 23, 2005 in Las Vegas

Satisfying CEU requirements just got easier!

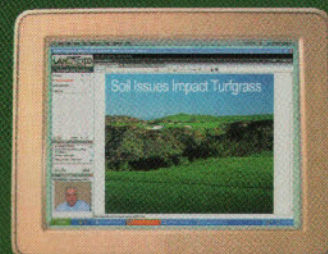
Online Registration Opens November 2004

National credits applied for: CCA and DPR Hours, GCSAA PDUs.

www.landsexpo.com • 877-964-6222

Now there is a choice!

The latest internet technology provides even dial-up online attendees virtually all on-site features!





NEW PRODUCT!

TOW-BEHIND TOPDRESSERS

Turfco introduces new options to its WideSpin 1530 tow-behind topdresser. The machine can topdress as light as a fertilizer spreader up to 30 ft. wide. This light, uniform and clean application means no dragging is required. The WideSpin 1530 can switch from light to heavy topdressing applications without attachments.

Turfco Manufacturing/763-785-1000
For information, circle 093 or see <http://www.oners.ims.ca/2914-093>



NEW PRODUCT!

LAND PRIDE MOWERS

Land Pride's new Razor Pro Series of riding mowers incorporates the convenience of 44- or 52-in. deck sizes with commercial features like a twin cylinder gasoline powered engine, 11-gauge deck reinforced with 11 gauge doubler plate and heavy duty push arms on the mower deck. An individual hydraulic motor powers each rear drive wheel for commercial like traction and maneuverability.

Land Pride, Div. of Great Plains, Mfg./785-823-3276
For information, circle 094 or see <http://www.oners.ims.ca/2914-094>

NEW PRODUCT!

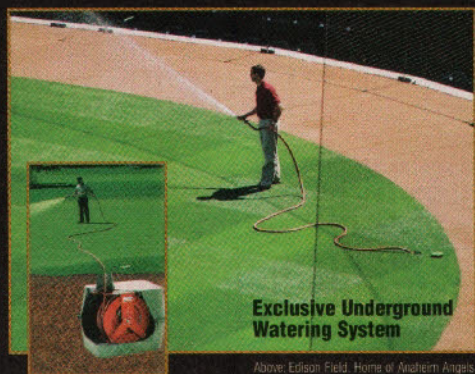
2005 KAWASAKI MULE 3000

The full-sized Kawasaki MULE 3000 off-road utility vehicle is larger, has a more powerful engine, and more hauling and towing capacity than the compact MULE 550 model. With features that include a tilting cargo bed, bench seat, fully automatic transmission and locking differential, it is Kawasaki's "industrial grade" utility vehicle.

Kawasaki/949-770-0400
For information, circle 095 or see <http://www.oners.ims.ca/2914-095>

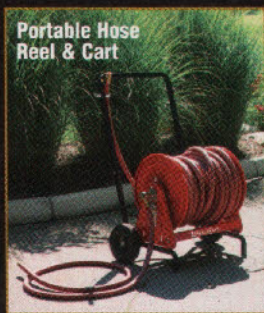


Work Smarter THINK REELCRAFT



Exclusive Underground Watering System

Above: Edison Field, Home of Anaheim Angels



Portable Hose Reel & Cart



Trailer & Reel Hose Caddy

Contact the hose reel experts for water when and where you need it!

Visit us in booth #714!



MEMBER OF THE IRRS



800-444-3134
Product Info Ext. 7335
www.reelcraft.com

REELCRAFT

Wind Things Up With Reelcraft

Circle 163 on card or www.oners.ims.ca/2914-163



AerWay® gives you the versatility to meet your changing needs.

Seasons Change... So Should Your Aeration Treatments



Aerate All Year Long!
Aeration needs change with the seasons – from early establishment and growth, to maintenance midseason, and then to topdressing and overseeding as circumstances permit.

Design Your Own Aerator!

Only AerWay® lets you choose a frame size and style to suit your power unit, and add any of our quick-change tined rollers (Shattertine®, Sportstine®, Finetine®, Coring Tine®) that suit the seasonal requirement.



Coring Tine®



Shattertine®



Sportstine®



Finetine®

for further information call **1-800-457-8310**

Advanced Aeration Systems

www.aerway.com email: aerway@aerway.com

Circle 164 on card or www.oners.ims.ca/2914-164

Blowers and vacuums

Autumn is almost here and that means you'll soon be responsible for keeping some areas leave- and debris-free. Here's a sampling of available products to make those tasks easier.



SHINDAIWA BACKPACK BLOWER

The EB630 is Shindaiwa's most powerful blower. Powered by a 3.9-hp engine, it produces 613-cfm air volume and 201-mph air velocity at tube tip. Ideal for blowing wet matted leaves, hedge trimmings, and large areas. The flexible, multi-position blower tube/hand control swivels up for convenient storage.

Shindaiwa Inc./800-521-7733
For information, circle 075 or
see <http://www.oners.ims.ca/2914-075>



STIHL BACKPACK BLOWER

The Stihl BR 420C Magnum backpack blower is the catalytic muffler version of Stihl's BR 420 unit. The fuel tank is isolated from the fan housing for low vibration and easy maintenance. For improved ventilation, a separate, external tank vent comes standard. This 19.6-pound blower is also fitted with a self-cleaning, vertical-pleated air filter.

Stihl Inc./800-467-8445
For information, circle 076 or
see <http://www.oners.ims.ca/2914-076>

**NEW
PRODUCT!**

REDMAX BACKPACK BLOWER

RedMax offers a blower for every job. The EBZ5000Q's noise level is just 65 dB(A). Yet, it moves up to 596 cfm of air at a speed of up to 142 mph. Units are powered by Komatsu Zenoah's Strato-Charged engines. Clean air standards are met by introducing fresh air into the engine between the exhaust gases and the fresh charge of air/fuel mix.

RedMax, Komatsu Zenoah American Inc./800-291-8251, x214
For information, circle 074 or
see <http://www.oners.ims.ca/2914-074>



BROYHILL'S VACMATE

Broyhill's VacMate has a spring arm mounted suction hose for cleanup of virtually any facility. It is a dedicated attachment for the TerraSport, Broyhill's automatic (CVT) transmission 16-hp utility vehicle. The cab-over design maximizes operator visibility. The vacuum is completely self-contained with a large rear access door and a tough reusable refuse bag.

Broyhill/800-228-1003, ext. 34
For information, circle 072 or
see <http://www.oners.ims.ca/2914-072>



KAWASAKI BACKPACK BLOWER

Kawasaki's KRB700B backpack blower features a convenient tube-mounted joystick with an easily controlled trigger throttle, a fully adjustable throttle lock control and an engine shutoff switch. A 2-liter fuel tank is translucent for easy reads. The high-density back padding and shoulder harness significantly reduce vibration.

Kawasaki Motors Corp., U.S.A./877-608-6088, option 0
For information, circle 077 or
see <http://www.oners.ims.ca/2914-077>



WELCOME TO BEACON ATHLETICS

Beacon Ballfields has a new company name and logo. The 60-year-old company is now called Beacon Athletics. The change reflects the broad range of capabilities the company already offers and the addition of a new product line that enhances training and sports conditioning.

Beacon Athletics/800-747-5985
For information, circle 070 or
see <http://www.oners.ims.ca/2914-070>

LITTLE WONDER BLOWER LINE

Schiller-Pfeiffer's Little Wonder High-Output Blowers now feature 12-in. rear pneumatic tires and the gauge of steel used for the front cover and intake panel will be reduced to decrease unit weight and enhance maneuverability.

Little Wonder/877-596-6337
For information, circle 069 or
see <http://www.oners.ims.ca/2914-069>



Green Industry Expo 2004

Professional People, Products and Ideas



November 3-6, 2004 > Charlotte Convention Center, Charlotte NC
1 888 303 3685 > www.gieonline.com



Professional - dedicated to the needs of landscape contractors and grounds professional

Products - 350 manufacturers launching new product lines

People - attended by more than 6,000 professionals from across the nation

Ideas - three optional Green Industry Conferences with more than 60 education sessions

We bring you a fresh location annually! Wednesday to Saturday, November 3-6 at the Charlotte Convention Center. Product Field Day, November 4. Indoor Exhibits, November 5-6. Educational Conferences, November 3-6. FREE trade-show-only registration at www.gieonline.com.

For more information:
(888) 303-3685
info@gieonline.com
www.gieonline.com

Clip & Send to:
Green Industry Expo
1000 Johnson Ferry Road, NE
Suite C-135
Marietta, GA 30068-2112
Fax: (770) 579-3835

Yes! Send me a brochure about GIE/2004.

- Send me information on attending.
 Send me information on exhibiting my products.

Name _____
Company _____
Address _____
City _____ State _____ Zip _____
Phone _____ Fax _____
Email _____

GIE and its exhibitors may use your contact data to forward you show updates and product information.

- Check here if you wish to have your name withheld.

Sponsored and Endorsed by:



Circle 155 on card or www.oners.ims.ca/2914-155



TURF TIDY

For use with a tractor of 20 hp or more, the Redexim Charterhouse Turf Tidy is designed to follow the ground's contours, ensuring a clean, even pick-up. The turbo fan makes a clean sweep of leaves, pine needles, paper and grass clippings, and the large hopper means less time emptying. Redexim Charterhouse/800-597-5664. For information, circle 071 or see <http://www.oners.ims.ca/2914-071>



ECHO BLOWER

The PB-751 features a 63.3-cc commercial engine that delivers 620-cfm air volume and 205-mph air force at the pipe. Other features include a posi-loc pipe connection system, a 68-fluid-oz. fuel tank, an automotive-type commercial air filter, and comfortable operator ergonomics. Echo Inc/800-432-ECHO. For information, circle 078 or see <http://www.oners.ims.ca/2914-078>

MULTI-PURPOSE VACUUM

The Billy Goat SV50HR Quiet Vac with a 5.5-hp Honda OHV GXV engine combines power and quiet operation on both turf and hard surfaces. Features include a front-load filter bag that empties front or rear; exhaust air is directed down and away from the operator's face; and a spanner wrench is all it takes to customize the SV for turf or hard surface use. Billy Goat Industries/816-524-9666. For information, circle 073 or see <http://www.oners.ims.ca/2914-073>



SAFE Scholarships need applicants!

The Foundation for Safer Athletic Field Environments (SAFE) was created by the Sports Turf Managers Association (STMA) to provide scholarships, educational programs, and research geared to sports fields. Scholarships are a key part of this program.

Significant scholarship funding is available for 2004 thanks to the funds raised through the combination of the Jacobsen-sponsored SAFE Golf Tournament and the Raffle, Silent and Live Auctions that took place at last January's STMA Conference. The SAFE Board has authorized the allocation of up to \$18,000 in direct Scholarship dollars and funds toward travel and lodging expenses to allow the recipients to attend the STMA 2005 Conference in Phoenix January 19-23, 2005.

Scholarships are available for those in Community College or other 2-year programs, for those in undergraduate programs, and for graduate students. Along with the monetary award of the scholarship, each recipient is provided with registration to the 2005 STMA Conference, and up to \$500 to be applied toward travel and lodging expenses related to attending the Conference. The scholarships are presented at the Awards Banquet, which will be held on Friday evening, January 21, at the Hyatt Regency Phoenix hotel.

Scholarship application information and application forms are sent right after Labor Day each year directly to STMA Student and Educator members, as well as to two and four year Colleges and Universities offering turf programs. These materials also are posted in the SAFE section of the STMA website or may be

requested by phoning 800-323-3875.

The SAFE Foundation Board of Trustees recognizes the fact that SAFE has much work to complete before it can supply the sports turf industry with the desired level of programs and it continues to move forward on following the parameters set to help SAFE meet its goals.

Additional funding is needed to fulfill all three arms of our mission: the scholarship program, research, and education. SAFE's major thrust for 2004 is seeking greater funding for sports specific research, finalizing the research criteria, and beginning assessment of research projects for funding. The Board continues to make positive steps in all of these areas.

It is the intent of the SAFE Board and the SAFE Research Committee to identify key areas of research needs and then solicit these needs to the researchers. Thus it is important that this information on key areas of research needs come from STMA members, STMA Chapters, and other sports turf managers. SAFE will focus on research that is applicable and repeatable so it meets the needs of sports turf managers. Progress has already been made on the research criteria and development continues on the forms for research grant applications.

A safe, playable field is the strong foundation of any game. Working together, we can build the SAFE Foundation into a strong resource for sports turf managers around the world. Contact SAFE Headquarters (SAFE@st.omhcoxmail.com) with your ideas and for more information on making contributions to the SAFE Foundation. **ST**

VSTMA Field Day 2004 is a success

BY **BOB STUDHOLME**

In fall 2003, the Virginia Sports Turf Managers Association (VSTMA) Board of Directors awarded Field Day 2004 to Atlee High School in Hanover County and Marc Moran. In keeping with VSTMA tradition, Marc automatically became not only the Field Day Host but the VSTMA Field Day Committee Chairman as well. Marc, who moonlights as the VSTMA Category 3 Director, immediately set in motion plans that culminated at the July 20-21 Field Day. Under blue sky and seasonable temperatures, this year's event drew 135 participants and 22 suppliers/service providers, including industry support groups such as the Virginia Turfgrass Council, and featured concurrent educative lectures, vendor displays and equipment demonstrations.

The 2-day event began the evening of July 20 with the "Tailgate Reception" sponsored by Luck Stone Specialty Products. First introduced during Field Day '03, the reception is geared primarily towards networking. The Field Day proper was held the next day. Kickoff was at 8 AM sharp and featured a keynote address by STMA President Bob Campbell. Immediately following was the main draw for most of the attendees: 12 educative sessions spread over the next 5 hours at various locations around the school, all within a minute or two of each other.

On-the-field lectures included: Dr. Shawn Askew of Virginia Tech and his ever popular "Weed Walk"; Dr. Mike Goatley of Virginia Tech on "Transitioning Bermudagrass/Ryegrass Fields"; Chad Mulholland of the Richmond Braves on "Pitchers Mound Maintenance"; Sam Doak of Virginia Tech on "Turfgrass Nutrition"; Marc Moran of Atlee High School on "Field Marking"; Jimmy Rodgers, CSFM, University of Virginia, on "Infield Maintenance."

Two other sessions were supported by active equipment demonstrations:

Joe Harmon of Harmon Turf Services on "Deeptine Aeration," featuring both drill-and-fill and reciprocating-type aerators; and Michael Sullenberger of George Mason University on "Maintaining Wear Areas," with support of Specialty Turf Services demonstrating row sprigging of Bermudagrass. This year's Field Day also included two indoor presentations, strategically scheduled during the heat of the day (July in Virginia!): Dale Getz, CSFM, of The Toro Company led an excellent discussion on "Managing Soils," and Bob Campbell, CSFM, gave a terrific presentation titled "A Sportsturf Manager's Survival Guide."

The VSTMA Field Day Committee extends a big Thank You to the Atlee High School Athletic Boosters Club, who helped prepare and serve food as well as staff the registration table on both days, and the following sponsors for their tremendous support, without which this event would not be possible:

HALL OF FAME SPONSORS

- Luck Stone
- Smith Turf and Irrigation
- G.L. Cornell
- Bayer Environmental Sciences

ALL-STAR SPONSORS

- Landscape Supply
- Revels Tractor and Finch Turf Equipment
- Harmon Turf Services
- Specialty Turf Services

chapter news

Ohio Sports Turf Managers Association (OSTMA): The OSTMA Fall Field Day and Vendor Showcase will be held September 7 at the OSY Intramural Complex Fred Bechman Park. The Chapter also will participate in the OTF Annual Golf Tournament October 5 at the Golf Club of Dublin.

For information on the Chapter, or upcoming events, call OSTMA Headquarters at 888-824-9805 or 419-824-9805 or Boyd Montgomery, CSFM, at 419-885-1982; or visit the chapter's website at www.ostma.org.

Texas Sports Turf Managers Association: The Chapter will meet September 9 at the Baseball USA Complex in Houston. The Chapter's 2nd Annual Scholarship Golf Tournament will be held October 20 at the Mill Creek Golf Club & Inn in Salado.

For more information contact 866-897-8621 or email T. J. Thompson, Treasurer, at: TXturfmanager@prodigy.net.

Florida Chapter # 1: Make plans now to attend the Florida Turfgrass Association 52nd Annual Conference & Show to be held September 12-15 at the Hyatt Regency Downtown Tampa. The Chapter will lead a tour September 13 beginning at noon. Sites include a local golf course, Raymond James Stadium, and Legends Field. For information on this event, visit the website: www.ftga.org. The Chapter also is planning a November 16 meeting at Sable Pines Park in the City of Coconut Creek. The topic is Total Park Maintenance from Fence to Fence. Equipment demonstrations will also be showcased.

For information on the Chapter, or pending

activities, contact John Mascaro at 954-341-3115 or STMA@Turf-Tec.com.

South Carolina Chapter of STMA: The Chapter will participate in Clemson University's Annual Turfgrass Field Day at the University's Madren Center Pavilion September 14. Participants may choose between two events that afternoon: playing in the Charles P. Willimon, Sr. Memorial Turfgrass Research and Education Fundraising Golf Tournament at the Walker Course on campus or visiting the sports field facilities at the University.

For more information on the chapter or upcoming events, contact Dr. Hale at 843-662-3526 extension 206 or by email at thale@clemson.edu or on the chapter's website www.scstma.org.

chapter news

The Greater LA Basin Chapter of the Sports Turf Managers Association: The Chapter will hold a general meeting on September 15 at UCI. For information, call Eric Johnson, University of Southern California, at 213-821-5654 or email ejohnson@busaff.usc.edu.

Colorado Sports Turf Managers Association: CSTMA will hold a Painting Workshop at the University of Colorado September 16. For information on the Chapter, or upcoming activities, visit www.CSTMA.org or call 303-346-8954, or contact Chapter President Ryan Jensen at 303/464-5687 or rjensen@ci.broomfield.co.us.

Michigan Sports Turf Managers Association (MiSTMA): MiSTMA is planning a half-day hands-on workshop for September 21 in the Kalamazoo area. More details will be announced soon.

For information on the Chapter or pending events, contact MiSTMA Headquarters at 517-712-3407, or email Amy Fouty, Michigan State University, at fouty@ath.msu.edu, or go to www.mistma.org.

Iowa Sports Turf Managers Association: The Chapter will hold a Workshop September 22 at Rosenblatt Stadium in Omaha, NE. Event host will be Jesse Cuevas.

For information on the Chapter, or upcoming activities, contact Jeff Wendel of The Turf Office at tel. 515-232-8222, or fax 515-232-8228, or e-mail: Jeff@iowaturfgrass.org.

Nebraska Sports Turf Managers Association: The Chapter will participate in the Iowa Chapter's Workshop September 22 at Rosenblatt Stadium in Omaha. Event host will be Jesse Cuevas.

For information on the Chapter, or upcoming events, call Loren Humphrey at: 402-461-2324 or email to lhumphrey@cityofhastings.org.

Gateway Chapter Sports Turf Managers Association: The Chapter will hold a Golf Tournament and Meeting September 29 at the City of Bridgeton Course. For information on the Chapter or upcoming events, call Mike Krone, Missouri Baptist College, 314-392-2328 or email krone@mobap.edu.

Sports Field Managers Association of New Jersey: Rutgers University will be hosting a Sports Turf Workshop in conjunction with SFMANJ on Thursday, October 7, at Hort. Farm II in North Brunswick. Highlights include field tours of turfgrass traffic tolerance research and variety trials.

For information on the Chapter, or upcoming events, call SFMANJ at 908-730-7770 or Eleanora Murfitt-Hermann at 908-236-9118; or e-mail to HQ@sfmanj.org or visit the chapter's website: www.sfmanj.org.

Kentucky Sports Turf Managers Association: The Chapter will participate in the Kentucky Turfgrass Council Conference and Trade Show

November 9-11. A special Sports Turf Track will take place November 10.

For more information on the chapter or upcoming events, check out the website: www.kystma.org or contact Tom Nielsen at TNielsen@batsbaseball.com or Donnie Mefford at dbmeff00@email.uky.edu or call him at 859-257-1451.

Midwest Chapter STMA: The Chapter is offering scholarships and Field/Facility Awards to its members. Applications for each were sent out in



the August Newsletter. Copies are available by contacting Libby Baker as shown below. The scholarship is \$750 and can be used for attending the National STMA Conference in Phoenix, Arizona, January 19-23, 2005. The awards and scholarships will be presented at the Illinois Professional Turf Conference (IPTC) scheduled for November 30 to December 2, 2004.

For information on the Chapter, or pending activities, visit <http://mcstma.org> or call Libby Baker at 847-263-7603 or email Bake60ft6in@aol.com.

Sports Turf Managers Association of Arizona: For information on the chapter, or upcoming events, contact Chris Calcaterra at e-mail: chrisc@peoriaaz.com or tel. 623-412-4231 or Bill Murphy, at e-mail: bmurphy@ci.scottsdale.az.us or 480-312-7956.

Northern California Chapter of the Sports Turf Managers Association: For information on the Chapter, or pending events, call Janet Gift at 530-758-4200.

Southern California Chapter: For information on the Chapter, or pending activities, call Michael Tarantino at 858-679-2526 or MTarantino@powayusd.com.

Chesapeake Chapter STMA (formerly called Mid-Atlantic Athletic Field Managers Organization - MAFMO Chapter STMA): For information on the Chapter, or other pending activities, call the Hotline at 866-818-8873 or email Nick Gammill, CSFM, at ngammill@american.edu.

Georgia Sports Turf Managers Association:

For information on the chapter or upcoming events, contact Skip Kirby at 770-928-1580 or email skip@sportsturfmanagement.com

Indiana Chapter: For information on the Chapter, or pending activities, contact Stan Moscrip, Indiana University, at 812-856-2256 or smoscrip@indiana.edu.

Keystone Athletic Field Managers Organization (KAFMO/STMA): For information on the Chapter or upcoming events, contact Dan Douglas, Reading Phillies Baseball Club, at tel. 610-375-8469, ext. 212; or e-mail to: kafmo@aol.com.

Minnesota Chapter STMA: For information on the Chapter, or upcoming events, contact Jeff Hintz, Bethel College & Seminary, St. Paul, at tel. 651-638-6075 or e-mail: j-hintz@bethel.edu or check out the Chapter website: www.mstma.com.

MO-KAN Sports Turf Managers Association: For information on the Chapter, or upcoming events, call Mike Green at 913-888-8055 or mikegreen@3and2baseball.com.

Pacific Northwest Sports Turf Managers Association: For information on the chapter or upcoming events, contact Bob Christofferson at bchristo@mariners.org.

Tennessee Valley Sports Turf Managers Association (TVSTMA): For information on the Chapter, or upcoming events, call Chapter President, Bob Elliott, Tieco, at 800-239-9547 or Glenn Lucas at 800-837-8062; email to Glenn@tvstma.org, or visit the chapter's website: www.tvstma.org.

Virginia Sports Turf Managers Association: For information on the Chapter, or other upcoming events, contact: Bob Studholme, Fairfax County Park Authority via e-mail: Robert.Studholme@FairfaxCounty.gov or at 703-324-8590.

Wisconsin Sports Turf Managers Association: For more information on the Chapter, or other pending events, contact Chris Brindley at 715-346-3622 or cbrindle@uwsp.edu.

Forming Chapters:

North Florida STMA Chapter: The newly forming North Florida Chapter will meet September 22 at the University of North Florida Sports Complex. Events begin at 9 AM. For information contact: Mark Clay at 904-633-6116 or Jay McCord at 904-448-2583.

Other Area News:

Canada's Sports Turf Managers 17th Annual Field Day will be held from 8 AM-3 PM September 16 at the Mississauga Valley Community Centre in Mississauga, Ontario. For more information contact 519-763-9431 or visit the website: www.sportsturfassociation.com.

From the University of California

Establishing and Maintaining the Natural Turf Athletic Field

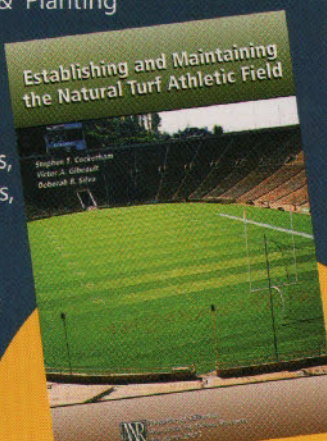
A thorough and practical guide to sports turf culture

- Choosing a site for a new field
- Construction & Planting
- Maintenance for optimum performance
- 8 color photos, 23 b/w photos, 8 tables
- Handy 6" x 9" format

56 pp. • \$18.00



<http://anrcatalog.ucdavis.edu>
1-800-994-8849



Circle 173 on card or www.oners.ims.ca/2914-173

Athletic Field Marking



- Factory Direct Personalized Service
- 4 White Striping Formulations to Suit Your Needs from Pros to Colleges, High Schools, Parks and Rec
 - Bulk and Aerosol
 - Custom Colors
- Golf Course Turf Colorant
- NEW! Line Painters and other fine products by Kromer Co.

When Your Game is on the Line



Suntec Paint, Inc.
1-800-333-1104
www.gamedaypaints.com

Circle 174 on card or www.oners.ims.ca/2914-174

GOOD THINGS HAPPEN...



AFTER MIDNIGHT

Introducing two advanced premium Kentucky blues from Turf-Seed, Inc.

Midnight II. Rich, dark green-blue and compact-growing. The next generation of Midnight with improved year-round color, increased resistance to rust and mildew, improved summer performance and hard-wearing traffic tolerance.

Midnight Star. Deep, dark green. A Midnight hybrid with more seed yield for improved economy, and stubborn resistance to stripe rust.

Combine either with our elite Kentucky blues — **Moonlight, Brilliant and North Star**, or with other quality Turf-Seed, Inc. varieties to create strong, diverse blends and mixes. From the diligent research and superior breeding of Pure Seed Testing come the latest Kentucky blues, two new turfgrass solutions available from Turf-Seed, Inc.



TURF-SEED, INC.

Your Success Depends on Seed / Satisfaction Guaranteed.

800-247-6910 • www.turf-seed.com
email: info@turf-seed.com • fax: 503-651-2351

Circle 175 on card or www.oners.ims.ca/2914-175

WHY SETTLE FOR SECOND BEST!

VC-60 VERTI-CUTTER

BY FIRST PRODUCTS, INC



THE VC-60 IS DESIGNED FOR CONTINUOUS HEAVY DUTY OPERATION ON ALL TYPES OF SPORTS TURF. THE UNIT HAS A PATENTED SWING HITCH THAT ALLOWS THE OPERATOR TO VERTI-CUT AROUND OBJECTS WHILE TURNING, WITHOUT TEARING THE ESTABLISHED TURF. PIVOT POINTS DESIGNED ON THE HITCH ALLOW THE UNIT TO FLOAT OVER UNEVEN TERRAIN. THE VC-60 CUTTING DEPTH IS EASILY ADJUSTED IN THE FIELD, WITHOUT TOOLS "UP TO 1 1/2 INCHES DEEP" USING QUICK RELEASE PINS.

CALL FOR A FREE VIDEO TODAY
800-363-8780

SALES@1STPRODUCTS.COM
WWW.1STPRODUCTS.COM

Circle 176 on card or www.oners.ims.ca/2914-176

"More fiber than Mom's bran muffins!"



Peat Inc.

golf • sports turf • horticulture

Organics You Can Trust

A Minnesota-based peat company servicing worldwide.

Peat, Inc. • Elk River, MN 55330
www.peatinc.com • 1-800-441-1880 or 763-441-8387

Circle 177 on card or www.oners.ims.ca/2914-177

MAINTAIN YOUR FIELD



WITH NEWSTRIPE STRIPERS

- 12 MODELS OF STRIPERS
- RIDERS • SELF PROPELLED • WALK BEHIND
- FIELD MARKING STENCILS
- MASCOTS, EMBLEMS, LETTERS & MORE
- DRY LINE MARKERS & DRAG MATS

CALL TOLL FREE
1-800-624-6706
1700 Jasper Street
Aurora, Colorado 80011
www.newstripe.com

Circle 178 on card or www.oners.ims.ca/2914-178



The Shindaiwa EB630 is the ultimate backpack blower. Reduces clean-up time by 50%.

- Incredible output: 613cfm, 201 mph
- Giant airfilter extends run times
- Ideal for toughest blowing jobs

We offer 4 commercial-grade models from the hand-held EB240S up to our most powerful blower, the EB630.

To find a dealer nearest you, call (800) 521-7733, or visit www.shindaiwa.com

shindaiwa
FIRST TO START. LAST TO QUIT.

Shindaiwa Inc.
11975 SW Herman Rd.
Tualatin, OR 97062

Circle 179 on card or www.oners.ims.ca/2914-179

Earth&Turf
At last! **NEW!!!**

A topdresser designed for sports turf managers!
MultiSpread™
There's nothing else like it for Spreading Infield Mix and Topdressing Turf Areas

- Save time and money by reducing hand labor
- Unique design allows spread width from 24" to 60"
- Affordable; one-person operation; no-tools adjustment

Earth&Turf
Simple, Well-built Products
TOLL FREE 1 • 888 • 693 • 2638

Circle 170 on card or www.oners.ims.ca/2914-170

Speed, Quality, Reliability...



Quality /kwol'itē/ n

1 that which distinguishes one thing from others; attribute; characteristic; 2 degree of excellence; 3 excellence, superiority; 4 See a Dixie Chopper dealer

Dixie Chopper's history is the definition of quality, with unprecedented component quality. This goes for either our mowers or the newly built chopper by Orange County Choppers, all are USA made.



To find the nearest dealer, click on dealer locator@

www.dixiechopper.com

Circle 169 on card or www.oners.ims.ca/2914-169

J-DRain®

SITE WATER DRAINAGE



- LIGHT WEIGHT AND EASY TO INSTALL
- VERY COST EFFECTIVE



UNIQUE DRAINAGE SYSTEM FOR NATURAL AND/OR SYNTHETIC TURF FIELDS. HUGE SAVINGS ON COST OF INSTALLATION!

JDR Enterprises, Inc.
292 South Main Street • Suite 200 • Alpharetta, GA 30004-1950
• 1-800-843-7569 • 770-442-1461 • Fax 770-664-7951
Website: <http://www.j-drain.com>

Circle 171 on card or www.oners.ims.ca/2914-171

You too can have Super Bowl Turf

PRINCESS-77
Hybrid Bermudagrass

and

1G2
Elite Perennial Ryegrass

PENNINGTON®
Seed supplier for Super Bowls 37-41

1-800-286-6100 ext 280
www.penningtonseed.com
sportturf@penningtonseed.com

Circle 172 on card or www.oners.ims.ca/2914-172

THE MULTISEEDER



DEEP SEEDED RESULTS

RESHAPING THE FACE OF NATURE

BLEC
USA INC.

864.225.3666 • www.blecusa.com

Circle 168 on card or www.oners.ims.ca/2914-168