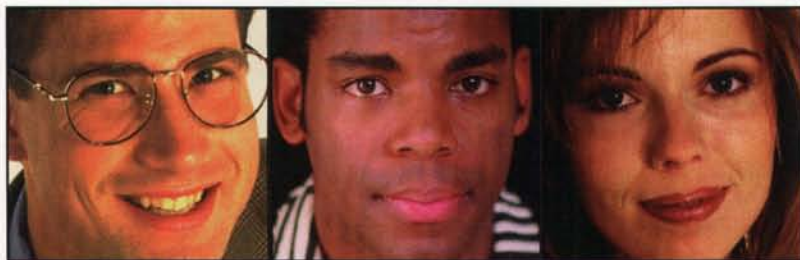


Use the
**ADAMS
FASTFAX
SYSTEM**

Simply dial our 800# and follow the simple instructions; when you hang up, the information you requested will be faxed immediately and directly to the fax number you entered.

Product Information for every **Tom, Dick, and Harriet.**



In every issue of our magazine, you can choose from more than 100 brochures covering the latest products, services, and company information.

Looking for the information is easy. Visit the Reader Service area on [greenindustry.com](http://www.greenindustry.com), and place your order today!

<http://www.greenindustry.com>

The fast way to get what you need.

Category Blast Service

Use this new Category Blast Service to get FREE information on the products or service categories listed below which you are planning to purchase within the coming nine months. You will receive information, and possibly other follow up contact, from appropriate companies advertised not just in this issue, but throughout the year in **sportsTURF**. Just circle the number(s) on the reader service card (opposite) corresponding to the product or service categories below and drop the card in the mail!

- 9001 **Aeration equipment**
- 9002 **Baseball Field grooming equipment**
- 9003 **Drainage**
- 9004 **Fertilizer / soil amendments**
- 9005 **Field covers**
- 9006 **Field marking paint / equipment**
- 9007 **Infield mixes**
- 9008 **Irrigation supplies**
- 9009 **Mowers**
- 9010 **Seed**
- 9011 **Site amenities**
- 9012 **Sod**
- 9013 **Turf equipment**

Photo courtesy: STMA



Trade shows offer sports turf managers the chance to learn about new products from top industry suppliers.

sending, "Aeration, Aeration, Aeration, Today's Market Offers Various Options." The program will wrap up with a question and answer session.

For information, contact Janet Gift: (530) 758-4200.

Iowa: The Chapter will participate in the Iowa Turfgrass Conference and Trade Show, Jan. 24-26, at the

Convention Center in Des Moines. A special sports turf track will again be offered.

Featured speakers include: Pete Taylor, the radio voice of the ISU Cyclones; Dale Getz, University of Notre Dame; Connie Rudolph, Midway Stadium; Dr. Dave Minner, ISU; Kevin Vos, Muscatine Soccer Complex; Dr.

Nick Christians, ISU; Jeff Salmond, Baltimore Ravens; Luke Yoder, Iowa Cubs; Brad Vermeer, City of Sioux Center; François Hébert, Lanco Amenagement, Inc.; Dr. William Meyer, Rutgers University; and United Airlines Flight 232 Pilot Captain Al Haynes.

Roundtable discussions return this year with the following topics: "Slow-Release Fertilizers: Pros & Cons;" "Rapid Repairs and Tricks of the Trade;" "Management of Skinned Areas;" "Using Effluent Water for Irrigation;" "Surfing the Net;" "Nutrition of Soil-Based Fields;" "Nutrition of Sand-Based Fields;" and "Effective Uses of Different Field Covers."

ISTMA will hold its annual meeting at the event.

For information, contact Lori Westrum at the Turf Office: (515) 232-8222, or fax: (515) 232-8228.

KAFMO: The Western Pennsylvania Turf Conference and Trade Show will be held Feb. 9-11 at the ExpoMart/Radisson Hotel in Monroeville, PA. KAFMO will hold its annual Athletic Field Conference at

Gotta Ball Field Problem?

Want to build a ball field? Plant some bases? Mark some lines? Make a pitcher's mound? Rejuvenate an infield? Wipe up water? Post a score? Protect spectators or players?

Give Beacon a call. We have the products you want and the know-how you need. Advice on how, when, and where to best use our ball field maintenance products. FREE for the asking. Call us at 1-800-747-5985 with your questions. We're happy to help.

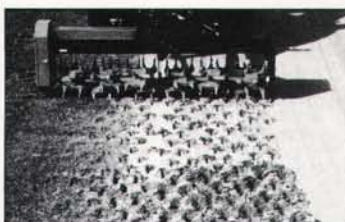
Don't forget to ask for your FREE 2000 Beacon Ballfields catalog.

1-800-747-5985
www.ballfields.com



Circle 118 on Inquiry Card

AERA-vator®



*The Multi-Purpose
Tool Versatile
Enough for Golf
or Sports Turf!*



Floyd Perry
1997 sportsTURF
Manager of the Year

"This is the only multi-faceted aerator on the market today for sports fields. It can fracture the hardest clay and the most compacted turf with ease and leave the surface in near game-ready condition. It's a winner for the progressive groundskeeper."

CALL US TODAY FOR A FREE BROCHURE WITH COMPLETE INFORMATION AND PRICING
800-363-8780 OUTSIDE GA. 912/382-4768

SALES REP & DEALER INQUIRIES WELCOMED.

Call 1 (800) 817-1889 use **Fast Fax #1190100** and/or Circle 119 on Inquiry Card

For perfect diamonds as easy as 1,2,3!

1. EDGE IT

With its adjustable guide shoe, the Bannerman **Diamond Edger** is surprisingly easy-to-use. Its three-inch blade depth and reversible, 20-inch concave disc work together to quickly eliminate ridging. Debris is spiraled into the infield for fast and easy clean-up.



DIAMOND EDGER: MODEL NO. B-DE-20



DIAMOND MASTER: MODEL NO. B-DM-6

2. GROOM IT

The **Diamond-Master**® (pictured) and **Ballpark-6**® groomers will give your ball diamonds a surface just like the professional teams demand, and reduce the time, effort and labour required to do the job.

3. LINE IT

The Bannerman **WetLiner** is a simple, practical tool for line marking of turf surfaces. Other wet liners spray, while our WetLiner paints each blade of grass to the ground for solid, longer lasting lines. Paint saver roller is available as an option.



WET LINER: MODEL NO. B-WLM-234



41 Kelfield Street, Rexdale, Ontario, Canada M9W 5A3
CANADA 1-800-325-4871
USA 1-800-665-2696

BaNNerman

THE HOME OF SPORTSTURF MAGIC

GreenNet

<http://www.greenindustry.com>



AgriBioTech, Inc.

<http://www.turf.com>



<http://www.ewing1.com>



<http://www.irrigationsupply.com>



<http://www.rotarycorp.com>

AMETEK
ACCESS BOXES

<http://www.ametekwater.com>



<http://www.geo-boy.com>



<http://www.jarraff.com>

Tanaka

<http://www.tanakapowerequipment.com>



<http://www.aquamasterfountains.com>



<http://www.glenhilton.com>



<http://www.deere.com>

Thompson

IRRIGATION EQUIPMENT SINCE 1907

<http://www.utirrigation.com>



<http://www.aquasapedesigns.com>



<http://www.heftee.com>



<http://www.k-rain.com>

TRANSAMERICA
DISTRIBUTION FINANCE
<http://www.transamerica.com>



<http://www.vermeer.com>



<http://www.bluebird.com>

Hot Box.

<http://www.hot-box.com>



Marvin Pruners & Saws
<http://www.pruner.com>



<http://www.wechapps.com>



<http://www.digcorp.com/asdig>

Hunter

<http://www.hunterindustries.com>



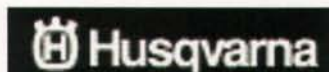
<http://www.netafim-usa.com>



<http://www.westcoastturf.com>



<http://www.ditchwitch.com>



<http://www.husqvarna.com>



<http://www.planthealthcare.com>



<http://www.weathermatic.com>

EROSION CONTROL
TECHNOLOGIES

<http://www.erosioncontroltech.com>

Irrigation Station



<http://www.irrigationstation.com>

the Holiday Inn at Grantville on Feb. 24. Along with vendor displays, the Conference will feature Dr. Dave Minner of Iowa State University, Andy McNitt of Penn State University and Steve Trusty of STMA.

For information, contact Dan Douglas, Reading Phillies Baseball Club: (610) 375-8469, ext. 212, or via the chapter e-mail address: kafmo@aol.com.

Wisconsin: For information, contact Rich Riggs, R. H. Rettler & Associates, Inc.: (715) 341-2633.

Indiana: For information, contact Terry Updike, B & B Fertilizer: (219) 356-8424, or Pat Hickner: (800) 672-4273.

MAFMO: For information, contact the hotline: (410) 290-5652.

Michigan: For information, contact Rick Jurries, West Ottawa Public Schools: (616) 395-2364.

Mid-South: For information, contact Jim Calhoun: (901) 755-1305, or Robert Bodi: (901) 383-2414.

Southern-California: For information, contact the hotline: (888) 578-STMA.

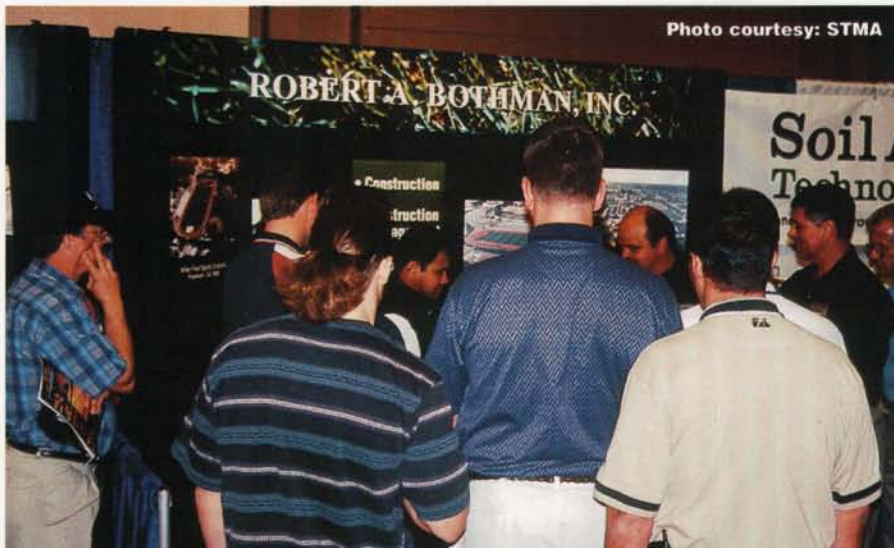


Photo courtesy: STMA

Trade show exhibitors include the specialized needs of sports turf managers in their displays.

Tennessee Valley: For information, contact Bill Marbet, Southern Athletic Fields, Inc.: (913) 380-0023, or Bob Hogan: (888) 224-6426.

Florida #1: For information, contact John Mascaro: (954) 341-3115.

Midwest: For information, contact

the hotline: (847) 622-3517.

Great Lakes: For information, contact Joe Zelinko: (800) 897-9714; Boyd Montgomery: (419) 885-1982; or the chapter website

Colorado: For information, visit: www.cstma.org, or call the hotline:

For Quality Turf

DEBRIS BLOWER

Goossen INDUSTRIES

P.O. Box 705 | Beatrice, NE 68310

TOLL FREE: 800-228-6542

IN NEBRASKA: 402-228-4226

FAX: 402-223-2245

WEBSITE: www.goossen.com

JACOBSEN•E-Z GO OF SOUTHERN CALIFORNIA

| | |
|---|---|
| <p>CORPORATE</p> <p>Corona, CA 91719</p> <p>Phone: (909) 371-1888</p> <p>Fax: (909) 371-1989</p> <p>Parts: (800) 4-JAC TURF</p> <p>Geno Souza, Sales Manager</p> | <p>DESERT</p> <p>41-921 Beacon Hill</p> <p>Palm Desert, CA 92260</p> <p>Phone: (760) 776-8873</p> <p>Fax: (760) 776-8877</p> <p>Ron Moore, Store Manager</p> |
|---|---|

NEW MID VAC

Call 1 (800) 817-1889 use **Fast Fax #1210100** and/or Circle 121 on Inquiry Card

(303) 346-8954.

Minnesota: For information, contact Connie Rudolph: (651) 646-1679.

North Texas: For information, contact Rene Asprion, Diamond Pro: (800) 228-2987; Dr. James McAfee, Texas A & M University: (972) 952-9220; or visit the chapter website: <http://www.ntstma.org>.

Chapters on the grow

Arizona: For information, contact: Bill Murphy, City of Scottsdale Parks & Recreation Department: (602) 312-7954, or Kris Kircher, City of Chandler Parks & Recreation Department: (602) 786-2728.

Kansas City, MO/KS: For information on this forming Chapter, contact Trevor Vance: (816) 504-4271; John Cundiff: (816) 525-7600; Bill Tritt: (816) 941-4424; Jody Gill: (913) 681-4121; Gary Custis: (816) 468-6215; or Jay Sutton: (816) 795-8873.

Nevada: For information on this forming Chapter, contact Ibsen Dow: (702) 649-1551, or Alan Paulson, Clark County School District: (702) 799-8724.



Photo courtesy: STMA

Educational sessions, workshops and round table discussions at STMA conferences facilitate the sharing of ideas, opinions and knowledge.



Photo courtesy: STMA

Regional turfgrass conferences help sports turf managers learn about and discuss issues unique to their area of the country.



Infield raincovers can now be installed in a minimum of time.



Even a full size fieldcover for football or soccer is easier to handle.

Field Protection Made Easy... with the FIELDCOVER SYSTEM by COVERMASTER®

You're always ahead of the game with the Fieldcover System by COVERMASTER®.

Thanks to this easy-to-use equipment, installation, removal and storage of a fieldcover can be quick and simple.

First, there's TARMATE™, a strong and lightweight plastic roller available in any length and

supplied with safety end caps.

Then comes TARP MACHINE™. Attached to the P.T.O. on your tractor, this clever handling tool makes light of rolling the cover on and off the field.

Finally, with our wide choice of cover materials, COVERMASTER® will custom design a cover in the size, weight and configuration that meet your specific needs.

The COVERMASTER® FIELDCOVER SYSTEM. You could say we have you covered. Call us today and see.



SEE THE ACTION ON VIDEO!



COVERMASTER COVERMASTER COVERMASTER

MASTERS IN THE ART OF SPORTS SURFACE COVERS



CALL TOLL FREE 1-800-387-5808

MEMBER
Sports & Turf
Managers Association

www.covermaster.com
E-mail: info@covermaster.com

COVERMASTER INC., 100 WESTMORE DR. 11-D, REXDALE, ON, M9V 5C3 TEL 416-745-1811 FAX 416-74-COVER (742-6837)

Circle 122 on Inquiry Card

The Benefits of Mulching

The myth of mulching

by John Cloutier

There is a myth out there that mulching clippings is not good for turf. The myth would have you believe that mulching builds up thatch and that the final appearance is inferior to mowing and bagging clippings. The reality, however, is quite the contrary. If you have the right equipment, you can mulch, get a great looking cut, and actually improve the health of your turf.

Mulching, sometimes called "grass-cycling," also recycles valuable nutrients into the turf while making significant strides toward waste reduction.

Mulching can also provide dramatic boosts to turf maintenance productivity. By eliminating the need to stop

and empty bags, then collect and dispose of clippings, turf care professionals can reduce the time it takes to cut grass on a property by 30 to 50 percent.

Mulching conserves water and keeps turf greener

Grass clippings contain nitrogen, phosphorus, and potassium. Grasscycling returns these nutrients to the turf, providing up to 25 percent of the lawn's total annual nitrogen requirement. Grass blades are between 70 and 80 percent water when freshly cut. When the grass is

chopped finely and blown deep into the turf, much of the moisture returns to the soil. Plus, the dry mulch acts as a barrier that reduces evaporation from the soil, further conserving water.



HUDSON® CFValve™

**Reduce chemical use up to 24%* . .
Less sprayer pumping, too!**

- Reduces number of times manual sprayer needs to be pumped!
- Regulates pressure for steady, even flow.
- Shuts off spray if pressure falls below set amount.
- Allows for constant, precisely calibrated spray application.
- Reduces drift and spray waste — *environmentally sound*.
- Makes operator training faster and easier.
- Available in: 15, 21, 29 and 44 psi (1, 1.5, 2 and 3 BAR.)

***Think of the work and money
you'll save in just one day!***

H. D. HUDSON MANUFACTURING COMPANY

Professional Division

500 N. Michigan Ave • Chicago, IL 60611-3769

Phone: 1-800-745-2392 Fax: 1-312-644-7989

E-mail: Valve@hdhudson.com www.hdhudson.com



***Less than
\$10 sugg. list***

*Based on independent tests in UK. Contact us for details.

Circle 123 on Inquiry Card

Buy online at

www.industrybooks.com

Feature

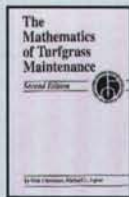
Bookstore

Full description of books can be found on www.industrybooks.com



Destructive Turfgrass Insects: Biology, Diagnosis, and Control, by Daniel A. Potter,

This book has the answers you need to control white grubs, mole crickets, fire ants, and other pests. Stinging and biting insects such as yellow jackets and ticks are included, as well as nuisance wildlife such as moles, raccoons, and more. Covers the biology, diagnosis, and control of virtually all of the insects and mites that attack warm and cool season turfgrasses. Over 250 full color photographs. 400 pgs. 4150 \$65.00



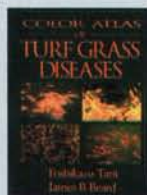
The Mathematics of Turfgrass Maintenance, 2nd edition, by Nick Christians and Michael L. Agnew,

This book provides you with basic mathematical principles of budgeting, fertilizer and pesticide application, the ordering of top-dressing, irrigation, and many other parts of golf course operations. 149 pgs. 4149 \$34.95



Maintain It Easy(Keep It Safe), by Grounds Maintenance Services

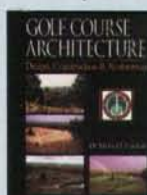
Learn from hundreds of instructional photos featuring all aspects of softball field groundskeeping. Explains: Lip reduction; setting of multiple bases and pitching plates; dragging equipment and patterns; base line options; unique complex ideas; dugout design; batting cage and hitting station; layout; water removal and much more. Unique field ideas from across the country. 4023 \$37.00



Color Atlas of Turfgrass Diseases on Golf Courses, by Dr. Toshikazu Tani and Contributing Author, Dr. James B. Beard

Presents over 350 high-quality color photographs of all the major turfgrass diseases that occur on both warm and cool season grasses and is international in scope. The standard color guide to disease diagnosis and pathogen identification for golf course superintendents and turfgrass practitioners. Maps are included to assist in disease identification by providing geographical locations where each disease/pathogen is likely to occur. It also provides color photos of step-by-step guidance on diagnostic techniques for laboratory analysis which can be used by practitioners. 140 pages. 4005 \$79.95

Golf Course Architecture Design, Construction & Restoration, by Dr. Michael J. Hurdzan



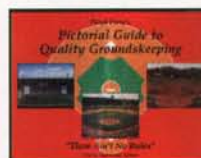
Described as "the modern bible of golf architecture," the book chronicles all facets of designing, building, renovating and restoring a golf course. Explains tee, green and bunker construction, turfgrass establishment and maturation, as well as drainage and irrigation trends and techniques. 326 color photographs and 80 course maps and drawings. 424 pgs. 4037 \$75.00

The Handbook of Technical Irrigation Information: A Complete Reference Source for the Professional,

by Hunter Publishing Group,



The first comprehensive reference manual that details all technical specifications for landscape irrigation. Designed to assist irrigation professionals involved in the planning and installation of residential and commercial systems, including contractors, landscape architects and irrigation. Also useful for instructors in irrigation training programs. It is divided into four sections: Formulas, Conversions, Tables and Friction Loss. 130 pp. 4026 \$21.00



Pictorial Guides to Quality Groundskeeping Book I and Book II,

by Floyd Perry,

The only textbooks on the market for the grounds supervisor, athletic coach, little league volunteer, or baseball purist. Over 500 photos in each text with many in color.

Book One, "Covering All The Bases" (100 pgs) covers Mound and Home Plate Repair; Edging, Dragging, Lip Reduction; Water Removal; Homemade Equipment and Tricks of the Trade.

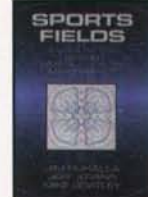
Book Two, "There Ain't No Rules" (108 pgs.) covers Football, Soccer, Softball, Little League, Minor League, College and High School Facilities. Also covers Curbside Appeal; Tricks of the Trade, New Ideas for Easy Maintenance; Professional Research from Higher Learning Centers and much more.

4008 Covering All The Bases-Book I \$36.60

4009 - There Ain't No Rules- Book II \$36.60

4022 - Pictorial Guides to Quality Groundskeeping 2 book set. \$69.90

Sports Fields: A Manual for Design, Construction and Maintenance, by Jim Puhalla, Jeff Krans, and Mike Goatley,



This book covers every important aspect of planning, design, construction and turfgrass maintenance with hundreds of illustrations and step-by-step procedures to help you get the job done right. No other book provides such intricate detail, combined with

easy-to understand guidance. Sports Fields is unparalleled in quality, practicality, and scope. In Part 1, you will learn the basics of turfgrass science and culture. Part 2 provides complete instruction on facility design, construction and renovation—for football, soccer, field hockey, lacrosse, and more. Part 3 covers other facilities such as playground surfaces, and volleyball courts. Procedures for equipment use, quality assurance, and safety are covered in Part 4. In Part 5, you will learn about stadium management, sand fields, turf paints, and many more useful topics. 600 pgs. 4084 \$74.95

Order Form

| | | | |
|------------------------|-------------------------------|------------------------------|-------------------------------|
| Name | | | |
| Title | | | |
| Company | | | |
| Type of Business | | | |
| Street (No P.O. Boxes) | | | |
| City | State | | |
| Zip | Country | | |
| Phone | Fax | | |
| E-mail | | | |
| Charge my Credit Card | <input type="checkbox"/> Visa | <input type="checkbox"/> M/C | <input type="checkbox"/> Amex |
| Signature | | | |
| Card # | | | Exp |

All Sales Final
Prices Subject to Change
No Purchase Orders Accepted
Payment must accompany all orders

| Quantity | Item Code | Price per Item | Total |
|----------|-----------|----------------|-------|
| | 4026 | \$21.00 | |
| | 4008 | \$36.60 | |
| | 4009 | \$36.60 | |
| | 4022 | \$69.90 | |
| | 4084 | \$74.95 | |
| | 4149 | \$34.95 | |
| | 4023 | \$37.00 | |
| | 4005 | \$79.95 | |
| | 4037 | \$75.00 | |
| | 4150 | \$65.00 | |

Add 8.25% tax for Illinois residents

Shipping & Handling (UPS delivery)
1-2 bks \$7.50 7-10 bks \$15.00
3-6 bks \$10.00 10+ bks \$21.00

International Shipping (add US\$20)

TOTAL AMOUNT DUE (NO COD)

Make checks payable to:
ADAMS BOOK GUILD

2101 South Arlington Heights Road, Suite 150
Arlington Heights, IL 60005-4142

Tel: 1-800-396-3939 •

Fax: 847-427-2037

Please allow 4 weeks for delivery

"In the summer when it's dry, we see the difference in the turf. Even with the same watering, our grass stays greener than neighboring turf where the clippings have been collected."

Mark Heinz
Heinz Landscape and Construction
Glenview, IL

The myth that grasscycling creates too much thatch is erroneous. In reality over-fertilizing, over-watering, and cutting too much of the grass blade causes stems, roots, and partially decomposed matter to build up on the top of the soil. The rapid decomposition of the tiny clippings produced by grasscycling helps to actually prevent thatch from developing.

Earthworms, beneficial insects, and microorganisms actually improve the quality of your soil and your lawn. Finely-chopped clippings, even leaves, make an excellent meal for these creatures and are quickly broken down, releasing valuable elements and humus to the soil. This is a natural

way to a great-looking lawn.

"We've been in the business 62 years, cutting large, private estates for some very particularly people. We started mulching four years ago. Now we mulch year-round, and I think our lawns are better for it. We've reduced our fertilizer needs, we're using less chemicals, and are seeing more earthworms. Mulching works wonders. With few employees, I've cut a lot of expenses. It really helps the bottom line."

Bill Antilety
Jacob Antilety Landscaping, Inc.
Long Island, NY



Photo courtesy: John Deere

Mulching bad for your lawn? Remember the facts. Mulching creates waste reduction, water conservation, a healthier soil, and keeps nutrients in the soil. With the right equipment, the finished cut produced by mulching can be picture-perfect.

John Cloutier is the National Marketing Manager for Exmark Mfg. Co., Inc.



Out front cutting with baskets for clippings.



Attractive striping shows off playing field.

Great Sports Striping At Superb Prices

- Light on your wallet – low initial cost and long life
- Great striping from the shearing reel cut of a National
- Smooth, clean cutting builds harder, healthier turf
- Easier to sharpen and lower operating cost
- Easier to maintain than rotary riding mower
- Easy rear turning wheel for high maneuverability

Visit us online: www.nationalmower.com
or call: 1-888-907-3463



700 Raymond Avenue • St. Paul, MN 55114
Fax (651) 646-2887 Email sales@nationalmower.com



Groom 2-4 acres an hour with National Mower 70" Sports Turf Triplex

NATIONAL® is a Registered Trademark of National Mower Company

Nothing makes sports turf look better than a National. The Best Price. The Best Cutting.

Circle 125 on Inquiry Card

Rookies Rookies Rookies

Self-Propelled Athletic Field Marking Machine



The BS2000 drives forward and reverse with adjustable speed control up to 4 miles per hour. A 12-gallon stainless steel tank reduces the number of delays for refilling. Standard equipment on the BS2000 is a fully adjustable spray box and a 12-foot hand hose with wand. The spray box is offset to eliminate straddling of fresh-

ly painted lines. Pioneer Manufacturing, Co.,
Circle number 136 on postage-free card

Trimmer Meets CARD II Standards



Redmax's BCZ 2500SU meets California CARB II and EPA standards for 2000 with RedMax's Strato Charged Air Head engine, the only engine to meet the 2000 standards

without the use of a catalytic converter. RedMax, a division of Komatsu Zenoah American, Inc.

Circle number 138 on postage-free card

18-ft. Variable Arc Nozzle



Opti-Gro Welcomes
STMA Members

success that's well-rooted.

Another Opti-Gro Success Story...

An outfield full of crabgrass. Bare soil from one hash mark to the other. A brown soccer field. Not exactly prime facilities, especially at a major NCAA university. But that's what Opti-Gro found when it started working on four athletic fields at one California university.

After just one year at the California school, things were looking up. Way up. All four fields were as healthy as any in the country—college or professional. The results were so great, Opti-Gro now maintains the entire athletic complex—proof again that the grass is greener on the Opti-Gro side.



Opti-Gro®
Growing Results

For a FREE soil analysis call 1-800-527-9919, Ext. 6791

Call 1 (800) 817-1889 use **Fast Fax #1240100** and/or Circle 124 on Inquiry Card