

Florida Chapter #1: The chapter will participate in the Florida Turfgrass Association Show in Tampa September 16-19. Stop by the STMA booth for updates on the chapter and on the national STMA.

A field construction and renovation seminar is planned for October 20, at Palm Beach Gardens. For information on these events, the Florida Chapter, or pending activities, contact John Mascaro: (954) 938-7477.

Northern California Chapter: For general information about the Nor-Cal STMA, contact Sal Genito, UC Davis: (530) 752-1691.

Southern California Chapter: The chapter is planning its annual community service project for early August at Mount San Antonio College in Walnut, LA County. For information on the service project, the Southern California Chapter, or pending activities, contact the chapter hotline: (888) 578-STMA (toll free in Southern California).

Chapters on the grow

Great Plains Chapter: Plans are moving forward on a fall workshop and for a workshop with Floyd Perry of

Grounds Maintenance Services. For information on these events, the Great Plains Sports Turf Managers Association, or upcoming activities, contact Mark Schimming, City of Wichita: (316) 337-9123.

Arizona Chapter: For information on the Sports Turf Managers Association of Arizona or upcoming events, contact Bill Murphy, City of Scottsdale Parks and Recreation Department: (602) 994-7954, or Kris Kircher, City of Chandler Parks & Recreation Department: (602) 786-2728.

Indiana Chapter: Plans are moving forward on the formation of a new chapter in Indiana. For information on this developing chapter, contact Terry Updike, B & B Fertilizer: (219) 356-8424, or Pat Hickner: (800) 672-4273.

Nevada Chapter: For information on the forming Nevada Chapter or upcoming events, contact Ibsen Dow: (702) 649-1551, or Alan Paulson, Clark County School District: (702) 799-8724.

Wisconsin Chapter: For information on the newly forming Wisconsin Chapter, contact Rich Riggs, R. H. Rettler & Associates, Inc.: (715) 341-2633. □

New Turf Problem Solvers

- ◆ Reduced turf clippings
- ◆ Aggressive tillering & fill in
- ◆ Improved mowing quality
- ◆ Very dark green color
- ◆ Better versus brown patch
- ◆ Durable under traffic
- ◆ Establishes new performance standards

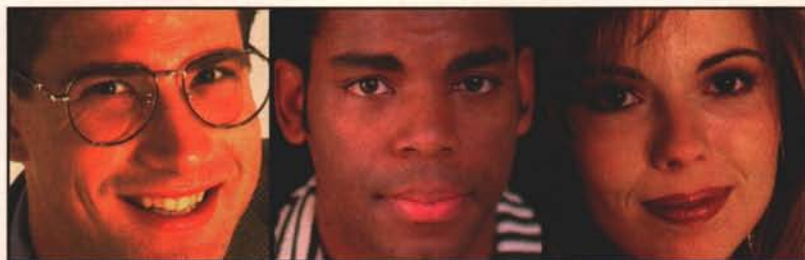


"Seeds for the 21st Century"
Burlingham Seeds
E. F. Burlingham & Sons
P.O. Box 217
Forest Grove, Oregon 97116
800-221-7333 503-357-2141
Fax 503-359-9223
Quality Seed since 1914

Product Information

for every

Tom, Dick, and Harriet.



In every issue of our magazine, you can choose from more than 100 brochures covering the latest products, services, and company information.

Looking for the information is easy. Visit the Reader Service area on [greenindustry.com](http://www.greenindustry.com), and place your order today!

<http://www.greenindustry.com>
The fast way to get what you need.

ADVERTISERS' INDEX

Burlingham Seeds	31
Covermaster, Inc.	9
Delta Bluegrass	14
Fine Lawn Research1	8
First Products, Inc.	21
Goossen Industries	15
Gordon Bannerman LTD	35
Jacobsen, Div. of Textron	5
John Deere Company, The	2-3
J.C. Whitiem Manufacturing Co.	23
Loft's Seed Company	36
National Mower	10
Partac / Beam Clay	20
Royal Seeds	22
Southern Laser, Inc.	15
Thomas Bros. Grass	23
Turfco Mfg. Inc.	30
Ty-Crop Turf Equipment Inc.	19
West Coast Turf	17

ADVERTISING SALES

sportsTURF

2101 S. Arlington Heights Rd., #150
Arlington Heights, IL 60005

GROUP PUBLISHER

Rich Perkins
(847) 427-2002
Fax: (847) 427-2041

ASSOCIATE GROUP PUBLISHER

Jeff Bouliden
(847) 427-2056
Fax: (847) 427-2006

MARKETING COORDINATOR

Ellen Norton
(847) 427-2011
Fax: (847) 427-2006

REGIONAL SALES REPS.

Deanna Morgan
(847) 427-3003
Fax: (847) 427-2006
AL, FL, GA, KY, LA, MD, MS,
NC, SC, TN, VA, WV

Gretchen Wagner
(847) 427-2058
Fax: (847) 427-2006
AK, AZ, CA, HI, ID, MT, NV,
OR, UT, WA, W. CANADA

REGIONAL SALES REPS.

Larry Anderson
17733 Bernadine St.
Lansing, IL 60438
Ph/Fax: (708) 418-3196
AR, CO, IN, KS, MO, ND,
NE, NM, OK, SD, TX, WY

Paul Garris
29100 Aurora Rd.
Salon, OH 44139
(440) 248-1125 Ext.241
Fax: (440) 248-0187
CT, DC, DE, IN, MA, MI,
NH, NJ, NY, OH, ONTARIO,
PA, QUEBEC, RI, VT

Colleen Murphy
Millennium Marketing
Group, Ltd.
306 E. Sunset Dr.
Arlington Heights, IL 60004
(847) 590-1162
Fax: (847) 590-1163
IA, IL, MN, WI

Susan Sims
966 E. Sutton Dr.
Fresno, CA 93720
(209) 434-2461
Fax: (209) 434-2462
CA (LA Co., Orange Co.,
San Diego Co.)

Classifieds Work!

Get Serious With STMA Application for Membership

The Sports Turf Managers Association (STMA) is an organization of professionals representing all segments of the sports turf industry. Our members work to combine the science of growing grass and the art of maintaining sports turf to produce playing fields that are both safe and aesthetically pleasing.

STMA provides members with a variety of benefits, including: education through regional institutes and conferences; support for sports turf research; facilities tours; a national awards program; access to the STMA National Conference and Exhibition; complimentary subscriptions to Sports Turf Manager and sportsTURF Magazine; and much more.

If you're serious about the sports turf industry, then it's time to become a member of STMA. Join today!

Member Information

Name _____
Title _____
Employer _____
Type of Business _____
Address _____
City _____ State _____ Zip _____
Phone _____ Fax _____
E-mail Address _____
Signature _____
Referred by _____
(ST8)

Membership Category (please check one)

- | | |
|---|-------|
| <input type="checkbox"/> Professional sports turf facility manager | \$85 |
| <input type="checkbox"/> Four-year colleges and universities sports turf facility manager | \$85 |
| <input type="checkbox"/> Other schools, research, ext. agents, teaching | \$85 |
| <input type="checkbox"/> Parks and recreational sports turf facilities | \$85 |
| <input type="checkbox"/> Commercial (US or International) | \$195 |
| <input type="checkbox"/> Additional members from same company | \$50 |
| <input type="checkbox"/> Student (non-voting) | \$20 |
| <input type="checkbox"/> International (other than commercial)
(must be in US dollars) | \$85 |

Total amount enclosed \$ _____

Please enclose payment (check, money order, Master Card, Visa, Discover or American Express) and send to:
Sports Turf Managers Association, PO Box 3480, Omaha, NE 68103-0480
For more information, contact STMA Headquarters at 800/323-3875

"Promoting Better and Safer Sports Turf Areas"

CLASSIFIEDS

POND AND LAKE LINERS

Buy direct from fabricator
20, 30, 40 mil PVC, Hypalon, HDPE
& Polypropylene.
Custom fabricated panels. Material only,
Material & Supervision or
Complete Installation Service available.



Colorado Lining
INTERNATIONAL

(800) 524-8672
1062 Singing Hills Rd.
Parker, CO 80138
(303) 841-2022 FAX: (303) 841-5780

OXYGEN-8

ORGANIC SOIL AERATION LIQUID



100% Oxygenation - Eliminates Costly Core Aeration
Guaranteed to Improve Turf & Ornamental Rooting

GreenPro Organics USA • 800-645-6464
GreenProWest Organics • 800-585-7959

SPORTSFIELD DRAINAGE

Plagued with a soggy field?
SLIT DRAINAGE may be the
answer to your prayers.

Why not give us a call?



LANCO

Tel.: 1-888-664-7489 Fax.: (514) 664-4555
e.mail: lanco@total.net
http://www.total.net/~lanco

HELP WANTED

Irrigation Service Technician and Crew Leader

Montgomery Irrigation has immediate openings for Technicians and Crew Leaders in both Maryland and Northern Virginia. Applicant must have excellent communication skills and be committed to customer service. Excellent compensation and benefits. Call 800-538-2326 or fax your resume to Chris 703-803-8003.

• Display Rates: (Per Column Inch)

1x: \$145 6x: \$120
3x: \$135 12x: \$105

• Classified Rate:

\$60.00 per column inch.
Minimum charge \$60.

• Business Card Rates:

1x: \$300 6x: \$275 12x: \$250

• Deadline:

The 1st of the month prior to
publication date.

• Note: Classifieds are payable in
advance. Ads using cuts or special bor-
ders will be charged at display rates. Ads
are non-commissionable. Blind ads will be
charged an additional \$10.

• For space reservation contact:

Sharon Handley, Classified Sales
2101 S. Arlington Heights Rd. Ste. 150
Arlington Heights, IL 60005-4142
(847)427-2044 • Fax (847)427-2037

HTTP://WWW.PIP.COM

Plug

COMPREHENSIVE LINKS TO INDUSTRY WEBSITES

ASSOCIATION INFORMATION

LIVE MODERATED DISCUSSION FORUMS

REFERENCE MATERIALS

GREEN-NET "YELLOW PAGES"

EXCLUSIVE EDITORIAL

EDITORIAL ARCHIVES

The Green Industry's Comprehensive Website

GREEN NET

to

http://www.aip.com

Photo courtesy: Sharyn Luka

Searching for

Dimensions

1.245 6.273 1.331

Have questions? Send them to Dave at: ISU, Hort. Dept., Ames, IA 50011.

by Dr. Dave Minner

Where do I go to get specific guidelines for layout and dimensions of sports fields? Specifically, I'm interested in the size of the base cutouts for an all-grass, women's fast-pitch softball field.

—Bob Stonebraker

Grass fields that host multiple sports will often cutout only the base and pitching areas, so that these small skinned areas can be easily sodded when converting the field for sports other than baseball or softball. The circle cutout for home plate must have a 13-foot radius, while the pitcher's mound should have a nine-foot radius cutout.

A 20-foot by 20-foot square should be used for all other base areas (See **Figure 1**). Replace the corner that faces the mound with a 45-degree diagonal. This diagonal should bisect the two sides closest to the mound.

It's important to remember that cutout bases are best suited for temporary fields. Permanent skinned infields are more durable, and are better suited for both softball and baseball.

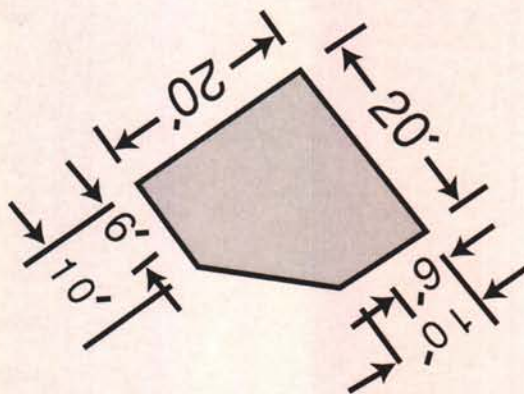
Dimensions and field layout

Different associations may have slightly different suggestions for field layout. Here are a few organizations that have excellent printed guidelines for field dimensions:

- **United States Baseball Federation**
2160 Greenwood Ave.
Trenton, NJ 08609
(608) 586-2381

- **American Amateur Baseball Congress**
118 Redfield Plaza
P.O. Box 467
Marshall, MI 49068
(616) 781-2002
- **National Federation of State High School Associations**
P.O. Box 20626
Kansas City, MO 64195
(816) 464-5400

Figure 1. Dimensions for third-base cutout



- **National Collegiate Athletic Association**
6201 College Blvd.
Overland Park, KS 66211-2422
(913) 339-1906
- **United States Soccer Federation**
1750 East Boulder St.
Colorado Springs, CO 80909
(719) 578-4678
- **American Youth Soccer Organization**
5403 West 138th St.
Hawthorne, CA 90250
(310) 643-6455

The organization, league, or federation that sponsors your particular sport

will have a set of guidelines for a suggested field layout. The key word here is *suggested*. The specific dimensions for boundary lines, pitching distances, hash marks, and other field components can easily be obtained through the listed organizations.

Even with the exact guidelines, there are many undefined dimensions. Some quantities are not specifically determined, and are left to the discretion of the coaches and field managers. These include: the width of the base path and the distance between the grass and the foul line; the shape of the mound area; the coaching boxes; the infield skin in the foul area around first and third bases; the cutout shape at first and third; and the fungo, on deck, and batter approach areas.

Sports turf managers should have an official set of rules that serve as guidelines for field dimensions. They should further understand that the loosely defined suggested dimensions offer a valuable opportunity to make changes that will allow more efficient management. Where time and resources are limited, an efficiently managed field often translates to better and safer playing conditions. □

David D. Minner, Ph.D., is an associate professor with the Department of Horticulture at Iowa State University. He serves on STMA's Certification Committee. Contact Dave at: ISU, Hort. Dept., Ames, IA 50011; or call: (515) 294-2751, fax: (515) 294-0730, or e-mail: dminner@iastate.edu.

The Finishing Touches



B-BP-6 Ballpark-6



BA-400 Multi-Ject



B-TR-6 Turf Roller



B-S-D-4 Simple Dimple



B-DM 6 Diamond Master



B-DE-20 Diamond Edger

Banner

41 Kelfield Street ~ Rexdale, Ontario ~ M9W 5A3 Canada
CDN 1-800-325-4871 ~ USA 1-800-665-2696