

ROOKIES

PRODUCT UPDATE

TURF AND PAVEMENT VACUUM



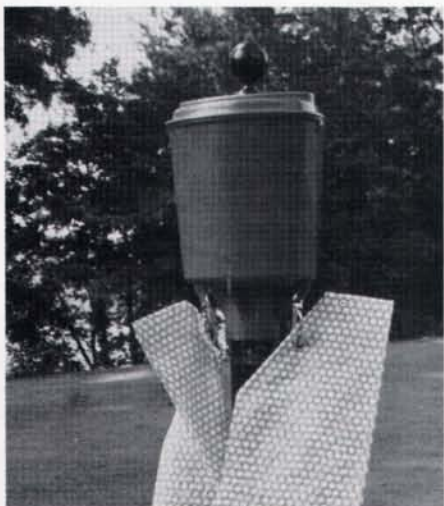
Powered by an 18-hp Kohler engine, the Promark Model 1050 is a towable turf and pavement vacuum. It has a sweeping width of 60 inches and a five-cubic-foot hopper capacity.

Material is picked up by air only, so there are no brushes or fingers to wear out. The optional, hand-held hose attachment makes it easy to reach difficult areas such as flower beds, corners, and shrubs.

PROMARK PRODUCTS, INC.

Circle 116 on Postage Free Card

BALL WASHER



Designed for durability and economy, the new LESCO six-pint-capacity ball washer features rigid ABS plastic construction. Its helix-shaped agitator, unlike crank-type agitators, provides superior agitation for complete cleaning. A minimum number of working parts ensures trouble-free service.

The red-plastic body resists damage, per-

mits painting as desired, and provides an attractive surface for personalized decals (which are optional).

The brush features long-lasting nylon bristles embedded in a durable rubber backing. The brush assembly is easily replaced by loosening four stainless-steel screws and one stainless-steel nut and removing the

entire brush-holder assembly.

Proper water level is maintained by an overflow drain. For simple installation, the ball washer can be mounted on any two-inch steel pipe (not included).

LESCO, INC.

Circle 196 on Postage Free Card

Locke makes the cut ...

at the finest playing fields around the world.



Locke Single

Locke Triplex

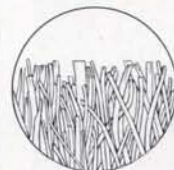
Locke Professional

On baseball, football, soccer fields and golf courses, Locke's cutting edge, a unique scissor action, produces a clean and uniform cut unmatched by the competition. While other mowers shatter or shear the grass, Locke reel mowers actually cut each blade of grass cleanly and consistently. The result is a uniform playing surface that maintains its healthy, green appearance and helps improve the quality of play.

Constructed from forged steel frames, machined cast-iron components and precision carbon steel blades, Locke mowers have been proven season after season. Powered by durable cast-iron engines, Locke mowers are built to last more than 20 years. So make your next cut with a Locke... Choose from the *Locke Single*, when maneuverability is crucial on smaller grounds; the *Locke Triplex*, setting the standard for commercial mower performance, quality and durability for over fifty years; or, a riding mower, the *Locke Professional*, is ideal for the larger sports turf grounds.

For the name of your nearest authorized dealer, contact Locke today.

THE LOCKE CUT VS. A TYPICAL MOWER CUT



Each blade of grass is cut cleanly and at a uniform height, which means healthier, greener turf.



Other mowers shatter the blades of grass, leaving uneven ragged ends which turn brown and expose the turf to disease.



Professional Quality Reel Mowers

Since 1928

Locke Mowers, Inc.

2133 Mountain Industrial Blvd., Tucker, GA 30084

(404) 939-1505 FAX (404) 491-6815

Ask for our Sports Turf Specialist

Dealer Inquiries Invited.

ROOKIES

PRODUCT UPDATE

VEHICLE-TOWED AERATOR



Designed to cover large turf areas quickly, the Cushman GA 60 is a high-production, coring-type fairway aerator. It can aerate up to 1.3 acres per hour, covering a 60-inch swath with a 2½-x-4½-inch coring pattern, at an aerating depth down to four inches.

The GA 60 is powered by a 33-hp, liquid-cooled engine mounted on the unit, which is towed behind a Cushman Turf-Truckster vehicle with a unique, rubber-isolated fifth-wheel attachment. By pulling one pin and backing off one hand screw, the fifth-wheel hitch is easily removable without tools.

Standard coring tines for the GA 60 are the new, non-plugging, open-back type introduced by Cushman for its Ryan aerators. Several other tine options are available for the GA 60, from 3/8- to 3/4-inch diameter.

The aerating mechanism features four pairs of tine arms, each protected by a slip clutch. The unit is lowered for operation by the Turf-Truckster hydraulic system, controlled by the operator from the vehicle seat. The aerator engine is started and monitored from the Turf-Truckster seat.

When the operator uses the hydraulic control to lower the aerator tines, the aerator engine automatically speeds up and the clutch engages to begin aeration. Forward aerating speed is regulated by the operator with the vehicle's variable-speed governor. The clutch is automatically disengaged and the aerator engine slows when the operator raises the unit.

The GA 60 is equipped high flotation tires, is 7½ feet wide and 42 inches high in transport position, and weighs 2,020 lbs. According to Cushman officials, the unit will

be available for spring, 1990 aeration programs.

CUSHMAN

Circle 101 on Postage Free Card

PAINT STRIPING MACHINE

To suit the needs of the individual, the Easy Rider paint striping machine can be configured in a number of ways. The unit offers a choice of one ten-gallon or two 20-gallon tanks; 10.2 or 14.2 cfm compressors; and a 12-hp drive and five-hp spray system.

Additional options include a reflective bead dispenser, skip line mechanism, and gun purge system. The Easy Rider is well suited for large striping jobs, such as athletic fields or municipal street parking. It can be purchased complete or mounted on the customer's modified tractor.

NEWSTRIPE, INC.

Circle 112 on Postage Free Card

Tests show 30-70% water savings with Toro's Soil Moisture Control System.



Rigorously tested in Arizona, Nebraska, Georgia, and California.

Simple. Accurate. Maintenance-Free.

Proven reliability.

Each sensor controls up to 10 acres.

For more information, contact your local Toro Distributor or call Toro at 714-688-9221.



Our FAX No. is
416-247-6540

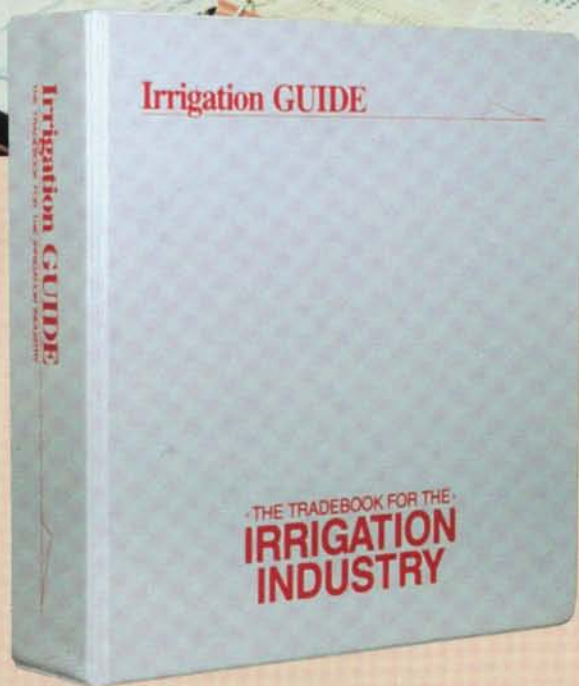
The pros say we dress better than the copycats.

The Bannerman TURF-TOPPER has been the world's leading topdresser for large turf areas for the past 5 years. **TURF-TOPPER is the original.** The other fellows sell one which resembles it, but the pros say "Ours is best". Perhaps we can arrange a demonstration for you through our nearest distributor (U.S.A. or Canada). Ask for complete details.



Gordon Bannerman Ltd • 41 Kelfield Street, Rexdale, Ontario M9W 5A3
Telephone 416-247-7875

Don't let your irrigation product information just trickle in!



With Irrigation GUIDE you have a professional product research and information service at your fingertips throughout the year.

With so many new irrigation products coming on the market throughout the year, it is easy to get the feeling that manufacturer's catalogs are steadily becoming far less current than you must be in your business.

Irrigation GUIDE has been created to keep professionals like yourself up-to-date as a regular monthly service. Not a "how-to" publication, Irrigation GUIDE is a collated turf irrigation product and specification trade book run on a subscription basis. If you're an industry professional, Irrigation GUIDE belongs on your desk.

30-DAY MONEY-BACK GUARANTEE

- The equipment of 90 manufacturers.
- Over 1500 turf irrigation products with specifications and current prices.
- Almost 400 pages—logically organized into 24 product sections.
- Easy reference and reliable head-to-head product comparisons.
- Monthly updates, the subscription service that keeps you current.

Irrigation GUIDE-Subscriptions Department
2014 Sepulveda Blvd., Los Angeles, California 90025

Please enter my subscription now for Irrigation GUIDE, the Tradebook service for the irrigation professional. Forward the current master volume, to be followed each month, for a year, by regular update insert data. If not completely satisfied, I may return the Irrigation GUIDE within 30 days under a full money-back guarantee.

Enclose payment of \$ 144.00 in check, money order, or purchase order/P.O. number for invoicing.

NAME _____
COMPANY _____
STREET _____
CITY _____ STATE _____ ZIP _____

Irrigation GUIDE
The Tradebook for the Irrigation Industry

(213) 477-1017

Circle 161 on Postage Free Card

ROOKIES

PRODUCT UPDATE

PREFABRICATED DRAINAGE STRUCTURE

Lundin & Company, Inc., has introduced a prefabricated drainage structure for sub-surface drainage applications.

The drain, called Lun-Drain Pro 80, consists of a waffle-like polystyrene core with

low "creep" characteristics and compressive strengths exceeding 5000 psf. The core is wrapped with an eight-ounce polyester, needle-punch, non-woven filter fabric. The fabric is tightly wound around the core and melt-sealed using two glue bead lines to ensure strength.

Flow rates of the drain exceed 18 gpm

per foot width of drain at one psi (approximately two feet of installed depth). The product is available in four, six, 12, and 18-inch widths. Each drain is 100 feet in length, but additional lengths are available.

LUNDIN & CO., INC.

Circle 175 on Postage Free Card

PREGERMINATING UNITS



Liquid Sod Corp. introduces a revolutionary new concept in pregerminating a wide variety of grass seeds, the pregermination unit. It markedly increases seed yields while reducing turf establishment time.

The units provide durability and portability with minimum space utilization. Liquid Sod pregerminating units are a low cost, high profit alternative to existing pregerminating methods.

Special features include: Efficient aerating method that reduces fermentation (seed spoilage); Screened drain plug for reduced handling and seed loss; 150 pounds plus capacity; Four models to choose from; Full line of pregermination supplies.

Pregermination is gaining popularity because it provides advantages over conventional seeding methods such as: controlled germinating environment for faster turf establishment, reduced vulnerability to erosion, enhanced competitiveness against weeds, protection against seed consuming predators, and increased customer satisfaction.

**Liquid Sod, 2095 Euler,
Brighton, MI 48116
(313) 227-5066**

Circle 182 on Postage Free Card

SCOREBOARD

CLASSIFIEDS

CLASSIFIED ADVERTISING RATES: \$45.00 per inch payable in advance. One inch minimum. There are about 50 words per inch. Send copy with check for \$45.00 at least four weeks prior to issue date to: Classifieds, sportsTURF magazine, P.O. Box 8420, Van Nuys, CA 91409. Blind box numbers are available. Special borders and rules will be billed at display advertising rates. Classified ads are not commissionable.

STOLON PLANTING SERVICE

We plant large turf areas mechanically. From Sod to planted Stolons in seconds. FAST — ECONOMICAL — PROVEN. Call or write for brochure and specifications (TF).

FLANNIGAN Stolon Planting Service

301 La Salle Ave., Ventura, CA 93003
(805) 644-6630

SPORTSFIELD DESIGN, RENOVATION, AND CONSTRUCTION

Whatever your sport, whatever the level of play, and wherever the location, Sportsfield, Inc., can provide all the services required to meet your needs. Our team of experienced personnel can

design, renovate or construct your playing fields. Do it right the first time! Call or write for our brochure, P.O. Box 615, Blue Island, IL 60406, (312) 371-0917.

DRAINAGE PROBLEMS?

Don't rebuild your sports fields. The Verti-Groove is an inexpensive alternative to improve drainage. Deep aerify and create sand slices six inches deep and one half inch wide without materially disturbing play. Call or write to:

Turf-Tec International
2210 NE 124th Street
N. Miami, FL 33181
(305) 893-6449

ADVERTISER INDEX

Bannerman	32
Baseball Diamond of the Year Award	19
Brouwer Turf Equipment Ltd	5
Brown Manufacturing	15
Cushman Corp	6,7
Four Star Agricultural Products	16
Green Care International	35
Irrigation Guide	33
Karsten Turf Co	19
Lesco Inc	36
Liquid Sod Inc	34
Locke Mower Co	31
Missouri Paint Co	22
Modus-T	3
Neptune Research	26
Newstripe Inc	16
Partac Peat Corp	34
Regal Chemical Co	30
Ronk Electric	26
T.I. International	17
Tee-2-Green	2
Toro Irrigation	32
West Coast Netting	29

Terra-Green

REDUCE RAIN DELAYS!

WITH
THE REDDER, LESS DUSTY
SOIL CONDITIONER & DRYING AGENT
THAT RETAINS MOISTURE
IN HOT WEATHER

PARTAC[®] GREEN SAND FOR DIVOT REPAIRS

The Ultimate Solution to Unsightly
Divots at Televised Golf Tournaments
and other Sports Events!

AVAILABLE NATIONWIDE

1-800-247-2326

IN N.J. 201-637-4191

PARTAC PEAT CORPORATION
KELSEY PARK, GREAT MEADOWS, N.J.
07838

Circle 144 on Postage Free Card

PARTAC[®] GOLF COURSE TOP-DRESSING



AMERICA'S PREMIUM
TOP-DRESSING
HEAT TREATED
CONTROL THATCH,
PROMOTE HEALTHY TURF
& SMOOTH PLAYING SURFACES



THE PROFESSIONAL'S CHOICE
... SINCE 1922

THE BASEBALL DIAMOND MIXES
USED BY OVER 50 PROFESSIONAL
TEAMS PLUS TOWNS AND
SCHOOLS ACROSS THE U.S.A. AND
CANADA. SPECIAL MIXES FOR
INFIELDS, PITCHER'S MOUNDS,
HOMEPLATE AREAS, &
WARNING TRACKS.

The Ultimate Turf Team

CORE MASTER 12

Fits All Tractors

The Ultimate Aerator

GreenCare has combined high-tech engineering and simple design to produce the strongest, most versatile and efficient aerator on the market today. Vertical aeration combined with variable pattern, variable depth and a variety of tine types and sizes provide today's Turf Specialists with the tool they need to tailor aeration to their requirements.



Core Collection System

- Simply attaches to rear of CoreMaster.
- Auto-reset on next aeration pass.
- Removes cores as you aerate and automatically dumps cores at the end of each run.
- One man can do the work of four.
- No other expensive machines or operators required.
- On golf greens, play can continue during aeration.

SPREAD MASTER

The Ultimate Topdresser

GreenCare engineering leads the way in Turf Equipment Innovation again:

- All hydraulic drive.
- Tubular steel and zinc annealed sheet metal construction.
- Roller drum eliminates conveyor belt problems.
- Internal rotating baffle prevents "material surge" at the start of each run.
- Independent control of brush speed, drum rotation and gate opening provide precise rate of application.
- Flared top for easy filling with front-end loader.



GREENCARE[®]

INTERNATIONAL

(714) 842-6003

FAX: (714) 842-1707

17851 GEORGETOWN LANE, HUNTINGTON BEACH, CA 92647

For more information and your nearest distributor, contact the pros at GREENCARE. They'll be happy to share the news.
Circle 269 on Postage Free Card