

Even more
It's kid proof



Denser, darker green Manhattan II takes the bruises for your athlete

What goes up must come down . . . and that goes double for athletes' knees and elbows.

Improved Manhattan II perennial ryegrass has a built-in cushion developed through genetic improvement. The greater tiller density of Manhattan II takes the punishment athletes dish out, then springs back to retain its great-



looking appearance. All that toughness . . . with improved mow-ability to boot!

Manhattan II also provides a darker green color than the old standard Manhattan; improved disease resistance, drought and shade tolerance as well as fertilizer savings.

Manhattan II was developed to save on maintenance costs . . . but the *real* saving is on knees and elbows!

"Fall on the leader"
Manhattan II
TURF-TYPE PERENNIAL RYEGRASS

Qualified turf associations can earn cash for turf research by saving Manhattan II blue tags. Contact your dealer for details.



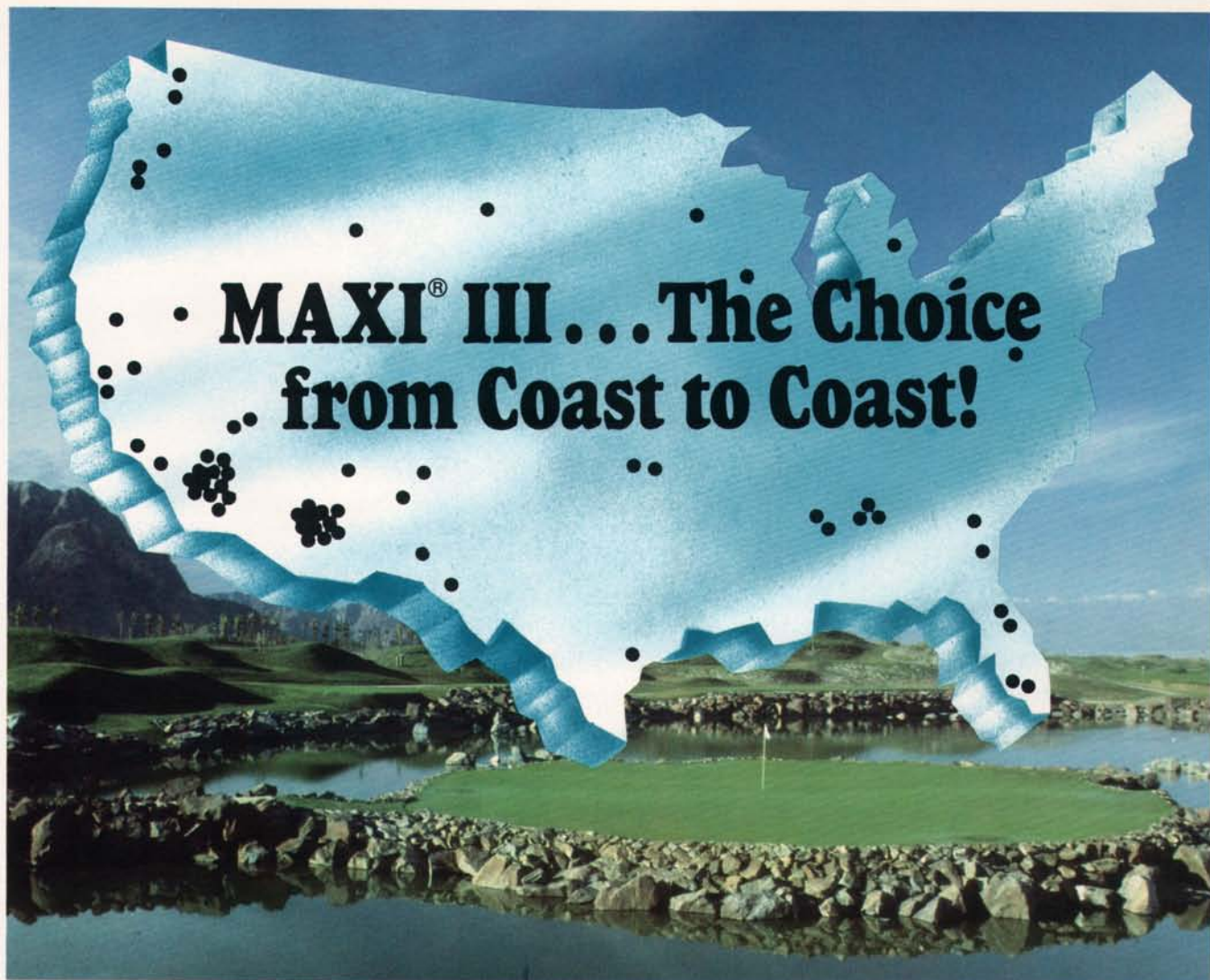
Distributed by

Turf Merchants, Inc.

P.O. Box 1467 • Albany, OR 97321
Outside Oregon 800-421-1735
503/491-3622 TWX 910-997-0733

Turf-Seed, Inc.

P.O. Box 250 • Hubbard, OR 97032
503/981-9571 TWX 510-590-0957



MAXI® III... The Choice from Coast to Coast!

Golf's Premier Irrigation Control System

Repeatedly the choice of the world's leading architects and superintendents, MAXI® III from Rain Bird is recognized as golf course irrigation's most exciting and versatile computerized control system.

Sophisticated. Reliable. Powerful. MAXI® III offers state-of-the-art irrigation technology. An IBM computer, too. Not to mention the ability to handle a wide range of important functions. Lighting—security—and a host of other necessary operations.

Legends in the making—the great golf courses of tomorrow are being built today. And MAXI® III is there!

Controllers. Rotors. 50 years of golf course irrigation experience.

Rain Bird — the choice from coast to coast



RAIN BIRD

Rain Bird Sales, Inc., Golf Division, 145 N. Grand Avenue, Glendora, California 91740

STAFF

PUBLISHER **DENNE GOLDSTEIN**
ASSOCIATE PUBLISHER **BRUCE SHANK**
EDITOR **ANNE GOLDSTEIN**
ASSOCIATE EDITOR **JAMES GREGORY**
CONTRIBUTING EDITOR **RICHARD SMILEY**
ADVERTISING DIRECTOR **JEFFREY JAMPOL**
ADVERTISING SALES **RON VAN METER**
PRODUCTION MANAGER **STACEY GOLDSTEIN**
ART DIRECTOR **MARK KOPRCINA**
CIRCULATION **DENISE ALLEN**
ADVISORY BOARD **TOM COOK, WILLIAM DANIEL,
ROBERT FRIETAS, VIC GIBEAULT, ROY
GOSS, FRED GRAU, HENRY INDYK,
WILLIAM KNOOP**

ADVERTISING AND EDITORIAL OFFICES

P. O. BOX 156, ENCINO, CA 91426-0156 / 818-343-4334

SUBSCRIPTION RATES

ONE YEAR \$18
TWO YEARS \$30
FOREIGN (ONE YEAR) \$40

GTP Gold Trade
Publications, Inc.
P.O. BOX 156, ENCINO, CA 91426
(818) 343-4334

OTHER GOLD TRADE PUBLICATIONS

LANDSCAPE & IRRIGATION,
ARBOR AGE,
IRRIGATION JOURNAL

EXECUTIVE STAFF

PRESIDENT **DENNE GOLDSTEIN**
VICE PRESIDENT **BRUCE F. SHANK**
VICE PRESIDENT **ANNE GOLDSTEIN**
VICE PRESIDENT **STACEY GOLDSTEIN**
VICE PRESIDENT **RANDI GOLDSTEIN**
VICE PRESIDENT **IRA GOLDSTEIN**
MASCOT **JOJO**

sportsTURF Magazine

is published monthly by GTP, Inc. Material in this publication may not be reproduced or photocopied in any form without the written permission of the publisher.

Copyright ©1987. Member of the Business Publications Audit of Circulation, Inc.



SECOND CLASS POSTAGE PAID at Van Nuys, CA
(ISSN 0890-0167)

Postmaster: Please send change of address form 3579 to sportsTURF magazine, P. O. Box 156, Encino, CA 91426-0156.

VOLUME THREE, NUMBER FIVE

MAY 1987

MAIN EVENTS

14 THE EVOLUTION OF THE SUPER-RANGE

Without taking up more space than the typical driving range, a growing number of golf courses are turning single-purpose ranges into multi-purpose super-ranges. By adding practice greens, target greens, practice bunkers and more tee area, superintendents have brought a new dimension to ranges to help golf instructors generate revenue for their courses. This story traces the super-range from its roots at Pinehurst in North Carolina to its perfection by Jack Nicklaus at the Hills of Lakeway in Austin, TX, and Grand Cypress Resort in Orlando, FL.

22 CHOOSING THE RIGHT FUNGICIDES FOR TURFGRASS DISEASES

Fungicides have changed considerably in the past few years says author Dr. Richard Smiley. Sports turf managers need to apply these newer fungicides differently than older ones to get the most out of their disease control budget. The most efficient program might be a combination of old and new fungicides in order to thwart problems with fungicide resistance and plant damage. Smiley provides this excellent overview of turf fungicides on the market today and how to use them most effectively.

LINE-UP

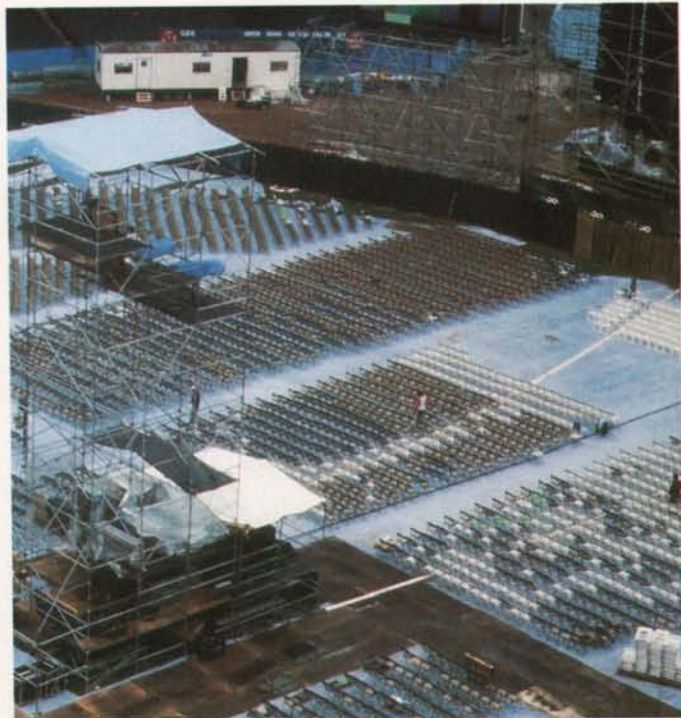
- 11 FROM THE PUBLISHER
- 12 THE FRONT OFFICE
- 12 EVENTS
- 33 CHALKBOARD
- 34 ROOKIES
- 42 SCOREBOARD

COVER: An instructor at Pinehurst Resort in Pinehurst, NC, works with a student on the tee of the first "super-range."

Use Warren's® TerraCover®

**100% Polyester + Ground Blanket
to cover and protect
your natural or artificial turf.**

It *breathes* naturally . . . assures free passage of oxygen, carbon dioxide, water and some sunlight so turf stays healthy, beautiful and green.



TerraCover® . . . for entire Sports Fields and Stadium Turf Areas



TerraCover® Bench Tarp for Bench Areas, Infield Areas, etc.



TerraCover® is tough, to withstand *heavy* traffic. Protects natural and artificial turf against crowd foot traffic, heavy portable grandstands, light towers, equipment trucks, trailers and TV camera runways.

TerraCover® is safe because it replaces expensive, hard-to-handle plywood sheets and other materials that can smother, burn or crush natural turf.

TerraCover® also protects artificial turf from being crushed . . . and from being damaged by cigarettes, liquid spills and other 'junk'. And, clean-up is easier and faster.

TerraCover® is easy to put down and take up . . . can be ready for the crowds in far less time than plywood.

Finally . . . here's a solution for protecting turf against damage from the cleats of football and soccer players, coaches and others moving along sidelines and in team bench areas. Keeps coaches and players cleaner, dryer *and* happier.

TerraCover® Bench Tarps take only minutes to install. The leading edge has polyester binding tape (lock-stitched in place) and grommets every 3 ft. that help hold it flat to the turf (you also set the team benches right on the TerraCover® fabric). Each 16 ft. x 75 ft. bench tarp rolls up to an 8 ft. wide roll (custom sizes are available for pro football and other special requirements).

+Made from Trevira® (Reg. TM of Hoechst AG)

"Wherever you put down roots, go with the PROs."

Warren's®

TURF PROFESSIONALS

7502 South Main Street, Crystal Lake, Illinois 60014

Direct all requests for information to:

Warren's Seed & Special Products Division

P.O. Box 459, Suisun City, CA 94585

Or call 1-800-828-TURF (8873). In California call 1-707-422-5100

Circle 112 on Postage Free Card

Buy Sevin® SL for this.



White Grub

Your reasons for choosing a turf insecticide could be summed up in two words:

Kills grubs.

Which, frankly, is reason enough to choose SEVIN® brand SL carbaryl insecti-

cide. Because, when it comes to grubs, no other turf insecticide is more effective.

We have the efficacy data to prove it.

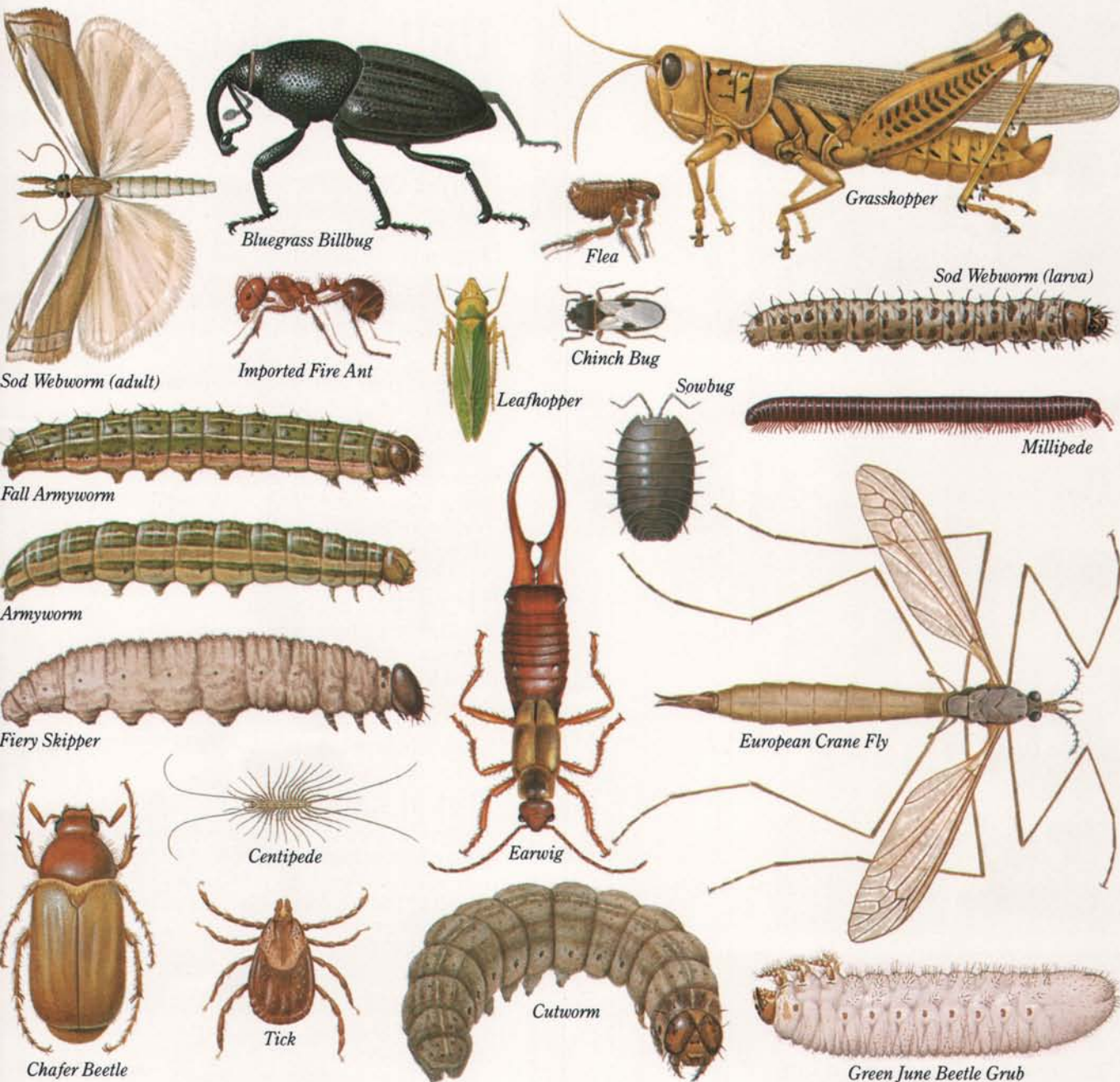
But if that still isn't enough to make you a con-

firmed SEVIN® brand SL user, consider this:

With SEVIN® brand SL carbaryl insecticide, you also get effective control of 27 other turf pests.

Including tough ones,

Get these free.



like chinch bugs, billbugs, armyworms, cutworms, and sod webworms.

And SEVIN® brand SL carries a Toxicity Category III Caution label. Which makes it ideal for use on golf

courses, parks, lawns, or any turf area frequently used by people and animals.

So ask your turf chemicals supplier for SEVIN® brand SL carbaryl insecticide. It may be the best

example yet of getting more than what you pay for.

From the turf care group at Union Carbide.

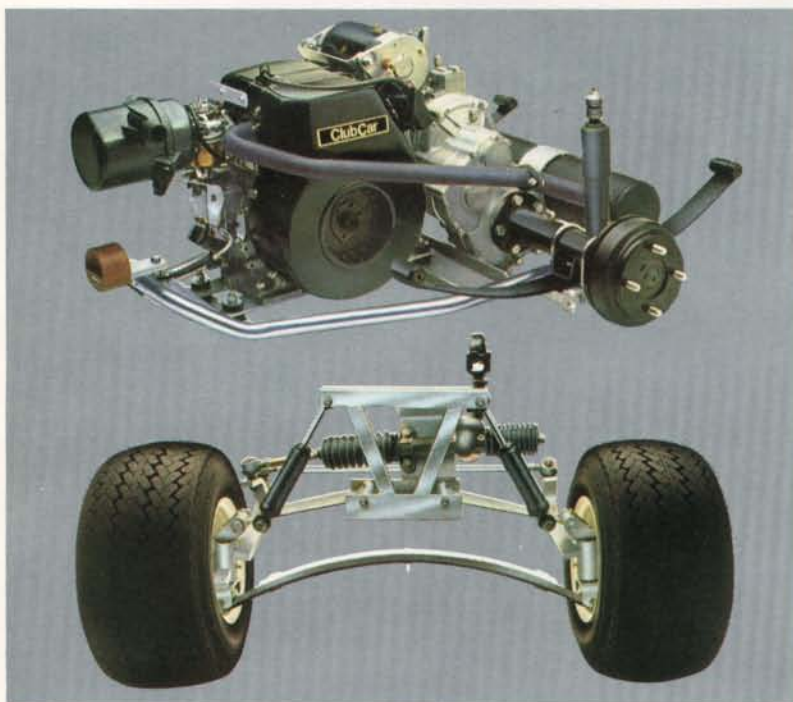


Club Car's New Carryall II



Will Out-Tough Any Utility Vehicle In The Field.

Out-Perform Exclusive Club Car features like the Fresh Air Intake System*, Cable-Less Choke Assembly*, and Synchro-Mesh transmission with Neutral "Lock-Out"* combined with the Tilt Pickup Bed of Double Wall Construction*, enable the Carryall II to out-perform competitors in every category.



Out-Haul With the largest pickup bed (50" x 50" x 11") and biggest gross payload (one-half ton) in the industry, the Carryall II becomes the most functional, practical and economical vehicle around. In addition to carrying passengers, tools, equipment, parts and packages, the Carryall II has a towing capacity of 1,000 lbs.

Out-Pull Club Car's 4 Cycle/341 cc Engine*, the largest in the industry, gives the Carryall II the power to haul one-half ton loads without stress and vibrations. The 8.0 plus Gallon Fuel Tank*, is also the largest in the industry allowing for more work hours per tank than any other utility vehicle.

Out-Maneuver The Carryall II is designed to maneuver in tight aisles and small spaces with a clearance circle of 20'8", the tightest in the industry. The True Rack & Pinion Steering* feature along with direct linkage and self-adjusting components provides a "power steering feel".



Out-Last The Carryall II will last and last. Club Car exclusives like the Rust-Free Aluminum Pickup Bed & Frame* make the Carryall II virtually maintenance-free. The Double Wall Pickup Bed Construction* of light-weight durable aluminum allows for a longer, more productive life span and a wide range of applications.

*Carryall II Exclusive Features



Club Car, Inc./P.O. Box 4658
Augusta, Georgia 30907-0658 U.S.A.