

EVENTS

CALENDAR

NOVEMBER

2-6 16th Annual Educational Conference, National Institute on Park and Grounds Management, Louisville, KY. Contact NIPGM, P.O. Box 1936, Appleton, WI 54913. (414) 733-2301.

3-4 Carolinas Irrigation Trade Show, Adams Mark Hotel, Charlotte, NC. Contact Smith Turf & Irrigation Co., (704) 393-8873.

10-12 Golf Turf Conference, Keller Conference Center, Pennsylvania State University, University Park. Contact Dr. Joseph Duich, Department of Agronomy, 21 Tyson Building, University Park, PA 16802. (814) 865-9853.

11-13 1986 Oklahoma Turfgrass Conference and Trade Show, Lincoln Plaza, Oklahoma City, OK. Contact Michael Kenna, Oklahoma State University, 335 Agricultural Hall, Stillwater, OK 74078. (405) 624-5404.

11-13 Green Team Exhibition, PGMS-ALCA joint trade show, Milwaukee Exposition and Convention Center, Milwaukee, WI. Contact the Professional Grounds Management Society, 3701 Old Court Rd., Suite 15, Pikesville, MD 21208. (301) 653-2742.

17-20 1986 Professional Lawn Care Association of America Conference and Show, Baltimore Convention Center. Contact Jim Brooks, PLCAA, 1225 Johnson Ferry Rd. N.E., Suite B-220, Marietta, GA 30067. (404) 977-5222.

DECEMBER

1-4 New Jersey Turfgrass Expo, Resorts International Hotel, Atlantic City, NJ. Contact Dr. Henry Indyk, Rutgers University, Soils and Crops Dept., New Brunswick, NJ 08903.

8-11 Ohio Turfgrass Conference and Show, Ohio Center, Columbus, OH. Contact the Ohio Turfgrass Foundation, (614) 422-2601.

12-13 Southern Nevada Desert Turfgrass Conference, Palace Station Hotel/Casino, Las Vegas. Contact Bob Morris, Nevada Cooperative Extension, 953 E. Sahara, Suite #207, Las Vegas, NV 89104. (702) 731-3130.

THE FRONT OFFICE

OPINION PAGE

SCHOOLS DISCOVER VALUE OF CONTRACT MAINTENANCE



Public schools have tried a number of ways to balance tax revenues with expenditures in the past few years. They have squeezed one or two more years out of textbooks, replaced retiring teachers with teachers fresh out of college and reduced extracurricular programs.

However, some things can't be cut. These are physical plant concerns such as heating and air conditioning, roof repairs, painting and cleaning. Like the overhead of any business, these are costs the schools must pay to fulfill their intended purpose.

In their austerity programs, school administrators have not treated athletic fields with the same concern as other parts of the school's physical plant. They have tried to delay or reduce important field maintenance, often on the advice of their physical plant directors. It's not a case of insufficient concern, it's a case of insufficient knowledge. How can a school administrator or physical plant director know every important fact about every item under their care? They simply can't.

There is a trend in other physical plant areas to contract out service and repairs. Although some school districts still have heating and air conditioning technicians on staff, more and more school systems are depending upon contractors to perform both maintenance and repairs. Cleaning, food service and painting are being contracted out to take the labor burden off the school district and to take advantage of special skills of contractors.

Since contractors deal in one type of work every day, they are more knowledgeable of the small things that can make a big difference. Their experience provides them with skills not usually found in a general maintenance person employed by a school. Although contractors are profit-motivated and often find it difficult to make a decent profit on bid contracts, their reputation depends upon the quality of their work. They must pay attention to all details to achieve the quality they want associated with their name.

One problem with contract sports turf care is the small number of contractors that depend largely on this type of work. Many general landscape maintenance contractors may solicit sports field work without really knowing the special details. Their reputation is less at risk if the quality of their work is poor to average. They lump sports turf work with general maintenance and see little difference between the two. They often win the bid by not making important distinctions between commercial or residential maintenance and sports turf.

Contractors who specialize in sports turf maintenance, or have a sports turf division, can play a vital role in the future quality and safety of public school athletic fields. They have the skills and the desire to keep this important part of the school's physical plant as well-maintained as the other parts. By contracting out sports field construction and maintenance to them, schools can achieve the quality of turf necessary to keep injuries at a minimum and keep school pride at a maximum.

It's time for school administrators to recognize that athletic fields are as important as furnaces and that sports turf contractors are as vital to the maintenance of fields as contractors are for other parts of the physical plant.

Bruce Shank



Mississippi State University:

The World's Big



Scott Stadium has served as an important site for the evaluation of the PAT System in southern climates. For more than 12 years it has stood the test of 30 games per season.

Don't look for it in "The Guinness Book of World Records." Even Ripley might not believe it if he were still around. But count on it anyway: Mississippi State University (MSU) has the world's biggest classroom.

That's because all 1,000 acres of the MSU campus are the real classroom—and the lab as well—for its Department of Landscape Architecture.

Teaching and research at most universities are confined to the classrooms, laboratories and libraries. Rarely do professors or instructors use the campus as a teaching tool or take part in the operation or maintenance of the campus.

This is unfortunate, because if they did, they might be able to accomplish some of the wonders the faculty at MSU has achieved.

Working in conjunction with the Athletic Department and the Department of Physical Plant, the faculty of the Department of Landscape Architecture is deeply involved in campus design, construction and maintenance. Instructors involve the students in campus landscaping as a method of teaching, but the vast majority of the work

is performed by 35 technicians employed by the department. This unique arrangement, evolved over the past 12 years, has attracted students from across the nation and resulted in important advancements in sports turf and landscape technology.

The concept is being expanded to other departments within the university. This fall the university's Business School launched a new program for golf professionals. Only one other college in the country has such a curriculum. Nearly 100 students from 35 states have already enrolled.

The reason for the instant popularity of the program is credited to the way MSU put the program together. Not only did they first seek and receive the endorsement of the Professional Golf Association (PGA), they are rebuilding the school's 18-hole "pasture course" into a championship one for the students to study course operations.

The maintenance of the course, the stadium, practice fields and campus grounds, is the responsibility of Charles Scoggins, campus landscape coordinator and member of the Landscape Architecture Department. Since he joined the university in 1970, Scoggins is able to compare the results of

operating as part of the Department of Landscape Architecture to operating as an arm of the Department of Physical Plant.

"I think it boils down to admitting what you are really interested in, engineering or landscaping," Scoggins explains. "The physical plant manager sees a stadium with seats, track, parking, concessions, scoreboard and field. We see a turf surface which must be carefully designed to withstand 30 games per season, heavy rains and hot, humid summers—surrounded by a stadium. By concentrating on the areas we are most interested in, the university gets the best results."

In fact, the arrangement between the landscape staff and the physical plant department started with sports turf at MSU. For years, MSU has fielded great baseball teams. In 1985, not only did the Bulldogs under coach Ron Polk lead the nation in attendance, they finished third in the College World Series.

The team in 1971 was equally talented, but the baseball stadium turf, like much of the campus landscape at that time, was showing signs of fatigue. "Baseball coaches like to practice on the same field they play their games," says Scoggins. "It takes special knowledge of the turf and infield to keep a field in collegiate condition when all practices and games are on the same field."

Scoggins had just joined MSU's physical plant staff as a maintenance foreman after completing his bachelor's degree in turfgrass management there. "Everyone on campus shared MSU President William Giles' concern over the condition of the university's turf and landscape," Scoggins reflects. "Giles was an agronomist by training and was exploring ways to solve the school's landscape problems. His first step was to establish an office of campus landscape within the physical plant department."

The first faculty member to volunteer his expertise to the campus landscape problem was Dr. Coleman Ward in the agronomy department, one of Scoggins' professors when he was a student. With the president's support, Ward set up a meeting with the athletic director Charles Shira, Scoggins and Bob Callaway, a person who would later lead the campus landscape department from the Physical Plant Department, to the Depart-



gest Classroom

ment of Horticulture and finally to the Department of Landscape Architecture.

The meeting went well. It was agreed that the campus landscape staff, with Ward's help, would rebuild the baseball field with the campus labor force. When the job was complete, Dudy Noble Baseball Field looked better than all the other fields in the conference and held up game after game after game. The department of campus landscape had impressed everyone.

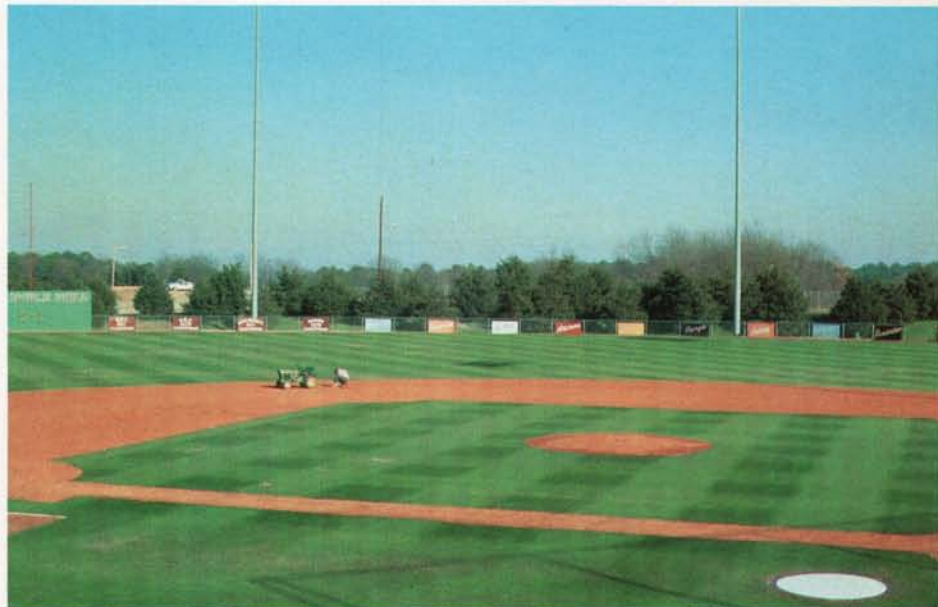
But they had impressed Shira the most. Scott Stadium, MSU's football stadium, had been constructed in the '30s. Each year it was harder to restore a solid stand of turf before the next season. Even a short rain caused puddles to form on the field and turned the common bermuda into mud. The final blow was the last home game of the '73 season. The Bulldogs suffered a defeat on their home field with water nearly up to their ankles. Shira, Ward, Callaway and Scoggins watched the game and felt as humiliated as the players, soaking wet and covered with mud, walking back to the locker room after the game.

There was little choice, the field had to be rebuilt. The most popular surface in the conference was artificial turf. As much as Shira respected his campus turf experts, his sports colleagues thought he should make a splash with artificial turf. It was up to Ward, Scoggins and Callaway to overcome this pressure and to recommend a field that would allow Shira to maintain his stature in the conference.

In retrospect, their recommendation not only made Shira and MSU leaders instead of followers, it turned out to be the greatest alternative to artificial turf in collegiate and professional sports today, the Prescription Athletic Turf (PAT) System.

At that time, no existing fields in the South were built to PAT specifications. Three PAT fields had been installed up North under the direction of agronomist/inventor Dr. William Daniel, of Purdue University in Lafayette, IN. Ward knew Daniel and understood his theories behind the PAT System.

Drainage and soil moisture are critical factors in management of natural sports turf. If the soil does not drain well, it compacts easily under traffic and will not serve as



Dudy Noble Baseball Field was the first test of the campus landscape department and paved the way for renovation of other sports turf facilities at MSU.

healthy medium for turfgrass roots. Compacted soils also rut easily and are very hard upon impact, both factors in sports injuries. If it drains too well, an excessive amount of water and fertilizer must be applied to meet the needs of the turf. But, a sports field must drain fast enough to remove an average rainfall occurring during or before a game.

Since the late '50s, Daniel had experimented with the use of sand in golf greens. To keep moisture levels under control in sand greens, golf course architects used layers of materials underneath the sand to create a "perched" condition. Daniel invented a system for greens that contained the water with a plastic barrier at the bottom of the sand layer. Daniel, after conferring with sod growers and sports turf managers about decent drainage for football and soccer fields, speculated that the same techniques used to make golf greens grow deep, healthy turf under heavy traffic, would also work for larger areas.

That meant taking specifications intended for the typical 5,000 square foot green and enlarging them to serve a 60,000 square foot field. If he succeeded, he could not only

control moisture on the field, he could remove the 18-inch crown needed to drain conventional fields. Quarterbacks could see and hit their crossfield receivers better and fans and television crews could get a better view of the game. In other words, natural turf could do everything artificial could do.

"At the time, an artificial surface would have cost more than \$400,000 and the PAT field was \$120,000," says Scoggins. "But, an artificial surface was much easier to understand than some of the aspects of a PAT field." Ward carefully explained the PAT system to the athletic director and the university administration and answered their questions. Shira and President Giles decided to stick with their own turf experts and the PAT field was approved.

A contractor from Louisville actually did the work. The first step was to remove the crown and the next 15 inches of soil. Plastic film was laid across the entire field to make it into a "large bathtub." Dividing the field in two lengthwise, two networks of perforated drainage tubing were laid flat on the plastic and fed into two main drain lines. These drain lines led into a subsurface, co-

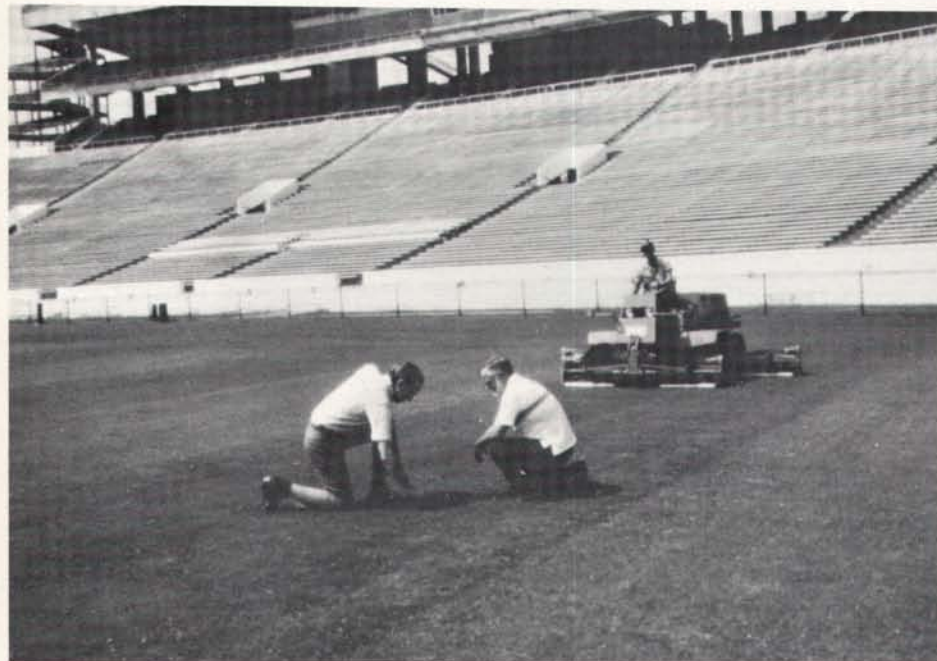
continued on page 14



Mississippi State

continued from page 13

vered concrete reservoir at one end of the field. From the reservoir, a main line was connected to a pump station off the field. Valves in the pumphouse enabled the pumps either to suck water out of the field and into a storm drain, or take water from a water main and pump it into the field. Since the field drain system was in half, pumping or suction could be applied to either side of the field.



The stadium and other athletic turf are the responsibility of (left to right) Charles Scoggins, coordinator of campus landscaping, James Thompson, athletic supervisor, and Tommy Buckelue, athletic crewleader (on mower).

The entire field was then filled with 16 inches of medium-size sand. Peat moss, perlite and vermiculite were tilled into the top six inches of sand and the field was sprigged with Tifway bermudagrass. No surface irrigation was installed since it was believed that subirrigation through the drain system would be adequate to meet all water needs.

The turf established well and was the talk of the conference during the '74 season. "MSU now had a field it could use in any weather," says Scoggins. When wet weather forced the team off the conventional practice field, they would move practice to the PAT field. The equivalent of 40 games per year are played on the field every season.

Daniel could not have asked for a better site for a southern PAT field. Both the departments of landscape architecture and agronomy were gifted with talent. The field has been a huge research plot and any weaknesses in its design have been observed and researched. The MSU staff has helped Daniel adapt the system over the past 12 years into the product it is today.

"The MSU staff has contributed greatly to the PAT system, especially for its region of the country," says Daniel. "We've taken some of the information learned at MSU and applied it to the Orange Bowl in Miami. "They have helped ease some of the concerns about sand rootzones and proven that it maintains its benefits for years."

The first adjustment MSU made was the addition of a surface irrigation system. "We felt we needed surface irrigation to get granular fertilizers into the rootzone," says

Scoggins. "We also use it to lightly moisten the sandy surface before a game or to syringe the turf in the summer to cool the field down." Surface irrigation came in handy when Scoggins noticed that sections of the field appeared to need more water than others. He was able to adjust the irrigation cycles to compensate for the problem. "We now know, thanks to MSU's help, that the original method of mixing the peat into the sand was uneven and caused some areas to hold more moisture than others," says Daniel. "But, it also told us that we added more organic material to the sand than we needed to."

In 1982, Scoggins noticed the infiltration rate of the field had dropped considerably. The original rate of 5½ inches per hour had dropped down to an inch. Suspecting the peat again, the decision was made to remove the top six inches of the field and replace it with new sand. What they found surprised them. The slits in the plastic drain lines were plugged with rust. The MSU staff studied the lines and discovered that the original sand contained a large amount of

iron. Over the years, this iron leached down to the drain lines and collected on the slits. Both drainage and subirrigation had been effected.

The plugged drains were flushed or replaced. Six inches of new sand, tested for size and iron content, were spread on the field. A reduced amount of peat was carefully and uniformly mixed with the top four inches of sand. The field was sprigged with Tifway again.

"The infiltration rate was back to five inches and has stayed there for the past four years," Scoggins points out. "The dry areas have disappeared and the system is working like the first day we turned it on."

The PAT field, completed most recently is at Findlay High School in Findlay, OH. This field reflects some of the refinements made in recent years. Instead of dividing the field into two halves lengthwise for the drainage/subirrigation system, Daniel has separated it into three sections lengthwise so the area between the hash marks can be managed separately. "Since the center section receives the most abuse," says Daniel, "we can now concentrate on its particular needs while lowering the maintenance on the outer sections."

The depth of the sand has also been decreased from 16 to 12 inches. "By cutting shallow trenches for the drainage network before laying the plastic, we have been able to eliminate a fourth of the sand," Daniel points out. "The cost of the sand usually represents half the entire materials budget for most fields. We determined we could save the customer money while preserving the effectiveness of the PAT system."

The amount of peat has been reduced and the method of mixing it with the surface sand has been changed to assure uniformity. Also, all new systems include surface and subsurface irrigation. This enables the field to be fertilized through the surface irrigation system and gives the manager more control over surface moisture content. Finally, moisture sensors are installed in the field and linked to the surface irrigation controller. The moisture data can also be used to adjust the subirrigation system.

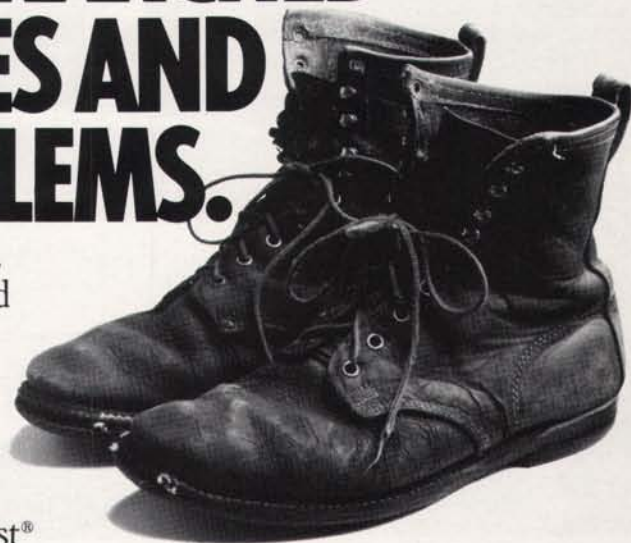
"There is no doubt the incidence of Pythium is lower on PAT fields," Daniel states. "This is a valuable aspect for all fields with cool-season turfgrasses and southern fields when overseeded with ryegrass."

While only 16 PAT fields were installed between 1970 and 1985, three were installed this year and four more are being planned for 1987. The acceptance of the PAT system as the standard for sand-based athletic fields in the U.S. is largely due to the feedback from the managers of existing installations and the university-based principles used to design it.

"Maintenance of the field at Scott Stadium is not significantly different than main-

continued on page 16

BEFORE WE DEVELOPED THESE PROBLEM-SOLVING TURFGRASS MIXTURES, WE MARCHED THROUGH ACRES AND ACRES OF PROBLEMS.



Nobody knows the troubles we've seen.

Our Northrup King turf specialists and researchers have hoofed through salt problems, soil compaction, disease, starved turf, baked turf, clefted-to-shreds turf, and dormant winter turf—all depressing sights. But it was a road well worth our travels.

The result is a complete line of Medalist® turfgrass formulas that meet the demands of the professional turf manager.

If you've been staring down at a turf problem, look up your solution here. And if you think it's a turf problem we haven't seen, just let us know.

Our business is putting your problems behind us.



MEDALIST TURF PRODUCT	MAJOR AREAS OF USE	SPECIAL FEATURES
Athletic Pro and Athletic Pro II	For athletic turf.	Well suited for new seeding or overseeding. Fast establishing, traffic tolerant, rapid recovery. Both provide good footing.
Boulevard Mix	Any area with high pH (roadsides, sidewalks, boulevards, alkaline soils, etc.).	Contains 'Fults' and Dawson red fescue for beautiful salt-tolerant turf. Performs at low to high fertility levels.
Landscape Pro Mix	School grounds, cemeteries, golf course roughs, home lawns.	Establishes fast. Adapts to broad range of conditions and management levels. Low to moderate fertility needs.
Overseeder II Mix	Fairways, tees, athletic fields.	Rapid germination and establishment. Withstands heavy traffic and resists diseases. Penetrates compacted soils.
Medalist North Mix	Fairways, tees, cart paths, wear areas.	Quality turf for high traffic areas. Clean mowing and disease resistant.
Premium Sod Blend	Commercial sod production.	Exceptional dark green color. Tolerates light shade. Superior disease resistance. Rapid sod producer.
Renovator Pro Mix	Problem solver for heavy traffic areas (athletic fields, golf tees, and fairways).	Penetrates compacted soils and combats <i>Poa annua</i> . Adaptable to most geographic regions.
Medalist Brand Overseeding Products	Winter overseeding of dormant bermudagrass.	Establishes rapidly and evenly. Tolerates traffic while providing a superior putting surface. Smooth spring transition.

*Ask your Northrup King distributor about Medalist Turf Products to solve your turf problems.
Or write Northrup King Medalist Turf Products, P.O. Box 959, Minneapolis, MN 55440.*



Fifteen inches of sand were spread over the plastic moisture barrier and network of perforated drainage pipe.

Mississippi State *continued from page 14*

taining our other fields," says Scoggins. "Our campus landscape crew takes care of mowing and fertilizing. Once a year we verticut, aerify and topdress with sand. We've discovered that the water level in the reservoir is not as critical as we first thought. As long as it's within a range the root depth is excellent.

"It is clear that we need to use surface irrigation much less on Scott field than we need to for our conventional fields. We also use the pumps frequently to suction off excess moisture from rains falling during or before games. It takes a tornado to stop a game now."

Surprisingly, Scott field is not usually overseeded for the football season. This month, however, Scott Field will be one of the stars of a nationally televised game. "To make the field sparkle for television viewers, the Mississippi Federation of Cooperatives donated Palmer perennial ryegrass to overseed the field," says Scoggins.

But, the dressing up of the stadium doesn't end there. Campus landscape architect Sam Hogue has added a berm at the end of the field that will be planted with shrubs and

continued on page 18

Olathe

SCARIFIERS ATHLETIC FIELD CONDITIONER

Breaks up the crust then drags the dirt smooth — **REDUCES PLAYER INJURIES!**



SELF CONTAINED UNIT: Scarifier & Sprayer mounted on the Olathe Turf truck. A complete ATHLETIC FIELD MACHINE!



MODEL 72 Mounts on the 48 SWEEPER with truck bed.



MODEL 73 easily mounts to CATEGORY 1 HITCH TRACTORS

OLATHE MANUFACTURING, INC. 800-255-6438
100 INDUSTRIAL PARKWAY, INDUSTRIAL AIRPORT, KS 66031 913-782-4396

Great sprinkler. Great new price.



Now, when you buy Toro's new 610 Series gear-driven, below-grade sprinkler, you'll save \$10. When you add that to the 610's superior safety and vandal-resistant features, you'll see why sportsfields, parks and other public installations can't afford to be without it.

For more information, contact your local Toro dealer, or Toro directly at 5825 Jasmine St., Riverside, CA 92504. (714) 688-9221.

\$39.95
Sugg. list price

TORO



How to stay below grade and under budget.

Introducing Toro's new 610 Series gear-driven rotary sprinkler, the ideal choice for sportsfields, parks and other public installations. With a 45' to 58' watering radius, it offers many of the same highly attractive features as our top-of-the-line 640—at a much more attractive price.

Safety and vandal-resistance. A strong combination.

Like our 640, the 610 is one of the safest sprinklers around. It can be installed up to 1/2" below grade, and has a surface diameter of only 2-3/8". Which greatly reduces the chance of tripping or injury.

It's also extremely vandal-resistant. Thanks to a thick, sturdy one-piece housing that surrounds all parts from the nozzle to the gear box. It's tough enough to withstand a direct kick to the nozzle while the sprinkler is operating. And a powerful, stainless steel retraction spring assures positive non-down and resists prying up

More high performance features.

The 610 features Toro's proven gear-driven design. So you can count on smooth, quiet operation. Plus, its powerful brass and plastic gears provide added strength to withstand high pressure surges.



We've designed the 610 with a new seal for better performance. It seals tightly against a non-rotating surface. Requires less flush to keep out debris. And helps eliminate stick-up problems in virtually every soil condition.

The 610 has got even more extras

including a full 4" pop-up to clear tall grasses. A standard check valve that prevents puddling. And a 25% reducible watering radius for greater flexibility in design and installation.

So when you need a reliable, affordable below-grade sprinkler head for medium to large turf areas, don't settle for anything less than the Toro 610. It offers top-of-the-line performance that fits your bottom line.

For more information, contact your local Toro dealer, or Toro at 5825 Jasmine St., Riverside, CA 92504. (714) 688-9221.



Excellence in Irrigation™



Mississippi State

continued from page 16

annuals. The colorful berm will be balanced on the other end of the field by rows of southern magnolias. The Bulldog logo will be displayed on a cantilever roof which conceals the pumphouse. "These kinds of touches simply would not be considered by most physical plant directors," says Hogue.

"It's ironic that some of the schools encouraging MSU to install artificial turf in 1974, are now asking lots of questions about our PAT field," says Scoggins. "It's too bad Shira is not alive to see the switch."

The sports field responsibility of the campus landscape department was expanded even further in 1980 when it designed and installed a four-field practice area for football. The fields are conventional with 18-inch crowns. They are also aerified and maintained to a level as close to Scott Field as practical. The design work for the practice complex was also done by Hogue. "I don't hesitate to call specialists when faced with a design problem," says Hogue. "Usually, all I have to do is call someone on campus. In the case of the golf course, we contacted a golf course architect at the very beginning of planning."

Until recently Hogue both taught and did

"Some of the schools encouraging MSU to install artificial turf in 1974, are now asking questions about our PAT field."

campus design. The volume of design work reached a point where he was forced to give up teaching. "We are working on improvements to Scott Stadium, a new baseball stadium, the golf course, and many projects on campus," says Hogue. "It's important that we continue the landscape themes we've established in the past ten years. Charlie Scoggins and I make a good team and MSU supports us all the way. It's important to continue the tradition so many MSU faculty worked to establish."

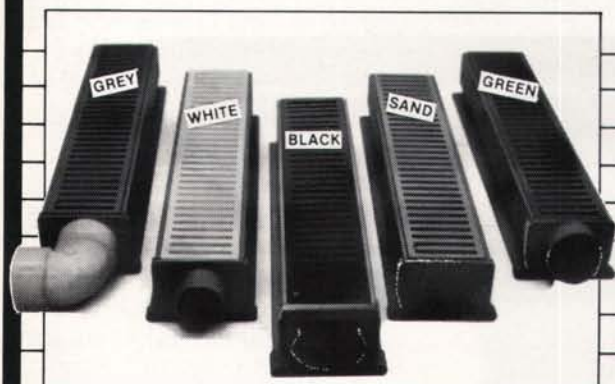
Bob Callaway, another person that played

a major role in campus landscaping during the past 15 years, recently left the university. As campus landscape coordinator and assistant professor of landscape contracting, Callaway was instrumental in moving the campus landscape department from the physical plant department to the Department of Landscape Architecture. He also gained support for and set up a landscape management curriculum at MSU. Graduates of his program never lacked a job when they graduated.

Callaway labored for three years to establish the new golf professional program. He contacted the PGA and negotiated with them to set up a program that fit their needs. Soon MSU will be able to supply golf professionals from its PGA program in addition to golf course superintendents it already trains in its turf management program.

"For 15 years Bob Callaway did not let anyone forget the importance of landscape design and maintenance on this campus," says Scoggins. "As his assistant, it was my job to take his ideas and apply them to campus maintenance." The result is a one-of-a-kind arrangement for campus landscape management, many awards, and a faculty involvement rarely found on other university campuses. ●

WHO SAYS... DRAINAGE HAS TO BE UGLY!



NEW! NDS SPEE•D• CHANNEL DRAIN

- 5 Colors • Easy Installation • Light Weight
- Affordable • Tank Tuff

HIGH TECH PLASTIC HAS FINALLY COME TO THE DRAINAGE INDUSTRY!!



ITS USE IS ONLY LIMITED TO
YOUR IMAGINATION

NATIONAL DIVERSIFIED SALES, INC.

2550 AZURITE CIRCLE, NEWBURY PARK, CA 91320
(818) 991-5000 OR (805) 498-3656
TOLL FREE (EXCEPT CALIF.) (800) 235-3533
CALIF. WATTS (800) 233-2509



TERRA—THE VERSATILE ONE

D
U
R
A
B
L
E

F
A
S
T



LOW MAINTENANCE

- Stadiums
- Soccer Fields
- Baseball Fields
- Playgrounds
- Polo Fields
- Parks
- Greens
- Fairways
- Tees
- Lawns
- Fringes

ANY TURF AREA — LARGE OR SMALL

CONTACT YOUR TERRA DISTRIBUTOR OR:

Terracare Products Co., Inc.

P.O. BOX 506, PARDEEVILLE, WI 53954

(608) 429-3402

DEERE UNVEILS FULL LINE OF GOLF AND TURF PRODUCTS

John Deere, Moline, IL, a leader in the agricultural equipment business, is going to try to become a leader in the golf course equipment business. The company recently unveiled 12 new products for more than 150 current distributors interested in selling golf course equipment.

Gary Gottschalk, manager of golf and turf products for Deere, has spent the last two years quietly preparing a full line of reel mowers, aerifiers, utility vehicles and sprayers: "We have begun to put in place a significant new distributor organization that will provide golf course superintendents and sports turf managers with quality products, fast parts replacement and the kind of eager-to-please service that has traditionally been the strength of the John Deere organization."

The company has more than 1,500 farm equipment, industrial tractor and commercial/institutional dealers across the country. Gottschalk said the new golf and turf products will be sold through a special distributor network primarily comprised of established Deere dealers.

Deere's existing rotary mowers and compact utility tractors will also be sold by the new distributor network. Shipments of new golf and turf products will begin in early 1987, said Gottschalk. The products displayed recently include a walk-behind greensmower, three- and five-gang hydraulic reel mowers, 20- and 24-hp diesel turf mowers, a



More than 150 potential golf and sports turf equipment distributors recently reviewed the line of equipment Deere has been putting together for more than two years.

boom mower, one pull-type aerifier, four three-point-hitch aerifiers and a utility vehicle with sprayer, spreader and utility bed attachments.

"The golf and turf equipment distributors will have access to the same programs that

support the sales of farm tractors, combines or commercial and industrial equipment," Gottschalk adds. These include 24-hour parts service, factory technical assistance, service schools, leasing programs and financing programs.

SUBMATIC DRIPLINE

SUB-SURFACE DRIP IRRIGATION HOSE



Sub-surface irrigation may be the ultimate answer for maintaining turf areas where cost and availability of water is a factor.

Dealer inquiries invited.

Submatic announces a new sub-surface irrigation system that is proving to be the most efficient, economical and easy-to-install system on the market. The Dripline emitter is a labyrinth-type, self-cleaning turbulent flow dripper with a built-in strainer. It is made of the same polyethylene as the Dripline which is tough, lightweight and very flexible. The emitter is enclosed and inseparably welded to the inside wall of the tubing as it is extruded—resulting in a one-piece, jointless, emitter-enclosed Dripline. The emitters can't be dislodged or separated due to water pressure or handling.

SUBMATIC

P.O. BOX 246 • LUBBOCK, TX 79408

TOLL-FREE: 1-800-858-4016

IN TEXAS: 1-800-692-4100

SUBMATIC OF AUSTIN

3916 WOODBURY AVE.
AUSTIN, TX 78704

512-440-7744

SUBMATIC OF CALIFORNIA

3511 LEMON GROVE AVE.
LEMON GROVE, CA 92045

619-464-6602

SUBMATIC OF CANADA

7620 WOODBINE AVE.
MARKHAM, ONTARIO L3R 2A2

416-475-3270



Referee Randy Eckley called the action as the Clinton Cowboys and the Clinton Bandits played the first game at the new soccer park. Photos courtesy of the Clinton Daily News.

Oklahoma Town Rallies Around New Soccer Park

Soccer is the world's most popular sport—except in the United States. Although youth soccer is very big in this country, most Americans leave it behind with their childhood when they grow up.

Bearing that in mind, it's a small miracle that the 10,000 residents of Clinton, OK, buffeted by one of the worst oil-price depressions in memory, still cared enough about the sport to build a soccer park with seven playing fields for their youngsters.

In doing so, they proved that improved sports fields need not be limited to big park districts, wealthy cities, private schools or professional sports. They can be built wherever the people involved care enough to fight for them.

Clinton is a small oil town located in the dry, western Oklahoma plains, 80 miles southwest of Oklahoma City. The residents of Clinton live with the understanding that water is a limited commodity and should not be wasted. They also live for sports and back their teams to the hilt. Recently they found a way to provide their kids with a new seven-field soccer park and conserve water too.

Soccer in Oklahoma? That's right. Nearly 300 children from the ages of four to fourteen jump into their soccer shorts and cleats every autumn and spring in Clinton to play the most popular sport in the world. That's a lot of kids for a city that doesn't have a varsity soccer team at either the junior high

or high school level. Furthermore, another 80 children join the Clinton Soccer Club each year.

Clinton competes against 27 other soccer clubs in the Great Plains District of the Oklahoma Soccer Association, a member of the United States Youth Soccer Association. While most of the other clubs in the district have suffered from the recent depression in the oil industry, Clinton's program is growing, due largely to its new soccer park.

"Clinton has been known as a football town," says assistant city manager Robert Johnson. "We've sent more than our share of teams to the state finals. The soccer club

continued on page 22