



CSFM program nearly eclipses record

In 2013, the STMA Certified Sports Field Managers (CSFM) Program added 19 members to its rolls. This is the second highest number of members certified in one year. In 2010, there were 22 members who attained this designation, which is the highest in the program's history. The CSFM program began in 2000, and it currently has 169 certified members.

The program was established to validate the experience and qualifications of a sports turf manager. Those seeking certification must attain 40 points before being able to take the exam. Points are gained through a combination of formal education and work experience. The four-part exam covers agronomics, sports specific management, pest management and administration. Those testing may elect to take the test at the annual STMA conference or at a location and time convenient to them by using a proctor. Continuing education and service to the industry are also required to maintain the CSFM designation.

Consider adding value to your employer and to your personal marketability by becoming certified. CSFMs also are paid more. On average, a CSFM makes \$7,500 annually more than a non-certified member.

To find out more about the certification program and what it can do for you, go to www.STMA.org, and click on Certification under the Professionalism Tab.

Congratulations to the Class of 2013!

- Weston Appelfeller, CSFM**, Columbus Crew
- James Bergdoll, CSFM**, City of Elizabethtown
- Jeff Bosworth, CSFM**, Drake University
- Noel Brusius, CSFM**, Waukegan Park District
- Jason Demink, CSFM**, University of Michigan Athletic Department
- Michael Flowers, CSFM**, Championship Turf Services
- James Gish, CSFM**, Brigham Young University
- Shane Hohlbein, CSFM**, Precision Turf LLC
- Chris Hohnstrater, CSFM**, The Principia School
- Michael Hrivnak, CSFM**, Town of Cary
- David Iannicello, CSFM**, Sodexo Campus Services at Hobart & William Smith College
- Shane Johnson, CSFM**, City of Clinton Parks & Rec
- Ryan McCaughey, CSFM**, The Pennsylvania State University
- Kevin Mercer, CSFM**, Vassar College
- Allen Reed, CSFM**, FC Dallas
- Kyle Slaton, CSFM**, Georgia State University
- Robert Standing, CSFM**, Carolina Green Corp.
- Brett Tanner, CSFM**, DePauw University
- Scott Thompson, CSFM**, Duke University

Continued from page 7

I will leave you with this story about a group of people who made a difference. I am fortunate to work in Lexington, where more than 200 years ago an unlikely collection of farmers, shopkeepers and tradesmen decided to make a difference and take a stand. Little did they know that it would lead to independence and a new country. Although what we do is not on the same scale, we do make a difference in the lives of the people using our facilities. By providing well-maintained, safe, aesthetically pleasing athletic fields we show our commitment for the betterment of others.

Let's work together to make a difference in the sports turf industry and make 2014 a great year. ■

SI
SPECIALTY INFORMATION SYSTEMS

Maximize your positive press from your feature in
SportsTurf

Reprints
Maximize the marketing power of your feature.

Eprint
Give your feature a presence on the World Wide Web.

Custom Plaques
Showcase your great press in a public area for all to admire.

For custom reprints contact us today!
Call 678-292-6054 or email us at cnaughton@specialtyim.com

Now offering short-run reprints!
Order 100 copies or less.

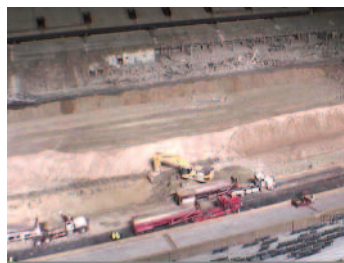
Goertz at Texas A&M sells Kyle Field turf



▲ **At left** is Leo Goertz, Texas A&M's athletic fields maintenance manager, being interviewed about selling the old turf from Kyle Field.



▲ **Above Left:** Venerable Kyle Field is being enlarged to accommodate more than 102,000 "12th men" on football Saturdays. The renovation plans include dropping the playing surface 8 feet and pushing it south 16 feet to add more seats. **Above Right:** Goertz & Company decided on 110 pallets at \$400 each plus 1,000 blocks at \$20 apiece, all the while wondering how much demand there really might be.



▲ **Above Left:** Almost hurts to look at the field during renovation process! **Above Right:** One Aggies fan bought enough turf to surround his house; the white marks are left over hash mark paint.



STMA Affiliated Chapters Contact Information

Sports Turf Managers Association of Arizona: www.azstma.org

Colorado Sports Turf Managers Association: www.cstma.org

Florida #1 Chapter (South): 305-235-5101 (Bruce Bates) or Tom Curran CTomSell@aol.com

Florida #2 Chapter (North): 850-580-4026, John Mascaro, john@turf-tec.com

Florida #3 Chapter (Central): 407-518-2347, Scott Grace, scott@sundome.org

Gateway Chapter Sports Turf Managers Association: www.gatewaystma.org

Georgia Sports Turf Managers Association: www.gstma.org

Greater L.A. Basin Chapter of the Sports Turf Managers Association: www.stmalabasin.com

Illinois Chapter STMA: www.ILSTMA.org

Intermountain Chapter of the Sports Turf Managers Association: <http://imstma.blogspot.com/>

Indiana - FORMING - Contact Clayton Dame, Claytondame@hotmail.com or Brian Bornino, bornino@purdue.edu or Contact Joey Stevenson, jstevenson@indyindians.com

Iowa Sports Turf Managers Association: www.iowaturfgrass.org

Kentucky Sports Turf Managers Association: www.kystma.org

Keystone Athletic Field Managers Org. (KAFMO/STMA): www.kafmo.org

Michigan Sports Turf Managers Association (MiSTMA): www.mistma.org

Minnesota Park and Sports Turf Managers Association: www.mpstma.org

MO-KAN Sports Turf Managers Association: www.mokanstma.com

Nebraska Sports Turf Managers Association: sphillips4@unlnotes.unl.edu

New England STMA (NESTMA): www.nestma.org

Sports Field Managers Association of New Jersey: www.sfmnj.org

Sports Turf Managers of New York: www.stmony.org

North Carolina Chapter of STMA: www.ncsportsturf.org

Northern California STMA: www.norcalstma.org

Ohio Sports Turf Managers Association (OSTMA): www.ostma.org

Oklahoma Chapter STMA: 405-744-5729; Contact: Dr. Justin Moss okstma@gmail.com

Oregon STMA Chapter: www.oregonsportsturfmanagers.org oregonstma@gmail.com

Ozarks STMA: www.ozarksstma.org

Pacific Northwest Sports Turf Managers Association: www.pnwstma.org

Southern California Chapter: www.socalstma.com

South Carolina Chapter of STMA: www.sc-stma.org

Tennessee Valley Sports Turf Managers Association (TVSTMA): www.tvstma.com

Texas Sports Turf Managers Association: www.txstma.org

Virginia Sports Turf Managers Association: www.vstma.org

Wisconsin Sports Turf Managers Association: www.wstma.org

Chapter Sponsors

