

# JOHN MASCARO'S PHOTO QUIZ

John Mascaro is President of Turf-Tec International

Can you identify this sports turf problem?

- Problem:** Weak turf on field
- Turfgrass area:** Fast pitch softball field
- Location:** Fargo, North Dakota
- Grass Variety:** Bluegrass

**Answer to John Mascaro's Photo Quiz on Page 33**



# FASTEST SPORTS TURF DRAINAGE IN THE INDUSTRY!



- **High Compressive Strength**  
11,000 PSI
- **High flow rates**  
60% more available open space



“There isn't a single day where I don't have players coming up to me to remark about how great it is to play on this field now that we have Hydroway installed. But actually, we don't have that age problem anymore. We can get back on the field in under 15 min, and the Hydroway System saved us considerably when compared to the other available options.”



John Mascaro  
Turf-Tec International

**Hydraway**  
Drainage Systems

800-223-7015 | [hydraway.net](http://hydraway.net)

# JOHN MASCARO'S PHOTO QUIZ

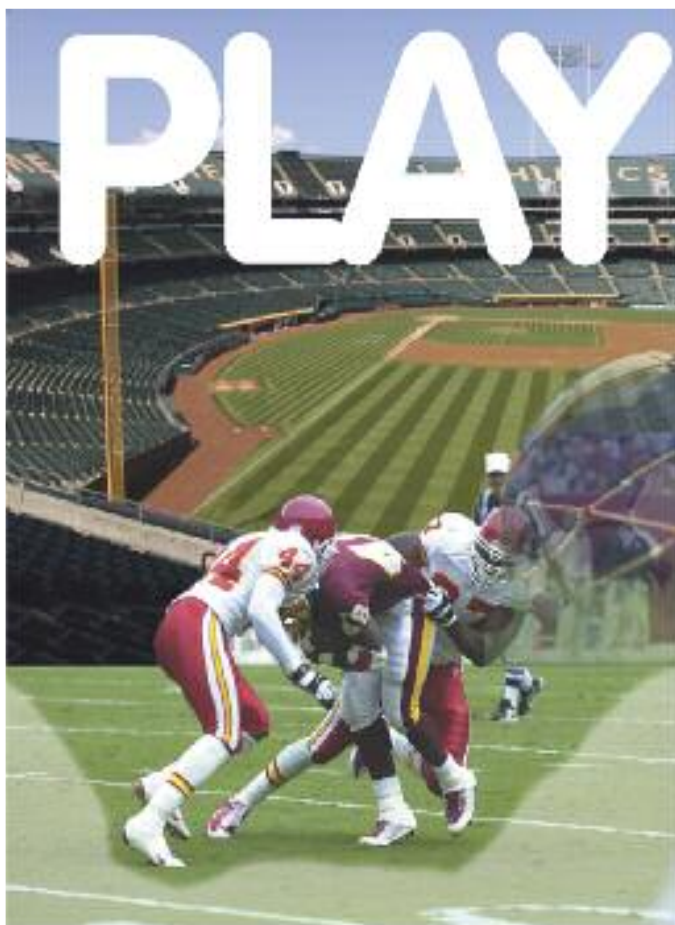
## Answers from page 17

**ALTHOUGH WEAK TURF** on softball fields can be caused by a variety of things, this weak turf is a result of too much silt in the soil. This seven-field fast pitch softball facility in North Dakota was built on a former lake bed in the famed Red River Valley and the park has dealt with flooding for many years now. This past spring as the winter snows melted, the river crested above flood stage, leaving about 14 feet of water on these fields and they remained underwater for about 2 weeks. The length of time the fields remain under water is directly proportional to the amount of silt that is left on the soil surface when the waters recede. Some years it is 1 inch or less and can be easily broken up. In 2009, the river was on the fields for almost a month and left 4 inches of silt behind. The parks department had to use skid steers to push the silt up and haul it away. This year about an inch of silt was deposited by the flood waters and they were able to break it up and re-seed into the soil with ryegrass to get a quick cover. This fall they will be interseeding the rye with bluegrass. After the facility was cleaned up, it was re-opened on July 8; the evening of July 9, they received 6 inches of rain and the storm drains filled this facility again with about 3 feet of water and it was underwater again for 5 days. They re-opened again on July 25. The city will start a levee project this fall which will protect four of the fields; the other three will be taken out of play as they are in an area that the new levee cannot protect. Next spring after the levee project, they are planning a major overhaul of the fields. ■

*Photo submitted by Rene' Smith, Athletic Field Coordinator for the Fargo Park District.*



If you would like to submit a photograph for John Mascaro's Photo Quiz please send it to John Mascaro, 1471 Capital Circle NW, Ste # 13, Tallahassee, FL 32303 call (850) 580-4026 or email to [john@turf-tec.com](mailto:john@turf-tec.com). If your photograph is selected, you will receive full credit. All photos submitted will become property of *SportsTurf* magazine and the Sports Turf Managers Association.



# BALL!

## FOOTBALL, BASEBALL, SOFTBALL, SOCCER

Any sport played on natural grass is a natural for TifSport Bermudagrass. If you're looking for a sports turf that can handle non-stop action, a transition zone climate and heavy overseeding, TifSport's your answer. It's ideal for intramural fields, practice fields and game-day venues, where everything has to be perfect.

Coaches and players love the way it looks and plays and you and your crew will appreciate how easy it is to manage. TifSport can only be sold as certified sod or sprigs and only by licensed members of the TifSport Growers Association. For more information visit us at [www.tifSPORT.com](http://www.tifSPORT.com), or call 706 552-4525.

**TIFSPORT**   
CERTIFIED BERMUDAGRASS  
[www.tifSPORT.com](http://www.tifSPORT.com)