

REV new humic compound from Dakota

REV PTF6000, from Dakota, is an all-natural, organic humic compound that dramatically improves plant health while increasing the longevity of fertilizer and fungicide performance. REV assists in disease suppression and enhanced soil biology as well. REV easily tank mixes with most products and can be used in conjunction with granular applications for longer lasting results. REV has been proven to decrease turf operating costs by 30% or more. REV uses the world's highest quality all natural materials and compounds in its formulations.

Dakota



Sweeper cuts maintenance time on synthetics

The 3-three-wheel Broce Turf Boss sweeper can groom a typical turf field in a single pass, with full 8' brush contact, reducing field maintenance time by up to two-thirds. Its reversible brush rotation, included as standard equipment, can double productivity by allowing the operator to sweep in both directions without turning around. Turf Boss sweeper's hydraulics are engineered to deliver more power to the brush, which enables full brush-turf contact for faster field maintenance. To combat overheating issues on turf fields, its radiator is designed to operate in 140°F ambient temperatures. It is the only sweeper of its kind to incorporate a hydraulic oil cooler as standard equipment. Comes standard with turf-specific 12-inch wide tires that tread lightly on turf.

Broce Manufacturing Co.



Self-priming centrifugal pumps

Griswold Pump Company says that its H Series high head self-priming centrifugal pumps have been designed with key features and options that make them ideally suited for a wide variety of water applications, including turf irrigation where greater flows and higher heads are needed. Unlike standard end suction centrifugal pumps, the H Series is able to maintain its prime even when check valves or foot valves have failed. Since the suction line on the H Series is located higher on the pump housing than conventional centrifugal pumps, it keeps the impeller and mechanical seal covered with water at all times eliminating the need to re-prime the pump and protects the seal from running dry resulting in costly replacements.

Griswold Pump Company



Katana herbicide Early Order and Bundle Bonus program

Professional sports turf managers can get a head start on next year's maintenance plans while conserving valuable budgets with an early order incentive and product bundle bonus program, available from PBI-Gordon Corporation, for its Katana Turf Herbicide. The program includes different opportunities to save: Katana Incentive, with a minimum purchase of eight bottles or two cases of Katana, you can receive a \$100-per-case rebate. Katana is packaged with four 3-ounce bottles per case (receive \$100 per case with each additional case after minimum is met). Also Bundle Bonus Rebate, add 10 gallons of SpeedZone and/or SpeedZone Southern to each case of Katana ordered and earn an additional \$2.50 per gallon rebate on the SpeedZone products. Early delivery bonus also available.

PBI Gordon



Bayer CropScience introduces Specticle plus Fertilizer

Environmental Science, a division of Bayer CropScience LP, has launched Specticle plus Fertilizer, an herbicide that provides warm-season turf managers up to 8 months of residual control at low use rates. The characteristics of Specticle deliver excellent weed prevention and fertility. Specticle plus Fertilizer is available in two different concentrations and a variety of fertilizer blends to provide for increased flexibility that meets the needs of warm-season turfgrass professionals. Specticle is a unique class of chemistry that offers an environmentally responsible solution and helps address weed resistance. Specticle plus Fertilizer delivers extended residual pre-emergent control of more than 75 broadleaf and grassy weeds, including annual bluegrass, goosegrass, crabgrass and annual sedge. The easy-to-use Specticle plus Fertilizer helps streamline turf management practices and simplify application.

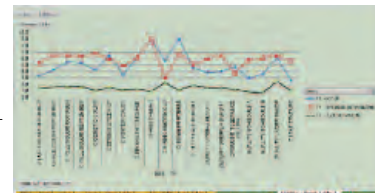
Bayer



Tool to aid in seed variety choice

WinField is committed to providing turf managers with the tools they need to stay at the top of their game. Case in point: its proprietary new Turf Tech Tool that helps efficiently choose the best seed varieties for your sites. The Turf Tech Tool, part of the WinFieldInsights Tech Kit, combines data from the National Turfgrass Evaluation program into one convenient database that makes the seed selection process easier. This industry-exclusive tool allows users to quickly pinpoint the best turf seed for their specific conditions. Features university evaluations of six turf species and more than 1,000 turf varieties. Allows users to compare varieties based on 150 attributes. Includes charting and sorting capabilities to evaluate varieties on national, regional and state levels. Quickly matches the optimum turf seed to specific environmental and playing conditions.

WinField



Get rid of geese

Canada Goose deterrent company Away With Geese has a new product: the Sports Cage. The Sports Cage protects the Sports Unit, a unit designed to avert theft in public spaces, from vandalism. The two together get rid of Canada Geese from any public area, while also averting theft and vandalism of the unit. All Away With Geese products feature a solar-powered light that is scarcely noticeable to humans but is very disruptive to the sleep of the geese, causing them to find another habitat after just a few restless nights. Like all Away With Geese units, they are maintenance free; once placed and secured, they require no upkeep and are guaranteed to rid the area of Canada Geese.

Away With Geese



New spreader/sprayer with electric features

TurfEx introduces the RS7200E spreader/sprayer with advanced features to maximize the efficiency of lawn care professionals. The new unit boasts an electric start, adjustable electric spray pump, and a hand-held spray wand. The RS7200E is driven by a 7-horsepower Subaru EX210 engine with electric start and a 0.95-gallon fuel tank. Its heavy-duty transmission has two forward gears, neutral and reverse. A hand-operated transmission disc brake and foot-controlled sulky band brake allow smooth, confident operation of the unit, and the machine's low center of gravity further increases the safety of the RS7200E. A 17-gallon tank system has a single port for easy filling and a balanced design for enhanced stability. To apply the liquid, the RS7200E includes a front-mounted boomless nozzle, which can spray between 3 and 11 feet wide, as well as a professional-duty spray wand.

TurfEx

