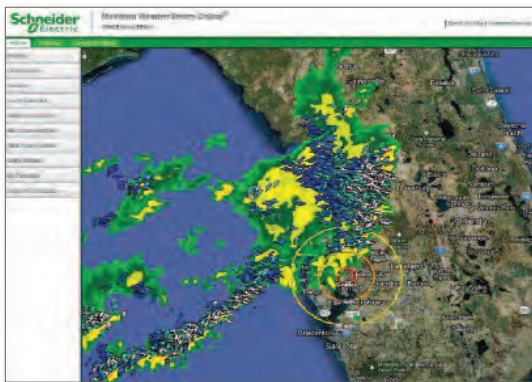


# Latest storm warning product update

**Editor's note:** The information presented here was supplied by Lauren Manix from Tunheim Partners for Schneider Electric.

**T**HE NORTHWEST INDEPENDENT SCHOOL DISTRICT (ISD) is located in the northwest corner of the Dallas-Fort Worth metroplex. The district has 14,000 elementary, middle school and high school students, with total enrollment expected to double by 2030. There are two high schools, Northwest and Byron Nelson. Northwest High School has more than 3,200 students and more than 1,200 of them are involved in outdoor activities.



Like most Texas high schools, Northwest High School's primary weather challenges are lightning, severe storms, tornadoes and high winds. Northwest ISD includes the two high school campuses and a shared stadium located approximately 1 mile from Northwest High School. The district needed a solution that would provide critical alerts and weather information for all locations.

Northwest ISD has 10 user licenses to Schneider Electric's MxVision WeatherSentry Online Turf Edition professional package. The system provides access both online and via mobile device, and includes Alert Manager, Lightning Manager, MxVision Weather Information Notification System (WINS), and the ability to ask weather questions to an experienced meteorologist any time of the day or night.

Alert Manager notifies the team of significant weather changes within their chosen coverage area. This customizable tool can also sound alarms for changes to weather conditions like wind speed, or when the National Weather Service issues a watch, warning or advisory.

Lightning Manager gives advance warning to dangerous weather conditions by using real-time lightning data rather than predictions that can lead to false alarms or delayed reporting after lightning has struck.

MxVision WINS delivers instant, personalized weather alerts on any email compatible cell phone,

PDA, pager or PC. It constantly monitors user-specified weather parameters at chosen locations, allowing turf managers to focus on other duties.

"A week after subscribing to the product, I received a text alert for lightning in our area," said Scott Fletcher, Northwest High School's head athletic trainer. The school receives a watch alert when lightning is detected within 30 miles, and a warning when lightning is within 10 miles.

School policy dictates students must be moved indoors when lightning is detected within 10 miles. "At this time, not only did we move the freshman football team to our indoor practice facility, but we moved the band indoors as well," Fletcher continued. "Less than 5 minutes after we had everyone inside and safe, our band director witnessed a lightning bolt hit the parking lot where the band was practicing. In light of this event, we already consider the system as having paid for itself, as it prevented injury to our 150 band members."

In addition to the watch and warning lightning alerts, the school receives an all-clear alert, letting them know when it is safe for student athletes to return to the field. District policy states they must wait until 30 minutes after the last lightning strike detected within 10 miles, before returning outdoors.

They also have alerts set for precipitation and high winds. "Our coaches like to know what's coming," Fletcher stated. "When rain is expected, they may put away their good equipment, or move practice indoors all together."

The district is currently working on a heat policy. Fletcher said when it is established he will set an alert for heat indexes as well.

The location-based alerts and forecasts enable the district to monitor up to six locations at a time. "We looked at the other systems out there, but would have had to purchase a different system for each campus," Fletcher said. "With this system we can monitor all locations, plus we can change locations when on the road, and get alerts for away games."

Exclusive to Schneider Electric's product is the online consulting tool, which is available 24/7. This allows you to type in a weather question and receive an answer from a Schneider Electric meteorologist within 15 minutes. "We use the consulting quite a bit — typically asking whether or not we can practice that afternoon," said Fletcher. "It's nice to get a professional's opinion, and to have them verify what we're seeing. They get back to us quickly." ■

## Q&A

**Q: What infrastructure and technology must be in place to install and use the package?**

**A:** No existing infrastructure is necessary. MxVision WeatherSentry Online is a web-based solution that can easily be accessed anywhere—at the office, on the field, or at home. The solution is accessible on PCs, tablets and mobile devices for ease of access across platforms. Map and radar views can be customized in a full-screen interactive mode to monitor severe weather on one interface.

**Q: Is a public warning system part of the package?**

**A:** No.

**Q: Do you pay more for alerts on different weather events or is it all-inclusive?**

Alerting is all-inclusive with our Platinum and Professional packages. Schneider Electric offers patented, location-based alerts on the conditions of most importance to the client. Common conditions customers set alerts for include lightning, wind speed, temperature, wet bulb globe temperature for heat stress and more. Alerts can be set up for geographically specific areas or a radius around an area, and customers can choose to be alerted both to those conditions as well as all-clear alerts. Once setup, the customer will receive the alerts on both their PC and mobile device, plus they can have these same alerts sent to more than one member of their staff.

**Q: How does the consulting feature work, and is that an extra cost?**

**A:** Online consulting is a standard feature in our Platinum and Professional packages. From the product, the client simply types in their question, and receives an answer within minutes from one of our experienced meteorologists. Users can even ask and receive questions from their mobile devices. Questions and corresponding answers are also posted from others in your same region/industry. Questions are answered. ■

## New Graco ProStencil

Graco's ProStencil is the industry's first battery-powered, high-pressure airless handheld paint sprayer. This sprayer works great for small logos, stencils (i.e. pink breast cancer ribbon), or spraying unique colors in large logos. The AZ Cardinals use this tool exclusively to spray the yellow beak in the cardinal logo. Simply add undiluted field marking paint to the 32 oz. cup and spray. Clean-up and color changes are simple, and there is no hose to contend with. You can even use this sprayer to touch-up goal posts, storage buildings, or to spot treat weeds with water-based herbicide/weed killers. ProStencil comes complete with two 20V lithium-ion power pack batteries, battery charger, 24" spray extension, 32oz cup with cover, and a storage case. Add the ProPack portable spray pack accessory for additional spraying capacity.

**Graco**

## Turfco's T3000i spreader sprayer with 3-in-1 auxiliary tank

Turfco's T3000i spreader sprayer coupled with the optional 3-in-1 Auxiliary Tank provides maximum productivity and ease of use. With hands-free speed control the patent-pending T3000i is made even more productive with the tank's additional spray capacity. The versatile T3000i spreader sprayer is small enough to fit through a 36-inch gate, yet productive enough for large commercial properties, resulting in easier route management and increased efficiency. Features include an innovative hands-free speed control system, trim-speed lock and a longer-lasting pump. A new optional 175-pound hopper is also available, enabling the spreader sprayer to cover a larger area more quickly and enhancing run time. The patent-pending hands-free speed control system gives the operator unprecedented command. A speed-control pedal allows the operator to keep one hand free at all times to run the sprayer spreader.

**Turfco**

## Shielded sprayer from Grasshopper

Apply pesticides, herbicides and fertilizers more effectively and efficiently with a Shielded Sprayer for Grasshopper zero-turn mowers. The patented design contains the spray pattern for on-target application, even in windy conditions. And the independent suspension and dolly wheels follow ground contours for precise and even spray application. Each spray chamber features 4 spray nozzles that provide uniform coverage by applying finer spray droplets that coat vegetation instead of dousing it. Zero-turn maneuverability eliminates wasted motion, spraying up to 5.5 acres per tank with fewer chemicals, faster application times and faster drying times, while keeping chemicals away from the operator and non-target areas.

**Grasshopper**

## John Deere HD200 and HD300

The HD200 and HD300 offer the ultimate in flexibility, with a choice of centrifugal or diaphragm pumps, manual or automatic rate controls, and boom options that come standard with an electro-hydraulic lift. More versatile than a single-purpose sprayer, no tools are needed for tank removal, and storage stands allow the operator to get more out of the vehicle, even when not spraying. The optional CleanLoad chemical agitator makes it easy to load chemicals by ensuring that every last drop is used, and a powerful jet agitator makes sure the tank solution is mixed thoroughly. An efficient valve bank design simplifies operation and plumbing, while standard triple nozzle bodies make nozzle changes effortless. Controls are mounted at the operator's fingertips and can be removed without tools for storage. Durable 11-gauge booms feature bi-directional breakaway to protect the boom. And a common wiring harness makes control system changes a breeze.

**John Deere**

## Shindaiwa's SP45BPE backpack sprayer

Shindaiwa's new SP45BPE backpack sprayer, with 4.5-gallon capacity, covers more ground with commercial-duty power and lasting performance in an easy-to-carry sprayer unit. A 90-psi large-diameter piston pump allows for quick pressure and less pumping. All critical seals are made of chemically resistant Viton material, providing durability and allowing for extended use of harsh chemicals. A 4-stage filter extends the life of the sprayer, and UV inhibitors allow protection from sun exposure. The unit comes with 3 nozzles: a brass adjustable, a fixed fan, and a fixed cone. The Euro-style tank is marked in both gallons and liters with true capacities allowing room for chemicals. The SP45BPE has extra padding for back and waist support with a waist/chest strap and a back pad. It requires no tools to assemble and the comfort grip handle features a shut-off with lock on and lock off. It also carries a 2-year commercial warranty.

**Shindaiwa**

## Stihl SG 20

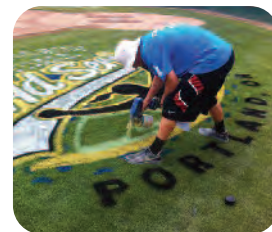
The Stihl SG 20 is a comfortable and lightweight manual backpack sprayer that helps users get through the day with less fatigue and helps ensure constant working pressure, thanks to a pressurized fluid reservoir separate from the main tank. Now users can maintain constant pressure, even through refills. When working with compounds such as pesticides and herbicides, accuracy and control are top priorities. The SG 20 features 18-liter tank capacity, 40 psi (+/- 10%) working pressure, and 11.2-pound weight without liquid.

**Stihl**

## TurfEx introduces line of skid-mounted spot sprayers

TurfEx introduces its line of skid-mounted spot sprayers. Designed to mount into the bed of any utility vehicle or pickup, the new spot sprayers are ideal for weed spraying, turf maintenance, tree and flower watering, and pest control applications. Two TurfEx spot sprayers are currently available with a 50-gallon tank and a 100-gallon tank. Both units feature fully corrosion-resistant polyethylene tank construction, 50-foot hoses on 100-foot capacity manual-rewind hose reels, and long spray wands with trigger actuation. Featuring 12-volt diaphragm pumps, the sprayers conveniently connect to the carrying vehicle's electrical system for operation. The pumps move liquid at a rate of 5 gallons per minute at 40 psi.

**TurfEx**



## Game Changer



### Game Changer is infield conditioner plus surfactant

Southern Athletic Fields has introduced Game Changer, with KT3 technology that delivers a premium surfactant blend to your infield mix, promoting faster infiltration of applied water or rainfall. This one product means you don't have to make additional applications with sprays or injectable products; rather it is included in your normal application of your conditioner. Independent third party research has proved the ability of the Game Changer to deliver the surfactant blend to the infield mix profile. In the research, the addition of the surfactant blend improved the infiltration of applied water by 50% (half the time required to soak up the same amount of water).

**Southern Athletic Fields**



### Sidekick: STMA 2012 Innovative Award winner

We designed the Sidekick as an attachment to our sod installation machines so as not to require an additional machine on the job site. We needed it to be powerful and compact, mobile, and easy to operate and not require an additional operator. We also needed it to not damage the existing grade and more importantly, to the sod being installed. That meant it could not touch the grass. This was accomplished instead by using the ground force to keep the pushing edge completely square with the edge of the sod. By using the Sidekick we can install thick cut sod on an athletic field in a fraction of the time as before and the results are outstanding. We are compressing the sod as we install it by approximately 5%, eliminating seams and actually improving the quality of the sod.

**Green Source, Inc.**



### Turf Teq Power Rake

The Turf Teq Power Rake is the perfect tool for all types of seedbed preparation and turf renovation. The unit features a 36 inch wide drum. The pivot angle of the drum can be adjusted to the left or right from the operator position. The unit also features a hydrostatic transmission, 13 horsepower Honda® engine and on-the-go differential lock. The Power Rake has a multi use tractor that can easily be converted to a walk behind Power Broom, Power Edger, Brush Cutter and Plow.

**Turf Teq**

### TH300 - portable soil moisture probe

The new TH300 is a fast, accurate and completely portable soil moisture probe. Based on TH20, Theta probe technology, the TH300 uses the SM150 soil moisture sensors. Results are in water by volume ( $\pm 2.5\%$ ). The HH2 readout stores over 1000 data points, which can be downloaded to a PC and imported into spreadsheets. The SM300 minimizes soil disturbance, preserving the original soil structure around the measurement rods. It is easy to insert and install whether at the soil surface or at depth. The SM300 is a dual-purpose probe; it can be used both with the HH2 hand-held Moisture Meter for instant moisture readings, or left in situ for data logging of moisture and temperature.

**Dynamax, Inc.**

### New 72-volt, AC-powered Cushman Hauler turf utility vehicles

Cushman has introduced the fully electric Cushman Hauler with a 72-volt AC drivetrain that provides the range and power once exclusive to gas-powered machines in a silent, zero-emissions vehicle. The new machine offers up to 50 miles of range between charges. The patented AC Drive technology is up to 25% more energy-efficient than DC technology, and also provides for unique features such as regenerative braking that recharges the batteries whenever the vehicle's brakes are applied and also speed control to maintain constant speeds up and down steep slopes. An optional limited-slip differential provides for greatly improved traction on wet or loose turf, while helping to protect turf from damage due to wheel slippage. The Hauler will feature a maximum load capacity of 1,000 pounds and come standard with a 9.5-cubic-foot cargo bed. A 14.9-cubic-foot aluminum cargo bed will be available as a factory-installed option for facilities that require more cargo space.



### Jacobsen unveils new large-area reel mower

The Jacobsen LF510 five-gang reel mower features a 100-inch width-of-cut, five-inch TrueSet cutting units and a Tier 4 final Kubota diesel engine. The mower also offers a host of simplified maintenance features including wet parking brakes, an on-board control module and easily-accessible service items. The LF510 large-area reel mower will come standard with Jacobsen's new TrueSet™ cutting units, first introduced in 2012. TrueSet cutting units are fast and easy to adjust while providing industry-leading holding power to deliver Jacobsen's clean and consistent quality-of-cut through the life of the cutting unit. The company also offers the five-gang LF550/LF570™ with 100-inch width of cut; the five-gang super lightweight SLF-1880™ that offers an 82" width of cut and the LF-4677™ a seven-gang fairway mower that offers a massive 139" width-of-cut.

**Jacobsen**



### Profile Products Introduces CoverGrow mulch pellets

New CoverGrow Spread or Spray advanced pellet technology introduced by Profile Products offers unmatched on-the-ground performance compared to other leading pellets. CoverGrow can be applied by hand or spreader, or sprayed hydraulically. CoverGrow mixes easily, even in jet-agitated hydroseeders where it goes quickly into suspension. It is also designed to provide a smoother flow for easy spreader application. Once activated by water, the pellets quickly expand in size and disperse to provide greater coverage and a stronger protective cover. A 40-pound bag of CoverGrow yields 50 pounds of coverage. Made from recycled wood and cellulose fibers, CoverGrow pellets also feature an advanced tackifier technology that helps resist rainfall impact and keep the pellets in place.

**PROFILE Products LLC**

## NewRider 1700 HPA high pressure airless ride-on field striping machine

Newstripe Inc. is proud to announce the introduction of the NewRider 1700 HPA high pressure airless ride-on athletic field striping machine. The NewRider 1700 will save time and money. The 25 gallon paint tank will stripe up to four soccer fields with one filling. Plus, it's American made paint pump can be adjusted from 0-3000 psi. Consequently, the paint is sprayed at exactly the right pressure reducing the amount of paint used. You paint "just the turf" and "not the dirt." The on-board purge tank eliminates any clogging of spray tips and makes clean-up a snap. The NewRider HPA 1700 also features a hydrostatic drive and a 10.5 hp Briggs and Stratton OHC engine with electric start.

**Newstripe**



## Novo converts any multi-wire controller to two-wire

Novo, a compact two-wire converter from Underhill International, is designed to quickly transform any standard multi-wire controller to two-wire operation by using a "plug and play" feature. Controllers such as Hunter, Rain Bird, Irritrol, Toro, and other popular brands, can be converted to total two-wire or hybrid two-wire / multi-wire systems when connected to Novo. The new Underhill converter is a practical solution for irrigation installers who plan to utilize two-wire technology in a new installation or a system expansion because they can still use their favorite controller. Novo installs alongside the host controller and handles up to 32 two-wire stations. The host multi-wire controller continues to run all scheduling programs and "talks" to the new two-wire valves and decoders via the Novo converter.

**Underhill**



## Bayer Specticle G granule herbicide

Environmental Science has launched Bayer Specticle G, a versatile, pre-emergent herbicide that provides green industry professionals up to 6 months of broad-spectrum weed control for use in landscapes, including mulched areas and around ornamentals, and in warm-season turf. Bayer Specticle G protects against a broad spectrum of more than 80 grassy and broadleaf weeds, as well as annual sedges. The product requires up to 40 times less active ingredient than current standards, resulting in significantly less herbicide placed in the environment. In addition, unlike other pre-emergent herbicides, the applicator-friendly formulation will not stain or leave any odor behind after treatment.

**Bayer Environmental Science**



# STMA Affiliated Chapters Contact Information

### Sports Turf Managers Association of Arizona: [www.azstma.org](http://www.azstma.org)

**Colorado Sports Turf Managers Association:** [www.cstma.org](http://www.cstma.org)

**Florida #1 Chapter (South):** 305-235-5101 (Bruce Bates) or Tom Curran  
[CTomSell@aol.com](mailto:CTomSell@aol.com)

**Florida #2 Chapter (North):** 850-580-4026, John Mascaro, [john@turf-tec.com](mailto:john@turf-tec.com)

**Florida #3 Chapter (Central):** 407-518-2347, Scott Grace, [scott@sundome.org](mailto:scott@sundome.org)

**Gateway Chapter Sports Turf Managers Association:** [www.gatewaystma.org](http://www.gatewaystma.org)

**Georgia Sports Turf Managers Association:** [www.gstma.org](http://www.gstma.org)

**Greater L.A. Basin Chapter of the Sports Turf Managers Association:** [www.stmalabasin.com](http://www.stmalabasin.com)

**Illinois Chapter STMA:** [www.ILSTMA.org](http://www.ILSTMA.org)

**Intermountain Chapter of the Sports Turf Managers Association:** [www.imstma.org](http://www.imstma.org)

**Indiana -FORMING -** Contact Clayton Dame, [Claytondame@hotmail.com](mailto:Claytondame@hotmail.com) or Brian Bornino, [bornino@purdue.edu](mailto:bornino@purdue.edu)

**Iowa Sports Turf Managers Association:** [www.iowaturfgrass.org](http://www.iowaturfgrass.org)

**Kentucky Sports Turf Managers Association:** [www.kystma.org](http://www.kystma.org)

**Keystone Athletic Field Managers Org. (KAFMO/STMA):** [www.kafmo.org](http://www.kafmo.org)

**Michigan Sports Turf Managers Association (MiSTMA):** [www.mistma.org](http://www.mistma.org)

**Minnesota Park and Sports Turf Managers Association:** [www.mpstma.org](http://www.mpstma.org)

**MO-KAN Sports Turf Managers Association:** [www.mokanstma.com](http://www.mokanstma.com)

**Nebraska Sports Turf Managers Association:** [sphillips4@unlnotes.unl.edu](mailto:sphillips4@unlnotes.unl.edu)

**New England STMA (NESTMA):** [www.nestma.org](http://www.nestma.org)

**Sports Field Managers Association of New Jersey:** [www.sfmanj.org](http://www.sfmanj.org)

**Sports Turf Managers of New York:** [www.stmony.org](http://www.stmony.org)

**North Carolina Chapter of STMA:** [www.ncsportsturf.org](http://www.ncsportsturf.org)

**Northern California STMA:** [www.norcalstma.org](http://www.norcalstma.org)

**Ohio Sports Turf Managers Association (OSTMA):** [www.ostma.org](http://www.ostma.org)

**Oklahoma Chapter STMA:** 405-744-5729; Contact: Dr. Justin Moss [okstma@gmail.com](mailto:okstma@gmail.com)

**Oregon STMA Chapter:** [www.oregonsportsturfmanagers.org](http://www.oregonsportsturfmanagers.org)  
[oregonstma@gmail.com](mailto:oregonstma@gmail.com)

**Ozarks STMA:** [www.ozarksstma.org](http://www.ozarksstma.org)

**Pacific Northwest Sports Turf Managers Association:** [www.pnwstma.org](http://www.pnwstma.org)

**Southern California Chapter:** [www.socalstma.com](http://www.socalstma.com)

**South Carolina Chapter of STMA:** [www.scstma.org](http://www.scstma.org)

**Tennessee Valley Sports Turf Managers Association (TVSTMA):** [www.tvstma.com](http://www.tvstma.com)

**Texas Sports Turf Managers Association:** [www.txstma.org](http://www.txstma.org)

**Virginia Sports Turf Managers Association:** [www.vstma.org](http://www.vstma.org)

**Wisconsin Sports Turf Managers Association:** [www.wstma.org](http://www.wstma.org)

## Chapter Sponsors

