

JOHN MASCARO'S PHOTO QUIZ

John Mascaro is President of Turf-Tec International

Can you identify this sports turf problem?

Problem: Green line behind field

Turfgrass area: Soccer fields

Location: Callaway, FL

Grass Variety: 419 Bermudagrass

Answer to John Mascaro's Photo Quiz on Page 33



Background illustration courtesy of istockphoto.com

You're Always Ahead of the Game with a COVERMASTER® Raincover...

"Excellent Quality.. Competitive Prices..."

wrote **Johnson Bowie**, Associate AD,
Drexel University, Philadelphia, PA

Johnson's comments confirm what we hear from the many groundskeepers who use a COVERMASTER® raincover to keep their fields dry and ready for play.

Call us and we'll gladly tell you more.

The COVERMASTER® Advantage...

- Superior in strength and UV resistance
- Outstanding heat reflective properties
- Light weight - easy to handle
- Widest materials for least number of seams
- Largest choice of weights and colors
- Backed by truly dependable warranties

TARP MACHINE VIDEO!

Call, fax or e-mail for a free video, material samples and a brochure.



Covers for football and soccer fields are also readily available.

TARP MACHINE™ lets you roll the cover on and off in minutes.

TARPMATE™ roller comes in 3 lengths with safety end caps.

COVERMASTER™
COVERMASTER
COVERMASTER

MASTERS IN THE ART OF SPORTS SURFACE COVERS

CALL TOLL FREE
1-800-387-5808

covermaster.com

E-MAIL: info@covermaster.com



COVERMASTER INC., 100 WESTMORE DR. 11-D, REXDALE, ON, M9V 5C3 TEL 416-745-1811 FAX 416-742-6837

JOHN MASCARO'S PHOTO QUIZ

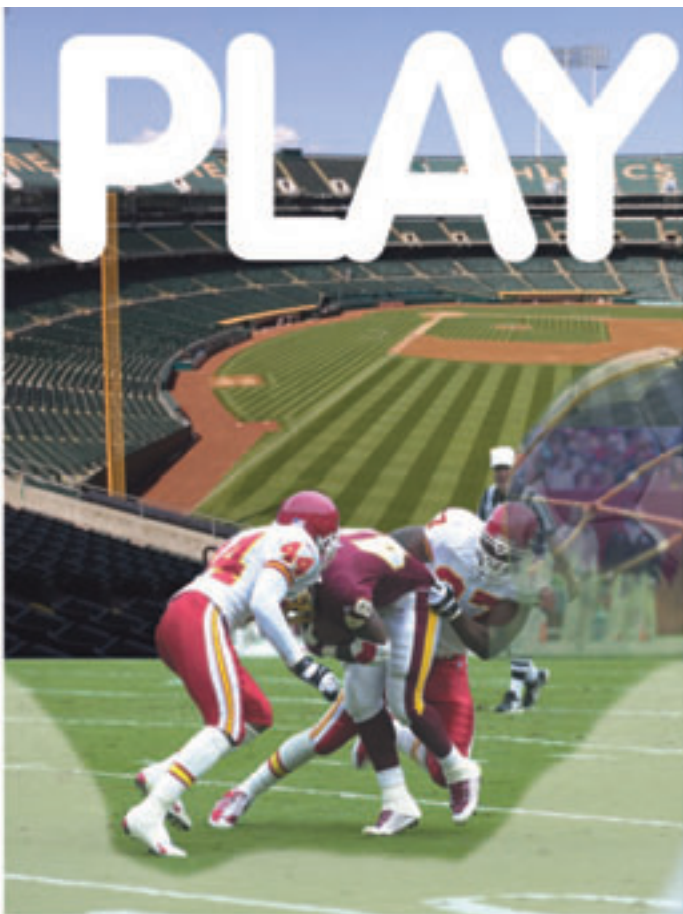
Answers from page 17

These soccer fields in Northern Florida have a base of 419 Bermudagrass and are lightly overseeded with perennial ryegrass for winter play. During the overseeding process, the seed spreader was being pulled by a utility vehicle and the extra seed bags were in the back with the gate down. Apparently while spreading the seed, one of the bags dropped off the back of the utility vehicle and impaled itself on the seeder actuator arm causing the seed to quickly spill out as the operator moved along. This spill was not noticed by the operator until the next pass with the seeder. Instead of reporting the problem to the Sports Turf Manager, the employee decided to clean the spilled seed up by dispersing the seed with a backpack blower. The incident was not reported until ryegrass had germinated and the Sports Turf Manager noticed this line of heavy ryegrass and questioned the employee. The photo also shows how effective his cleanup effort was and was taken a full 2 months after the incident. The area was visible through the entire winter soccer season until the ryegrass transitioned out; since it was not on the playing surface, it did not cause any problems.

Photo Submitted by Tim Legare, CSFM, CPRP, Director of Leisure Services for the City of Callaway, FL and NFSTMA President.



If you would like to submit a photograph for John Mascaro's Photo Quiz please send it to John Mascaro, 1471 Capital Circle NW, Ste # 13, Tallahassee, FL 32303 call (850) 580-4026 or email to john@turf-tec.com. If your photograph is selected, you will receive full credit. All photos submitted will become property of *SportsTurf* magazine and the Sports Turf Managers Association.



PLAY BALL!

FOOTBALL, BASEBALL, SOFTBALL, SOCCER

Any sport played on natural grass is a natural for TifSport Bermudagrass. If you're looking for a sports turf that can handle non-stop action, a transition zone climate and heavy overseeding, TifSport's your answer. It's ideal for intramural fields, practice fields and game-day venues, where everything has to be perfect.

Coaches and players love the way it looks and plays and you and your crew will appreciate how easy it is to manage. TifSport can only be sold as certified sod or sprigs and only by licensed members of the TifSport Growers Association. For more information visit us at www.tifsport.com, or call 706 552-4525.

TIFSPORT  
CERTIFIED BERMUDAGRASS
www.tifsport.com