

Products you can see
at **STMA Conference in Long Beach**



New versatile outdoor adhesive

NORDOT Adhesive #34P-4 from Synthetic Surfaces Inc. is a new, one component outdoor adhesive that was designed to install and/or repair synthetic turf and other outdoor surfaces in widely variable and sometimes hostile weather conditions. It fills the need for a versatile adhesive

which allows the outdoor installation and repair season to expand from only "fair weather" days to year-round. It can be applied to a dry or damp surface at any outdoor temperature and humidity in which an installer can work. It is particularly useful in cold weather, when turf installations and repairs usually stop because, the company says, no other adhesive can be used for installation from hot desert temperatures down to below freezing. After curing, it has durability both above ground and under water.

Synthetic Surfaces Inc.,



Pro Mound packing clay

No baseball field is complete without properly installed batter's boxes and pitcher's mound. Pro Mound alleviates common wear problems created by hitters and pitchers. This unique blue gumbo packing clay is used to form a solid sub-surface when building these areas, allowing players to "dig in" and establish footing without

leaving large holes. It is highly durable, helps reduce maintenance, and gives players more solid footing season after season.

Step 1: Remove the top 4-6 inches of infield.

Step 2: Lightly water and allow to soak in.

Step 3: Apply 1" Pro Mound and tamp to compact. Repeat steps 2-3 to within 1/2" of finished grade.

Step 4: Cover with infield mix, tamp and finish with Pro's Choice infield conditioner.

Pro's Choice



Lighter weight Terra Groom model

This year at the STMA in Long Beach, Wiedenmann will display the new, lighter weight Terra Groom with stiffer front brushes

which act as rake fingers, without the additional cost of the rake fingers and without the risk of catching a seam. In addition, by exchanging the front row of brushes, this same brush works really well on natural turf fields. Wiedenmann will also be exhibiting their Terra Clean M artificial turf sweeper and a variety of turf aerification, verticutting, and sweeping equipment for natural turf surfaces.

Wiedenmann North America, LLC

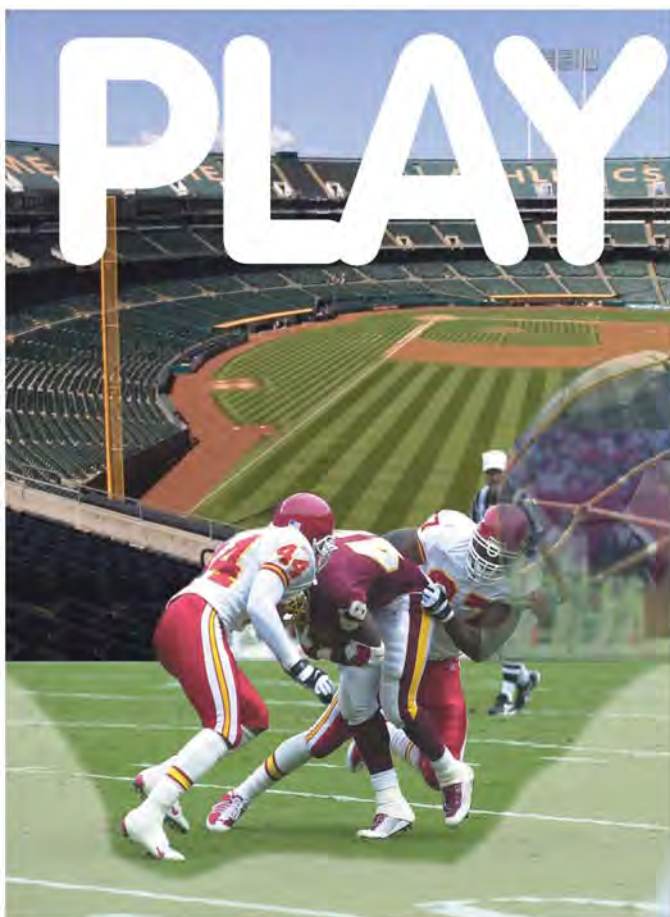


"Line Expert" walk-behind striper

Kromer introduces the LINE EXPERT airless, high-pressure walk behind line striper that is designed for budget conscious buyers. The unit is a multi-purpose liner for natural & synthetic turf as well as asphalt and it features

freely adjustable (no tools required) high pressure from 200 to 3,000 psi. Paint your athletic fields, parking lots, track and field events, and logos/stencils with just one machine. The unit is priced under \$2,000 delivered!

Kromer



BALL!

FOOTBALL, BASEBALL, SOFTBALL, SOCCER

Any sport played on natural grass is a natural for TifSport Bermudagrass. If you're looking for a sports turf that can handle non-stop action, a transition zone climate and heavy overseeding, TifSport's your answer. It's ideal for intramural fields, practice fields and game-day venues, where everything has to be perfect.

Coaches and players love the way it looks and plays and you and your crew will appreciate how easy it is to manage. TifSport can only be sold as certified sod or sprigs and only by licensed members of the TifSport Growers Association. For more information visit us at www.tifsport.com, or call 706 552-4525.



Revolution soil surfactant

Revolution makes it easier to protect your team by protecting your turf. This patented soil surfactant technology provides better moisture access and gas exchange in the root zone, improving overall turf health and making it much more resilient under all types of stresses. Revolution moves water and water-soluble inputs off the surface and into the soil more uniformly, which helps you produce more uniform playing surfaces that can stand up to (and recover quickly from) the rigors of play.

Aquatrols

Turfplaner machine to debut in Long Beach

g2 turftools, inc. will be introducing its newest piece of equipment, the turfplaner, at the STMA show in Long Beach. The 84-in. turfplaner is a patent pending device that is capable of resurfacing and removing the surface irregularities of existing turf in a single pass to a grade tolerance of +/- 1/16 in. Through the use of dual proportional lasers and/or the patent pending auto grade technology, lip removal on baseball and softball fields is now a simple one hour, one step process that is cost effective, time efficient and most important, within the reach of every maintenance budget. If the existing turf is unacceptable, the turfplaner can also be used to prepare the existing surface to receive new sod or seed in a single pass, removing the existing turf and laser grading the field at the same time with out disturbing the underlying soil.

g2 turftools

AERA-vator is versatile

The AERA-vator uses a patented vibrating tine action to fracture the hardest soil with very little surface disruption. The AERA-vator is used for incorporating athletic field conditioners on the skinned area of a baseball fields and aeration on the turf areas. If you want to lower equipment cost and uses one of the most versatile pieces of equipment on the market; the AERA-vator is the right choice in equipment for you.

First Products

Evergreen turf cover by COVERMASTER

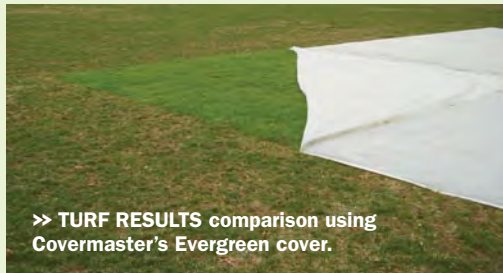
TODAY, groundskeepers rely on the use of a turf cover in the maintenance of natural grass sports fields. A turf cover can prevent desiccation (winter kill); it can speed germination of seed, promote stronger root development and delay dormancy in the fall or have the turf green-up quicker in the spring.

There are a number of turf covers on the market today that promise various levels of results in these areas. One is a spun bond geotextile. Others are permeable and non-permeable polypropylene covers. Then there is a cover that is made of woven polyethylene with a liquid lace coating that binds the polyethylene strands together. This is the most widely used cover because it results in superior performance.

EVERGREEN is such a cover and has been on the market for more than 20 years. Its open weave lets air, moisture and sunlight penetrate the cover resulting in a greenhouse type of effect, yet it allows excess heat to escape. That's the basic premise and it works.

EVERGREEN is available in three color models, white, green and silver, each providing a specific function. The white cover allows full penetration of the three important elements—air, moisture and sunlight—that promote healthy turf. The green cover is identical except that it draws more heat to the soil because of the dark green coating.

Silver takes the cover to the next level of performance by reflecting heat that rises from the soil



>> **TURF RESULTS** comparison using Covermaster's Evergreen cover.

underneath the cover back into the turf. In fact, a soil temperature increase of as much as 15 degrees has been recorded under the silver cover when compared to the other colors.

In addition to the properties of the various colors, all EVERGREEN models are manufactured with SMART EDGE technology, which means that the cover can be cut to any shape or size. No hems or grommets are required because the patented lace coating keeps the material intact. This special feature means that to keep the cover in place, anchor pegs can be used without limitations anywhere on the cover. This is not the case with polypropylene covers that can only be anchored in grommet locations or else the material will unravel and separate.

In selecting a turf cover, performance, longevity and proven success are the best criteria. With so many different covers on the market, the best advice is to get feedback from current users. While many covers will help take natural turf through the winter, the question to ask is which one has the best results in all aspects. ■

CoverSports USA FieldSaver winter turf blankets/growth covers

FIELD SAVER COVERS keeps turf protected all year long, from harsh winter conditions to promoting faster spring growth and green-up.

FieldSaver is also a budget-saver; Josh Slayback, athletic field technician for the City of Clayton, MO calculated the savings impact of FieldSaver:

"Winter turf blankets are an excellent investment, especially when considering that sodding two 60 x 60-foot soccer goal mouths each spring over an 8-year period would cost us over \$16,000. To purchase two 60 x 60-foot winter turf covers, seed and preventative fungicide over an 8-year period (the life expectancy of the blankets) will cost us an estimated \$2,500."

The Shaw Park 2010 winter renovation plan was:

- Core aerate 6 directions
- Seed with a turf-type tall fescue/Kentucky

bluegrass mix @ 15# per 1000 ft²

- Apply a granular preventative fungicide
- Cover the goal mouths with 60 x 60-foot winter turf blankets
- Run the last irrigation cycle of the season

FieldSaver winter turf blankets/growth covers feature Woven Polypro, translucent fabric with 90% light pass-through for better, quicker growth; hems and brass grommets means the cover can be secured with staples or stakes that stay put; and optional yellow safety color stakes mean more visibility, reduces tripping hazards and prevents loss of stakes in



>> **BEFORE/AFTER** photo taken at Shaw Park, Clayton, MO on 12/2/2010.

turf. More and more experts are including winter growth blankets/growth covers in their turf protection plan. Can your turf and budget handle passing on this small investment for another year? ■

Products you can see
at **STMA Conference in Long Beach**



New Workman UV with diesel engine

The new Toro Workman MDX-D marks the company's first mid-duty utility vehicle featuring a diesel engine. Incorporating all of the innovative features of the Workman line, this new diesel unit provides powerful performance and durable operation, boasting higher torque, greater fuel efficiency and exceptional operator comfort through the SRQ (Superior Ride Quality) suspension system. The 36.55 cu. in. Kubota diesel engine is liquid cooled providing longer engine life than gas engine models. And with the continuous variable transmission belt-drive transmission design, this unit delivers high compression rates, resulting in greater power, improved towing capacity and better fuel economy. The MDX-D can travel up to 21 mph and has a 6.5-gal capacity fuel tank.

The Toro Company



Ultra friendly colors

Pioneer Athletics knows that ingredients matter. It's what led them to develop their environmentally conscious Ultra-Friendly line of field marking paints that are completely free of Volatile Organic Compounds (VOCs) and include more readily biodegradable components. Ultra-Friendly Brite Stripe, StarLine and Game Day paints will now be available in an expanded range of colors: blue, yellow, orange, red and black. Blue and White Ultra-Friendly colors are already the world's first and only EPA-recognized paints. Pioneer and the EPA are in discussions on recognition for the expanded line of colors as well.

Pioneer Athletics



Gator TX Turf

John Deere Gator TX Turf was designed with the turf care professional in mind, featuring special turf-friendly tires, improved operator comfort and the quietest operation. With all-wheel suspension and all-wheel hydraulic disc brakes, the Gator TX Turf can handle a variety of terrain. The frame-isolated engine and exhaust system, a large-volume muffler and improved foot-pedals, allow it to operate at the quietest level. More powerful than the previous generation of Gators, the TX Turf features a 401 cc Kawasaki FJ400 engine, increased payload capacity and improved braking capabilities. From performance to comfort, the Gator TX Turf specifically meets the ever-expanding needs of turf care professionals.

John Deere



STEC Equipment

STEC Equipment is an industry leader in Specialized Turf Equipment distribution, offering the highest quality turf equipment from around the world, and several STEC brand products, including the Ground Quake Sand Injector and Dump Trailer. With a direct sales model, we make the latest European technologies available to the turf professional. Since 2011, STEC Equipment has been the North American distributor for RotaDairon, a company with a rich history dating back to 1958. RotaDairon has been a staple in the seed bed preparation market with the legendary Soil Renovator. With the ability to bury the top layer of turf, as well as any rocks and debris, the Soil Renovator is able to create a perfect seed bed in one pass.

STEC Equipment



IncrediSeal hems mean no stitches

IncrediSeal reinforced hems and seams are a new standard feature on all ArmorMesh products. All sewing and stitching eliminated with zero possibility of thread breaks, open seams or hems. Clean look with no pleats, no black webbing on hem, no stitches and there is web reinforcement inside the 3-ply heat bonded hem. IncrediSeal is standard on all ArmorMesh field covers, batting practice infield protectors and collar protectors, football sideline tarps, jump pit covers and windscreens.

CoverSports USA



diamondpro.com

Diamond Pro Professional Mound Clay

Diamond Pro Professional Mound Clay is a screened heavy clay with a natural yellowish-brown color. This heavy clay has a higher clay content than our red Mound Clay and will require more attention for application. For example, it is imperative that this product be hydrated at least one day before use in order to have the right moisture for compaction and ultimate performance. This clay can be used to construct, rebuild or repair pitcher's mounds, catcher's and batter's boxes. Diamond Pro Professional Mound Clay recently received very high marks in an independent Mound Clay study performed at Virginia Tech University.

Diamond Pro



Newstripe introduces NewRider 5000 HPA

The NewRider 5000 HPA is the first true ride-on airless striping machine for athletic fields. Front wheel drive with rear steering quickly produces straighter, brighter looking lines on multiple fields with the 0-3000 psi pump and 50-gallon tank. The NewRider 5000 features a Hydrostatic drive, 14 hp Subaru engine, high back seat with tilt steering column, 2.5 gallon on-board purge tank and removable gun with 25-foot hose for painting stencils.

Newstripe

Turf Stripper

The Turf Stripper is a rugged, economical and efficient machine used to mow, level, de-thatch and renovate turf areas using a rotary action that removes material and deflects it onto a conveyor to be carried away. The Turf Stripper 2000 is equipped with custom blades that allow the machine to be highly productive, yet can be adjusted in small increments. An option verticut blade kit can be installed in place of the standard blades when the machine is to be used for dethatching golf courses, sports-fields or common areas. The machine is also a highly effective method of harvesting sprigs when trying to introduce bermuda and other grasses to new areas.

Redexim Charterhouse

Barenbrug keeps innovating

RPR won the innovative award last year at the STMA conference. After several years we have many happy customers from all over the USA and other parts of the world. If you are using perennial ryegrass under high traffic areas you need to stop by our booth at the STMA show and learn more. Barenbrug USA will have another new program to introduce at the STMA show; it will be worth your time to find solutions for your turf grass fields. We will also have information available on our other successful programs like SOS, Turf Blue, Super-charged bermudagrass, Yellow Jacket and Turf Saver RTF. And we will have a raffle for an iPad as usual!

Barenbrug USA

Turfco CR-7 topdresser

The Turfco CR-7 topdresser and material handler is designed to handle the mid-range level of topdressing and renovation. The CR-7 is the perfect choice for sports complexes with multiple fields or for completing renovation work. The CR-7 uses Turfco's patented WideSpin technology, which gives operators the most accurate spread from light to heavy and patterns as wide as 40 feet, making it easy to topdress multiple fields. An adjustable spinner angle allows operators to drive topdressing into the turf for better integration with a total range of 26 degrees up and down. A patented three-position switch always ensures a clean application by guaranteeing that the attachments turn on prior to the main conveyor, and an adjustable flow control sets the speed.

Turfco Manufacturing



The Virginia Horticultural Foundation
Presents the 2012
**MID-ATLANTIC HORTICULTURE
SHORT COURSE**

JANUARY 30 - FEBRUARY 2, 2012
at the NEWPORT NEWS MARRIOTT at CITY CENTER

\$95 per day | CEUs and Certifications | mahsc.org | 757.523.4734

Invited Speakers

- KIRK BROWN as John Bartram, America's First Horticulturist
- NAN CHASE, Author: Eat Your Yard
- TRACY DISABATO-AUST, Author: Well-Tended Perennial Garden
- MELISSA FISHER, High Line, NYC
- MIKE GOATLEY, Turfgrass Specialist, Virginia Tech
- GARY JOHNSON, Arboriculture & Forestry, University of Minnesota
- RICH POMERANTZ, Photography & Macro-Photography Workshops
- AMY STEWART, Author: Wicked Bugs & Wicked Plants
- JEAN ANN VAN KREVELEN, White Willow Media

Find us on Facebook

ATHLETIC FIELD PRODUCTS

H₂O
AB Zorb

STMA Booth 1327

RAIN - POUR - PLAY
www.gametimesportssystem.com

Louisville Slugger® **GAMETIME** Sports Systems, LLC

Louisville Slugger® is a registered trademark of Hillerich & Bradsby Co.