

## Is a propane-fueled mower in your future?



» **PROPANE-FUELED COMMERCIAL LAWN MOWERS**, like the Ferris Propane Powered IS 3100 ZP zero-turn model, can help sports turf managers and landscape contractors achieve lower operating costs.

**A** PRISTINE NATURAL GRASS PLAYING SURFACE that both catches the eye of sporting event spectators and is safe for players is the goal of every sports turf manager that services those grounds. Arriving at that gorgeous, dark-green turf requires cost, and increasingly environmental, considerations, both of which are driving equipment purchase decisions.

The answer may be propane-fueled commercial mowers and equipment. Studies show propane-fueled lawn mowers reduce greenhouse gas emissions by almost 50%

compared with gasoline-fueled counterparts, and carbon monoxide emissions by more than 80%. Those low emissions mean labor continues on Ozone Action Days when use of gasoline-fueled mowers is limited or prohibited.

Propane-fueled mowers can also help sports turf managers achieve lower operating costs. For example, propane is a cleaner-burning fuel than gasoline, making oil changes easier. Further savings comes from the elimination of fuel spillage, leakage, and theft that can plague gasoline use. Financial

When it comes to propane-fueled mowers, sports turf managers have plenty of options from which to choose. More than 29 propane-fueled commercial lawn mower models exist today from the industry's top brands.

### Available equipment options

This list is just a start; visit [www.poweredbypropane.org](http://www.poweredbypropane.org) for more information.

◎ **Ariens/Gravely:** The Pro-Master 260H LP XDZ zero-turn mower features a 28hp/992cc Generac LP engine.

◎ **Bad Boy:** The Propane Series zero-turn mower uses a Briggs & Stratton 895cc/32hp Vanguard V-Twin engine allowing for an 80 percent emissions reduction.

◎ **Cub Cadet Commercial:** The new TANK S LP zero-turn mower utilizes an 852cc or 999cc Kawasaki engine powered by liquid propane.

◎ **Dixie Chopper:** The Xcaliber Propane zero-turn mower is fueled by two 40-pound propane cylinders and a 990cc Generac LP engine.

◎ **Exmark:** The Lazer Z Advantage Series zero-turn mower is powered by a 28hp Kawasaki V-Twin engine. Also available are the Turf Tracer and Turf Tracer HP propane-fueled walk-behind mowers.

◎ **Ferris Industries:** The IS 3100Z zero-turn mower features an 895cc Briggs & Stratton Vanguard Big Block V-Twin engine with vapor-draw fuel tanks.

◎ **Husqvarna:** The PZ6029PFX zero-turn mower uses a Kawasaki FX Series 29hp/852cc engine. Optional 33-pound tanks hold about 14 gallons of propane, allowing all-day operation.

◎ **Scag Power Equipment:** The zero-turn Dual-Fuel Turf Tiger is the only dual-fuel powered commercial mower on the market, with the ability to operate on both liquid propane and gasoline. An optional propane-only conversion kit allows it to conform to local regulations, while the mower is also available with a Kohler propane-fueled engine.

◎ **Schiller Grounds Care:** The Bob-Cat Predator-Pro LP zero-turn mower uses a 30hp Generac engine designed to take advantage of propane's higher octane level.

◎ **Snapper Pro:** The S200xp zero-turn mower features an 895cc Briggs & Stratton Vanguard Big Block V-Twin engine, offering up to 30 percent reduced emissions.

◎ **Zipper Mower:** The front-mount Model STS-28LP uses a Kawasaki 28hp air-cooled OHV engine.

In addition to those mowers, propane-fueled hand-held equipment is also available. For example, both the Lehr Incorporated Eco Trimmer and Eco Blower use a 16.4-ounce propane canister to operate a 25cc four-stroke engine, achieving a 2-hour run time. Both products produce no evaporative emissions, and avoid the need for priming, carburetor gum-up, and winterizing. ■

incentives are also available from select state propane gas associations that offer reimbursements for incremental costs associated with purchasing a propane-fueled mower.

When it comes to propane-fueled mowers, sports turf managers have plenty of options from which to choose. More than 29 propane-fueled commercial lawn mower models exist today from the industry's top brands. Available models allow sports turf managers to quickly tap into the sustainability and cost benefits, along with the propane refueling infrastructure already in place. Other propane-fueled lawn equipment on the market today includes hand-held equipment like string trimmers and blowers.

Also known as liquefied propane gas, LP-gas, or simply LP, propane is nontoxic, colorless, and virtually odorless; an identifying odor is added so the gas can be readily detected. Propane cylinders of varying capacities are mounted horizontally on propane-fueled mowers. Most cylinders are for vapor service only, and include a liquid prevention device (LPD) attached to the end of the vapor tube, along with an overfill prevention device (OPD). These cylinders are mower specific, even

though they might look similar to propane cylinders used for forklifts. What makes them different are a left-hand connection and a specific collar that indicates mower use only, helping ensure the proper equipment is deployed.

Two types of fuel systems are available on propane commercial mowers, liquid injection and vapor injection. Working closely with equipment dealers, manufacturers, and local propane providers can help sports turf managers identify the mower and fuel system that best fits the needs of both their facilities and staffs.

Many propane providers offer cylinder exchange programs, which usually include on-site installation of a cage to house cylinders. For larger volumes and multiple facilities, a no-spill dispenser can be installed on site at a centralized location and used to refuel both mowers and propane-fueled work trucks. ■

*Brian Feehan is Vice President of the Propane Education & Research Council, which came into existence by an act of Congress in 1996. Its mission is to promote the safe, efficient use of odorized propane gas as a preferred energy source.*

## Foliar fertilizer

Recover Rx 3-18-18 with SA is a foliar spray that improves turf health and helps turfgrasses withstand stressors such as extreme temperatures, drought, and disease. With 8 oz. of salicylic acid per gallon, an ideal P to K ratio of 1:1, and a proprietary blend of phosphorus sources, Recover Rx is exactly what the doctor ordered.

Recover Rx's key ingredient is salicylic acid (SA), the active ingredient in aspirin. A natural plant hormone (phytohormone), SA is produced in small quantities by all plants, and is present in high concentrations in willow trees. (The name salicylic acid is derived from the botanical name of the willow family – Salix.)

Applications at time of sodding and overseeding are especially beneficial, according to Randy Oberlander, a Nutrition Specialist with Growth Products. "Recover Rx with SA is ideal in these situations. Its salicylic acid stimulates growth and initiates the turf's systemic acquired resistance (SAR), while its phosphorus content kick-starts critical root growth," Oberlander explains.

[www.growthproducts.com](http://www.growthproducts.com)



**For Cool/Cold Weather  
Turf Installations  
In Late Fall and Early Spring,  
Use NORDOT® Adhesive #34P**

**WANT THE FACTS? - Write, Call or Visit our Website:**

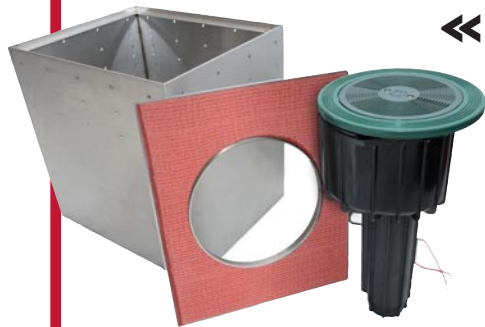


P.O. Box 241  
Scotch Plains, NJ 07076 U.S.A.  
Tel: (908) 233-6803  
Fax: (908) 233-6844  
E-mail: [info@nordot.com](mailto:info@nordot.com)  
Web: [www.nordot.com](http://www.nordot.com)

## ◀ **NORDOT® Adhesive #34P** ▶

**Thixotropic One-Part Curing Urethane With a Light Mayonnaise Type Consistency.**

- High and fast development of green strength (high grab) in cool/cold weather.
- Easy application and spreading even when cold.
- "Stands up" and holds trowel ridges on both flat and vertical surfaces.
- Ideal for applying to seaming tape from a "glue box".
- Great for faster bonding of hash marks, team logos, game lines and other turf inserts.
- Excellent fast repair adhesive.



◀◀ **Turf box for use on synthetic track & field facilities**

Underhill International introduces a new custom-designed Turf Box to house the company's long-throw Mirage-125 sprinklers, typically installed around the perimeter of synthetic sports fields. Mirage-125 heads are used to cool down and clean artificial track and field surfaces before practice or competition. By installing the M-125 heads in a stainless steel Turf Box, crews can better access the sprinklers for routine maintenance without disturbing the surface of the playing fields. Constructed to accommodate the oversized M-125 sprinklers, the Turf Box enclosures sit 18" below grade and measure

15" x 18" wide. Artificial turf is laid up to the edge of the Turf Box lid. Sprinklers can be serviced through-the-top of the Box, without interfering with track or field surfaces.

[www.underhill.us](http://www.underhill.us)



**Quantum Growth, new natural product** ⬆

Quantum Growth is a living consortium of microorganisms including photosynthetic strains designed especially for treatment and growth enhancement. Regular use restores nature's microorganisms to the soil allowing the plant to absorb the nutrients it needs to reach its full growth potential. Quantum Growth actually helps reset the soil to its original, enriched state. The microorganisms in Quantum Growth convert light, carbon and even fertilizer into sugar, or plant food, more than 10 times faster than the plants would themselves. A biologically active soil is like having a fertilizer factory making 10-5-2 continually. The microorganisms in Quantum Growth help a plant retain water by capturing water molecules as the plant exhales through the root zone. Combining oxygen and hydrogen to build water, the microorganisms store the water and are able to release it to the plant in dry conditions.

[www.dougllasspeed.com](http://www.dougllasspeed.com)

**Seago introduces the PortaPump**

It is a one-person operated portable pumping machine. A 35cc Honda four-stroke engine powers the 33 GPM pump that is perfect for clearing water from bunkers, Irrigation breaks or leaks, flooded cart paths, low areas, flooded yards, ponds, play or parking areas etc. Half speed trigger lock keeps the machine pumping. Self-priming, easy to transport and operate, the PortaPump is fast and effective. The PortaPump is backed with a one-year warranty ships 90% pre-assembled. Seago sells this unit with a metal mesh sand screen and an extra 16 feet of hose.

[www.seagousa.com](http://www.seagousa.com)



**Turf Teq 1305PL Plow**

Turf Teq has introduced the Model 1305PL Plow. The 46-inch wide plow is ideal for snow removal. The Plow's angle (left / right) can be easily adjusted from the operator position and its unique design has the capability to allow the blade to oscillate or to be locked into position. The Model 1305PL features a spring loaded trip release and a replaceable cutting edge while employing a fully hydrostatic transmission with forward / reverse and a 13 HP Honda engine. The Plow can also be easily converted into a Power Edger, Power Broom, Power Rake or Brush Cutter for all season use.

[www.turfteq.com](http://www.turfteq.com)



**STEC now distributing TRILO products**

STEC Equipment has announced that they will handle North American Distribution for TRILO professional outdoor clean up equipment. With a complete range of Blowers, Verticutters, and Vacuums, STEC has a TRILO to fit any need. The TRILO SG400 is a versatile turf vacuum with many options and features. With over a 5 cubic yard capacity, 33" fan, 80" tipping height, and turf tires, the TRILO makes clean up and collection a breeze. The options include: Verticutting head, so you can verticut and collect in ONE PASS. Hand Held Hose, for clean up around tight areas. Flail mower head, for simultaneous cutting and collection. Gully brush, for curbs and walls. The SG400 truly is a multi-function tool.

[www.stecequipment.com](http://www.stecequipment.com)



## ESP-LX Modular Controller now expands to 48 stations

Rain Bird is taking the ESP-LX Modular to the next level by offering an all-new 12-station module that gives the controller the ability to accommodate up to 48 stations. Installing the 12-station module is as simple as snapping it into place in one of the four module slots inside the ESP-LX Modular's cabinet. The 12-station module can be mixed and matched with the ESP-LX Modular's 4- and 8-station modules to provide the optimum number of zones for any application. After each 12-station module is installed, it provides 12 stations and one common terminal. Once the module is installed, it reflashes the ESP-LX Modular's firmware, providing 12-station compatibility along with other new features including Dynamic Station Numbering and a module status screen under the controller's "Special Feature" dial position.

[www.rainbird.com](http://www.rainbird.com)

## New Specticle herbicide

Specticle®, a new pre-emergent herbicide from Bayer Environmental Science, is for use on warm-season turf. The recommended use rate is 2.5 – 5.0 ounces per acre, depending on the weeds to be controlled and length of control desired. This rate is up to forty times less active ingredient than any other pre-emergent herbicide on the market. The active ingredient is indaziflam, is a cellulose biosynthesis inhibitor. Specticle is formulated as a wettable powder available in pre-measured water soluble packets. For convenience, two package sizes are available: six bottles with eight - 0.625 ounces packets each and four pouches with seven 2.5 ounces packets each.

[www.backedbybayer.com](http://www.backedbybayer.com)

**SPECT(i)CLE™**  
Apply less. Achieve more.

## EPA approves Pasteuria liquid product for turf

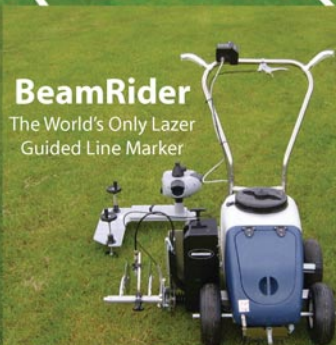
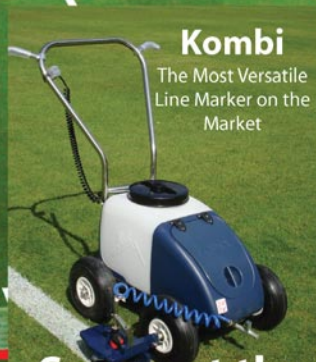
Pasteuria Bioscience received EPA registration for Pasteuria usgae liquid formulation for use against sting nematodes on turf. EPA has also allowed an exemption from the requirement of a tolerance for residues of the biological nematicide, Pasteuria usgae, in or on all food commodities when applied pre-harvest and used as a nematicide in keeping with good agricultural practices. Both of these actions support the use and safety of Pasteuria usgae in nematode control products. With some nematicides being voluntarily removed from the market due to safety and environmental concerns, few nematicides exist to meet the demand. The commercialization of Pasteuria-based products helps address the need for environmentally safe, cost-effective and reliable nematode control products.

[www.pasteuriabio.com](http://www.pasteuriabio.com)



## Fleet US...Line Marking Experts

We manufacture the paint!  
We manufacture the machines!  
We provide the service!  
Call us for all your line marking needs!



**Paints**  
Linestripe - Economy Field Marking Concentrate.  
Fastline - Premium Quality Field Marking Concentrate.  
Superior Line - Ultimate Field Marking Super Concentrate

See us at the STMA, Austin Texas Booth 101

Fleet US, 315 12th Street, Dakota City, NE 68731  
Tel: 402-987-1115 Fax: 402-987-1116 • [www.fleetus.com](http://www.fleetus.com)