

# ONLINE EDUCATION

## SportsTurf MANAGERS ASSOCIATION Online Training

STMA Members - \$30 each  
Non-members - \$50 each

### Session OC01 - Schools K-12

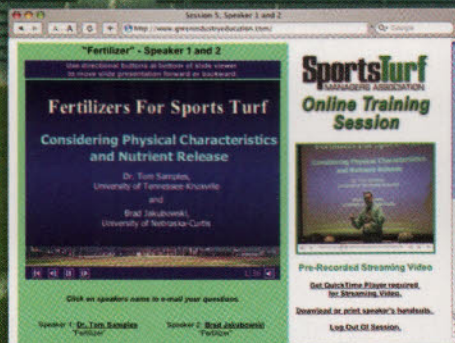
Speaker 1 - Floyd Perry, Grounds Maintenance Services  
Speaker 2 - Dr. Grady Miller, University of Florida  
Speaker 3 - John Mascaro, Turf-Tec International  
Speaker 4 - Dr. John Cisar, University of Florida

### Session OC02 - Parks & Recreation

Speaker 1 - Preston Courtney, Disney Wide World of Sports  
Speaker 2 - Floyd Perry, Grounds Maintenance Services  
Speaker 3 - Bill Berry, City of Rock Hill  
Speaker 4 - Richard Sanger, Sarasota County

### Workshop OC03 - Developing A Master Plan

Speaker 1 - Francois Hebert, Consultant



### Workshop OC04 - Building Athletic Fields

Speaker 1 - Dr. Chuck Darrah, CLC Labs  
Speaker 2 - Boyd R. Montgomery II, The Toro Company  
Speaker 3 - Mark Heinlein, The Motz Group

### Workshop OC05 - Fertilizer

Speaker 1 - Brad Jakubowski, University of Nebraska  
Speaker 2 - Dr. Tom Samples, University of Tennessee

### Demonstration OC06 - Outdoor Demonstrations

Speaker 1 - Dr. Roch Gaussoin  
Speaker 2 - Floyd Perry, Grounds Maintenance Services  
Speaker 3 - Preston Courtney, Disney Wide World of Sports

For STMA Online Training  
information and registration, visit



**GreenIndustryEducation.com**

SportsTurf Managers Association (800) 323-3875

Fill in 142 on reader service form or visit <http://oners.hotims.com/9137-142>

## BECOME A CERTIFIED SUSTAINABLE LANDSCAPER



Visit

**HortiGenomics.com**  
EDUCATION

Deminishing resources and client demands have made Sustainable Landscapes extremely important. This valuable certification is a must for any industry professional.



**GreenIndustryEducation.com**

Your Continuing Education Oasis

877.964.6222

Fill in 141 on reader service form or visit <http://oners.hotims.com/9137-141>

## Minuteman Parker®

**Minuteman Parker's Estate Master®**  
Lawn Sweeper covers a 100 inch sweeping path and has a 51 cubic foot capacity. It easily picks up grass, leaves, twigs and other lawn debris. This model works great on golf courses, athletic fields, parks and other large turf areas.



For more information on the Estate Master or any Minuteman Parker's fine line of outdoor maintenance equipment, please call 800-323-9420 or visit our website at [www.parkersweeper.com](http://www.parkersweeper.com)

See our online product demo at:  
<http://oners.hotims.com/9094-300>

Fill in 144 on reader service form or visit <http://oners.hotims.com/9137-144>

Green TV is brought to you by  
**GreenIndustryEducation.com.**  
Offering the Landscape Industry a  
green news TV show format online!

Episodes are either "Live" or "Pre-Recorded" and archived for easy viewing 24 hours day, 7 days a week, 365 days a year! Episodes will include coverage of industry and associations, tradeshow and conference events, new technology, professional trends, tips and more. Lots of FREE information in FUN and EASY streaming internet video show.



[www.landsnetwork.net](http://www.landsnetwork.net) • [www.green-tv.net](http://www.green-tv.net)

Fill in 143 on reader service form or visit <http://oners.hotims.com/9137-143>