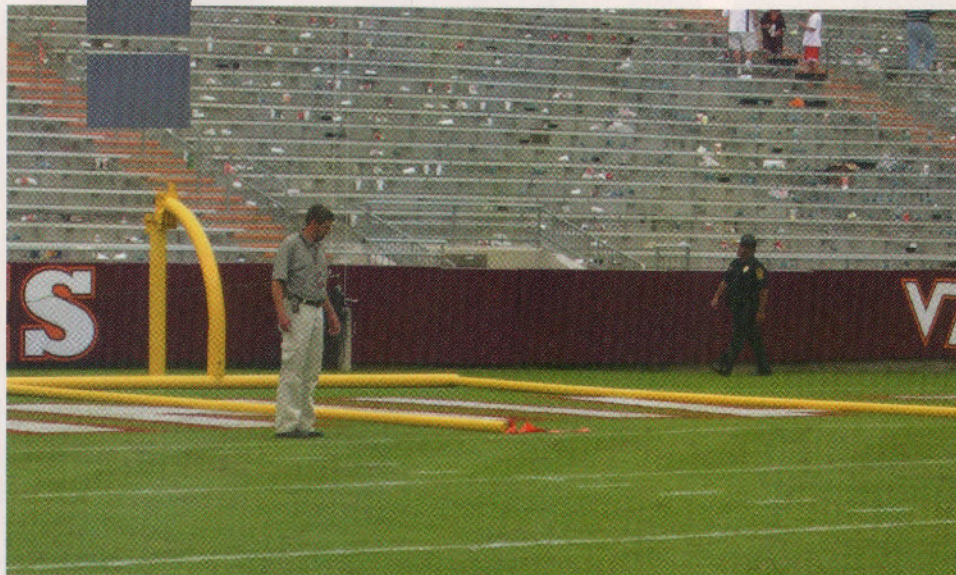




Can you identify this sports turf problem?



Problem: Goalpost on field

Turfgrass Area: Stadium Field

Location: Blacksburg, Virginia

Grass Variety: Bermudagrass overseeded with perennial rye

Answer to John Mascaro's Photo Quiz on Page 36

*John Mascaro is President
of Turf-Tec International*

CONSERVIGATION — COST-EFFECTIVE INSTALLATION, WATER CONSERVATION



Installing Netafim™ USA Dripperline with Vermeer Is as Easy as 1, 2, 3.

The Vermeer® multi-blade plow
allows irrigation contractors to
install dripperline more efficiently

and cost-effectively. Drip irrigation — another cost

saver — reduces water usage
by as much as 30 to 70 percent.

Plus, an extensive distribution
network ensures access to both

Netafim USA products and Vermeer equipment.

For more information, call 1-888-VERMEER,
Netafim USA 1-888-638-2346, or contact your local dealer.



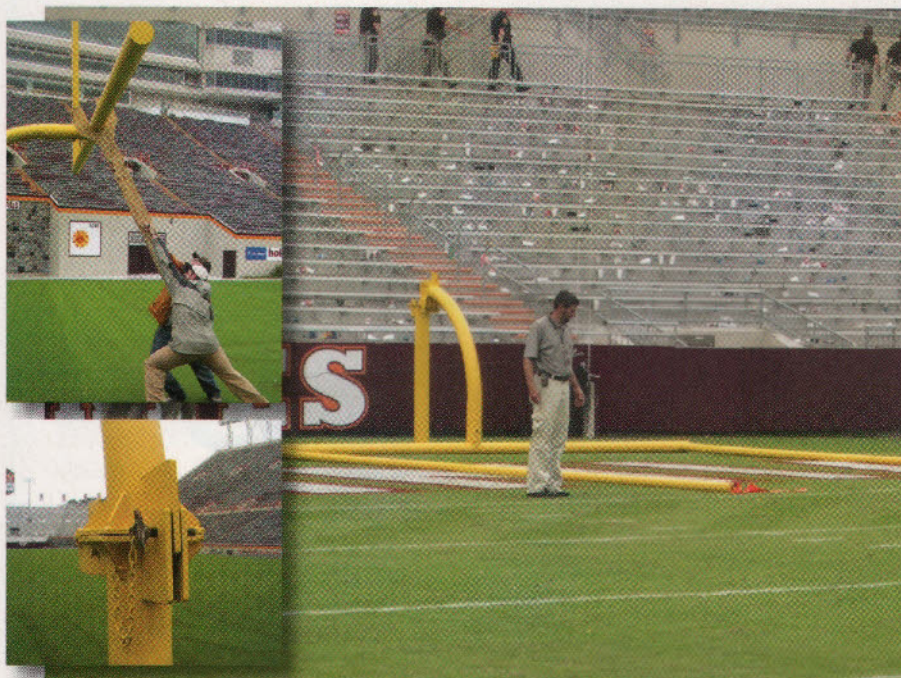
VERMEER and CONSERVIGATION are trademarks of Vermeer Manufacturing Company in the U.S. and/or other countries.
NETAFIM USA is a trademark of Netafim Irrigation Inc.
© 2006 Vermeer Manufacturing Company. All Rights Reserved.

NETAFIM™
www.netafimusa.com

Vermeer®
www.vermeer.com

Fill in 121 on reader service form or visit <http://oners.hotims.com/9140-121>

John Mascaro's Photo Quiz



Answer: from page 23

The goalpost on the stadium field is not really a problem, but an attempt to avoid a problem. Rowdy fans didn't break off the goalpost; the grounds crew has gently lowered it onto the field. Several years ago, the sports turf manager at Virginia Tech was looking for a solution to the goalpost-breaking brigade. He contacted the University of Iowa and they sent him videotape on their system. Virginia Tech then modified the idea of a hinge on the goalpost to quickly allow lowering of the posts (see inset photo). The goalpost is simply held up with a specially designed tool and then the pin is removed from the hinge. The goalpost is then lowered to the turf. The record time at Virginia Tech for lowering the post is four seconds flat. That will stay ahead of most goalpost-breaking brigades.

If you would like to submit a photograph for John Mascaro's Photo Quiz please send it to Turf-Tec International, John Mascaro, 1471 Capital Circle NW, Suite # 13, Tallahassee, FL 32303 or email to john@turf-tec.com. If your photograph is selected, you will receive full credit. All photos submitted become property of SportsTurf Magazine.

Photo submitted by Jason W. Bowers, Sports Turf and Athletic Grounds Manager at Virginia Tech in Blacksburg, VA. ■



TOPDRAIN - Silt drainage made easy
• Three (3) sand filled trenches, 1.5" w x 8" d at 20" oc.



RECYCLING DRESSER - aerate 7" deep
• Topdress your own root zone in one pass, no more plugs!



FIELD TOPMAKER - strip turf, mulch & load in one pass

NEW! VERTICUT REEL AVAILABLE

KORO

BRILLIANT INNOVATION
BUILT "SPORT" TOUGH

SALES & CONTRACT SERVICES

North American Distributor
GreenONE Industries

888-KOROUSIA (567-6872)
www.korosystems.com

REVOLUTIONIZING THE SPORTS TURF INDUSTRY

Dealership opportunities



WANT TO REACH QUALIFIED BUYERS?

- TARGETED LEADS
- SUPERIOR PENETRATION
- PROVEN VALUE
- OUTSTANDING RESULTS

M2MEDIA 360

LIST RENTAL

Then rent our list of targeted, qualified readers for your next direct mail promotion.

Call today for more information regarding our product lines and extensive database marketing programs.

Cheryl Naughton
cnaughton@m2media360.com
 770/995-4964
 Fax: 770/995-4983

Fill in 134 on reader service form or visit <http://oners.hotims.com/9140-134>