

Can you identify this sports turf problem?



Problem: Wet turf
Turfgrass Area: Stadium Field
Location: Davenport, IA
Grass Variety: Ryegrass/Bluegrass

**Answer to
 John Mascaro's Photo
 Quiz on Page 45**
*John Mascaro is President
 of Turf-Tec International*

MAKE THE SWITCH TO RED DIAMOND CONDITIONERS



THE NEW STANDARD IN NATURAL INFIELD CONDITIONERS!

- Promotes Safety
- Professionally Sized Conditioners
- Provides Superior Moisture Management
- Enhances Surface Coloration
- Assist In Proper Field Drainage
- Reduces Rain Delays and Eliminates Rainouts
- 100% Natural Earth Product.



**Mike Bookholder: Head Groundskeeper
 Philadelphia Phillies - Citizens Bank Park**

"Red Diamond™ is a top quality conditioner. It is very durable and does not break down nearly as fast as other calcined clays that I have used."



**Joe Kennedy III: Baseball Maintenance Manager
 Surprise Sports Complex - Surprise, AZ
 2005-2006 STMA Complex of the Year**

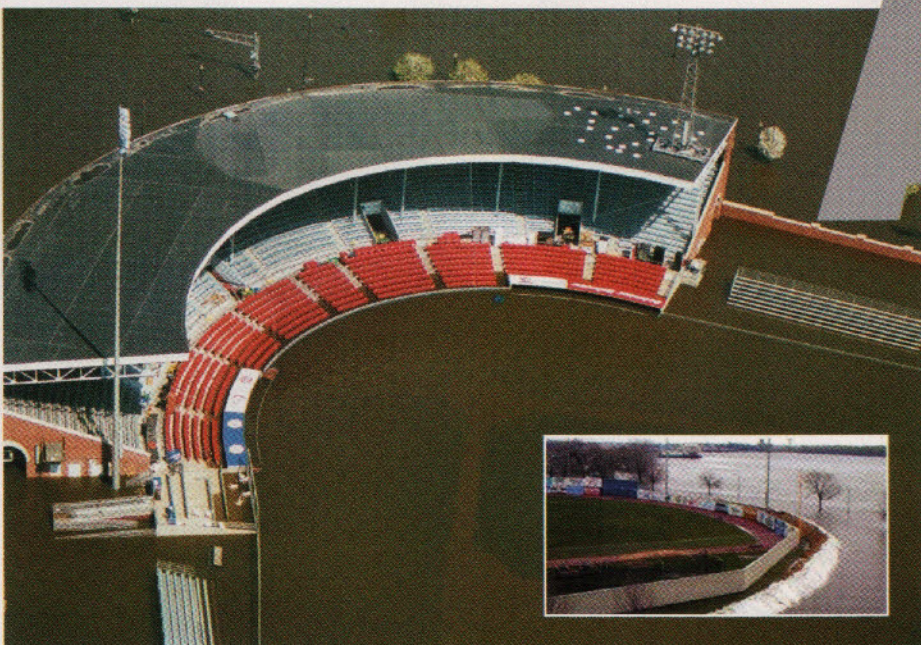
"Red Diamond™ conditioners have proven to be an excellent conditioner. Its consistency and absorption are equal to other conditioners."

**QUANTUM
 TURF TECHNOLOGIES**
 Toll Free (800) 264-5828 • www.moltan.com

Fill in 119 on reader service form or visit www.oners.ims.ca/5906-119

John Mascaro's Photo Quiz

Answer: from page 19



Photos courtesy of the Iowa Corps of Engineers.

If you would like to submit a photograph for John Mascaro's Photo Quiz please send it to John Mascaro, 3669 NW 124th Avenue, Coral Springs, FL 33065 or email to john@turf-tec.com. If your photograph is selected, you will receive full credit. All photos submitted will become property of SportsTurf magazine.

The wet turf is a result of the Mississippi River flood of 2001. John O'Donnell Stadium is one of the most scenic ballparks in the country, located right next to the Mississippi River in Davenport, IA. However, with the beauty of the river also comes the real danger of flooding. The stadium has been flooded quite a few times since its construction in 1931 with the most recent flooding occurring in 1965, 1993 and 2001. These latest photos are from 2001 when the city built a sandbag wall totally encircling the stadium (see inset photo); however the river overtook the sandbags as it crested. In 2004, there were many improvements made to the facility including a new concourse, clubhouses, food service site, seating and picnic areas. The innovative plan also included an earthen berm that encircles the entire outfield offering flood protection as well as creating a grassy, park-like seating area. ■

Shop Our...



[www.thebook-store.com/
greenmedia](http://www.thebook-store.com/greenmedia)

**Shop Thousands of
Green Industry
Titles**

Deep Discounts on New Releases
Bestsellers, Bargain Buys and
Much More!

THE GAME MUST GO ON.

An Airfield is the ultimate sports turf drainage system whether you are playing on natural or artificial turf.

Artificial Turf Benefits:

- Drains remarkably faster
- Reduces installation time
- Reduces G-Max
- Eliminates rubber migration
- Eliminates standing water
- Strong enough for vehicles
- Below entire playing surface
- Air void for heating and cooling
- Allows flushing and sanitizing
- Maintains level playing surface

Natural Turf Benefits:

- Drains remarkably faster
- Reduces installation time
- Reduces irrigation requirements
- Extends playing season
- Eliminates standing water
- Reduces maintenance costs
- Below entire playing surface
- Superior perched water table
- Greater root mass
- Gas circulation through soil



405.359.3775
airfieldsystems.com

Fill in 137 on reader service form or visit www.oners.ims.ca/5906-137