

chapter news

Chapter, visit their website at www.mistma.org or contact Chad Follis at 269/377-3340 or 269/381-0596 or by email at chadfollis@farmngarden.com.

Minnesota Chapter STMA: The MSTMA held their Summer Tour on wheels July 27. 52 members attended, the largest group ever for an MSTMA event. Look for upcoming information on our Fall Workshop to be held in the City of Prior Lake on October 5. Also look for upcoming information on the Community Service project to be held mid-September. For information visit the Chapter website at www.mstma.org or contact chapter President Greg Hoag at 651/486-8295 or by email at greg.hoag@metro-inet.us.

MO-KAN Sports Turf Managers Association: For information on the Chapter or upcoming events, contact Paul Hecker at 913/971-9717 or email phecker@olatheks.org.

New England STMA (NESTMA): NESTMA announces the 2005 Mruk scholarship award winners: Nathan Salmore, Kyle Walsh, and Andrew Walsh, all who attend the University of Massachusetts; and Adam Holligan who attends The State University of New York at Cobleskill. The scholarships recognize Charles Mruk, a field agronomist who is a strong advocate of education, for his dedication to the turf industry. For information on the New England chapter or other upcoming events, contact David Pinsonneault at 781/861-2757 or dpinson@ci.lexington.ma.us.

Nebraska Sports Turf Managers Association: For information on the Chapter or upcoming events, call Loren Humphrey at: 402/461-2356 or e-mail to lhumphrey@cityofhastings.org.

Sports Field Managers Association of New Jersey: For information on the New Jersey Chapter or upcoming events call SFMANJ at 908/730-7770, e-mail HQ@sfmanj.org or visit the Chapter website at www.sfmanj.org.

Ohio Sports Turf Managers Association (OSTMA): OSTMA will have its annual Fall Field Day at the Ohio State University Intramural Fields September 13. This is a vendor showcase that provides attendees the opportunity to operate a large range of turfgrass maintenance products on the fields at beautiful Beekman Park. There will be ODA credits available for some talks. We would also like to welcome aboard our new Executive Secretary, Cindy Vaughn. For more information, you can email us at ostma@aol.com or call us at 888/824-9805. You can also contact the Chapter President, Brian Gimbel, at 614/292-9450 or gimbel.1@osu.edu.

Pacific Northwest Sports Turf Managers Association: For information on the Chapter or upcoming events, contact Bob Christofferson at 206/346-4218 or bchristo@mariners.org.

Southern California Chapter: For information on the Southern California Chapter or pending activities, call the Chapter Hotline at 888/578-STMA (578-7862) toll free in Southern California or 760/226-8873 or Michael Tarantino at 858/679-2526 or by e-mail: MTarantino@powayusd.com.

South Carolina Chapter of STMA: The 2005 Clemson University Turfgrass Field Day will be held from 8 AM-noon on September 13 at the Pee Dee Research and Education Center in Florence. The field day will be followed by lunch and then at 1:30 PM by the Charles P. Willimon, Sr. Golf Tournament at Florence Country Club.

Registration information, including travel directions, can be obtained at under 2005 Turfgrass Field Day or from Sam Cheatham at 803/957-0616 or scturfgrassfoundation@alltel.net or Jim Camberato at 843/669-1912 ext. 226 or jcmbrt@clermson.edu. For the golf tournament please check the website, or call Sam Cheatham or Hank Kerfoot at 803/713-8873 or by email at hank@modernturf.com. For more information contact Trent Hale at 843/662-3526 ext. 206 or by e-mail at tchale@clermson.edu for more information or visit www.sctstma.org.

Texas Sports Turf Managers Association: TXSTMA will be holding an Educational Field Day event in the DFW area in October as well as the Annual Scholarship Golf Tournament. Watch for more information in the mail. For information call 866/897-8621 or T.J. Thompson, President-Elect at 972/670-2138 or by email at TXturfmanager@prodi-gy.net.

Tennessee Valley Sports Turf Managers Association (TVSTMA): The chapter will be holding the West Tennessee Field Day at the University of Tennessee at Martin September 9. For more information visit the Chapter's website at www.tvstma.org or call Chapter President, Chris Pearl at 615/242-4371.

Virginia Sports Turf Managers Association: The VSTMA will participate in and support the Virginia Turfgrass Council/Virginia Tech Field Days in Blacksburg September 13-14 and will also participate in and support the Virginia Turfgrass Council Sports Turf Short Course in Blacksburg December 5-8. For more information please contact VSTMA President Bob Studholme of the Fairfax County Park Authority at 703/324-8590 or robert.studholme@fairfaxcounty.gov.

Wisconsin Sports Turf Managers Association: For information on the Wisconsin Chapter or other pending events, contact Chris Brindley at 715/346-3622 or cbrindle@uwsp.edu.

Forming Chapters:

North Florida STMA Chapter: For information on the newly forming North Florida Chapter, contact Mark Clay at 904/633-6116 or Jay McCord at 904/448-2583.

New York Sports Turf Managers Association: Contact - Mike Albino by phone at 315/468-6225 or (c) 315/427-1214 or email him at mikealbino@earthlink.net.

Idaho STMA: For information, contact Greg Liggett, at 208/496-2421 or email him at liggett@byu.i.edu.

MARKETPLACE

Got Thatch?



GET A THATCH MASTER

60"/72" (Fairways/Athletic Fields)

Turf Specialties, Inc.
800-201-1031

www.turfspecialties.net

NEW PRODUCTS!

Manufactured By:





- 100% Natural Product
- Dark Red with No Dye added!
- Higher Absorption = Improved Moisture Management



Toll Free (800) 264-5826 • WWW.MOLTAN.COM

Circle 177 on card or www.oners.ims.ca/5064-177

**One Field
One Line of
Products**



by WESSCO, Inc.

A New Foundation for Sports



**For Your Nearest Distributor
WESSCO, INC. 800-650-9322
WWW.KLAWOG-KLACON.COM**

Circle 170 on card or www.oners.ims.ca/5064-170



Durability, Power, and Comfort
Shindaiwa trimmers, designed and built with the landscape professional in mind

- Quality two-ring piston and chrome plated cylinder for maximum durability
- Solid steel drive shaft
- Electronic ignition for fast, easy starts
- Anti-vibration system reduces operator fatigue
- Heavy-duty gearcase design
- Lifetime warranty on drive shaft and electronic components

shindaiwa

FIRST TO START. LAST TO QUIT.

To find a dealer nearest you, call (800) 521-7733, or visit www.shindaiwa.com

Circle 171 on card or www.oners.ims.ca/5064-171

**Minuteman[®]
Parker[®]**

Minuteman Parker's Estate Master[®] Lawn Sweeper covers a 100 inch sweeping path and has a 51 cubic foot capacity. It easily picks up grass, leaves, twigs and other lawn debris. This model works great on golf courses, athletic fields, parks and other large turf areas.



For more information on the Estate Master or any Minuteman Parker's fine line of outdoor maintenance equipment, please call 800-323-9420 or visit our website at www.parkersweeper.com

Circle 172 on card or www.oners.ims.ca/5064-172

**Supreme-Green[™]
Turf Growth Cover**

Supreme-Green is a multi-purpose turf growth cover made of a specially designed material to provide early green-up, accelerated germination and winter protection. The Supreme-Green cover encourages root development and rapid growth while extending your spring and fall seasons.

Supreme-Green turf growth cover is specifically engineered to promote earlier openings by 2-3 weeks.



Specifications:

- Made of tough woven non-coated polyethylene material
- UV treated for long life
- Green tint for best heat build-up
- One piece construction
- Comes complete with anchor pegs and storage bag

- Reduces seed loss
- Promotes earlier root establishment
- Accelerates Germination
- Reduces frost and ice-damage
- Porous to allow water and air circulation
- Mildew and rot resistant
- Quick turf repairs

279 Humberline Dr. Etobicoke, Ontario M9W 5T6
Phone: 1-800-837-8961
Fax: (416) 798-1342
E-mail: sales@covertechfab.com
Website: www.covertechfab.com



Circle 182 on card or www.oners.ims.ca/5064-182

<http://www.sportsturfmanager.org> • STMA

LINEUP
Hash-Mark Painting System

- Made of lightweight aluminum & FOLDABLE.
- Self-aligning, 5 yard units.



Alumanumber

- 4x6 in size, made of 1/8" aluminum
- Offsets built-in for quick alignment
- Three font types available

**The Only Painting System
You'll Ever Need.**

888-780-4441

DSS

Diversified Sports Specialties
www.DSSworks.com

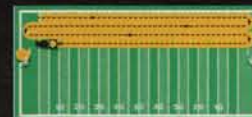
Circle 173 on card or www.oners.ims.ca/5064-173

**YOUR ULTIMATE SPORTS
TURF TOP DRESSER**



**The Mete-R-Matic[®] XL makes
top dressing simple and fast.**

The Mete-R-Matic XL is specifically designed for sports turf. Our patented chevron belt allows you to accurately and evenly distribute material, regardless of moisture content. The ground drive system assures that material will be spread evenly, regardless of vehicle speed. And the XL features a 2.25 cubic yard hopper, so you get the job done fast.



The larger hopper allows the XL to make four full passes (up and down) across a football field.

For more information, call 1-800-679-8201.

TURFCO

THE LEADER. SINCE 1961.

1655 101st Avenue NE • Minneapolis, MN 55449-4420 U.S.A.
(763) 785-1000 • Fax (763) 785-0556 • www.turfc.com

Circle 174 on card or www.oners.ims.ca/5064-174

GBS 1200 VERTICUTTER



belt driven both sides
offset mounting
48" cutting width

graden usa inc
7309 capehart road
richmond, va 23294
ph: 804 249 9950
fx: 804 249 9951
em: michael@gradenusa.com

CALL FOR YOUR FREE DEMO!

GRADEN
www.gradenusa.com

Circle 175 on card or www.oners.ims.ca/5064-175

Call for approved dealers in your area.



Stabilizer The Standard Worldwide

Our patented process is the standard for durable, all weather, crushed stone playing surfaces, pathways, parking, fire lanes and event staging areas.

www.StabilizerSolutions.com
www.BallyardProducts.com



Hilltopper® Waterless & Dustless

The top performer in Softball infields, Baseball mounds, home plate areas and warning tracks. Improve play without water and extensive rework labor. Fast rain recovery, just brush it dry.

Stabilizer Solutions, Inc.
33 South 28th Street
Phoenix, Arizona 85034 USA
info@stabilizersolutions.com

USA toll free 800.336-2468
In ARIZONA tel 602.225-5900
fax 602.225-5902

Circle 176 on card or www.oners.ims.ca/5064-176

A Multi-Flow drainage system can control the water in any application.



- extremely cost effective
- less hassle to install
- higher performance

Complimentary design & project assistance



Multi-FLOW
drainage systems

Varicore Technologies, Inc. 800.978.8007
www.varicore.com

Circle 183 on card or www.oners.ims.ca/5064-183



MAINTAIN THE DREAM

What Makes Great Teams?

They Have:
Spirit - Strength - Endurance - Technique

They Need:
Coaching - Equipment - A Perfect Field

You Need: **KROMER**
Call or visit our website today to learn how Kromer is your winning edge for athletic field maintenance equipment.

1-800-373-0337
www.kromerco.com

FREE PAINT GUN WITH QUALIFYING PURCHASE



The B200 - Simply the best "all in one" Athletic Field Maintainer, ever!

The KROMER'S great design, durable construction and extremely low maintenance has proven to be one of our best purchases....

Robert Hudzik
Stadium & Athletic Field Supervisor
Penn State University, PA

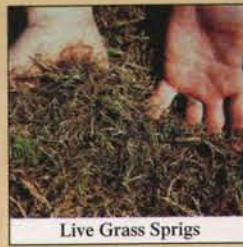
Our Field is Preparing Your Field

Circle 178 on card or www.oners.ims.ca/5064-178

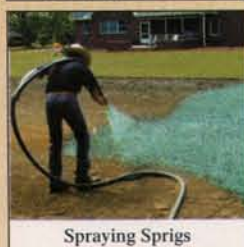
Hydro-Sprigging for Sod Quality Results



Model 430 on Trailer



Live Grass Sprigs



Spraying Sprigs



Sod Quality Results

TurfMaker®

TurfMaker® introduces the 430 Hydro-Sprigger. Affordable, practical, and easy to use. Hydro-sprigging of vegetative varieties can provide total grow-in in less than 30 days. This miniature hydro-mulching machine is ideal for planting small areas, or for serious hydro-sprigging projects of up to 4,000 square feet per hour. It is also capable of producing premium hydro-mulching applications of 8,000 square feet per hour.

turfmaker.com 800-551-2304

Circle 179 on card or www.oners.ims.ca/5064-179

THE MULTISEEDER



DEEP SEEDED RESULTS

RESHAPING THE FACE OF NATURE

BLEC
USA, INC.

864.225.3666 • www.blecusa.com

Circle 180 on card or www.oners.ims.ca/5064-180

G-SPEC U.S. FLAGS

ARMY
NAVY
AIR FORCE
MARINES
YOUR PARK



ApexFlags.com

Circle 091 on card or www.oners.ims.ca/5064-091

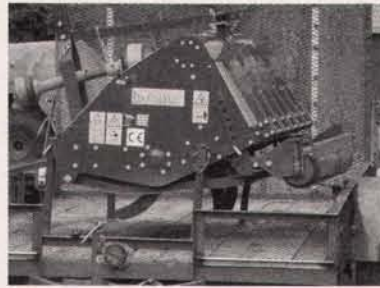
CLASSIFIED ADVERTISING WORKS!

ADVERTISE YOUR SERVICES • ADVERTISE YOUR PRODUCTS
SELL YOUR BUSINESS • FIND QUALIFIED EMPLOYEES
SELL YOUR USED EQUIPMENT • ADVERTISE A SALE
ADVERTISE YOUR WEBSITE

We have many advertising options at affordable rates and FREE online advertising!!

Call Tonya today to reserve your ad space!

630-679-2061



FOR SALE:

**Imants earthquake Model EQ150R -
The most efficient aerator in the world!**

- Perfect for Sport fields and Golf Courses with NO Disruption of Play
- Deep soil decompactor for sport turf. Coulter knives for open slices to top dress or roller for no disturbance finish.
- Full decompaction - soil displaced by the blades, combined with the forward speed, sets up a wave action, thus shattering the soil laterally and decompacting consistently from the surface to full working depth without surface damage.
- 5 feet wide, 3 point hitch, 1200 lbs 35+ PTO horsepower. Loosens soil to 10 inch depth
- Near NEW condition - Sold new for \$14,000 - Less than 90 hours total running time.

Located in York, Pennsylvania. (Delivery available for extra charge)

Asking \$9,800 OBO (Trailer NOT included)

Call Jerry at **(717) 324-2791**

Circle 092 on card or www.oners.ims.ca/5064-092

TERRA SPIKES AND MORE

Nation's #1 Distributor has trade-in's and demo's for greens, tees, fairways and sportsfields

NATIONAL MOWER

TURFCO

MASSEY FERGUSON

Wiedemann

U'03	G66/160 TERRA SPIKE 63" W/W, 0-12" DEPTH	— \$9,995
U'99	305.200 VERTI-DRAIN 80" W/W, 0-16" DEPTH	— \$5,995
U'97	305.200 VERTI-DRAIN 80" W/W, 0-16" DEPTH	— \$3,495
U'02	MF1440 4 W/D, 40 HP, T/TIRES, 575 HRS	— \$13,800
D'03	NATIONAL 8400 TRIPLEX REEL MOWER, 16 H.P.	— \$11,200
U'00	1260 MF Tractor 4 W/D, 40 h.p. WT/Tires	— \$8,500
U'00	7526H Verti-Drain, 104" W/W 0-16" Depth	— \$10,500
U'02	Verti Seed Slit Seeder, 54" W/W Model 1204	— \$4,000
D'05	XF 20/6 Terra Spike 63" W/W 0-9" Depth	— \$25,000

COMMERCIAL TURF & TRACTOR 800-748-7497
www.commercialturfandtractor.com



HOME OF BRYANS BLEND BBQ SAUCE
www.bryansblend.com

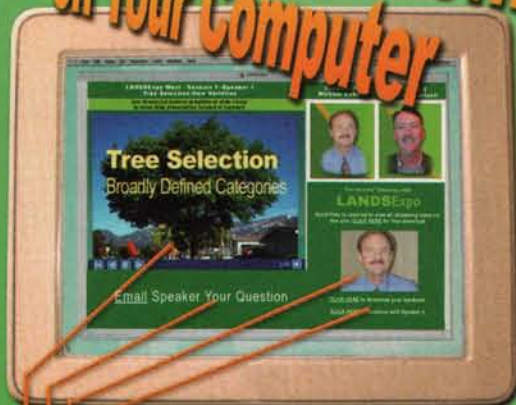
Circle 093 on card or www.oners.ims.ca/5064-093

Online Continuing Education 24, 7, 365

Online Conference and Exhibits

Available 24 Hours a Day, 7 Days a Week,
365 Days a Year for Busy Landscape Professionals

Get CEUs at Home or Office
on Your Computer



It's Easy!

- Downloadable Handouts
- See/Hear Speaker
- Ask Speaker Questions
- You Control PowerPoint

Pre-recorded sessions focus on Arboriculture, Golf, Irrigation, Landscape, Park & Rec, and Sports Turf.

- LE01 - Tree Selection: New Varieties
Full Session (\$20/\$30)
- LE02 - Pesticides on Turfgrass
Full Session (\$20/\$30)
- LE03 - Accessing Plant Stress
Full Session (\$20/\$30)
- LE04 - Irrigation Design
Full Session (\$20)
- LE05 - Tree Health
Full Session (\$20/\$30)
- LE06 - Turfgrass Selection
Full Session (\$20/\$30)
- LE07 - Soil Issues
Full Session (\$20/\$30)
- LE08 - Irrigation Efficiency
Full Session (\$20)
- LE09 - Pros/Cons of Micro-Injections
Full Session (\$20/\$30)
- LE10 - Evaluating and Amending Soil
Full Session (\$20/\$30)
- LE11 - Soil Erosion Control
Full Session (\$20/\$30)
- LE12 - Accessing Plant Stress
Speaker Presentation (\$10)

GreenIndustry
Education.com
LandsExpo.com
877-964-6222

LANDSExpo
OnlineClassroom

Registration Fees

Speaker Presentation
Up to One Hour
No Accreditation

\$10.00

Full Session
Up to Two Hours
No Accreditation

\$20.00

Full Session
Up to Two Hours
Apply For Accreditation*

\$30.00

*Full Session Approved
Accreditation Available
at www.LandsExpo.com

Online Exhibits

FREE

Circle 169 on card or www.oners.ims.ca/5064-169