

Have you changed your filters lately?

BY TONY STRICKLAND, CSFM

Common sense tells us that changing filters is important. Consider, for example, the oil and fuel filters of the engines we use to perform work that determines how we are looked at professionally. Would any of you consider reusing the old filters? I have been told that using the old filters leaves the dirtiest

material in the system which will, with time, clog the filters to the point they cease to function.

No, this is not another equipment maintenance checklist (nor is it a recommendation to check the filters of your lives although it is wise to do so periodically.) This is about the use of "Filter Fabric" and "Socked Pipe" in athletic field construction.

"Filter fabric" filters the water that is to flow into the pipes under it or adjacent to it and the sock on the "Socked pipe" is used similarly. How can we allow a filtration system that cannot be changed economically to be installed at the showplaces of our profession? This is a great characteristic if you want to prevent the subsurface from mixing with the soil profile!

Let's face it, filters do and will clog and if by its own definition filter fabric does its job, which I don't doubt, how many filtration processes can they perform before they become impervious to even the smallest molecule? Even with the most pristine conditions with the best engineering and using USGA approved sands, the installation process of these systems will generate some amount of fines that will be filtered out of the water to prevent the pipes from clogging. Now, take in account the activity of the sport on the field, the cultural practices of the sports field manager, aeration produces fines, traffic of any kind produces fines, organics

from the roots produces fines and some fines come from fertilizers. Granted some of these are minute particles and some may pass through the fabric but how long does it take before the smallest particles start to bridge across the pores in the fabric?

I have personally experienced this problem. One morning, I walked out on the field at a minor league facility. Though it had not rained in 24 hours, there was an 8-12 inch layer of water covering the most of the outfield and very little water

coming out the out-fall of the drain pipe. This didn't make sense.

"They" (the local municipality) said the field was just three months old and had been constructed in-house using the labor of prisoners from the local jail. They reported the field had subsurface drainage and a sand base profile from a reputable local source. I asked the engineers who had surveyed and managed the installation of the sub-surface drainage system to come onsite to locate the drain lines for inspection. We not only found the sand to be improper but the pipes also had a "sock" on them. After the engineers and I observed the separation and sedimentation of the sand layer, which created a gunky thick ooze at the transition from sand to gravel and restricted the rapid percolation as you would hope for, we also

noticed no water movement into the gravel surrounding the socked pipe. I then scratched through the gravel to find the pipe, still no water movement; I then decided to cut the fabric and only then did the water create a vortex that would be the envy of the "Tidy Bowl Man."

My crew and I spent the rest of that season removing the twenty or more drain plugs across the field after every rain just to get the water off the field, not to mention chasing the waterfowl off. We still lost 14 home games that year while the sun



"WE HAD FANS THAT WOULD STILL COME TO THE GAMES ASKING IF THEY COULD USE THE DUGOUTS FOR BLINDS WHEN HUNTING SEASON OPENED."

was shining. We had fans that would still come to the games asking if they could use the dugouts for blinds when hunting season opened. This did not suit our owners too well and after an extended court battle, the jury agreed with us and not only requested the property owners to pay restitution but also ordered them to rebuild the field with an outside engineering firm and contractor.

The main reasons for this field's subsurface drainage system failure, as determined by engineers and consultants that were brought to the witness stand, was the sock on the pipe and the soils used for the root zone. The fabric had done its job by filtering the water to such an extent that the pores of the fabric had bridged over. How can this happen? The soil that was supposed to be the sand for this "sand based" field had over 30% silt and clay and over 20% organics that means over 50% of the soil was not sand. In addition there was no way to change this filtering system without digging up the field.

Water management is one of the most essential requirements of any sports field. Without it we lose turf areas, games, maintenance time, and cultural practice time. To help insure the integrity of your sports field get involved with the pro-



ject in the design phase, make sure the products specified have the field's performance in mind and have been thoroughly and adequately tested or analyzed for compatibility.

If we as field managers would get with those who are engineering and designing our fields before the plans are released and try to figure out the best scenario for our specific sites then we will be able to do the best possible job for the money we can. This is something any sports field

professional should be aware of as our field of dreams is being built. Always ask questions, know your products and contractors, and let's keep the filters of our world where we can economically change them. **ST**

Tony L. Strickland, CSFM, is president of Athletic Construction, Inc., which builds athletic fields. He is the Vice-President and Board member of Northeast Georgia Landscape and Turf Association. He can be reached at tstrickland@charter.net.

REMOVABLE PAINT FOR SYNTHETIC AND GRASS FIELDS



TEMP-LINE



Now you can add or remove football, soccer or lacrosse lines and logos to meet all your event needs.



NFL Approved Vendor

Call (800) 677-7930 for a free sample kit

www.ecochemical.com

K-RAIN PRODUCT GUIDE

K-Rain Manufacturing has released its 2005 Product Guide. The 44-page, color catalog includes descriptions, specifications, features and benefits for K-Rain's entire line of gear driven rotors, sprays, controllers and valves.

The catalog features several new products, including Narrow Profile Sprays/KVF Adjustable Nozzles and PRO COM Rotor with Flow Shut-Off.

K-Rain Manufacturing/561-844-1002

For information, circle 055 or

see <http://www.oners.ims.ca/4572-055>

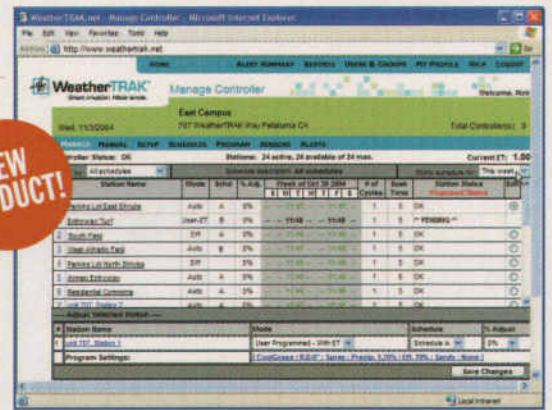
IRRIGATION MANAGEMENT

HydroPoint Data Systems has introduced WeatherTRAK ET pro irrigation controller and WeatherTRAK.net Internet management service. The latter enables central online management of WeatherTRAK ET pro controllers. From any location with Internet access, you log in to the secure site to gain a central view of all ET pro controllers under your management. Via two-way wireless communication, WeatherTRAK customers receive real-time controller status readings and adjust the irrigation programs of single controllers or groups of controllers.

HydroPoint Data Systems/800-362-8774

For information, circle 057 or

see <http://www.oners.ims.ca/4572-057>



NEW PRODUCT!

ON-LINE IRRIGATION TRAINING

The Toro Co.'s National Support Network technical support service has expanded its irrigation-training curriculum to include live, interactive sessions via the Web. The short, instructor-led sessions allow learners to master skills using a local internet-connected PC without incurring the expense associated with time and travel away from work.

The company says Web-based training offers a way to affordably accelerate the learning of new hires; expand the skills of existing workers; cross-train work groups; and retain good employees.

The Toro Company/888-676-8676

For information, circle 054 or

see <http://www.oners.ims.ca/4572-054>

Got Thatch?



GET A THATCH MASTER VERTI-CUT
Either 60" or 72" working width

Turf Specialties, Inc.

800-201-1031

call for price, info or demo

SPRINKLER HEAD

The Orbit Professional 5500 Series Pop-up gear drive head has a pop-up height of 4 in. and includes a large removable filter that resists clogging. This sprinkler head is for medium to large areas, easily adjusting for a coverage radius of from 40 to 360 degrees, and a distance of from 20-40 ft.

Orbit Irrigation/800-488-6156

For information, circle 058 or

see <http://www.oners.ims.ca/4572-058>



RAIN BIRD MID-RANGE ROTOR

Rain Bird's new 5004-UPG rotor allows you to retrofit competitors' mid-range rotors without the time-consuming cost of dig-

ging up the entire rotor. This rotor features exclusive Rain Curtain technology for better water distribution and overall performance. When put through the Grit Cycle Test to measure its robustness when operating with gritty water, Rain Bird's 5000 Series lasted 1.7 times longer than the competition, the company says.

Rain Bird/800-984-2255

For information, circle 056 or

see <http://www.oners.ims.ca/4572-056>

NEW
PRODUCT!

"WEATHERSENTRY"

Meteorlogix has released the latest version of MxVision WeatherSentry Turf Edition that introduces new technology designed to assist with chemical applications, crew scheduling, course maintenance, and employee safety. The exclusive Future Radar capability enhances existing real-time radar information by offering a look into the future, detailing where dangerous storms will go and what the anticipated arrival time is and when they are likely to impact spraying or mowing.

DTN/Meteorlogix/952-882-4337

For information, circle 059 or

see <http://www.oners.ims.ca/4572-059>

NEW
PRODUCT!

GN-1™

Patented








Hybrid Bermuda

a product of Greg Norman Turf Company.

Is your turf as tough as your team?

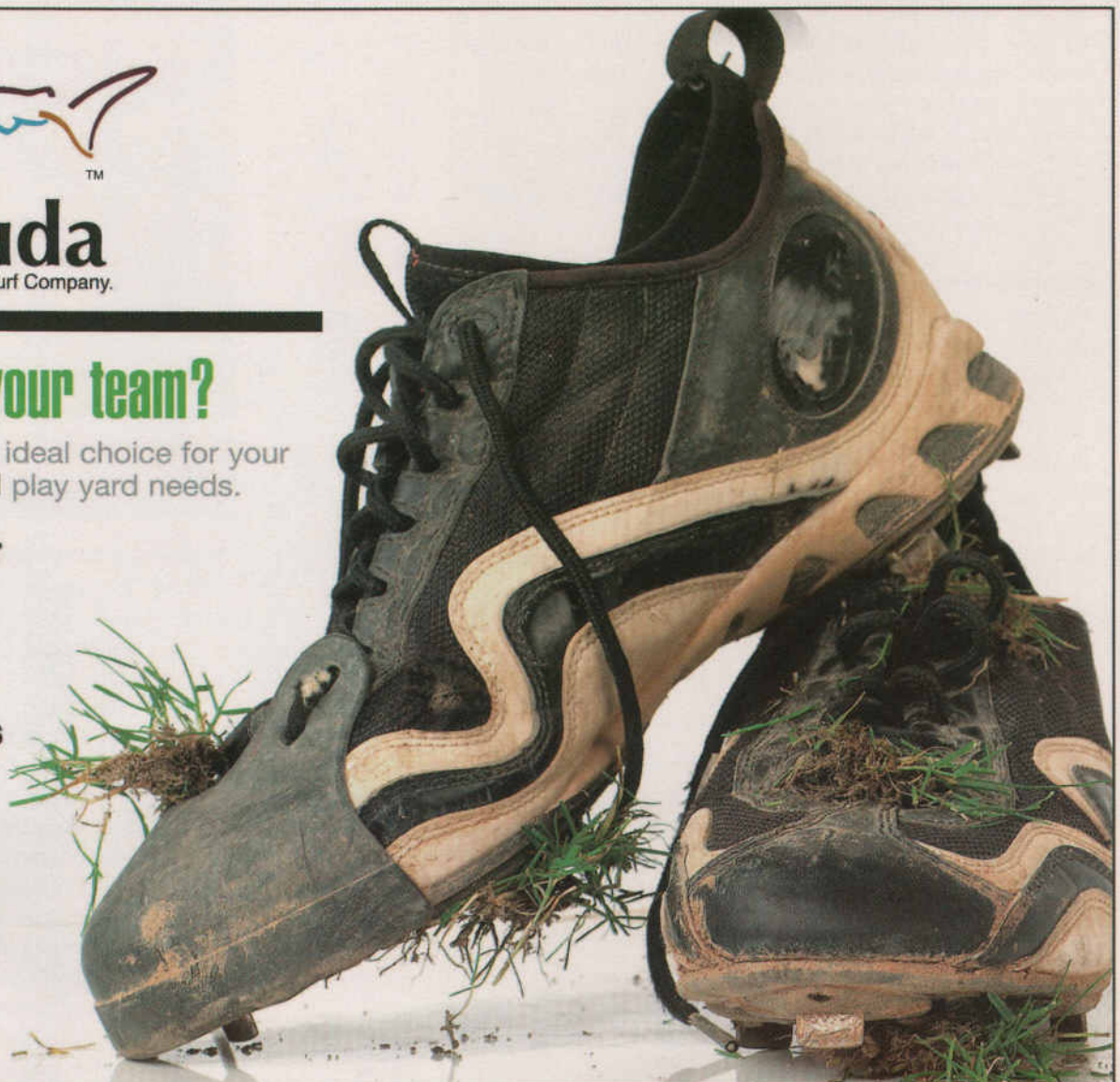
GN-1 patented hybrid bermuda is the ideal choice for your athletic field, golf course or residential play yard needs.

-  Exceptional dark green color
-  Excellent wear recovery
-  Good cold tolerance
-  Tolerant of high salinity soils
-  Lower maintenance costs

 **Pacific Sod**
The Professional's Choice

800 942-5296

www.PacificSod.com



Circle 163 on card or www.oners.ims.ca/4572-163