

BY JIM ROCHE

# It's time for the parade



In researching this article, I went to the Bureau of Labor Statistics to find out how many turf technicians are employed in the sports turf industry. Guess what? The Bureau of Labor Statistics doesn't even know you exist! There was a category for "golf" but it mainly dealt with architecture and athletes. There was no listing for turf maintenance specialists or anything to do with turf other than the category of "small engine mechanic," which was linked with motorcycles and marine mechanics. Yikes!

If no one is looking at the existence of turf technicians as a profession unto itself, how is any manager going to figure out what his needs are, what he should pay someone to do this job, and what this technician's qualifications should be? Turf equipment uses both gasoline and diesel engines, and the government lists diesel equipment separately with heavy equipment like backhoes, etc. The question is, then, how can we address the turf technician's issues when the United States government doesn't even recognize them as a distinct group?

Let's take golf courses as an example. According to the National Golf Foundation's most recent figures, there are 15,899 golf courses in the United States. On average, each employs 2.5 technicians. This tells us that there are more than 39,000 technicians keeping the turf equipment running properly. Now let's add in college athletic fields, professional sports fields in football, baseball, soccer, polo, and other sports. Let's add in community and park district fields. The number could well surpass 75,000 technicians working in the turf industry. That's not including the technicians that work at dealerships that repair equipment.

Now that we have some idea of the number of technicians, we can look at several areas to get a better understanding of this most elusive worker. Talk to any of the 15,000+ golf course superintendents and ask them if they have a problem finding qualified people. The answer is yes, they do have a problem. There are only a handful of schools that train turf technicians. And those schools are having trouble filling their programs.

Here is a career opportunity for thousands of young people. The training exists, the jobs exist, but the students aren't enrolling. Why? Because they don't even know this profession exists. And neither does Uncle Sam. It's time to step out of the club-

house and into the classroom.

The Equipment & Engine Training Council (EETC) has been aware of this shortage on the dealership level of power equipment repair. The EETC wrote a book to assist dealers find qualified service technicians that the turf industry may want to read because it contains practical solutions to help employers find and keep good employees. Go to [www.eetc.org](http://www.eetc.org) for more information. There is also a list of EETC accredited schools that teach power equipment repair.

For the working technician, training can be next to nothing. All power equipment dealerships are invited to product training and update seminars annually. Because the turf technician is not working at a dealership, he is not invited to these updates. Here is where the turf technician associations come in; there are six of them throughout the US. You can find out more by visiting [www.turftech.com](http://www.turftech.com), but, in essence, most of them offer training classes specifically geared to the turf technician. I recently attended a Turf Equipment Technicians Association meeting that covered reel grinding. Foley United presented the session and it was excellent. If a technician does not belong to a local technician association, he should join one immediately. If there is none in his area, he should start one. Any of the existing associations would be willing to help.

If we are going to overcome the shortage of turf technicians and power equipment technicians, it is time for the parade. We as an industry—technicians, executives, managers—have to get out there and beat the drum and toot our own horn. When the EETC first became organized in 1997, we felt that the major reason young people were not interested in our industry was because of parents steering them in different directions and school counselors steering them toward more "lofty" careers. I now think that it is because young people don't know we even exist. So it's time to get out of the back room, get out of the back shop, and let the world know that we're out here. **ST**

*Jim Roche is executive director of the EETC, a non-profit association addressing the critical shortage of service technicians in the power equipment industry. He can be reached at 262-367-6700 or [rjr10@wi.rr.com](mailto:rjr10@wi.rr.com).*



## WORKMAN e2050

The Toro Workman e2050 utility vehicle offers exceptional performance and versatility for any situation. This electric vehicle has a powerful 500-amp drivetrain for hill climbing under all load conditions. In addition, the drivetrain results in longer runtime between each charge. Safety features include a plug detector that stops the unit from operating when plugged in for recharging, and a run away protection indicator applies the brake and sounds-off if the unit ever rolls down a hill without the operator depressing the accelerator.

The Toro Company/800-803-8676

For information, circle 084 or

see <http://www.oners.ims.ca/2914-084>



### UTILITY TRUCK

Land Pride's Treker is a two-seat vehicle with a dump box, available in a Narrow Track model, the NT series, and a Standard Track model, the ST series. Both feature 4-wheel independent suspension and are available in 2WD and 4WD. The NT series is narrow enough to fit in the back of most mid to full-size pick-ups.

Land Pride, Div. of Great Plains, Mfg., Inc.  
785-823-3276

For information, circle 088 or  
see <http://www.oners.ims.ca/2914-088>



### BOBCAT 2100 AND 2100S

The Bobcat 2100 and four-seat 2100S utility vehicles provide comfortable accommodations for the driver and passengers. A 13-hp gasoline engine provides up to 19 mph. Accessories include a heated cab, electric lift for the cargo bed, and a 1500-lb. rated remote-operated winch.

Bobcat Co./701-241-8700  
For information, circle 087 or  
see <http://www.oners.ims.ca/2914-087>



### GATOR UTILITY VEHICLES

John Deere extends its utility vehicle line with the introduction of the Gator High-Performance Series (HP). The HP Series includes five new models, the Gator HPX, HPX 4x4, HPX Diesel, HPX 4x4 Diesel and the Trail Gator HPX 4x4, all designed to flank the existing Gator lineup.

John Deere/800-537-8233  
For information, circle 086 or  
see <http://www.oners.ims.ca/2914-086>



### FIELD MAINTENANCE VEHICLE

Broyhill introduces the new Highlander SPORT turf maintenance vehicle, designed to provide multi-functional tasks for turf and athletic field maintenance. Highlander Sport's hydrostatic drive, 16-hp air-cooled engine, and zero-turning radius provide ultimate maneuverability and speeds up to 12 mph.

Standard features include a low-profile fiberglass body, ergonomic seat with engine switch, and exclusive wrap-around rear-hinged cargo box for operator accessibility while seated. Mid- and rear-hydraulic lifts accommodate a variety of attachments.

Broyhill/800-228-1003, x34  
For information, circle 085 or  
see <http://www.oners.ims.ca/2914-085>





## KUBOTA UTILITY VEHICLE

Kubota introduces their first-ever Utility Vehicle, the RTV900, available in four configurations with a wide variety of accessories. The unit hosts Kubota's exclusive three-range variable hydrostatic transmission (VHT) and hydraulic power steering. The transmission boasts a braking feature that never allows the RTV900 to enter a free-wheel status when traveling downhill. The three-range shifting provides low (0-10 mph), mid (0-18 mph) and high (0-25 mph) operational speeds adding diversity when climbing hills and hauling or towing a load.

Kubota Tractor Corp/888-458-2682

For information, circle 089 or

see <http://www.oners.ims.ca/2914-089>

**NEW  
PRODUCT!**

## AUTOMATIC 4 X 4 UV

Club Car officially entered the 4-wheel-drive market with the unveiling of the Carryall 294 4x4 utility vehicle, which uses the company's exclusive IntelliTrak system to deliver fully automatic, on-demand 4x4. The Carryall 294 continually senses driving conditions and automatically engages and disengages 4-wheel drive without requiring the driver to stop and shift gears or lock differentials. The vehicle is available with a 20-hp Honda gas or a 20-hp, Kubota diesel-powered engine.

Club Car/800-800-1227

For information, circle 090 or

see <http://www.oners.ims.ca/2914-090>



**sisis**  
DESIGNER & MANUFACTURER OF TURF MAINTENANCE MACHINERY SINCE 1932

www.sisis.com

For full details of the SISIS range and your local dealer please contact:  
SISIS INC., PO Box 537, Sandy Springs, SC29677  
Phone: (864) 843 5972 Fax: (864) 843 5974 Email: [idx@sisis.com](mailto:idx@sisis.com)

Circle 161 on card or [www.oners.ims.ca/2914-161](http://www.oners.ims.ca/2914-161)

Beacon Ballfields is now Beacon Athletics!

**We've changed  
our name,  
not our game!**

INTRODUCING...

**BEACON  
ATHLETICS**



Beacon Athletics offers training, conditioning and athletic field equipment to improve the performance of athletes and the fields they play on.

**Hundreds  
of NEW  
products!**

TRAINING & FIELD EQUIPMENT EXPERTS



**beaconathletics.com**

Visit us online or call anytime!



**[800] 747.5985**

Circle 162 on card or [www.oners.ims.ca/2914-162](http://www.oners.ims.ca/2914-162)





NEW  
PRODUCT!

### GROUNDHOGS

AerWay has introduced all new 12- and 15-ft. widths as part of its Groundhog product line. "These are machines for contractors and large municipalities where time is critical" says Steve Russell, General Manager. "The larger sizes can aerate up to 10 acres per hour which significantly reduces the average application cost."

The units fold vertically for transport and include ballast tanks, pillow block bearings, and the choice of any of the AerWay family of tines including shattertine, sportstine, finetine, or coring tine. They can be fitted with optional smoothing rollers.

AerWay/800-457-8310  
For information, circle 091 or  
see <http://www.oners.ims.ca/2914-091>

### SPRAYTEK

The Cushman Spraytek is a dedicated sprayer built on the Cushman Turf-Truckster chassis. With a choice of a Suzuki 660 or 970 engine and an optional sprayer tank capacity of 175 or 300 gal., the Spraytek can be customized to fit your needs. Units have 4-speed manual transmission and 6.5-gal. tank and a centrifugal pump made of stainless steel, a pump capacity of 80 gpm and a variety of spray boom choices.

Jacobsen/888-922-8873  
For information, circle 092 or  
see <http://www.oners.ims.ca/2914-092>



*Online continuing education for  
busy sports turf professionals.*

# LANDSExpo

Design, Selection, Implementation and Maintenance

Conference and Tradeshow

**March 23, 2005 in Las Vegas**

Satisfying CEU requirements just got easier!

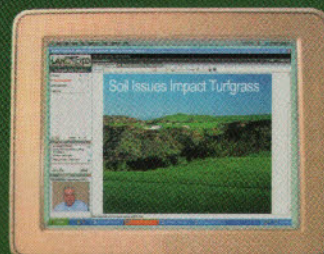
**Online Registration Opens November 2004**

National credits applied for: CCA and DPR Hours, GCSAA PDUs.

**[www.landsexpo.com](http://www.landsexpo.com) • 877-964-6222**

**Now there  
is a choice!**

The latest  
internet  
technology  
provides even  
dial-up online  
attendees  
virtually  
all on-site  
features!







**NEW  
PRODUCT!**

## LAND PRIDE MOWERS

Land Pride's new Razor Pro Series of riding mowers incorporates the convenience of 44- or 52-in. deck sizes with commercial features like a twin cylinder gasoline powered engine, 11-gauge deck reinforced with 11 gauge doubler plate and heavy duty push arms on the mower deck. An individual hydraulic motor powers each rear drive wheel for commercial like traction and maneuverability.

Land Pride, Div. of Great Plains, Mfg./785-823-3276

For information, circle 094 or  
see <http://www.oners.ims.ca/2914-094>



**NEW  
PRODUCT!**

## TOW-BEHIND TOPDRESSERS

Turfco introduces new options to its WideSpin 1530 tow-behind topdresser. The machine can topdress as light as a fertilizer spreader up to 30 ft. wide. This light, uniform and clean application means no dragging is required. The WideSpin 1530 can switch from light to heavy topdressing applications without attachments.

Turfco Manufacturing/763-785-1000

For information, circle 093 or  
see <http://www.oners.ims.ca/2914-093>



**NEW  
PRODUCT!**

## 2005 KAWASAKI MULE 3000

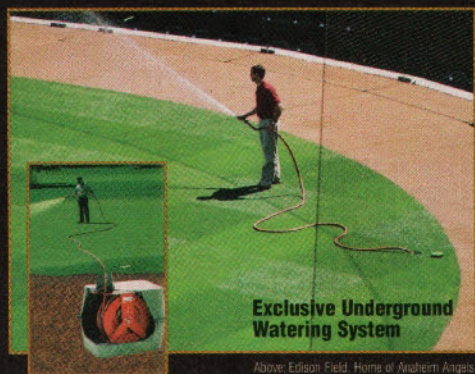
The full-sized Kawasaki MULE 3000 off-road utility vehicle is larger, has a more powerful engine, and more hauling and towing capacity than the compact MULE 550 model.

With features that include a tilting cargo bed, bench seat, fully automatic transmission and locking differential, it is Kawasaki's "industrial grade" utility vehicle.

Kawasaki/949-770-0400

For information, circle 095 or  
see <http://www.oners.ims.ca/2914-095>

# Work Smarter THINK REELCRAFT



**Exclusive Underground Watering System**

Above: Edison Field, Home of Anaheim Angels



**Portable Hose Reel & Cart**



**Visit us  
in booth  
#714!**

**SportsTurf**  
MANUFACTURING ASSOCIATION  
Member of the National Turfgrass Irrigation Society

**Trailer & Reel  
Hose Caddy**

**Contact the hose  
reel experts for  
water when and  
where you need it!**



**800-444-3134**  
Product Info Ext. 7335  
[www.reelcraft.com](http://www.reelcraft.com)

**REELCRAFT**

*Wind Things Up With Reelcraft*

Circle 163 on card or [www.oners.ims.ca/2914-163](http://www.oners.ims.ca/2914-163)

**AerWay®**

*AerWay® gives you the versatility to meet  
your changing needs.*

## Seasons Change... So Should Your Aeration Treatments



**Aerate All Year Long!**  
Aeration needs change with the seasons — from early establishment and growth, to maintenance midseason, and then to topdressing and overseeding as circumstances permit.

### Design Your Own Aerator!

Only AerWay® lets you choose a frame size and style to suit your power unit, and add any of our quick-change tined rollers (Shattertine®, Sportstine®, Finetine®, Coring Tine®) that suit the seasonal requirement.



**Coring Tine®**



**Shattertine®**



**Sportstine®**



**Finetine®**

for further information call **1-800-457-8310**

*Advanced Aeration Systems*

[www.aerway.com](http://www.aerway.com) email: [aerway@aerway.com](mailto:aerway@aerway.com)

Circle 164 on card or [www.oners.ims.ca/2914-164](http://www.oners.ims.ca/2914-164)