

Sports field irrigation

BY JAMES R. WATSON, PHD.

Whether duffer or pro, Little Leaguer or collegiate champion, every athlete wants to play on perfect green grass that is soft and resilient, yet firm enough for good footing. These same athletes also want a field that is tough, wear-resistant and weed-free. Water management is a key component of good field design and maintenance.

Even the heartiest turfgrass can't maintain its growth and resiliency without supplemental watering.

Some fields require more precise watering than others. Fields that sustain intensive play or that support football, soccer and baseball need sand-based soils to ensure good playing surfaces while avoiding soil compaction. But sand-based fields don't hold water or nutrients well and must be watered more frequently with smaller amounts of water. These fields also require smaller amounts of fertilizers applied more often. Fertilizers or nutrients may also be applied through an appropriately designed irrigation system.

Water may be applied to turfgrass in several ways to keep it green and resilient throughout the growing season. Hand watering is an effective way to treat stress areas, but is most useful when used in conjunction with an installed irrigation system.

Another external watering option is the use of sprinklers that pull themselves on a hose or wire-traveling sprinklers. They are largely limited to very small areas of established turf as this method washes away grass seedlings during the grow-in phase. In addition, they require labor to move the equipment to various field areas and must be watched to ensure that they move freely, avoid obstacles and are not subject to vandals.

In cases where soil is heavy or compacted, an automatic system is capable of running multiple cycles to ensure water infiltration into the soils and percolation through the seedbed. Quick-cycling capability also is effective for newly seeded or sodded fields and when turf needs to be syringed to affect evapora-



Photo by Paul Curtis

tive cooling during times of extreme heat and stress. Every field should be equipped with quick coupling valves around the field to allow hand watering or syringing of turf and to provide emergency water.

Water management also includes conservation strategies. Only an automatic irrigation system provides fingertip controls that alter irrigation cycling, which will conserve water and apply it efficiently and uniformly. The system also may include a rain switch to shut off automatic sprinkling during rainfall.

Another consideration when choosing an irrigation method is response time by support personnel. Missed watering cycles because of equipment failure can be a deathblow to athletic turf. When selecting irrigation equipment, it's important to choose a reputable supplier that offers local field support to customers. (See page 16.)

Warm turf headed for ACC

In January 2003, Advanced Aeration Systems (formerly Soil Air Technology) installed a Turf Warming system for Lane Stadium's Worsham Field, home to Virginia Tech football. The system heats and aerates the Bermudagrass field, which is a warm season grass in Blacksburg's cool season climate. Blowers force air (either heated or ambient) through the drainage system beneath the field, which was constructed in 2001 using GreenTech ITM modules, and then up through the turf. The system was designed to keep the Bermudagrass active through mid-November, to prevent winterkill during cold winter months, and to provide an early green-up in the spring.

The turf warming system can automatically control both the temperature and soil gas composition of the field using Advanced Aeration's patented Subsurface Soil Conditioning technology. Temperature and soil gas sensors embedded within the root zone of the field provide continuous feedback to the system controls. If the field temperature or soil gases are not within their programmed ranges, then the system turns on automatically. When the field reaches the desired temperature or soil gas levels, then the system turns off. Independent research has consistently shown that turfgrass quality decreases when soil gases are outside optimal ranges.

The heaters modulate automatically to maintain a constant heated air tem-



perature to the field, regardless of ambient air temperature. In addition, the system can modulate both the air temperature and flow rate to provide for a constant root zone temperature, even as air temperatures and field moisture levels change.

The system controller is linked via wireless technology to grounds manager Casey Underwood's computer. From his computer, Casey can operate the system and automatically collect system performance and field data, of which the software program can then generate graphs for a visual assessment of the data.

Casey says "This system gives us an excellent tool in the management of Tifsport in our climate. We are able to extend our growing season by a month in the spring and a month in the fall and it gives us protection from winter injury. It

also allows us to exchange root zone gases without aerification and assist Mother Nature in the drying of the field. I have been pleased with the system. It provides greater management flexibility and security."

Virginia Tech also owns a portable electric Advanced Aeration blower, which it purchased in 2001, for suctioning water and air through the field. The portable blower and turf warming system work in concert to regulate field temperature, moisture and soil gases.

Contact Advanced Aeration Systems at 561.625.3301 or via e-mail at gdaltan@advancedaerationsystems.com.

Budget Basics

Football Fields: Focus funds on the end zones and the area between the hash marks. An automatic irrigation system could be installed for the end zone and center areas where turf needs are greatest. An effective drainage system for the entire field remains important.

Soccer Fields: Again, the goal area and center of the field are most crucial to play and the hardest to maintain. An automatic irrigation system in these areas maintains a viable field. Soccer fields should be as flat as possible, thus a subsurface drainage system is of great value and worth the investment for a dedicated soccer field.

Baseball Fields: Although the turf is in the outfield, the focus on water management for baseball is on the infield. Proper drainage and an automatic irrigation system are essential to managing the skinned areas. The infield requires adequate water to avoid compaction that may lead to injuries. It is important to have clean, sharp edges at the soil/grass interface.

ST

James R. Watson, Ph.D., is vice president and agronomist for The Toro Company and consults with sports field managers around the world.

More drainage solutions

Last month, AirField Systems provided 84,000-square foot drainage system for an international soccer event held at Reliant Stadium, home of the Houston Texans. The AirField drainage system, covered with thick cut Bermuda sod, was down for one week, constructed in 2 1/2 days, and then rolled out and removed for future use.

"We can take this system and use it again and again," says Randy Price, sales director of Turfgrass America.

For sports teams, the state of the art drainage system is a blessing.

"We had soccer, softball and baseball tournaments all on the same days in February, all essentially side by side, and

soccer, because of its drainage system on the field, was played while the other two were cancelled by weather," Texas A & M Director of Athletics Bill Byrne said of his women's soccer field, recently renovated with the AirField system.

The main difference between the old and new playing fields is not what's on the surface, but what's under it, A & M officials said. Using the AirField design, the sand-based field complete with a highly efficient drainage system is capable of handling over 3 inches of rain per hour.

For more information, contact Airfield Systems at www.airfieldsystems.com or 888-287-9657.



BATTERY-POWERED VALVE SYSTEM

Hunter Industries has released a new battery-powered wireless valve system for sites that do not have access to electrical power. The WVC does not require electrical connections, and is available as sealed 2-station or 4-station units. Each WVC (with antenna) can be installed to irrigation valves in minutes without special tools.

The WVC is fully submersible and waterproof up to 12 ft., ensuring reliability in a muddy valve box environment. Vandalism is also minimized with a below-ground installation.

Hunter Industries/760-744-5240
For information, circle 057 or
see www.oners.ims.ca/2082-057

Problems with drainage?

Increase Safety, Playability,
and Wear Tolerance of Turf
with...

QwikDRAIN[™] SYSTEMS



- Increase aeration and drainage with a narrow slot "trench-n-fill" system at 20" o.c.
- Minimal surface disruption
- Fast, clean, cost effective operation

For a Certified Contractor Nearest You, Call Toll Free

1-866-567-6872

Division of GreenONE[™] Industries

Revolutionizing Golf & Sports Turf Drainage

Circle 158 on card or www.oners.ims.ca/2082-158



Herndon Stadium - Atlanta Beat
Women's Professional Soccer Stadium
Atlanta, Georgia



Call for information and samples of our full line of sports field products, including Rapid Dry[®] drying agent, Soilmaster[®] soil conditioner and other field supplies.

Dan Wright

- General Contracting
- Sports Field Construction and Renovation
- Construction Management for Design/Build

800 273-8608

1487 Blackdirt Road • Whitesburg, Georgia 30185
www.sportsturf.net

SPORTSTURF[™]

C O M P A N Y I N C

Let us build your Field of Dreams...

Circle 159 on card or www.oners.ims.ca/2082-159

In & On the Ground

FERTIGATION FOR TURF

A totally enclosed and lockable fertigation unit designed for 3-30 acre applications that require a secured system to automatically feed the property is available. Fertigation offers quick recovery of turf damaged by play and other conditions by injecting liquid fertilizers through your irrigation system, which can reduce other costs.

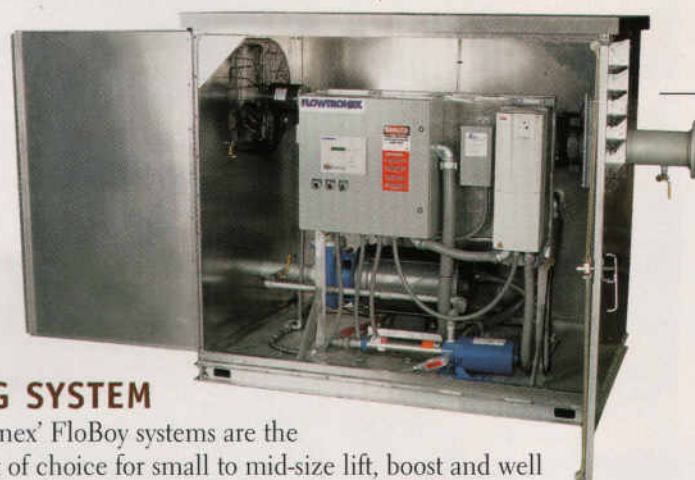
Turf Feeding Systems, Inc./800-728-4504
For information, circle 063 or
see www.oners.ims.ca/2082-063



PUMPING SYSTEM

Flowtronex' FloBoy systems are the equipment of choice for small to mid-size lift, boost and well pump applications. Every FloBoy comes in a prefabricated, skid-mounted package with all-weather marine-grade aluminum enclosures and superior control logic, making them the best long-life pumping solution available.

Flowtronex/800-786-7480
For information, circle 066 or
see www.oners.ims.ca/2082-066



MULTI-FLOW DRAINAGE

Varicore Technologies produces a 6-in. version of the Multi-Flow drainage system. Six-inch Multi-Flow exposes more surface area to surrounding soils than a 4-in. round pipe. This makes it very efficient at collecting water. Because of its unobstructed, enclosed flow channels, it yields better flow rates.

Varicore Technologies/800-978-8007
For information, circle 064 or
see www.oners.ims.ca/2082-064



NEW FILTER

Miller-Leaman, Inc. is announcing the release of their new innovative Turbo-Disc Filters. As water enters the housing, a high velocity spinning action occurs, spiraling heavier particles (particulate, sediment, etc.) away from the disc cartridge, down to the base of the filter pod.

Miller-Leaman/800-881-0320
For information, circle 059 or
see www.oners.ims.ca/2082-059



The most important games in the world depend on **one supplier** for sports field solutions.

We built a reputation as *the* reliable manufacturer of premium quality field paints and custom stencils, as well as tennis and sport surfaces. Today we supply most everything you need to support all your athletic facilities.



PLAY HARD



We can take it.

For all your painting and equipment needs, **World Class** is the only name you need to know.

• Premium Field Paints

Bulk and Aerosol
Turf Colorants
Graco and Trusco Strippers

• Graphic and Logo Stencils

Field Numbers
Hash Markers
Sports Field Layout Systems

• Field Covers and Windscreens

• Tennis Court Coatings, Nets and Accessories

• Sports Field Accessories

WORLD CLASS
athleticsurfaces

1-800-748-9649 or info@wrldclass.com

SOIL AMENDMENT

Caltrisal soil amendment overcomes salinity issues in soils by solubilizing calcium in the soil and moving desiccating salts away from the rootzone quickly and efficiently. Caltrisal can be sprayed or injected, and can be applied in conjunction with liquid fertilizers, making application a snap.

Aquatrols/856-751-0309

For information, circle 096 or see www.oners.ims.ca/2082-096



GLOBAL IRRIGATION SYSTEM

Sentinel offers field satellites that operate in stand-alone mode with flow monitoring and sensor capability as standard features. You can use a hand-held radio and satellite in stand-alone mode, without additional hardware. Exclusive to Toro, the hand-held can be used for voice and data commands. Or, you can upgrade to a central system without adding a middle manager or additional field controller hardware.

Toro Irrigation/800-664-4740

For information, circle 131 or see www.oners.ims.ca/2082-131

SPEEDIER INSTALL TIMES

The new SnapTap saddles from King speed install times for swing joints, drains, and sprinkler heads by eliminating need for glue and tools. SnapTap allows the saddles to cut efficiently through polyethylene pipe with a patented "cutting tip" for a tight seal every time. The installer will see side location of the latch and hear it "snap" into place to visibly and audibly confirm the connection is secure.

King Innovation/800-633-0232

For information, circle 103 or see www.oners.ims.ca/2082-103



FIRE ANT BAIT

Amdro Pro fire ant bait is the fastest, most effective professional product for the control of imported and native fire ants, and a variety of other ants. Mound treatments or broadcast applications of Amdro Pro eliminate the queen and her colony in 3-7 days.

BASF/919-547-2000

For information, circle 072 or see www.oners.ims.ca/2082-072



Because *their* definition of "playable" will never be the same as yours.

Most sport facilities are often faced with very short periods of time between sport seasons to get their fields "playable".

Typar® Turf Blankets will enhance germination and root growth, allowing for earlier usage and greater survival through seasons.

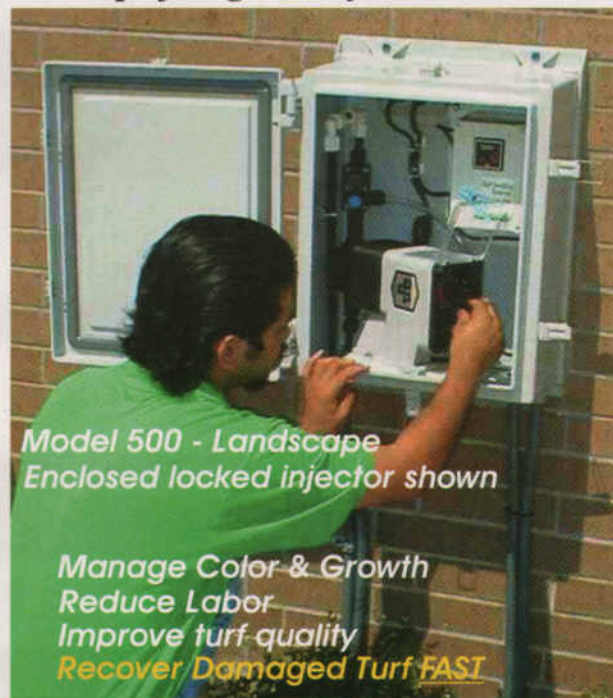
Call 800-455-3392

TYPAR®
TURF BLANKETS

Circle 162 on card or www.oners.ims.ca/2082-162

Fertigation

Turf Feeding Systems is the leader in golf and landscape fertigation systems - Worldwide



Model 500 - Landscape
Enclosed locked injector shown

Manage Color & Growth
Reduce Labor
Improve turf quality
Recover Damaged Turf FAST

Six Models - Ten Capacities- 3-50 acres

Call Today (800) 728-4504

Turf Feeding Systems, Inc.

WWW.TURFFEEDING.COM



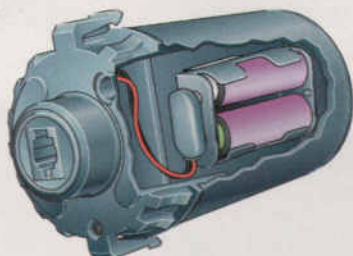
Circle 193 on card or www.oners.ims.ca/2082-193

LONG BATTERY LIFE KIT

Using the dependable technology of the SoloRain 8014 valve actuator, Nelson Turf introduces the 8096 PG Long Battery Life Kit for the SoloRain PG multi-station actuator line.

Compatible with any SoloRain PG unit, this kit extends the normal battery life up to 5 years.

Nelson Turf/800-622-8024
For information, circle 075 or
see www.oners.ims.ca/2082-075



FIX DRAINAGE PROBLEMS

Using the non-invasive WaterWick sand injection technique, TRW Enterprises can tailor a specific solution to your drainage problems. The three-blade vibratory system injects a custom-blended sand-based vein from 5/8- to 1-in. wide and up to 12 in. deep. Play can resume immediately after the process is complete.

TRW Enterprises/800-877-7103
For information, circle 058



NEW ROTOR

K-Rain has introduced the ProSportRotor, capable of covering a 43-67-ft. area.

The unit, available in heavy-duty plastic or stainless steel, is packed with features: partial to a full 360 degree coverage; a triple port nozzle; patented Easy Arc Set allowing for easy adjustment from the top with a flat blade screwdriver; Arc Memory Clutch returns the rotor to its preset position automatically even after being tampered with; patented Reversing Mechanism has more than a 20 year history of uninterrupted reverse and return; and more.

K-Rain/561-775-9607
For information, circle 068 or
see www.oners.ims.ca/2082-068



Is your turf as tough as your team?






GN-1™

Patented

Hybrid Bermuda

a product of Greg Norman Turf Company.

GN-1 patented hybrid bermuda is the ideal choice for your athletic field, golf course or residential play yard needs.

-  Exceptional dark green color
-  Excellent wear recovery
-  Good cold tolerance
-  Tolerant of high salinity soils
-  Lower maintenance costs



Pacific Sod
The Professional's Choice



800 942-5296

www.PacificSod.com