

Newly Affiliated MiSTMA Holds Meeting

The Michigan Sports Turf Managers Association (MiSTMA) held its first meeting as an official STMA affiliated chapter June 25, at West Ottawa public Schools.

Sixty-eight attendees packed the room for the kick-off of the educational sessions. Meanwhile, several vendor attendees were on the field, wrapping up setup of displays for the trade show and outdoor demonstrations.

Chapter President Rick Jurries welcomed attendees, outlined coming events, and invited guests to take advantage of their final opportunity to sign up as charter members. He turned the program over to Chapter Secretary Kurt Brace, who served as MC for the day.

David Gilstrap of Michigan State University gave the first presentation. He addressed the topic: "Species Cultivar — Selection, Overseeding and Timing for Irrigated, High-Maintenance Sites." He spoke about working with Kentucky bluegrasses and perennial ryegrasses in athletic field seeding and overseeding situations.

Gilstrap noted that most sports turf managers begin the seeding process with 80-percent Kentucky bluegrasses (of at least three cultivars) and 20-percent perennial ryegrasses by weight. Because it takes 23 Kentucky bluegrass seeds to equal the weight of one perennial ryegrass seed, that translates to 95.7-percent Kentucky bluegrass and 4.3-percent perennial ryegrass by seed count. Essentially, the faster-germinating perennial ryegrasses create a light shade that aids bluegrass establishment.

Dr. Paul Rieke of MSU spoke next on the topic: "Timing is Everything."

His presentation included a list of prerequisites for quality sports turf: appropriate choice of grass, acceptable soil conditions, adapted maintenance programs, adequate budgets and equipment choices, reasonable scheduling of the field, and training of the field manager.

STMA Executive Director Steve Trusty welcomed the chapter, and spoke on the national organization and



Courtesy: Trusty & Assoc.

benefits of membership. He presented President Jurries with the official MiSTMA Chapter gavel.

Doug Coe, who retired after 30 years as a coach and was inducted into the Coaches Hall of Fame, took the floor with his topic: "Relationships with Pride." He pointed out the similarities between coaching and sports turf management. Both are in the public eye, both are evaluated every game, and both have no place to hide. People in the stands think that both coaching and sports turf management are simple — and they are if everything goes right. We all know that doesn't happen

often. As Coe said, "You can't always do it right, but you must always attempt to do it right."

Networking was in high gear during lunch and afternoon activities. Attendees moved outside for the trade show and outdoor demonstrations. Attendees were divided into groups for up-close viewing of techniques and question and answer exchanges. As they wrapped up the day checking out the exhibits, it was obvious that this first meeting as an official chapter had been a great success.

WELCOME TO STMA'S TWO NEWEST AFFILIATED CHAPTERS: The Michigan Sports Turf Managers Association (MiSTMA) and the Great Lakes Sports Turf Managers Association (GLSTMA) have both completed all requirements for affiliation. They were officially recognized as affiliated chapters by the STMA Board at the June 19-20, 1998, Board Meeting.

Chapter news

Great Lakes Chapter: GLSTMA closed charter membership enrollment at the end of its July 10 workshop, the first meeting as an official affiliated chapter. As with all chapters, new members are always welcome and can sign up anytime.

GLSTMA is now accepting entries from active members for the '98 Sports Facility Awards. Categories include Professional Facility; College Facility; and School, Municipal, or Park Facility. All entries must be submitted by September 1.

The annual dinner and awards banquet will be held at 6:30 pm, November 5, at Baldwin-Wallace College. Executive board meetings are

scheduled for August 25, September 29, and October 27.

For information on these events, the awards program, or the Great Lakes Chapter, contact Joe Zelinko: (800) 897-9714, or Boyd Montgomery: (419) 885-1982.

Colorado Chapter: The Colorado Sports Turf Managers Association will hold its fall seminar September 17, at Westminster City Park, Westminster, CO. For more information on this

event, the Colorado Chapter, or upcoming activities, call the 24-hour chapter hotline/fax: (303) 438-9645.

MAFMO Chapter: The Mid-Atlantic Field Managers Organization is planning a "Fall Field Day" October 1, at the Baltimore Stadiums. For information on this event, the MAFMO Chapter, or upcoming activities, contact the chapter hotline: (410) 290-5652.

Iowa Chapter: ISTMA will

participate in Iowa Turf Institute's benefit golf tournament September 14, at Glen Oaks Country Club in West Des Moines. For information on this event, the Iowa Chapter, or upcoming activities, contact Lori Westrum at The Turf Office: (515) 232-8222, or fax: (515) 232-8228.

Mid-South Chapter: A Tour of Pringle Stadium in Jackson, TN, is being planned for early September. Those within the Mid-South Chapter area with ideas for a regional meeting are asked to contact Chip or Jim at the numbers listed.

For more information on the chapter, any of the regions, or pending activities, contact Chip Houmes: (901) 377-5081, or Jim Calhoun: (901) 755-1305.

Michigan Chapter: MiSTMA has elected the following officers for 1998:

- Rick Jurries
West Ottawa Public Schools
President
- Chuck Amos
Western Michigan University
President-Elect
- Kurt Brace
J. Mollema & Son, Inc.
Secretary
- Heather Nabozny
West Michigan Whitecaps
Treasurer
- Matt Heiss
Turf Services
Commercial Vice President

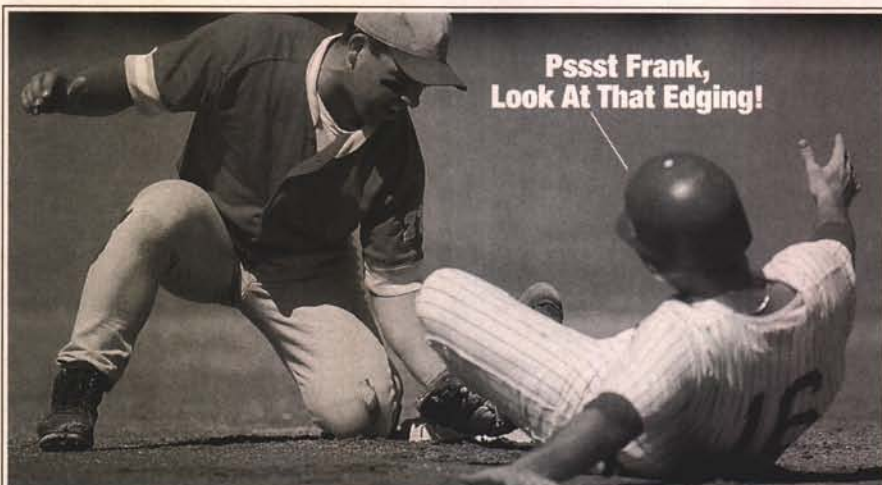
MiSTMA is planning an August event with presentations on football field compaction. For information on this event, the chapter, or pending activities, contact Rick Jurries, West Ottawa Public Schools: (616) 395-2364.

Minnesota Chapter: The Minnesota Chapter is planning a September workshop. Details will be announced soon. For information on the September event, the Minnesota Chapter, or pending activities, contact Connie Rudolph: (612) 646-1679.

KAFMO Chapter: The Keystone Athletic Field Managers Organization is planning a "Fall Field Day." It's been tentatively set for October 6, at Lehigh University.

For information on this event, the KAFMO Chapter, or upcoming activities, contact Dan Douglas, Reading Phillies Baseball Club: (610) 375-8469 ext. 212.

Midwest Chapter: For information on the Midwest Chapter or pending activities, call the chapter hotline: (847) 622-3517.



Great Fields Get Noticed.

TurfcO offers you a strong team of turf building equipment. They're the fastest and most versatile equipment to let you build harder and healthier turf. Your sports fields become safer to play on and easier to maintain. Originators of Mete-R-Matic® top dressers in 1961, TurfcO's professional equipment gives your field a look that gets noticed.

Pro Turf Edger

Special design makes it easy to follow any edge. Eliminates spade work around the diamond. Oscillating blade action cuts fast and clean. Leaves no mess or no thrown debris to clean up.

Economy Aerator

Now you can afford to breathe life into any sports field. This low cost, 62" aerator has no hydraulics or mechanical linkages for easy use and low maintenance. Hooks up to any vehicle in seconds.

Precision Top Dresser

Fast, uniform, versatile. Patented chevron belt lets you handle top dressing, lime, crumb rubber, gypsum, calcine clay, compost and even overseeding with precision. Level fields and amend soil consistently.



For details and the name of your local dealer, call

1-800-679-8201

TurfcO Manufacturing Inc.
1655 101st Avenue Northeast
Minneapolis, MN 55449-4420

*Choice Performers,
Choice Fields.*

TURFCO

Call 1(800) 817-1889 use **FastFax #1170898** and/or Circle 117 on Postage Free Card

Florida Chapter #1: The chapter will participate in the Florida Turfgrass Association Show in Tampa September 16-19. Stop by the STMA booth for updates on the chapter and on the national STMA.

A field construction and renovation seminar is planned for October 20, at Palm Beach Gardens. For information on these events, the Florida Chapter, or pending activities, contact John Mascaro: (954) 938-7477.

Northern California Chapter: For general information about the Nor-Cal STMA, contact Sal Genito, UC Davis: (530) 752-1691.

Southern California Chapter: The chapter is planning its annual community service project for early August at Mount San Antonio College in Walnut, LA County. For information on the service project, the Southern California Chapter, or pending activities, contact the chapter hotline: (888) 578-STMA (toll free in Southern California).

Chapters on the grow

Great Plains Chapter: Plans are moving forward on a fall workshop and for a workshop with Floyd Perry of

Grounds Maintenance Services. For information on these events, the Great Plains Sports Turf Managers Association, or upcoming activities, contact Mark Schimming, City of Wichita: (316) 337-9123.

Arizona Chapter: For information on the Sports Turf Managers Association of Arizona or upcoming events, contact Bill Murphy, City of Scottsdale Parks and Recreation Department: (602) 994-7954, or Kris Kircher, City of Chandler Parks & Recreation Department: (602) 786-2728.

Indiana Chapter: Plans are moving forward on the formation of a new chapter in Indiana. For information on this developing chapter, contact Terry Updike, B & B Fertilizer: (219) 356-8424, or Pat Hickner: (800) 672-4273.

Nevada Chapter: For information on the forming Nevada Chapter or upcoming events, contact Ibsen Dow: (702) 649-1551, or Alan Paulson, Clark County School District: (702) 799-8724.

Wisconsin Chapter: For information on the newly forming Wisconsin Chapter, contact Rich Riggs, R. H. Rettler & Associates, Inc.: (715) 341-2633. □

New Turf Problem Solvers

- ◆ Reduced turf clippings
- ◆ Aggressive tillering & fill in
- ◆ Improved mowing quality
- ◆ Very dark green color
- ◆ Better versus brown patch
- ◆ Durable under traffic
- ◆ Establishes new performance standards

WIZARD
Turf Type Perennial Ryegrass

EXCEL
TURF TYPE PERENNIAL RYEGRASS

PENNANT II
TURF TYPE PERENNIAL RYEGRASS

CELEBRATION
DWARF PERENNIAL RYEGRASS BLEND

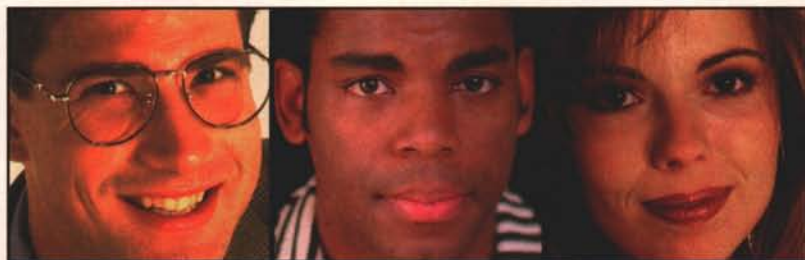
Burlingham Seeds
"Seeds for the 21st Century"

E. F. Burlingham & Sons
P.O. Box 217
Forest Grove, Oregon 97116
800-221-7333 503-357-2141
Fax 503-359-9223
Quality Seed since 1914

Product Information

for every

Tom, Dick, and Harriet.



In every issue of our magazine, you can choose from more than 100 brochures covering the latest products, services, and company information.

Looking for the information is easy. Visit the Reader Service area on greenindustry, and place your order today!

<http://www.greenindustry.com>
The fast way to get what you need.