

ROOKIES

Turf Roller



The Stadium Roller 7000, by Wood Bay Enterprises of Las Vegas, NV, features a three-roller configuration comprised of one non-slip drive roller and two steering rollers. With a 5.5-hp Honda engine and a Snow-Nebstead power transmission, the roller utilizes a hand throttle for increased safety and ease. The roller travels at approximately seven miles per hour.

WOOD BAY ENTERPRISES

Circle 121 on Postage Free Card

Riding Aerator



Terracare's 1997 Riding Aerator allows the operator to aerate one acre per hour with ease. The 98-tine aerator is 22 inches wide and produces a 3 1/2 inch by 4 1/4 inch pattern. Equipped with an eight-hp electric start Briggs & Stratton engine, it features hydrostatic drive with an electric screw jack for lifting the tines in and out of the ground.

TERRACARE

Circle 122 on Postage Free Card

Field Striper

The Jaydee Model 3700 Sprayliner features a structural steel-welded frame which provides strength and rigidity for its four ten-inch pneumatic ball-bearing wheels. A large top opening on the stainless steel paint tank makes it easier to fill and clean. Two quick-connect couplers are fitted so that the sprayshield and the hand spray attachment can be coupled at the same time. Its ten-gallon air tank is fitted with a safety valve, a pressure gauge and a regulator to provide constant pressure to the paint tank. A 125-psi air charge will empty the paint tank about two times. This means that about 12 gallons of mixed paint material (usually enough to mark two soccer fields or one football field) can be applied with one air tank.

JAYDEE EQUIPMENT CO.

Circle 123 on Postage Free Card

Air-Cooled Mower

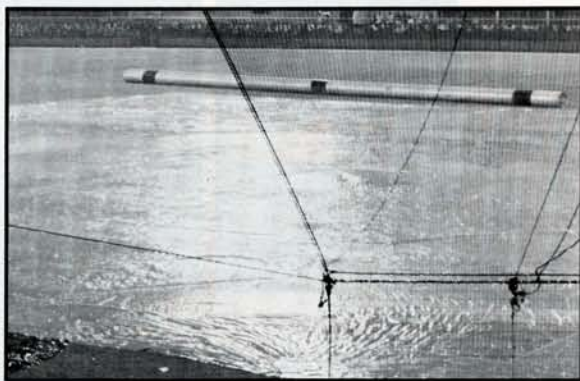


Grasshopper's new model 725K zero-radius outfront mower, with its 25-hp Kohler Command V-Twin OHV engine, is the company's largest air-cooled unit.

The 725K is compatible with all Grasshopper decks, including the Combo Mulching™ Deck, which is available in five sizes from 44 inches to 72 inches. Its "one-deck-does-it-all" feature lets the operator bag, discharge or mulch using the same deck.

A wide variety of attachments include: multipurpose dozer blades for work in dirt, sand, gravel or snow; rotary brooms for sweeping away dirt, debris or up to eight inches of snow; heavy-duty snowthrowers with 180-degree rotation discharge spout; a dethatcher; and AERA-vators in both a 60-inch and a 40-

RainBuster



- *Black/White reversibles for the **ULTIMATE A-L-L SEASON** turf protection!
- *Lightweight AND Economical!
- *Sizes from Golf Greens to Soccer Fields.

Compliments our complete line of vinyl covers, patented zipper systems, geotextiles, grids and more! Call for your **FREE BUYER'S GUIDE** now.

1-800-621-0146 TOLL FREE

M. PUTTERMAN & COMPANY, INC.
4834 South Oakley • Chicago, Illinois 60609
312-927-4120 (In Illinois)

ROOKIES

inch model which loosen and aerate even hard, dry soils.

THE GRASSHOPPER COMPANY

Circle 124 on Postage Free Card

Maintenance-Free Drainage Systems

Sand Channel Greens provides state-of-the-art intensive sand channel drainage installations, professional consulting and problem solving on sports fields, multi-use areas, golf courses and lawns.

The company has designed and built equipment that provides "next day play" with minimal disruption to turf. The sand channels they create provide a highly permeable passageway to remove surplus water from the surface and allow irrigation water to penetrate deeper and faster, encouraging a deep root structure.

Sand Channel Greens offers comprehensive soil analysis and consulting services as well as installations and provides incentives to municipal clients to create youth development programs

such as golf and soccer camps. The company will donate a portion of fees to be applied directly to programs which promote health outlets for our nation's youth.

SAND CHANNEL GREENS

Circle 125 on Postage Free Card

Zero Radius Riding Mower



The new Ransomes Bob-Cat ZT 200 Series riding rotary mower features true zero turning radius and a design that improves serviceability.

The ZT 222 is powered by a 22-hp Kohler Command air-cooled gas engine. Two steering levers control independent power to each wheel, which enhances maneuverability around trees, shrubs and small turf areas. Each wheel is powered by a Sunstrand/Hydrogear pump and Ross wheel motors.

The hydrostatic transmission has a minimum number of fittings for ease of service and long unit life. Other features that improve serviceability include: the cutter deck and belt drive can be reached through a hinged foot plate; the tilt forward seat provides access to the linkages, hydraulic reservoir and battery; and no tools are required to remove the side belt for service access.

RANSOMES AMERICA CORPORATION

Circle 126 on Postage Free Card



This card can stop a bullet.

It's only a piece of paper, but that little card up there carries a lot of weight. Keeping millions of kids off drugs, out of gangs and in school. To learn how you can help the Boys & Girls Clubs, call: **1-800-854-Club.**

The Positive Place For Kids



Supplier BookMarks On The Web



GREEN-NET

<http://www.aip.com/Green/Horticulture.html>



<http://www.husqvarna.com>



SPORTS TURF MANAGERS ASSOCIATION
<http://www.aip.com/STMA>



LOFTS SEED CO.
<http://www.turf.com>



PROFESSIONAL LAWN CARE ASSOCIATION OF AMERICA
<http://www.plcaa.org>



<http://www.power-prune.com>



GMC TRUCK DIVISION
<http://www.gmc.com>



JOHN DEERE CO.
<http://www.deere.com>

THE TORO CO.
<http://www.toro.com>



K-RAIN MFG. CORP.
<http://www.k-rain.com>



THE GRASSHOPPER COMPANY
<http://www.grasshoppermower.com>

Tanaka
<http://www.aip.com/Tanaka>



WEST AG IRRIGATION PRODUCTS
<http://www.westag.com>



AMPAC SEED CO.
<http://www.ampacseed.com>



WEATHERMATIC
<http://www.weathermatic.com>