

ROOKIES

PRODUCT UPDATE

PART-CIRCLE SPRINKLERS



Sports turf managers with quick coupler irrigation systems can select from a new line of part-circle impact sprinklers and valves from Walla Walla Sprinkler Co., a newly created subsidiary of Nelson Irrigation Corp.

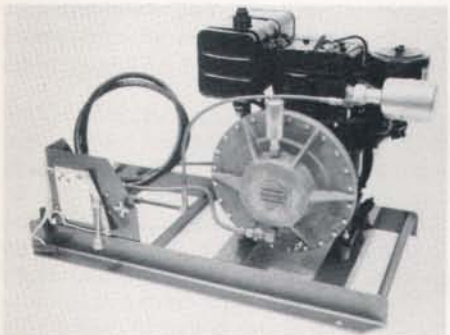
The sprinkler line includes 1/2-, 3/4- and one-inch models. All models are constructed of heavy-duty brass and stainless steel with heavy-duty bearings. Easy-to-set stops and a new design trip mechanism provide part-circle arcs.

The quick-coupling valves range in size from 3/4-inch to 1 1/2 inch. A locking valve lid with key is optional. The company also offers swivel hose ells from 3/4-inch to one inch.

WALLA WALLA SPRINKLER CO.

Circle 133 on Postage Free Card

THERMO-FOGGER



Capable of laying down a ten-foot-wide blanket of insecticide fog, the Thermo Fogger Model F-3901 high-output fogger is designed for controlling insect pests in large areas.

The unit utilizes a two-stage fogging system which preheats and pumps insecticide into a chamber mixing it with hot exhaust. The fog is spread at a rate of 175,000 cubic feet per minute.

38 sportsTURF

Power is supplied by a ten hp, four-cycle Briggs & Stratton engine with a factory setting of 3000 rpm. Fuel capacity is one-and-a-half gallons with a running time of more than one hour.

The formulation output is ten to 25 gallons per hour, or dry fog at 16 gallons per hour. The unit weighs 147 pounds and is 35 inches long and 20 inches wide. The fog particle size is controllable from 0.5 to over 50 microns.

THERMO-FOGGER CO.

Circle 131 on Postage Free Card

QUARTER TON HAULER



The convenience of a quarter-ton hauler is available to the sports turf industry in either assembled or easy-to-build kits from CHI Industries. There is a choice of three- or four-wheel models.

The haulers feature a sturdy, tubular steel frame, large flotation tires, automatic clutch with belt-drive torque converter for variable speed, forward and reverse transmission and tilting dump bed. Both ten- and 16-hp engines are available with electric start and hand-operated throttle. The three-wheel hauler has handlebar steering, while the four-wheel model has a steering wheel.

Accessories include a steel cab, off-road tires, lights and front wheel brakes. Assembled units are available from dealers or partly assembled kits can be purchased directly from the factory.

CHI INDUSTRIES, INC.

Circle 132 on Postage Free Card

FERTILIZER INJECTOR

The PRO-jector is an automatic proportioning fertilizer injector developed by TFS Systems for use with conventional drip irrigation systems.

The injector allows users to decide how much fertilizer or other liquid additives will



be distributed throughout the irrigation system, in the exact proportions they choose. Because the fertilizer is injected in consistent, pre-determined amounts, the problem of uneven distribution is greatly reduced.

The injector features a dual tank design. Existing water pressure forces air into the larger tank to be compressed. This compressed air forces fertilizer in the smaller tank to be injected into the irrigation system. The unit is simple to install, easy to use and requires no outside power source to operate.

TFS SYSTEMS

Circle 130 on Postage Free Card

SLICER SEEDER

The SS-35-20S all-terrain slicer seeder from SALSCO, Inc., is controlled by a single lever, which activates the cutters, lowers them, sets the cutter depth, and turns the seed applicator on.

At a speed of two mph, it covers 18,000 square feet hourly, using a large-capacity hopper (with sight gauge). It can turn to plant seeds in a 25-inch radius, planting rows on two-inch centers.

Depth is infinitely adjustable down to two-and-a-half inches. The seeder can travel up inclines of up to 40 degrees, powered by a ten-hp Briggs & Stratton engine. Eleven-gauge blades are standard, while 14-gauge blades are optional. The tires are 11 X 400 X 5 Pneumatic Turf Savers.

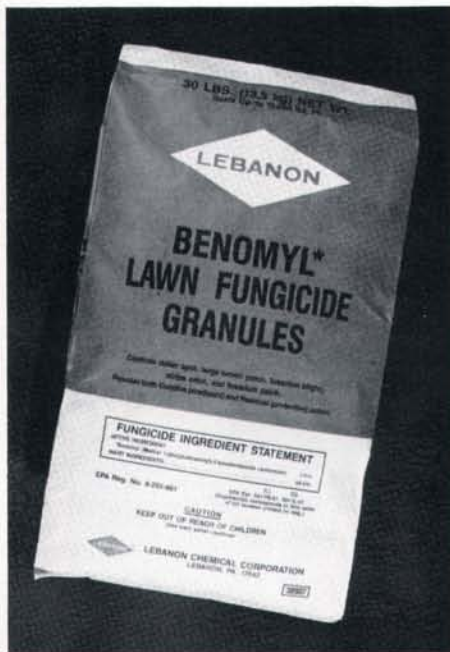
SALSCO, INC.

Circle 129 on Postage Free Card

ROOKIES

PRODUCT UPDATE

LAWN FUNGICIDE



Lebanon Total Turf Care has introduced a new granular fungicide product for use by the professional turf market—Lebanon Benomyl Lawn Fungicide Granules. This fungicide cures, as well as stops, certain diseases all season long.

The fungicide contains 1.6 percent Benomyl for effective treatment of professionally maintained turf areas. The product provides both curative (eradicator) and residual (protective) action for better control of many turf diseases. When used as directed, the granules control dollar spot, large brown patch, fusarium patch, fusarium blight and striped smut.

The product, on a cob base to allow for easy spreading, is available in 30 pound bags that provide up to 15,000 square feet of coverage.

LEBANON TOTAL TURF CARE

Circle 128 on Postage Free Card

LEAF CRACKER

Chopped leaves can deteriorate more easily with the John Deere Leaf Cracker, a bolt-on mulching attachment.

The cracker holds leaves longer in the mower deck cutting chamber in order to pulverize them for soil mulch. When the leaves deteriorate, they create a moisture-retaining soil mulch without creating a thatch problem. Some thatch—about a half-inch layer—helps soil hold moisture, which is especially important during a drought.

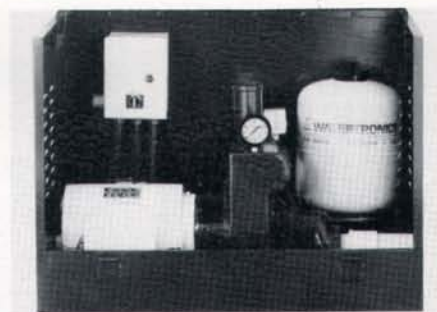
42 sportsTURF

The mulching attachment takes about 45 minutes to install on 60- and 72-inch side discharge mower decks for John Deere 400 Series tractors and compact utility tractors for homeowner or commercial use, and on front mowers in commercial operations. It should be removed for regular lawn mowing.

JOHN DEERE

Circle 126 on Postage Free Card

PUMP STATION



A new line of compact booster and suction lift pump stations suited for landscape and sports turf applications is now being offered by Watertronics.

The efficient, low-profile pump stations are self-contained in tough, lockable weather-resistant steel enclosures. They feature motor sizes up to 50 hp, with pump capacities of 1000 gpm (on booster models) and 600 gpm (on suction lift/wet sump models).

WATERTRONICS

Circle 127 on Postage Free Card

ADJUSTABLE RIDING AERATOR



OMC Lincoln now offers a riding aerator that allows the operator to vary the core

spacing while aerating. The Ryan GA 30 features variable core spacing with the touch of a hand lever.

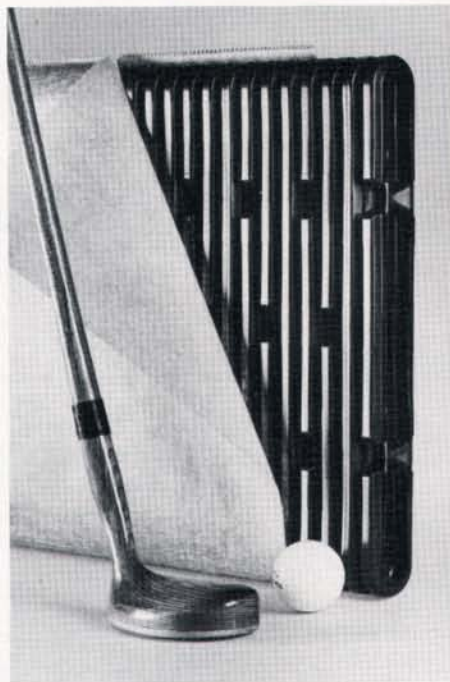
In addition, the throttle, choke and ignition switch are hand-operated, while vehicle speed, brakes and lift control for the aerating head are controlled by foot pedals.

The GA 30 also has hydrostatic drive, allowing the operator to maneuver smoothly and easily without shifting gears. For example, when aerating greens, the operator can lift the tines and turn around at transport speed and be back on the green aerating in much less time than with other aerators.

OMC LINCOLN

Circle 125 on Postage Free Card

NARROW DRAINAGE PIPE



AdvanEDGE pipe from Advanced Drainage Systems, Inc., has been added to their traditional drainage product line. This vertical panel design is suited for golf course drainage since it only requires a four-inch wide trench and can be installed more quickly than a system requiring gravel.

Made from high density polyethylene, the pipe provides dimensional stability and unrestricted flow. Available in coils up to 3000 feet with a complete selection of fittings, this new product will reduce turf damage and keep golfers in play. A geotextile wrap can be used in sensitive soils.

ADVANCED DRAINAGE SYSTEMS, INC.

Circle 124 on Postage Free Card

ROOKIES

PRODUCT UPDATE

TRIPLEX GREENSMOWER



The Bunton Company has discovered a way to make its triplex greensmower "light on its feet" without sacrificing heavy-duty construction. The mower reduces the pressure transferred to the turf surface while providing durable components that improve cutting performance.

Large hydraulic reel motors and counterweights sit solidly on the playing surface to eliminate bounce and produce a consistent cut. A unique traction wheel design provides more tire surface area to keep ground surface pressure low.

A true hydrostatic transmission coupled with dynamic braking are gentle to greens. Powered by a choice of 18 hp Onan or 16.5 hp diesel Kubota engines, the mower allows independent reel operation and standard backlapping.

BUNTON COMPANY

Circle 200 on Postage Free Card

GRID SYSTEM

Tired of worn looking high traffic areas on your turf? The Grid System from Chempath, Inc. may be the solution.

The grass-protecting surface uses 2 x 2 1/2-foot interlocking grids held in place with eight inch nails. Comprised of ultraviolet-stabilized, color-fast high density polyethylene, the grids are tough, strong, yet pliable to conform to the undulations in the soil.

Turf grows through the 1 1/4-inch openings while the 1/2-inch wide by 1/4-inch thick plastic strips protect the crowns of the grass. Soil compaction is eliminated and the underside cones allow air and water to enter the soil, eliminating the need for aeration.

The system is effective in preserving the

beauty of lawn in fire lanes, heavy vehicle paths, golf cart paths, walkways, and almost any high traffic turf area.

CHEMPATH, INC.

Circle 137 on Postage Free Card

PAINT STRIPER



The Bantam heavy-duty paint striper, available from Direct Safety Company, combines ruggedness with light weight and easy handling.

Constructed of welded steel, it features a three hp, four-cycle engine, 10.2 CFM twin-cylinder compressor, and a 2 1/2 gallon paint tank equipped with disposable tank liners.

Four 10-inch pneumatic wheels, dual handles and perfect balance provide maximum maneuverability. The unit paints straight lines or curves with equal accuracy. An accessory handgun may be used to paint curbs, stencils, fences, etc.

The gasoline-powered compressor can also be used to inflate tires and run other air-powered equipment. The unit comes with a manufacturer's 18-month warranty.

DIRECT SAFETY COMPANY

Circle 136 on Postage Free Card

MOISTURE SENSOR

Plants can't talk, but now your turf can tell you when it needs water. The Aquamiser, from Conservation Technologies, is a micro-electronic moisture sensor that can detect when turf needs water and when it doesn't.

The unit is powered by a time clock controller, or a solenoid valve, or its own 24 volt power system. It employs a new moisture sensing capability that can be set and adjusted to measure narrow ranges in all soil types. When it senses the moisture is at or above a certain level (set by the user),

it will prevent irrigation systems from activating by interrupting the common. When soil moisture is low, the unit allows for scheduled irrigation.

Soil moisture is monitored through a pair of stainless steel probes placed in the root zone of lawns and landscapes. An electronic pulse is transmitted and as soil moisture changes, a corresponding change occurs in the pulse.

CONSERVATION TECHNOLOGIES

Circle 135 on Postage Free Card

HARROW RAKE



The unique four-foot Harrow Rake from Farnam Equipment Companies is designed specifically to clean up and renew choked-out lawns. Growth is stimulated by allowing better penetration of air, water and nitrogen.

This rugged rake can be used to level freshly tilled or plowed ground, and adapts to all working conditions and land contours. It can be used to pulverize, spread, and work in manure. It can also level and spread gravel in driveways and parking lots.

Built to last a lifetime, the Harrow Rake is engineered for rugged use. It requires no maintenance, grease or oil. Using high carbon-spring-steel teeth 7/16 inch in diameter by 3 1/2 inches long, a patented design concept prevents the teeth from spreading apart in the center.

An extra-heavy-duty tubular-steel drawbar and three-strand-hitch design allows the rake to take extra strain.

FARNAM COMPANIES, INC.

Circle 134 on Postage Free Card

ROOKIES

PRODUCT UPDATE

GOLF CART



Columbia ParCar Corporation has introduced its 1989 model P4 series with aerodynamic lines, unexposed corners and wrap around bumpers.

Made of Metton, the front body is virtually unbreakable. The rear body is made of preformed, high-impact fiberglass. A clamshell design allows both front and rear sections to be tilted for ease of maintenance.

The gasoline-powered cars come with a 250 cc two-cycle, oil-injected engine, bucket seats, a dashboard-mounted safety key switch that controls forward and reverse movement, and automotive-type dashboard. A tubular steel frame and speed-balanced rack and pinion steering complete the durable vehicle.

COLUMBIA PARCAR CORP.

Circle 138 on Postage Free Card

SCOREBOARD

CLASSIFIEDS

CLASSIFIED ADVERTISING RATES: \$40.00 per inch payable in advance. One inch minimum. There are about 50 words per inch. Send copy with check for \$40.00 at least four weeks prior to issue date to: Classifieds, sportsTURF magazine, P.O. Box 8420, Van Nuys, CA 91409. Blind box numbers are available. Special borders and rules will be billed at display advertising rates. Classified ads are not commissionable.

POSITION WANTED

Intelligent, highly-motivated turfgrass manager looking for a career position in the sports turf industry. Have B.S. degree plus 5 years management experience in the care of golf, lawn and athletic turf. Willing to relocate to many areas in the U.S. Write sportsTURF, Dept. C-1, P.O. Box 8420, Van Nuys, CA 91409.

POSITION WANTED

Experienced golf course superintendent seeks position in turf management. Seven years golf course experience on bent and Tifdwarf bermudagrass. Contact: Richard Harvey, P.O. Box 150, Seymour, TX, 76380, (817) 888-5258.

GOLF COURSE MECHANIC

New resort/housing development with golf course is seeking a qualified golf course mechanic. Full-time, twelve-month position. Knowledge of reel grinding preferred, but not mandatory. If you would like a change of pace and improved quality of life, please apply for this position located in the beautiful Big Sky Country! Send resumes to Eagle Bend Golf Club, Attention: Jon Heselwood, 820 Holt Drive, Bigfork, MT 59911.

TURF CONSULTANT

Certified professional agronomist. Have soil probe, will travel. 25 years of experience from Massachusetts to California. Douglas T. Hawes, Ph.D., 2408 Roundrock Trail, Plano, TX 75075. (214) 867-0176.

SPORTSFIELD DESIGN, RENOVATION, CONSTRUCTION

Whatever your sport, whatever the level of play, and wherever the location, Sportsfield, Inc., can provide all the services required to meet your needs. Our team of experienced personnel can design, renovate or construct your playing fields. Do it right the first time! Call or write for our brochure, PO Box 615, Blue Island, IL 60406, (312) 371-0917.

Terra-Green®

REDUCE RAIN DELAYS!

WITH
THE REDDER, LESS DUSTY
SOIL CONDITIONER & DRYING AGENT
THAT RETAINS MOISTURE
IN HOT WEATHER
AVAILABLE NATIONWIDE
1-800-247-BEAM

ADVERTISER INDEX

Aquatrols Corporation of America	11
Baseball Diamond of the Year ...	27
Ben Meadows	22
Brouwer Turf Equipment Ltd ...	15
E.F. Burlingham & Sons	5
Fine Lawn Research Inc	43
Hinspergers Poly Industries	45
Huber Ranch Sod	31
Hunter Industries	6
Inject-O-Meter	31
International Seeds Inc	23-26
John Deere	2,3
Kidwell Turf Farms Inc	34A-B
Lasco Industries	13
Little Manufacturing	34
Lofts Seed Inc	48
National Research and Chemical	34
Newstripe Inc	22
Otterbine/Barebo	41
Parker Hannifin Corp	19
Parker Sweeper	7
Partac Peat Corp	46
Rain Bird Sales	21
Regal Chemical Co	32,33
Sierra Crop Protection Co	47
Turf Seed Inc	29



THE PROFESSIONAL'S CHOICE
... SINCE 1922

BEAM CLAY IS THE
BASEBALL MIX USED BY
PROFESSIONAL TEAMS ACROSS
THE U.S.A. AND CANADA.
SPECIAL MIXES FOR PITCHER'S
MOUNDS, HOMEPLATE AREAS
& WARNING TRACKS.

BOTH
AVAILABLE IN
BULK OR BAGS

CALL TOLL FREE:
1-800-247-BEAM

IN N.J.
201-637-4191

PARTAC PEAT
CORPORATION
KELSEY PARK
GREAT MEADOWS, N.J.
07838

PARTAC®

GOLF COURSE
TOP-DRESSING



AMERICA'S PREMIUM
TOP-DRESSING

HEAT TREATED

CONTROL THATCH,
PROMOTE HEALTHY TURF
& SMOOTH PLAYING SURFACES